

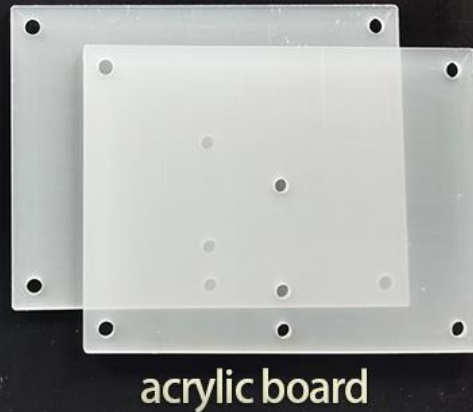
unpacking guide

This product includes:

mother board (box A) 、 power control unit (box B) 、
leds (12) 、 accessory bag (advertisement nail *4、 line
pipe*1、 pieces of adhesive tapes、 AA battery box*1、
connection line*1) 、 remote control
bonus --- double sided postcard *1、 acrylic board *2

The basic model doesn't include music effect;

The music function of the music model is integrated in the box B.



Some remote controls have a protective film that can be removed

There is insulation under the remote control, remove it before use



there is a protective film on Acrylic plate surface , remember to tear before use

Remote control Function description



lighting part (top half)

LIGHT ON/OFF: turn on/off the leds

SHOW TIME: auto play 12 modes(1-12)

SPECIAL: 8 special modes(all leds are steady on)

TURN: adjust the flow direction of lighting effects

1-12modes:

1 flash(random) 6 double running 11 bum steady

2 breath(randon) 7 stack (head)

3 wave 8 flow 2 12 bum steady

4 flow 9 flow3 (whoke body)

5 marquee 10 whole breath

BRIGHTNESS + : brightness adjustment

SPEED + : speed adjustment

MATCH: Long press can make the lamp group only

recognize the command of the current remote control

CANCEL MATCH: long press again can be cancel match

with the lamp group, so that the lamp group receives all

remote control instructions of this series

details of match and cancel match (Important)

If you have two sets of this products, use the matching function to make the current energized lamp group only receive the command of the current remote control.

For example, there are led sets A and B, remote control 1 and remote control 2.

Open A, long press the match of remote control 1, you will see A flashing, after which A only recognizes the command of remote control 1. Turn off the power box switch of A and turn on B. Since B is not match, both remote control 1 and remote control 2 can be identified by B.

Long press the matching key of remote control 2, the B flashes, and then theB only recognizes the command of remote control 2.

Can achieve that A and remote control 1, B and remote control 2 matching, and don't interface each other.

Note that long pressing the match key will match all the led sets which opened, so when matching, power off the other led set(s).

music part (bottom half)

Supported formats : MP3 WMA WAV

MUSIC ON/OFF : turn on /off the music

▶||: Play/Pause

◀◀▶▶: Last song/next song

MODE : Switch bluetooth mode /TF card mode

VOL-+ : volume adjustment

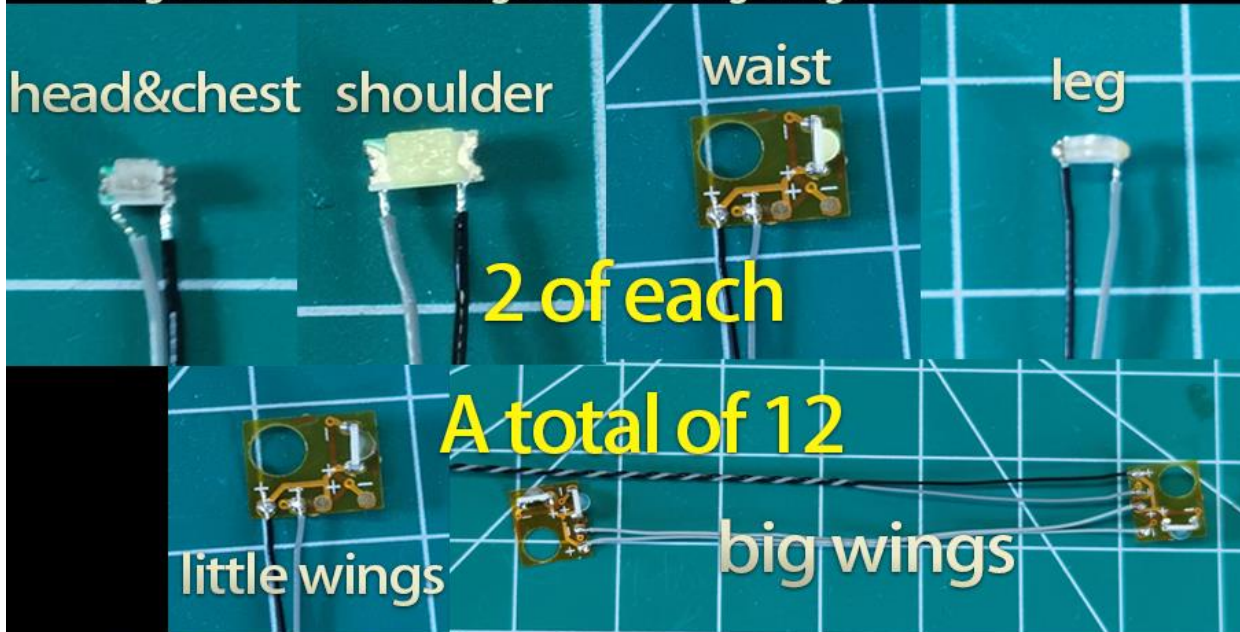
1-8 : One-click song selection in TF card mode
(the first 8 songs entered)

Tip: it is recommended to use high-quality audio sources to achieve better external playback effect.

lighting test

Please refer to wechat official account and B station video for instructions (Kosmos 科技)

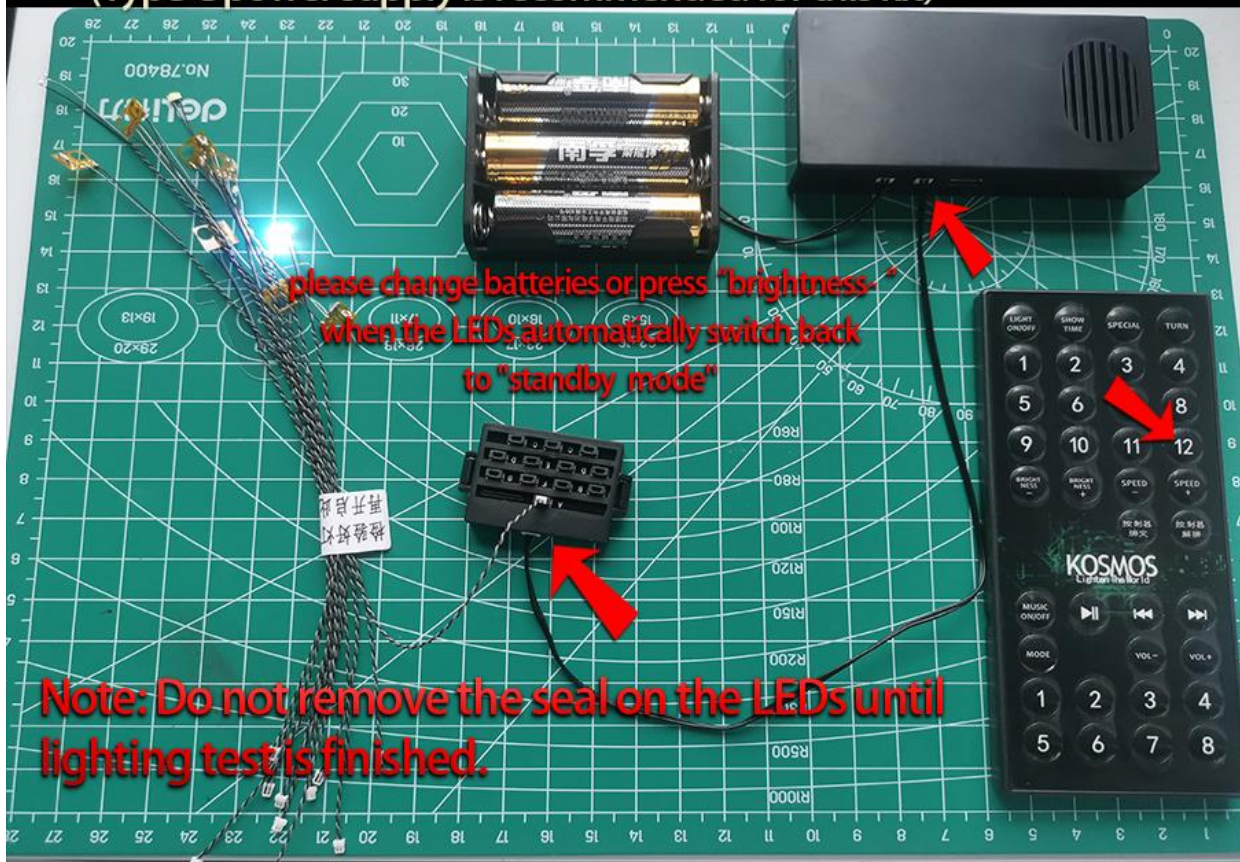
1 Check whether all parts of the LED units are correct:
head unit *1、chest unit *1、shoulder unit *2、waist unit *2、leg unit *2、Little wings unit *2、big wings unit *2



2 lighting test

Connect each component according to the picture below. Turn on the power. Use the remote control to turn on the lights, choose "12", check whether all sections are lighting up.

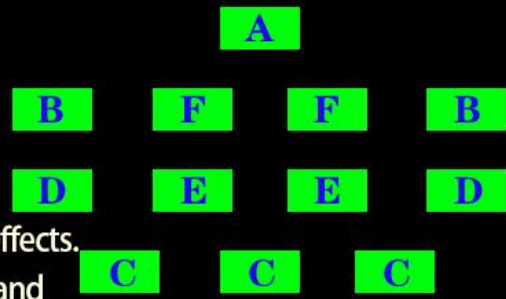
Power input: Type-C / AA battery (Type-C / AA Battery not included.)
(Type C power supply is recommended for this kit)



How to connect LEDs to mother board?

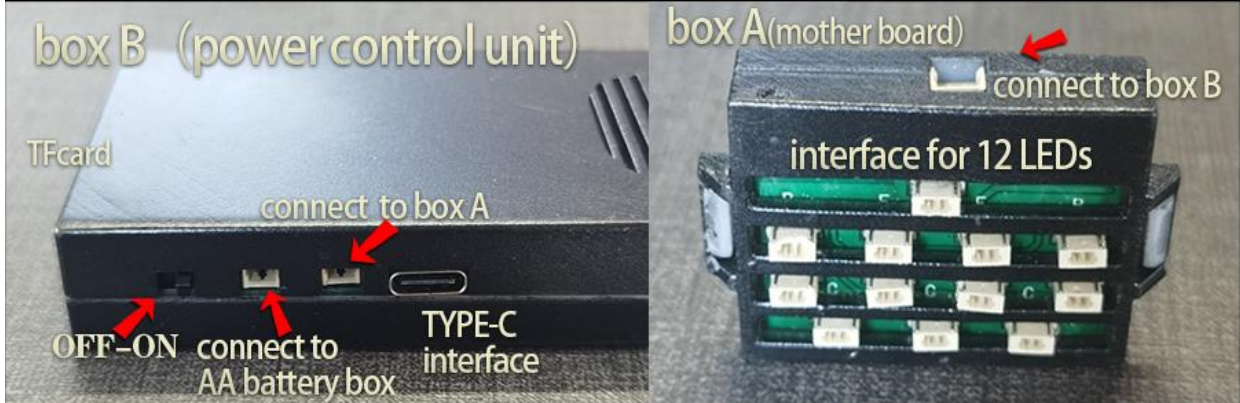
(recommendations are as follows:)

- A --- head
- B --- shoulder
- C --- chest & little wings
- D --- waist
- E --- leg
- F --- big wings

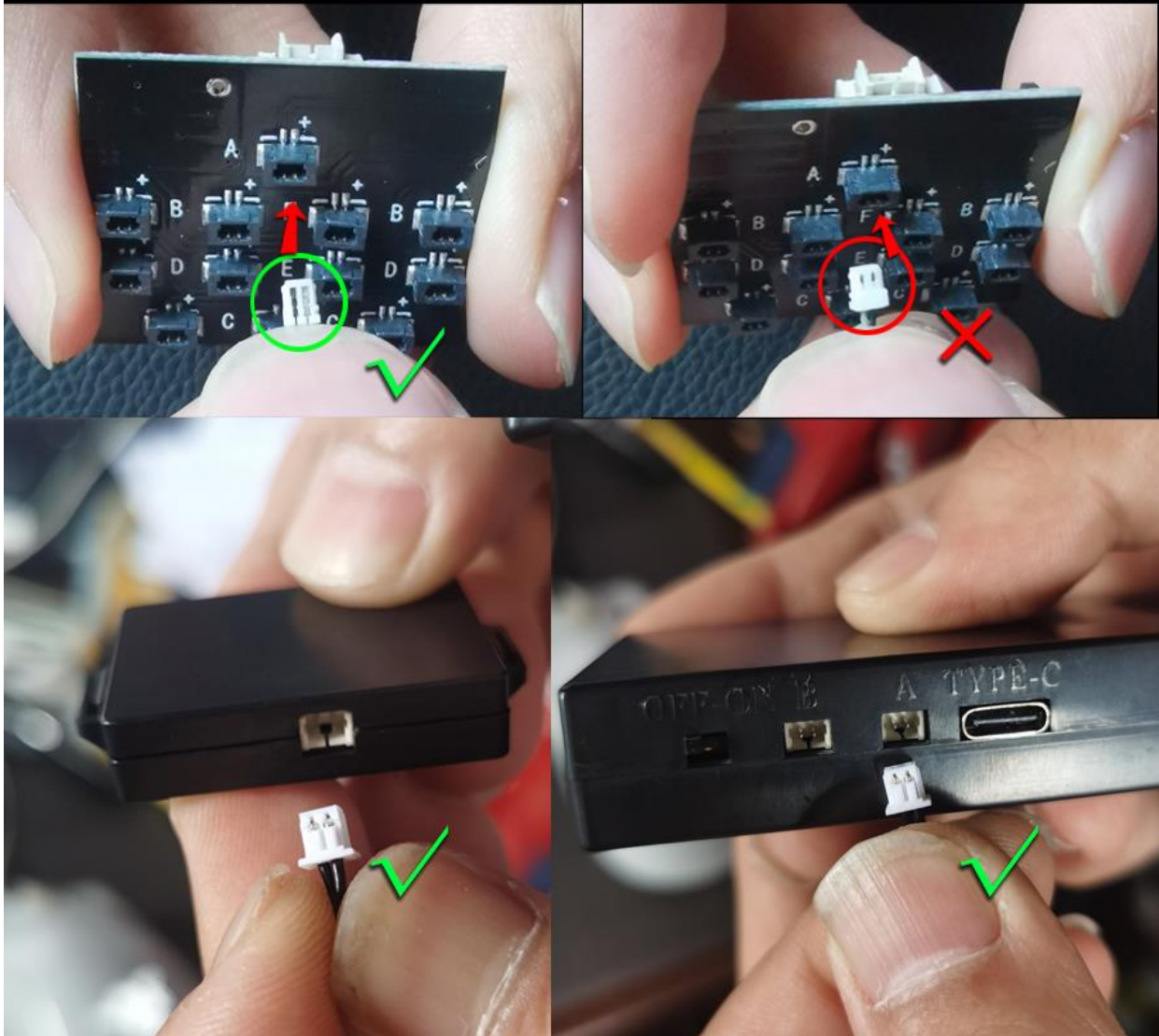


"A" is always stay lighting up among all lighting effects.

It is suggested that connect head led unit to "A", and how to connect other parts can be based on your preferences.



Distinguish the "male" and the "female" before plug in



Pay attention to the "male" and "female" of the plug, it may cause damage if you plug reversed

connection

各灯线连至A盒
connected all leds to box A

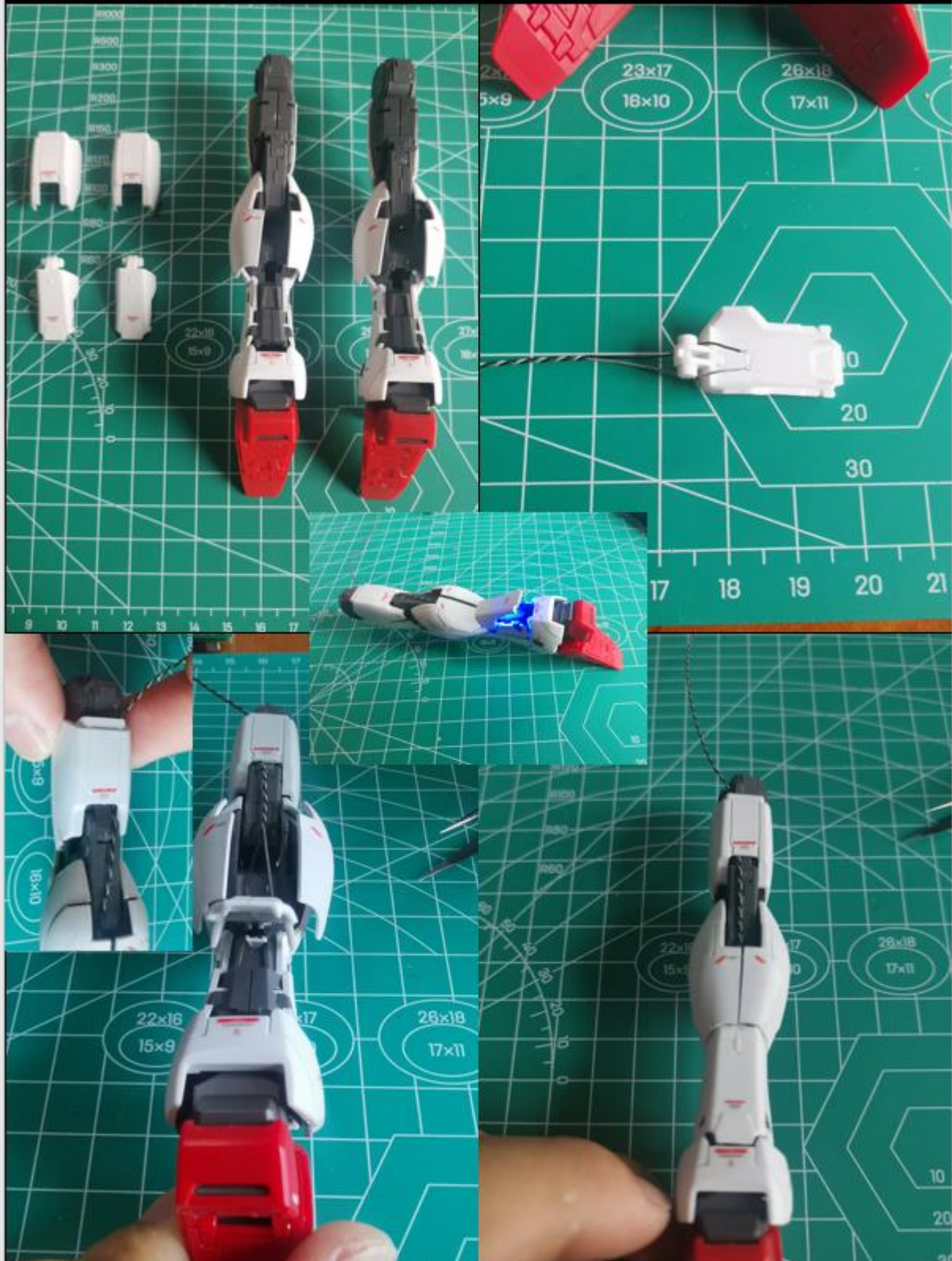
A盒与B盒相连
connected Box A to box B

电池盒/USB与B盒相连
connected AA battery box or usb to box B

Tip: you can unplug the connecting line which connect box A to box B when you posing and playing model.

No need to connect the battery box when using USB power supply.

Step 1, assemble leg units



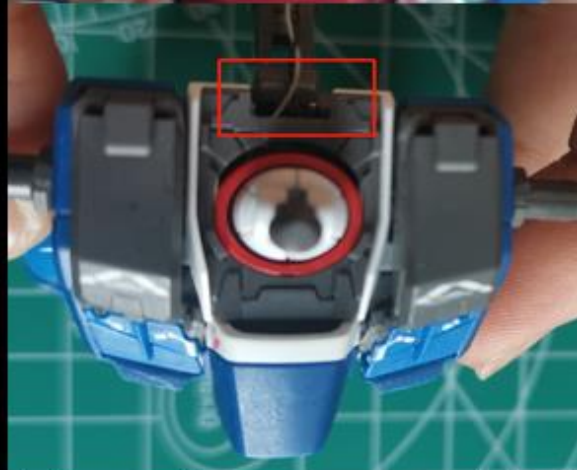
1. Remove the armor as shown in the figure
2. Hang the leg unit bead on the nozzle cover, paying attention to the position
3. Put the wire according to the picture, put the nozzle cover back, pay attention to the position of leds, and then put the armor back
4. when the nozzle cover can be attached tightly , it's just properly assembled
5. power on,and check the effect

step 2 ,assemble waist units



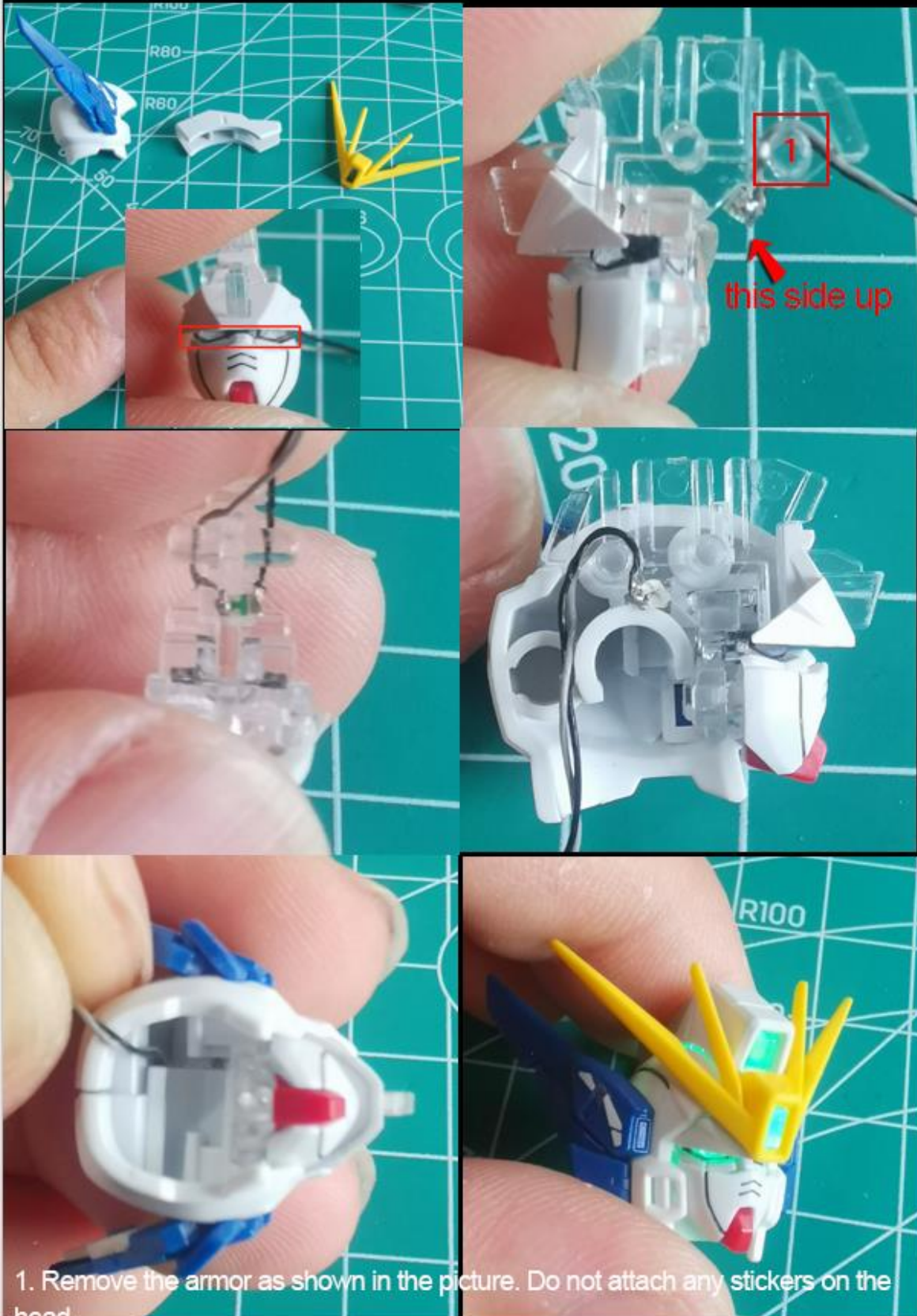
Stick the led units on the inside of the waist armor with stickers (cut to the required size), and put the wire above the part "1"

step 3, assemble chest units



1. Remove the armor as shown in the figure
2. Put wire through the back of the blue armor (Twist the wire in the opposite direction to release the length, otherwise it will not be long enough)
3. Attach the blue armor back
4. Line routing according to the picture position will not be pressed by white parts
5. Check whether the outlet position is correct
6. Power on, and check the effect

step 4, assemble head units



1. Remove the armor as shown in the picture. Do not attach any stickers on the head

2. put the wire around the part "1" on both sides

3. The back view

4. assemble the parts as shown in the picture, with the LED facing forward

5. Pay attention to whether the outlet position is correct and do not press the wire

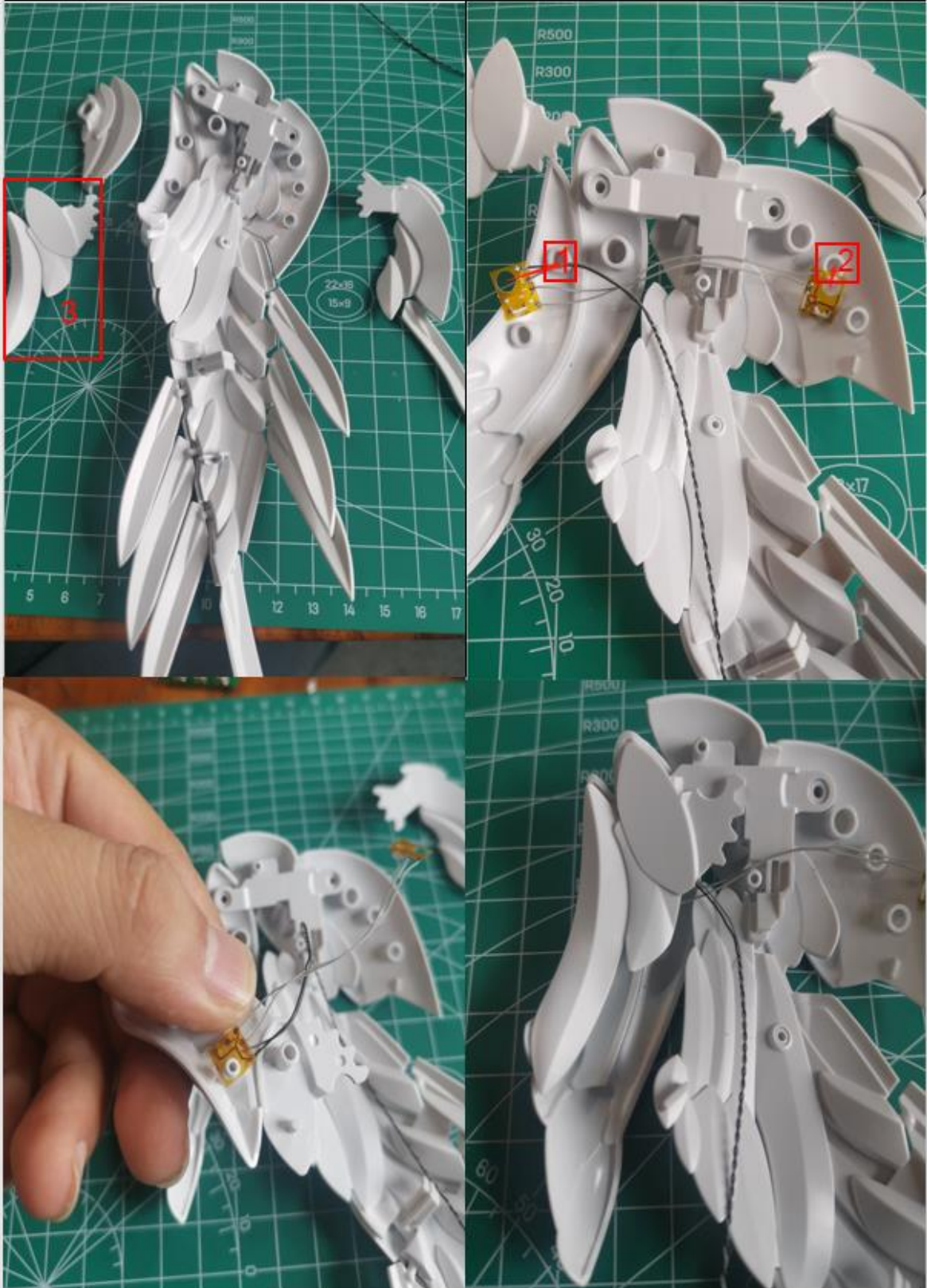
6. Power on ,and check effect

step 5, assemble shoulder units



1. Remove the armor as shown in the picture and put the wire around the part "1". Watch carefully and adjust the position of the LED.
2. Put the white part back
3. Put the blue armor back
4. Power on ,and check the effect

step 6, assemble big wing units



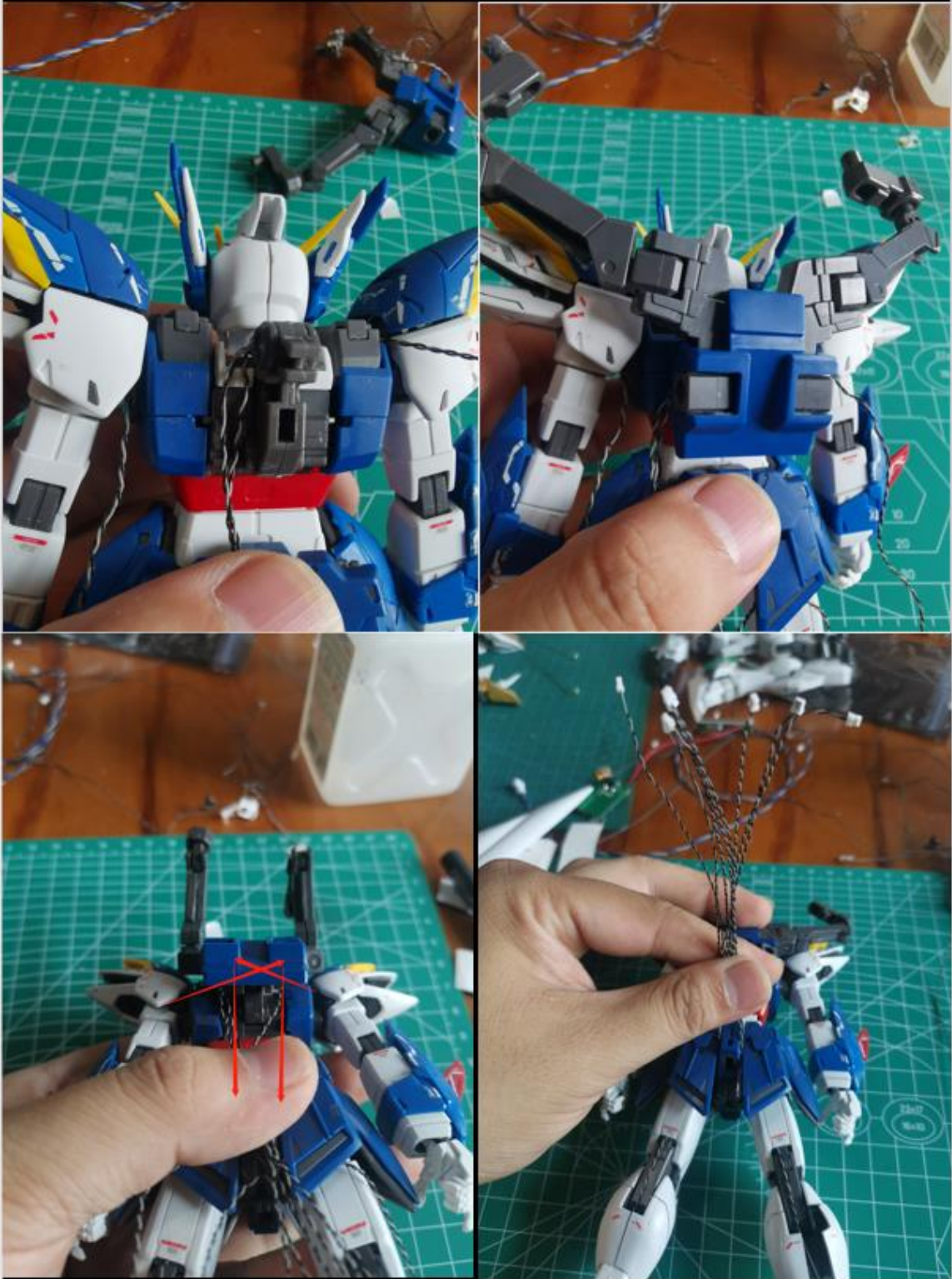
1. Remove the armor as shown in the figure
2. Assemble the LEDs to part "1" and part "2"
3. Assemble part "3" to the Wing, and pay attention to the position of the wire

step 7, assemble little wing units



1. Remove the armor as shown in the picture and take out the LEDs (no need to distinguish left and right)
2. Put the wire around part "1", and assemble the LED to the part "2", put the LED faced to the feather on the left
3. Power on, and check the effect
4. Assemble the other Wing in the same way

step 8, assembly



1. Assemble all parts of the body, place all wires downward as shown in the figure
2. Assemble the part of backpack
3. Cross the wires of shoulder units at the top of the backpack and place them downward
4. Concentrate all wires at the back of waist

step 8, assembly



1. Assembled each wing, and placed its' wires as shown in the picture
2. Connect each wires to box A according to their positions. (If you are not sure about the position of the wires, you can turn on the power and judge by the position of the light on)
3. Wrap all wires with a soft line pipe after fully connection as shown in the picture
4. Effect picture