



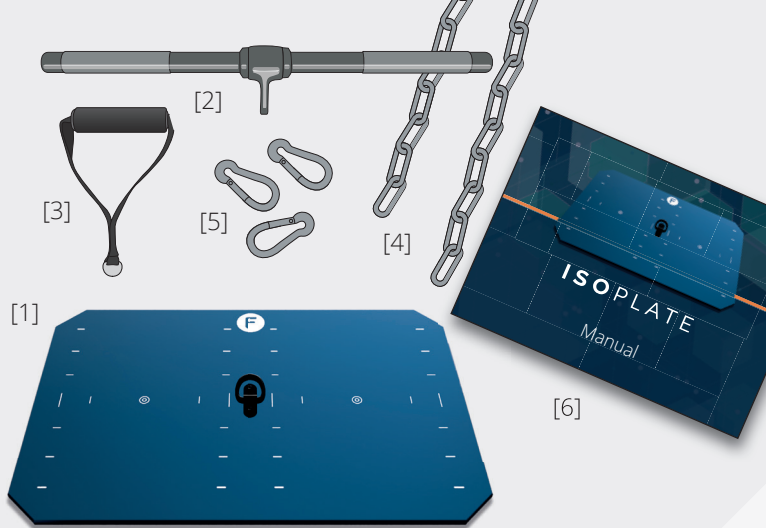
ISOPLATE

Manual

ISOPLATE

CONTENTS OF THE BOX

- [1] Plate
- [2] Metal bar
- [3] Hand attachment
- [4] Chains x 2 pcs
- [5] Carabiners x 3 pcs
- [6] Manual



Set up instructions

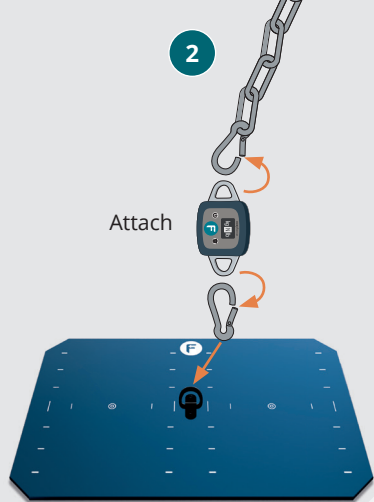


1



Place on flat surface

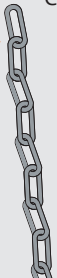
2



3



Connect

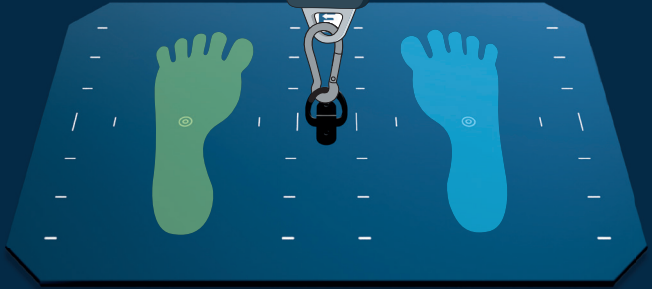


4

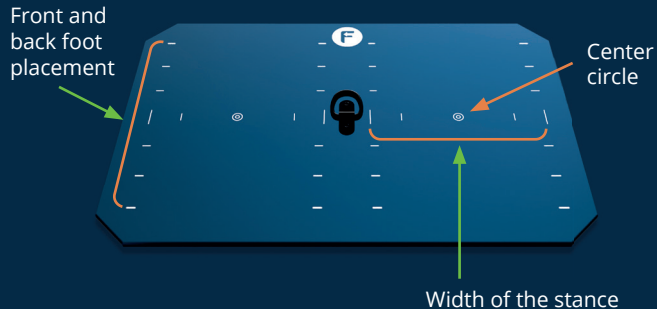
Adjust length



For starting the measurements follow the steps explained in the EasyForce Performance manual.



The top plate visuals



Specifications

Product Name	ISOplate
Dimensions	390 mm x 580 mm
Material	Anodised Aluminium 7075
Weight (actual)	6234 g
Top visuals	Laser engraving*

*Logo and guidelines are laser engraved to ensure its longevity and clear visuals.

Warranty information

Upon registering **EasyForce Performance** Dynamometer you will be provided with an extended warranty of one year on **ISOplate** accessory.



Register EasyForce Performance at
meloqdevices.com/register

Instructional videos and posters



Download or order an **instructional poster** and/or an **extended manual** for **ISOplate** here
meloqdevices.com/pages/easyforce-performance-dynamometer



EasyForce instructional videos on **YouTube**
youtube.com/c/Meloq

Follow us on social media!

Please, use the hashtags #measuremore #measureforsuccess

[instagram.com/meloq_devices/](https://www.instagram.com/meloq_devices/)

[facebook.com/MeloqDevices](https://www.facebook.com/MeloqDevices)

[linkedin.com/company/meloq-ab/](https://www.linkedin.com/company/meloq-ab/)



Manufactured by Meloq AB

• contact@meloq.se • meloqdevices.com

