

LANA GROSSA



© Lana Grossa GmbH

Design 5 – Filati Journal 65

SHIRT
ECOPUNO & SILKHAIR

SHIRT · ECOPUNO & SILKHAIR

Design 5 – Filati Journal 65



Size 36/38 (40/42, 44)

Instructions are given for first size. Figures in parenthesis refer to larger sizes. When only one figure is given, it applies to all sizes.

Materials: **250 (300, 350) g** of Lana Grossa **Ecopuno** (72% cotton, 17% Merino wool, 11% baby alpaca; 215 m/50 g) in Mint Turquoise (**col 44**) and **125 (150, 175) g** of Lana Grossa **Silkhair** (70% superkid mohair, 30% silk; 210 m/25 g) in Mint (**col 175**). Size 3.5 and 4 mm needles; size 3.5 mm circular needle, 40 cm long.

Note: Work with 1 strand of each yarn held tog throughout = 2 strands held tog.

Rib patt in rows: Multiple of 2 + 1 + 2 selvage sts. **Row 1 (RS):** Selvage st, * p1, k1tbl; rep from * to last 2 sts, p1, selvage st. **Row 2 (WS):** Selvage st, * k1, p1tbl; rep from * to last 2 sts, k1, selvage st. Rep rows 1 and 2.

Rib patt in rnds: Multiple of 2. **Rnd 1:** * P1, k1tbl; rep from * around. Rep rnd 1.

Half-brioche rib: Multiple of 2 + 1. Work according to chart. Numbers at left edge of chart indicate WS rows, number at right edge of chart indicates RS row. Chart begins with a WS row. Work rows 1 – 3 once, then rep rows 2 and 3.

Selvage sts: On every row: Purl first and last st.

I-cord selvage: At beg RS row, sl 3 pwise wyib and pull yarn tight; at end of RS row, k3. At beg WS row, sl 3 pwise wyif and pull yarn tight; at end of WS row, p3.

Full-fashion dbl decrease 1: At beg of RS row, I-cord selvage, 5 sts in half-brioche rib, sp2p (sl 1 kwise, p2tog, pass slipped st over purled st); at end of RS row, work to last 11 sts, p3tog, 5 sts in half-brioche rib, I-cord selvage.

Full-fashion dbl decrease 2: At beg of RS row, selvage st, 5 sts in half-brioche rib, sp2p; at end of RS row, work to last 9 sts, p3tog, 5 sts in half-brioche rib, selvage st.

Gauge: 18 sts and 31 rows = 10 x 10 cm in half-brioche rib with size 4 mm needles and 2 strands held tog.

Back: With size 3.5 mm needles and 2 strands held tog cast on 117 (125, 133) sts. Next row (WS): Selvage st, * k1, p1; rep from * to last 2 sts, k1, selvage st. Work in rib patt as set by last row until piece meas 8 cm from cast-on, ending with a RS row. Change to size 4 mm needles. Maintaining selvage sts, work in half-brioche rib according to chart until piece meas 28 cm from cast-on, ending with a WS row. Shape armholes: Working full-fashion dbl dec 1, dec 2 sts at each end of next RS row, then every alt RS row 5 (6, 7) times = 93 (97, 101) sts. Cont in patt until armhole meas 23 cm, ending with a WS row. Shape shoulders: Next row (RS): Selvage st, k1, sp2p, patt to last 5 sts, p3tog, k1, selvage st. Next row (WS): Selvage st, sl 1 kwise wyif, patt to last 2 sts, sl 1 kwise wyif, selvage st. Rep last 2 rows 14 (15, 16) times = 60 (64, 68) decreased sts. **At same time,** work short-rows every 4th row as foll: Leave 7 sts unworked at end of next 2 rows (see tip). Bind off rem 33 sts.

Front: Work same as back until piece meas 28 (29, 30) cm from cast-on, ending with a WS row. Shape V-neck: Next row (RS): Work to 9 sts before center st, p3tog, work 5 sts in half-brioche rib as established, k1 and turn, leaving rem sts on hold. Left front: Working full-fashion dbl dec 2, dec 2 sts at neck edge every 12th row 8 times and when piece meas 60 (61, 62) cm from cast-on, bind off rem 29 (31, 33) shoulder sts. Right front: Return held sts to needle and with RS facing, rejoin yarn. Next row (RS): K1f&b, work 5 sts in half-brioche rib as established, sp2p, work to end. Complete as given for left front, reversing all shaping.

Finishing: Pin pieces to measurements and block. Sew shoulder and side seams. **Neckband:** With size 3.5 mm circular needle, pick up and k 149 sts evenly around neck edge. Place beg of rnd marker and join for working in rnds. With st at bottom V as a knit st, work in rib patt and work dbl dec at center V on every alt rnd as foll: Work to 1 st before center V st, sl 2 kwise, k1, pass slipped sts over knitted st. When neckband meas 5 cm from pick-up rnd bind off all sts in rib.

SHIRT · ECOPUNO & SILKHAIR

Design 5 – Filati Journal 65



Chart

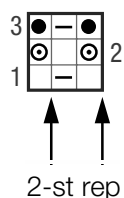
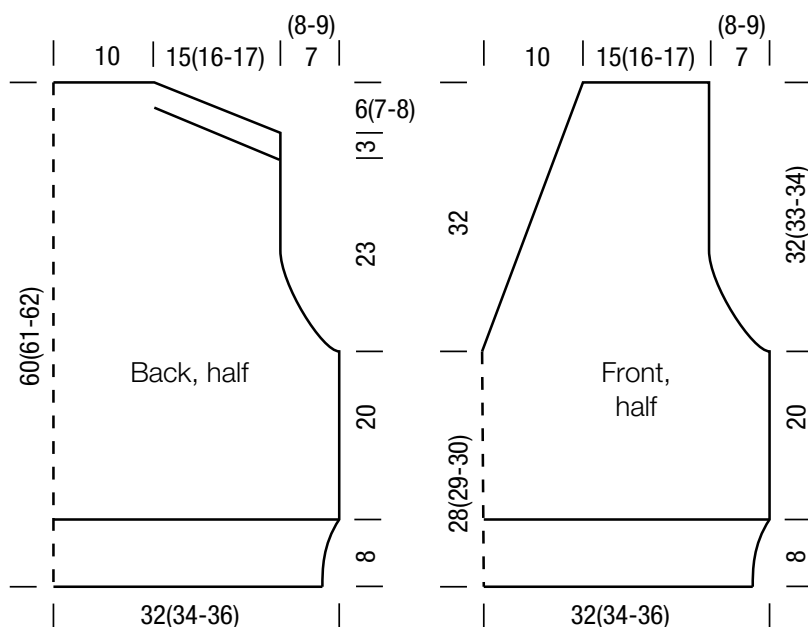


Chart key:

- = k1
- = p1
- = make a yo, then sl next st pwise
- = ktog slipped st with its yo



Tip

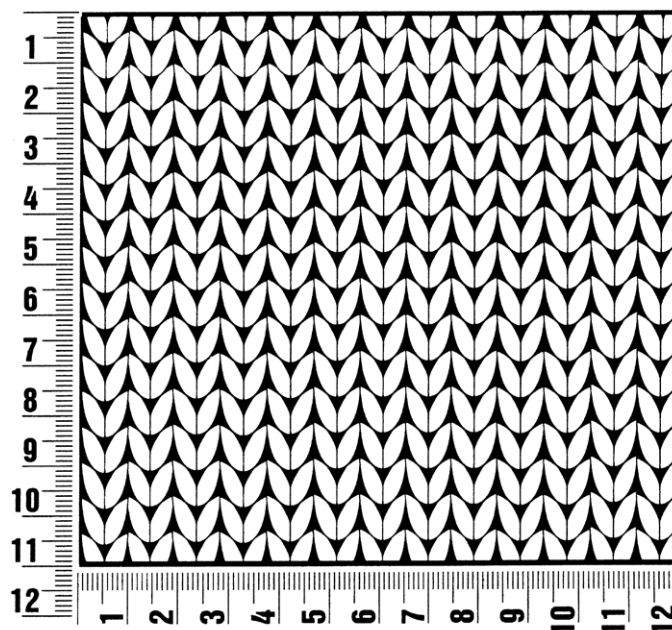
SHORT-ROWS

Turn work after having worked the number of sts indicated in pattern. Sl 1 st as if to purl with yarn in front of work, bring yarn to back of work over top of the needle and pull it **very** tightly; this will rotate the st to the back of the needle, creating a 'double stitch'.

Gauge Swatch

Before you begin ...

...make a gauge swatch. Use the recommended needles, yarns and pattern stitch for your gauge swatch. It should measure approx. 12 cm x 12 cm. Cast-on and bind-off rows, as well as selvage stitches should not be included in the measurement. Pin your swatch and block it as you would the finished pieces of the garment. Count stitches and rows over 10 cm. If your gauge swatch is too small, switch to larger needles. If your gauge swatch is too big, switch to smaller needles.



Abbreviations

beg = begin(ning) · **ch** = chain · **cont** = continue · **dec** = deelas(e)(ing) · **inc** = increas(e)(ing) · **k** = knit · **kwise** = as if to knit
meas = measures · **M1L** = lift strand between sts from front to back and knit this strand through the back loop · **M1R** = lift strand between sts from the back and knit this strand through the front loop · **patt** = pattern · **pm** = place marker · **p** = purl
pwis = as if to purl · **rem** = remain(ing) · **rep** = repeat(s) · **rev St st** = reverse stockinette stitch · **rnd(s)** = round(s) · **RS** = right side · **sc** = single crochet · **skp** = slip 1 stitch as if to knit, knit 1 stitch, pass slipped stitch over knitted stitch · **sk2p** = slip 1 stitch as if to knit, knit 2 together, pass slipped stitch over knitted stitch · **s2kp** = slip 2 stitches as if to knit, k 1 stitch, pass slipped stitches over knitted stitch · **sl** = slip · **st(s)** = stitch(es) · **St st** = stockinette stitch · **tbl** = through the back loop · **tog** = together · **wyib** = with yarn in back of work · **wyif** = with yarn in front of work · **WS** = wrong side · **yo(s)** = yarn over(s)

Publisher's Info

Publisher: Lana Grossa GmbH, Gaimersheim, www.lana-grossa.com

Photographer: Nicolas Olonetzky, www.olonetzky.com