



© Lana Grossa GmbH

Design 18 – Lookbook 15

PULLOVER SETASURI

PULLOVER · SETASURI

Design 18 – Lookbook 15



Size 36/38 (40/42, 44/46, 48/50)

Instructions are given for first size. Figures in parenthesis refer to larger sizes. When only one figure is given, it applies to all sizes.

Materials: 75 (75, 75, 100) g each of Lana Grossa **Setasuri** (69% Suri alpaca, 31% silk; 212 m/25 g) in Light Grey (**col 19**) and Charcoal (**col 18**) and 50 (50, 50, 50) g in Turquoise (**col 28**). Size 3.5 mm needles; short size 3.5 mm circular needle.

St st: K on RS, p on WS.

Selvage sts: On every row: Knit first and last st.

Full-fashion increase: At beg of RS row, selvage st, k2, yo; at end of RS row, work to last 3 sts, yo, k2, selvage st. On foll WS row, ptbl into yos.

Gauge: 24 sts and 29 rows = 10 x 10 cm in St st on size 3.5 mm needles.

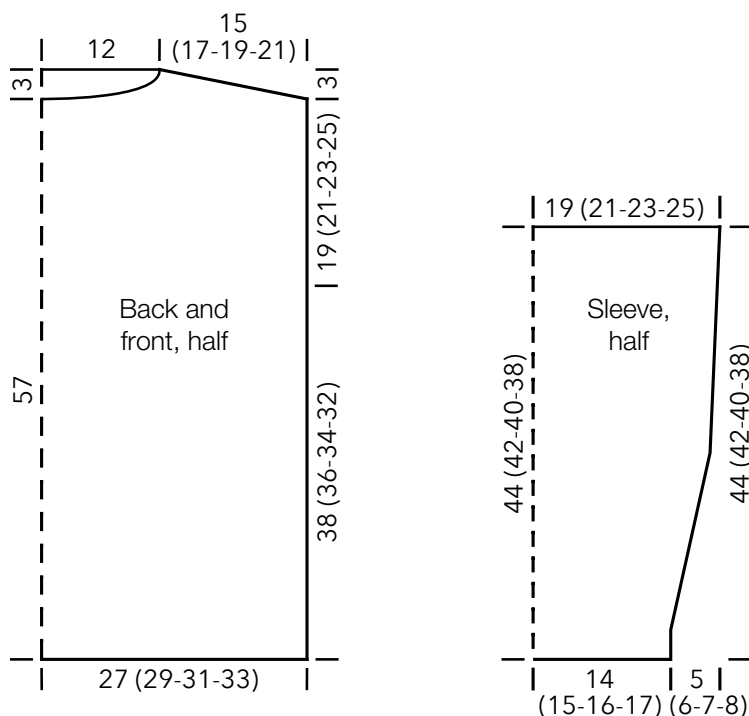
Back: With size 3.5 mm needles and Light Grey cast on 128 (138, 148, 158) sts. Knit 1 WS row. Working first and last st as selvage sts, work in St st for 20 cm, ending with a WS row. Change to Charcoal, cont in St st until piece meas 38 (36, 34, 32) cm from cast-on. Place marker in first and last st on last WS row to indicate beg of armholes. Cont until piece meas 40 cm from cast-on, ending with a WS row. Change to

Turquoise, cont in St st until piece meas 19 (21, 23, 25) cm from armhole markers, ending with a WS row. Shape shoulders: At each shoulder edge bind off 7 sts 4 times, 8 sts 1 time (8 sts 4 times, 9 sts 1 time / 9 sts 4 times, 10 sts 1 time / 10 sts 4 times, 11 sts 1 time). Bind off rem 56 sts.

Front: Work same as back to shoulder shaping. Shape shoulders same as for back. At same time, on first row of shoulder shaping, shape neck as foll: Bind off center 42 sts. Working each side separately, bind off 3 sts at each neck edge 1 time, 2 sts 1 time, 1 st 2 times. No sts rem.

Sleeves: With size 3.5 mm needles and Light Grey cast on 70 (74, 78, 82) sts. Knit 1 WS row. Working first and last st as selvage sts, work in St st for 3 cm, ending with a WS row. Shape sleeve: Working full-fashion inc, inc 1 st at each end of next RS row, then every 4th row 10 (13, 16, 19) times = 92 (102, 112, 122) sts. At same time, when piece meas 22 (21, 20, 19) cm from cast-on, change to Charcoal and when piece meas 44 (42, 40, 38) cm from cast-on, bind off all sts.

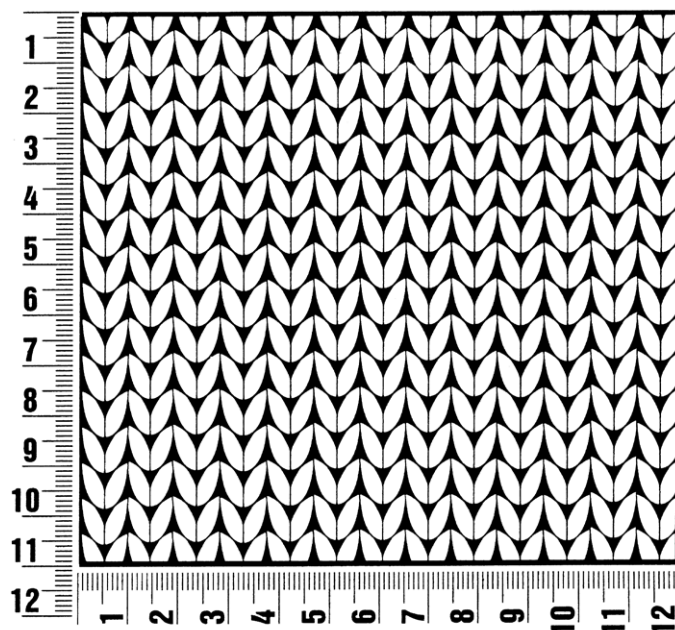
Finishing: Sew shoulder seams. **Neckband:** With size 3.5 mm circular needle and Turquoise, pick up and k 120 sts evenly around neck edge. Place beg of rnd marker and join for working in rnds. Knit 1 rnd. Change to Light Grey. Bind off all sts kwise. Sew on sleeves between markers. Sew side and sleeve seams.



Gauge Swatch

Before you begin ...

...make a gauge swatch. Use the recommended needles, yarns and pattern stitch for your gauge swatch. It should measure approx. 12 cm x 12 cm. Cast-on and bind-off rows, as well as selvage stitches should not be included in the measurement. Pin your swatch and block it as you would the finished pieces of the garment. Count stitches and rows over 10 cm. If your gauge swatch is too small, switch to larger needles. If your gauge swatch is too big, switch to smaller needles.



Abbreviations

beg = begin(ning) · **ch** = chain · **cont** = continue · **dec** = decreas(e)(ing) · **inc** = increas(e)(ing) · **k** = knit · **kwise** = as if to knit
meas = measures · **M1L** = lift strand between sts from front to back and knit this strand through the back loop · **M1R** = lift strand between sts from the back and knit this strand through the front loop · **patt** = pattern · **pm** = place marker · **p** = purl
pwise = as if to purl · **rem** = remain(ing) · **rep** = repeat(s) · **rev St st** = reverse stockinette stitch · **rnd(s)** = round(s) · **RS** = right side · **sc** = single crochet · **skp** = slip 1 stitch as if to knit, knit 1 stitch, pass slipped stitch over knitted stitch · **sk2p** = slip 1 stitch as if to knit, knit 2 together, pass slipped stitch over knitted stitch · **s2kp** = slip 2 stitches as if to knit, k 1 stitch, pass slipped stitches over knitted stitch · **sl** = slip · **st(s)** = stitch(es) · **St st** = stockinette stitch · **tbl** = through the back loop · **tog** = together · **wyib** = with yarn in back of work · **wyif** = with yarn in front of work · **WS** = wrong side · **yo(s)** = yarn over(s)

Publisher's Info

Publisher: Lana Grossa GmbH, Gaimersheim, www.lana-grossa.com

Photographer: Wilfried Wulff, www.wilfriedwulff.com