

How to Use a 12-inch Curve Ruler

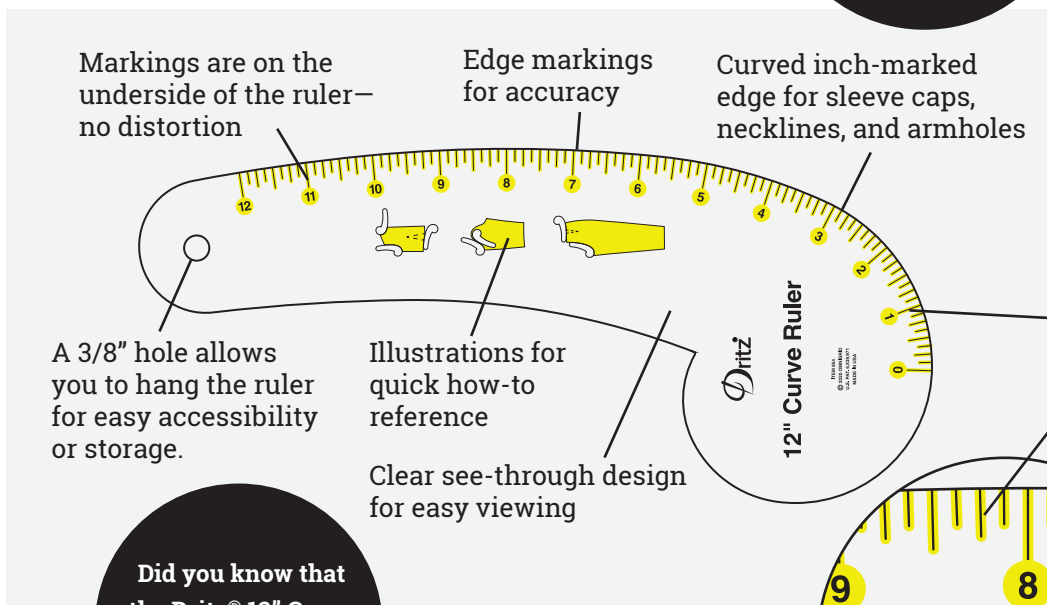
Rulers are essential for your sewing room. They come in a variety of shapes and sizes, many with specific purposes. The 12" Curve Ruler is small with a tight curve and is perfect for adjusting armholes, necklines, and other important design lines. Not all lines requiring adjustment are straight! The inch-marked curve on this ruler allows you to quickly compare sizes of collars, sleeve caps, and other curved sections of your pattern with accuracy for excellent results. Once you see the numerous things you can accomplish with this ruler, you won't want to be without it!

The Dritz® 12" Curve Ruler is laser-cut for accuracy, consistency, and smooth handling.

- You will need:**
- 12" Curve Ruler
 - Marking pencils
 - Flexible See-Thru Ruler
 - Your garment or pattern
 - Tissue paper or tracing paper

- Optional for making a pattern:**
- Grid-marked pattern paper or craft paper

- Optional for modifying apparel:**
- Dress form



Patented double sight-lines create enhanced visibility on both dark and light fabrics. The contrast is great for easy measuring.

Did you know that the Dritz® 12" Curve Ruler is made in the USA?



TECHNIQUE TUTORIAL

You are creative. Sewing and crafting are second nature to you! Making your projects the best they can be is important. This is where accurate measuring comes into play. If you are making or altering a garment, ensuring that the collar fits the neck or the sleeve eases into the armhole properly is crucial. Measuring a curve can be difficult without the right tools. The 12" Curve Ruler gives you a solid, accurately marked edge with which to work. It is small and easy to handle when drawing tightly curved collar edges or adjusting the crotch for gracefully draped pants.

Rulers are indispensable for designing a new garment or altering and repurposing your existing wardrobe. This tutorial is designed to guide you through basic pattern adjustments using the 12" Curve Ruler.

Although an infinite number of measurements and line adjustments can be required when sewing—many more than can be shown in this tutorial—once you have mastered the basic ruler uses shown here, you will be able to adjust any design line necessary. And don't forget, this handy ruler is great for crafts, too. Enjoy!

ILLUSTRATED INSTRUCTIONS

Pages 1–2	Raising or lowering a neckline
Pages 3–4	Changing the shape or size of a collar
Pages 5–6	Decreasing a sleeve cap
Pages 7–8	Raising or lowering the underarm of a sleeve
Pages 9–10	Increasing or decreasing the width of a shoulder at an armhole
Pages 11–12	Raising or lowering an armhole at a side seam
Pages 13–14	Shortening a bodice with a curved waistline
Pages 15–16	Adjusting the curve of a waistline of a skirt or a pair of pants to accommodate unique posture
Pages 17–18	Adjusting pockets
Pages 19–20	Adjusting the length of the crotch curve of a pair of pants
Pages 21–22	Adjusting the center back crotch curve of a pair of pants
Pages 23–24	Adjusting the inseam at the crotch curve of a pair of pants
Page 25	Useful tips and ideas



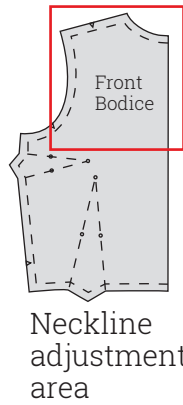
Raising or lowering a neckline

This adjustment may be done to either to the front or the back of the pattern, or both.

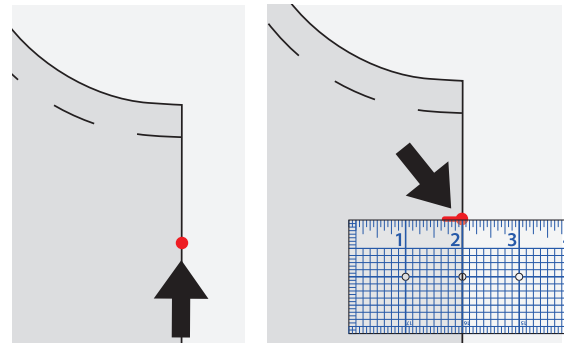
Determine the amount by which you plan to change your pattern. Mark the measured amount up or down from the center front or center back neck intersection and place a dot (1). If raising the neckline, you may need to tape tissue paper to the pattern to extend the edges (not shown).

Use the flexible See-Thru Ruler to draw a short line (about 1/4") perpendicular to the center front at the marked dot (2). Place the 12" Curve Ruler so that the zero mark touches the squared line and the small end points toward the shoulder. Holding the ruler in place at the squared line, pivot the ruler until the opposite end touches the shoulder/neckline seam line intersection (3). To make sure that you like the new curve, slide the ruler to slightly different positions, making sure it continues to touch both points (4). When you are happy with the curve, use the ruler as a guide to draw in the new neckline (5). The squared line at the center of the curved neckline creates a pleasing curve rather than a peaked point (6).

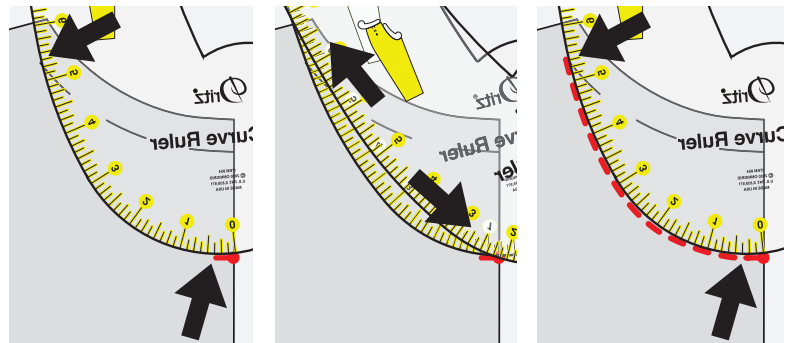
(Instructions for raising or lowering a neckline continue on the next page.)



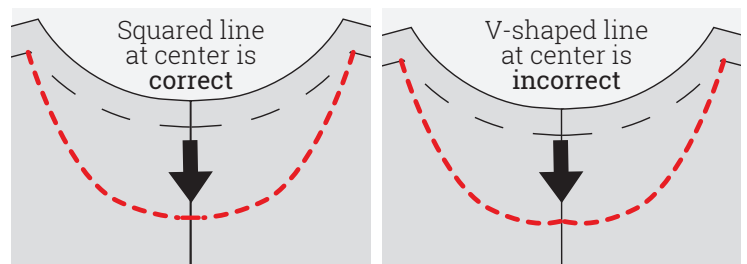
Illustrations show lowering a neckline.



1. Place a dot at new position at center front.
2. Draw a perpendicular line 1/4" long in from the marked dot.



3. Hold ruler at center pattern line; pivot to shoulder/neckline intersection
4. Slide ruler until you like the curve position for the new line.
5. Use the edge of the ruler to draw the new line.



6. When drawn correctly, the center of the new curved neckline has a short straight section. It should not be peaked.

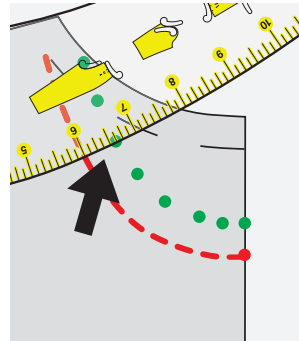


Raising or lowering a neckline (continued)

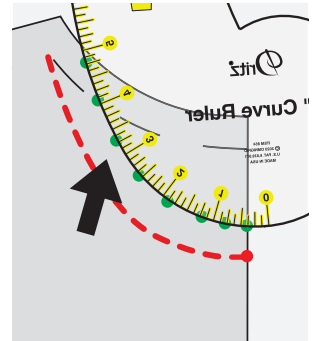
Once the seam line is marked, you must adjust the seam allowance accordingly. To do this, use the ruler to measure the specified amount out from the seam line (5/8", for example), placing dots along the neckline curve (7).

Next, turn the ruler, aligning the numbered edge with the new marks (8). Use the ruler as a guide to draw in the new seam allowance (9). Some angles will cause the seam allowance to require more paper at the shoulder/neckline intersection, so the use of tissue paper may be required (10).

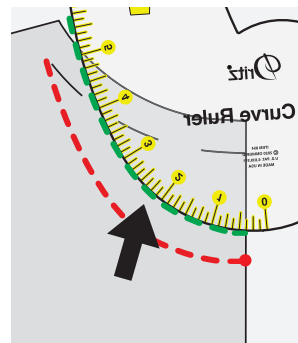
Repeat the process for both the front and back pattern pieces. They must match. Also be sure to adjust any facing or other pattern piece that will eventually be connected to the neckline.



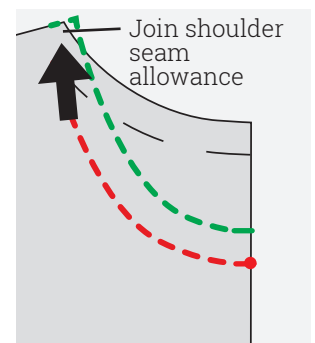
7. Measure and mark the seam allowance.



8. Align the ruler to the dots.

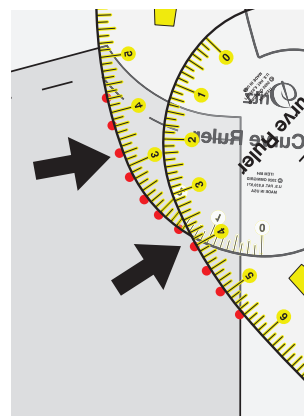


9. Use the ruler as a guide to draw the new seam allowance.



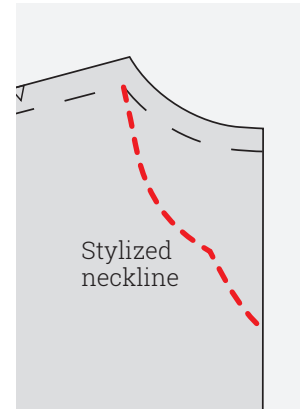
10. Use tissue paper to adjust the shoulder seam allowance as needed.

ALTERNATE METHOD



10. Use multiple dots for stylized neckline curve.

ALTERNATE METHOD



11. Draw new line moving ruler to blend curves.

ALTERNATE METHOD

For stylized necklines, follow these instructions, except draw in the lowered neckline with multiple dots (10). Draw the new line in stages to blend the shape smoothly (11).



Changing the shape or size of a collar

Any part of the ruler can be used as a guide to reshape a pattern piece—not just the numbered edges. The smaller curves of the 12" Curve Ruler are perfect for adjusting a small collar.

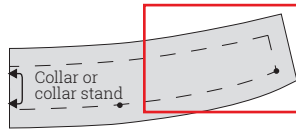
Changing the shape of a mandarin collar or a collar stand:

Perhaps you want to change the square front ends of a mandarin collar to curved ends. First, determine the amount by which you plan to change the pattern.

To do this, line up the small curve of the ruler with the neckline/front seam line intersection. Hold the ruler at this point and pivot the rest of the ruler downward, so the opposite edge of the small curve touches the top seam line of the collar (1). Use the edge of the ruler as a guide to draw the new seam line (2).

Once the seam line is marked, you must adjust the seam allowance accordingly. To do this, use the ruler to measure the specified amount out from the seam line (5/8", for example), placing dots in a row parallel to the seam line (3). Line up the small curved end of the ruler to the new row of dots (4). Use the edge of the ruler as a guide to draw the new seam allowance line (5).

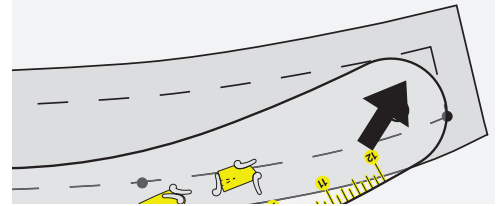
(Instructions for changing the shape or size of a collar continue on the next page.)



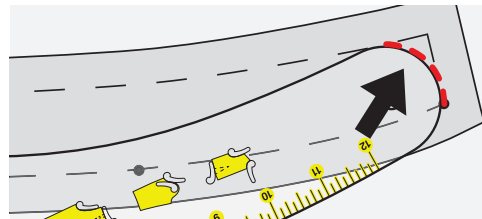
Mandarin collar or collar stand adjustment area

The technique shown for the mandarin collar is the same as for a collar stand.

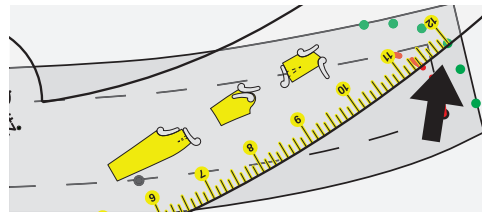
Illustrations show changing the shape of a mandarin collar.



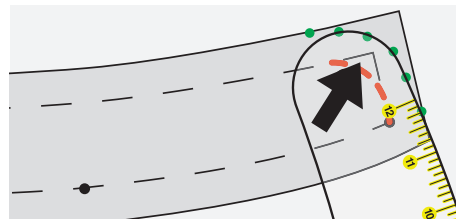
1. Hold the ruler at the front/neckline seam line; pivot so ruler touches top seam line of collar.



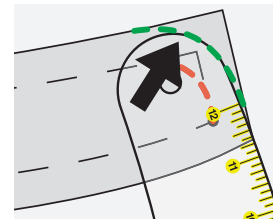
2. Use the edge of the ruler to draw the new seam line.



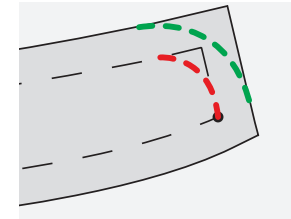
3. Use the ruler to measure out for the seam allowance and place dots.



4. Align the ruler to the seam allowance dots.



5. Use ruler to draw the new seam allowance line.



Completed new seam line and seam allowance line.



Changing the shape or size of a collar (continued)

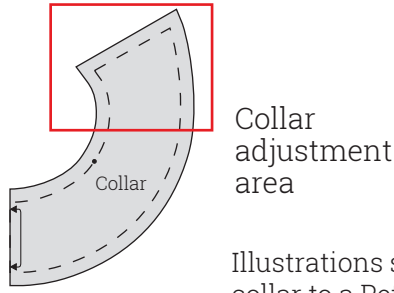
Transforming a pointed collar into a Peter Pan collar:

A Peter Pan collar has curved front edges. The inside curve of the large end of the ruler is a perfect size to create this curve.

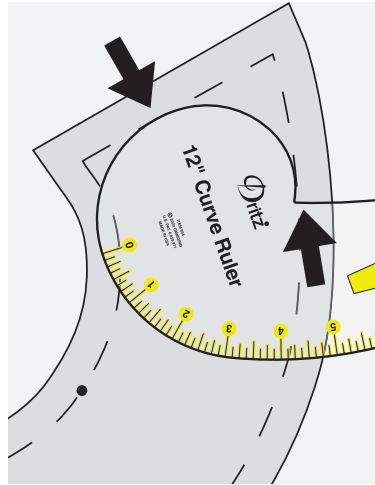
Line up the inner corner of the ruler to the outer seam line of the collar close to the front point. Holding the ruler in place at this point, pivot the long end of the ruler so the curve touches the adjacent seam line of the collar point (1). Use the edge of the ruler as a guide to draw the new seam line (2).

Once the seam line is drawn, you must adjust the seam allowance accordingly. To do this, use the ruler to measure the specified amount out from the seam line (5/8", for example), placing dots in a row parallel to the new curved seam line (3). Use the edge of the ruler as a guide to draw in the new seam allowance (4).

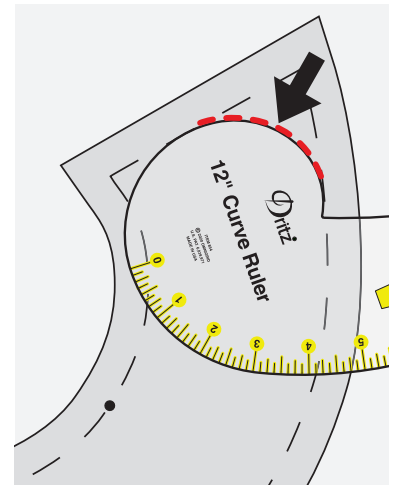
Always make dots to mark an adjustment. Dots are more accurate than dash marks.



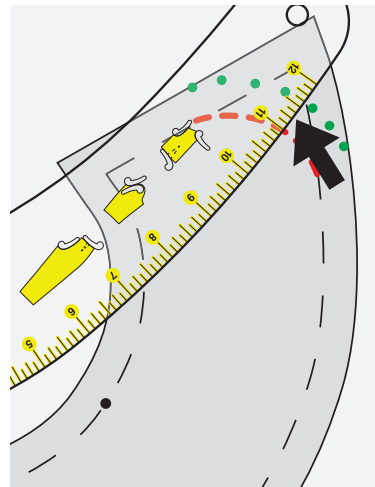
Illustrations show changing a pointed collar to a Peter Pan collar.



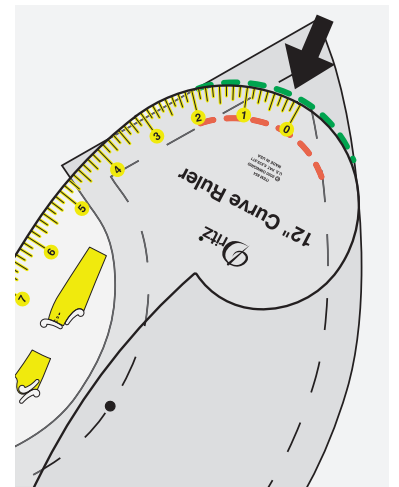
1. Hold the inner point of the ruler at the collar seam line; pivot so ruler touches adjacent seam line of collar.



2. Use edge of ruler as guide to draw new curved seam line.



3. Use ruler to measure out for seam allowance and place dots.



4. Use edge of ruler as a guide to draw new seam allowance line.



Decreasing a sleeve cap

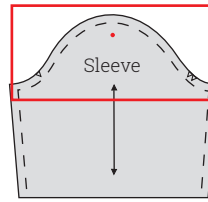
The sleeve cap is always eased into the armhole of a garment. The amount of ease depends on the design. If fabric is stiff and difficult to ease, some reduction of the cap can help. To determine if this is required, tape the front and back pattern pieces together at the shoulder so armhole edges match. Hold a flexible ruler perpendicular to the pattern piece, using its long edge to measure between notches. Then measure the same section on the sleeve cap (not shown). Subtract the shoulder measurement from the sleeve cap measurement. The difference is the ease. About 1½"–2" is a basic amount to fit over the top of the arm. Any more than that amount can be removed. To reduce the cap size, follow the instructions presented here.

From the center of the sleeve cap, measure down half the amount to be removed and place a mark (1).

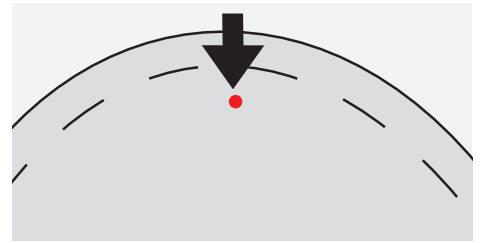
Align the numbered edge of the ruler with the center of the original curved cap seam line (2). Hold the ruler in place there, and pivot the opposite end to the seam line just above the notch (3). (Do not change the area below the notch when making this adjustment).

Then hold the ruler at that lower point on the sleeve cap and pivot the ruler again so the large curved end touches the dot (4).

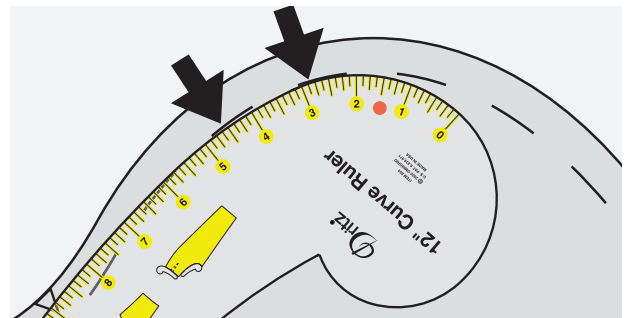
(Instructions for decreasing a sleeve cap continue on the next page.)



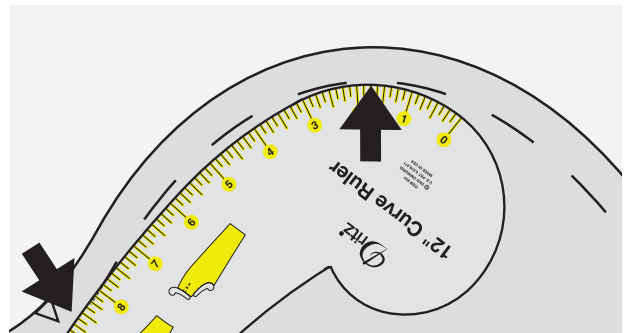
Sleeve cap adjustment area



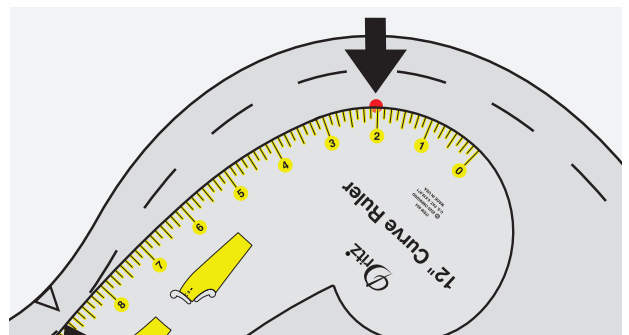
1. Place a dot at new seam line.



2. Align ruler with original cap shape.



3. Hold ruler at top of cap and pivot so opposite end of ruler touches seam line at the notch.



4. Holding ruler at the notch, pivot again so opposite end touches dot.



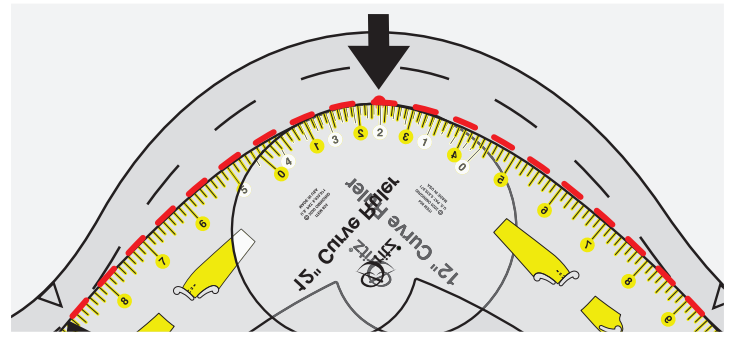
**Decreasing a sleeve cap
(continued)**

Use the ruler as a guide to draw the new line on one side of the dot; then flip the ruler over so it aligns with the dot and the notch on the opposite side of the sleeve cap. Again, use the ruler as a guide to draw the continuation of the new seam line from the dot to the notch. The line should be smooth at the top (5).

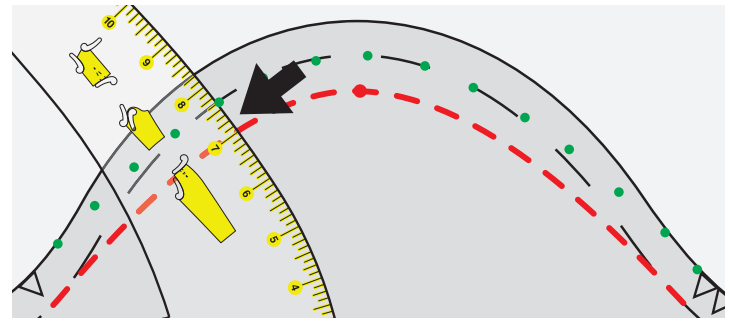
Once the new seam line is marked, you must adjust the seam allowance accordingly. To do this, use the ruler to measure the specified amount out from the seam line (5/8", for example), placing dots along the curve of the sleeve cap (6).

Align the curved edge of the ruler with the new marks (7). Use the edge of the ruler as a guide to draw in the new seam allowance, blending in the line to meet the original pattern line at each notch (8).

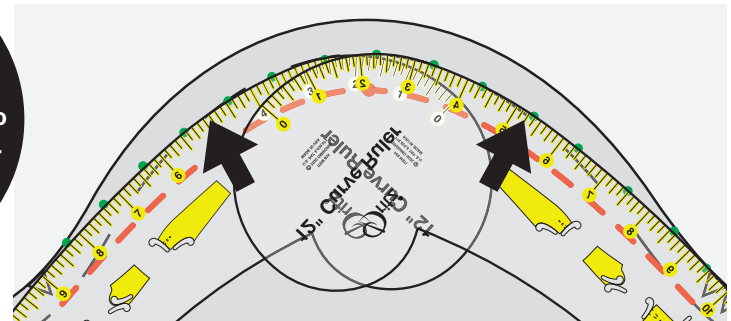
Always test the adjusted cap by sewing a sample from muslin or scrap fabric to make sure the shoulder seam doesn't require adjustment.



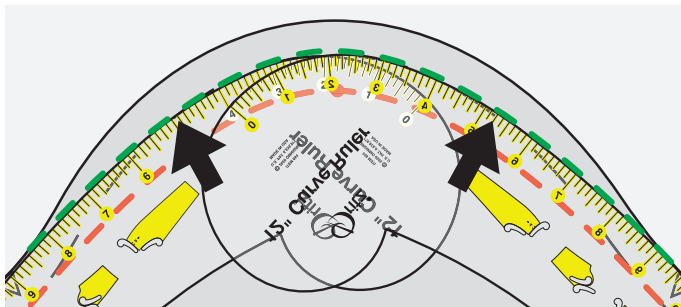
5. Use the ruler as a guide to draw the new seam line. Flip the ruler and repeat the process on the opposite side of the sleeve cap.



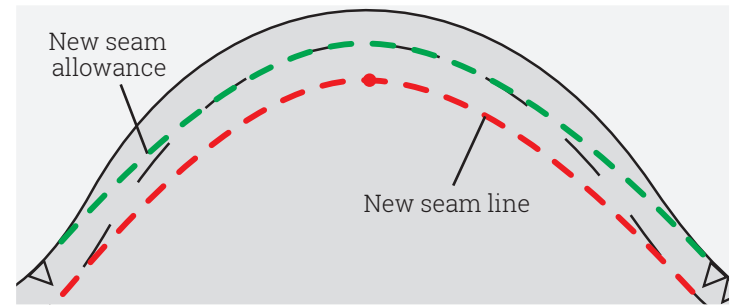
6. Use the ruler to measure out for the new seam allowance and place a row of dots.



7. Align the ruler with the dots.



8. Use the ruler as a guide to draw in the new line for the seam allowance.



Completed new seam line and new seam allowance



Raising or lowering the underarm of a sleeve

A sleeve that is too loose around the armhole needs to have the underarm raised slightly. If it is too tight, the underarm should be lowered slightly. This fitting problem may also require an adjustment to the width of the sleeve around the upper arm (not shown). Any change made to the sleeve armhole must also be made to the bodice armhole.

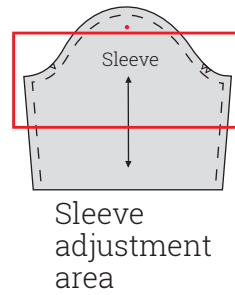
Determine the amount by which you plan to change your pattern.

Use the ruler to measure and place a dot in the desired amount above or below the armhole/underarm seam line intersection (1). If you are decreasing the size of the armhole, tape a piece of tissue paper to the pattern in this area (not shown).

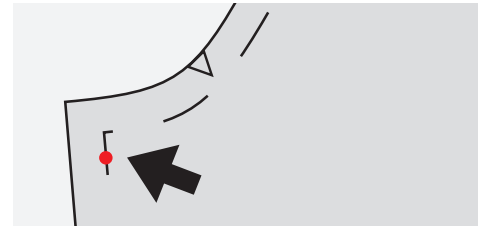
Align the numbered curve of the ruler to the underarm section of the sleeve, so it matches the current seam line as closely as possible from the notch to the armhole/underarm seam intersection (2). Slide the ruler from the notch to the dot, keeping the ruler's edge aligned with the seam line above the notch (3).

Use the ruler as a guide to draw the new seam line (4).

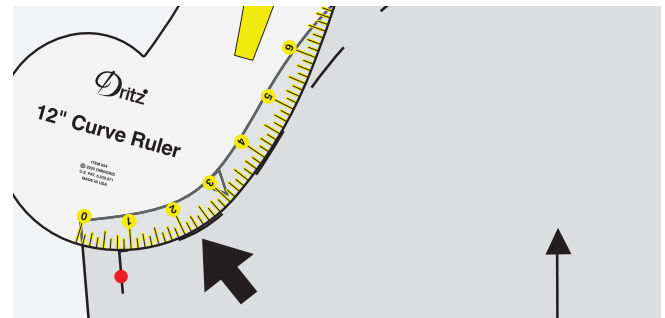
(Instructions for raising or lowering the underarm of a sleeve continue on the next page.)



Illustrations show lowering the underarm.



1. Place a dot in the amount to be adjusted.



2. Align ruler with original seam line.



3. Slide the ruler from the notch area to the dot, keeping it aligned with current seam line above the notch.



4. Use the ruler as a guide to draw in the new seam line.



Raising or lowering the underarm of a sleeve

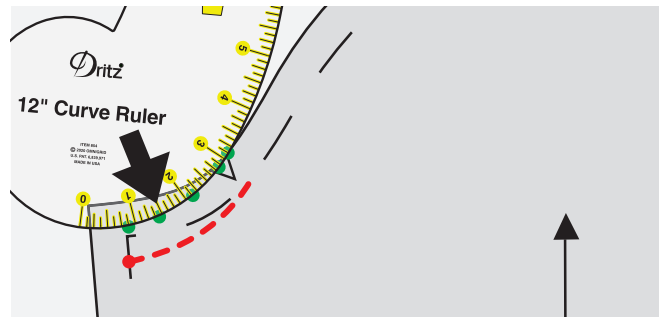
Once the seam line is marked, you must adjust the seam allowance accordingly. To do this, use the ruler to measure out the specified distance ($5/8"$, for example) for the seam allowance and mark the distance with a row of dots (5).

Align the ruler to the row of dots (6). Use the ruler as a guide to draw in the new seam allowance (7).

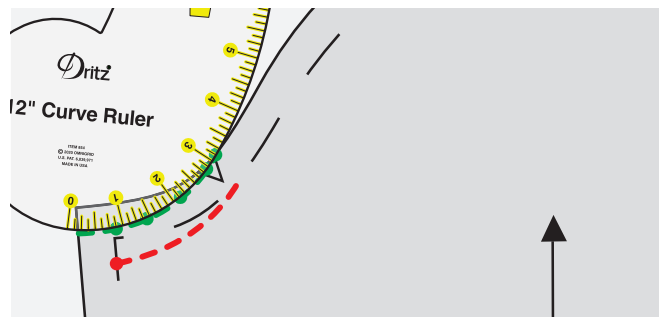
Repeat the process on the other side of the sleeve. The underarm seam lines must match. You must also adjust the underarm of the bodice to accommodate these new curved edges.



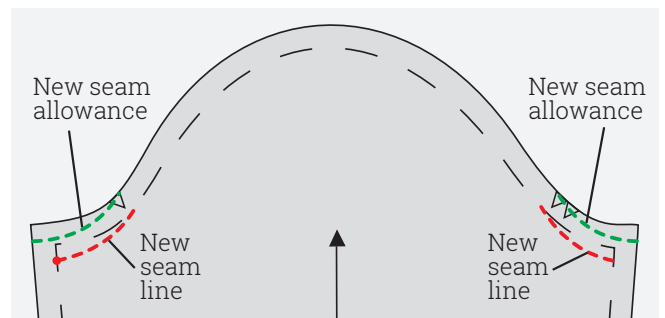
5. Use the ruler to measure the specified amount for the seam allowance.



6. Align ruler with seam allowance dots.



7. Use the ruler as a guide to draw in the new seam allowance line.



The completed new seam line and seam allowance line



Increasing or decreasing the width of a shoulder at an armhole

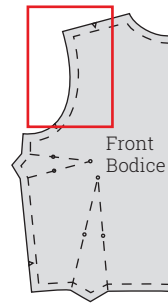
Determine the amount by which you plan to change your pattern.

Place a mark in the desired amount inside or outside of the armhole/shoulder seam line intersection with a dot (1). If increasing the width, tape tissue paper to the armhole at the shoulder.

Match the curve of the numbered edge of the ruler to the upper portion of the armhole seam line as closely as possible from just above the armhole notch to the armhole/shoulder seam line intersection (2). Adjusting the section below the notch is not necessary. Hold the ruler in place at the lowest point where it touches the line and pivot the ruler until it touches the dot near the armhole/shoulder seam intersection (3).

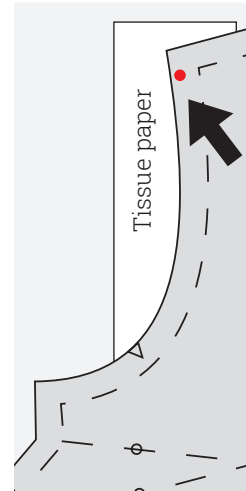
Use the ruler as a guide to draw the new increased or decreased shoulder width (4).

(Instructions for increasing or decreasing the width of a shoulder at an armhole continue on the next page.)

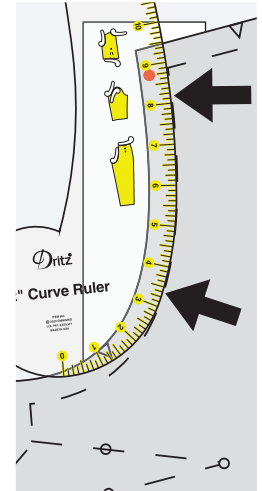


Shoulder adjustment area

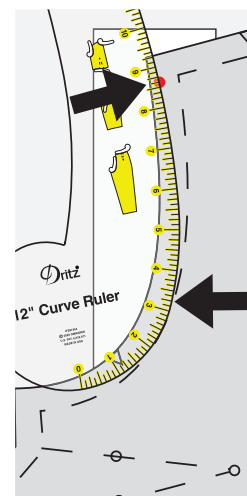
Illustrations show increasing the width.



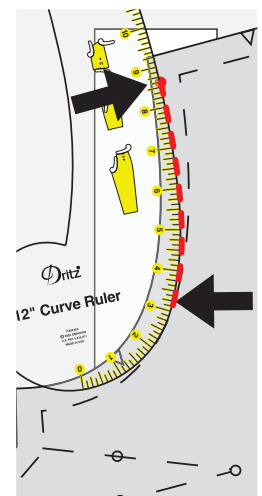
1. Place a dot at the measured point. Add tissue paper if increasing.



2. Align ruler to current seam line.



3. Hold ruler at seam line close to notch and pivot to new dot.



4. Use ruler as a guide to draw new seam line.

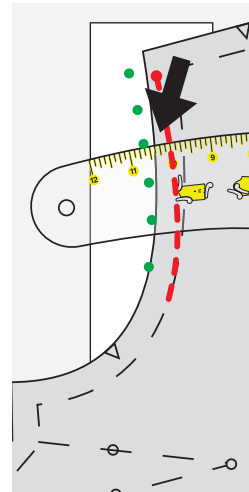


Increasing or decreasing the width of a shoulder at an armhole (continued)

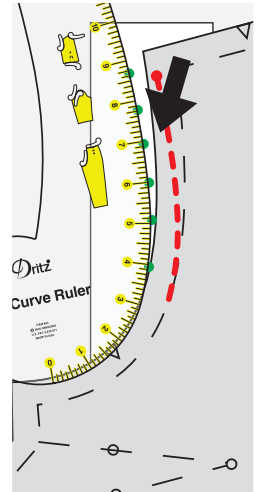
Once the seam line is marked, you must adjust the seam allowance accordingly. To do this, use the ruler to measure out the specified distance (5/8", for example) for the seam allowance and mark with a row of dots (5).

Align the ruler to the row of dots (6). Use the ruler as a guide to draw in the new seam allowance. You must also extend the shoulder line out to the new seam allowance line if the shoulder width was increased (7).

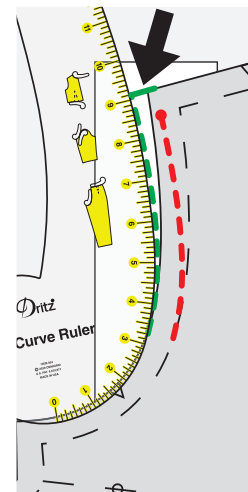
Repeat the process for both the front and back pattern pieces and for any facing that will be attached. If a sleeve will be attached to the armhole, be sure to test the pattern by making a sample with muslin or scrap fabric, as this adjustment might affect the fit of the sleeve.



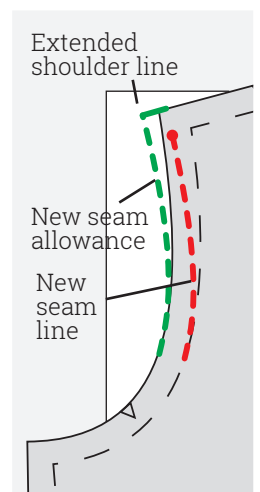
5. Place dots at specified distance for seam allowance.



6. Align ruler to line of dots.



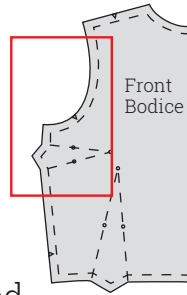
7. Use ruler as a guide to draw new seam allowance.



New seam line and seam allowance line



Raising or lowering an armhole at a side seam



Front Bodice
Armhole adjustment area

If you are changing a pattern from one with sleeves to one without, you may need to raise the armhole slightly; this makes the armhole smaller. Lowering the armhole will make the armhole larger. Any adjustment made to the armhole must also be made to the seam lines of the corresponding sleeve.

Determine the amount by which you plan to change your pattern.

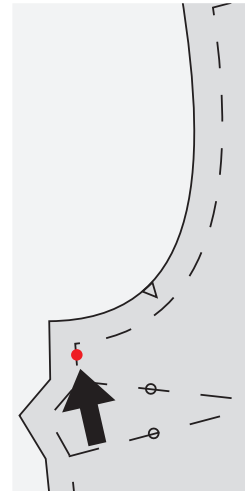
Mark the desired amount above or below the armhole seam line at the side seam intersection with a dot (1). If raising the armhole, tape tissue paper to the armhole area (not shown).

Match the curve of the numbered edge of the ruler to the curve of the lower portion of the armhole's seam line as closely as possible (2). Keep in mind that you are adjusting only the bottom of the armhole, so matching the ruler to the section close to the shoulder is not required. Hold the ruler in place where it touches the seam line close to the notch and pivot the ruler until it touches the dot on the side seam (3).

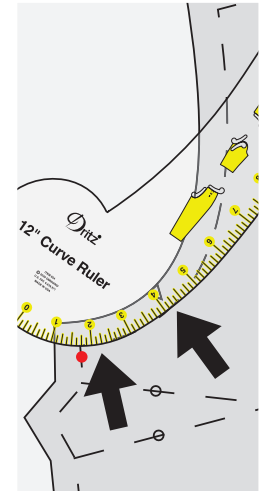
Use the ruler as a guide to draw the new raised or lowered armhole line (4).

(Instructions for raising or lowering an armhole at a side seam continue on the next page.)

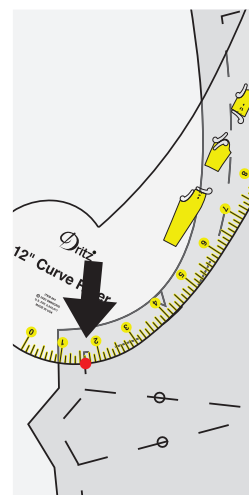
Illustrations show lowering an armhole.



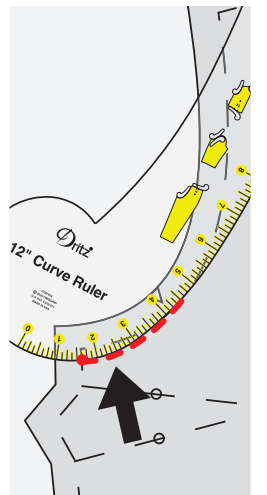
1. Place a dot at the measured point.



2. Align ruler to current seam line.



3. Hold ruler at seam line close to notch and pivot to new dot.



4. Use ruler as a guide to draw new seam line.

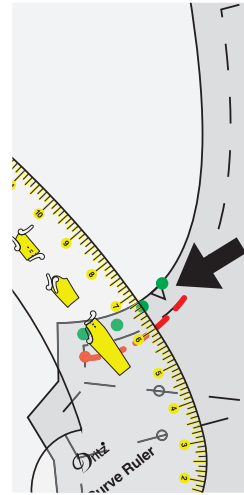


Raising or lowering an armhole at a side seam (continued)

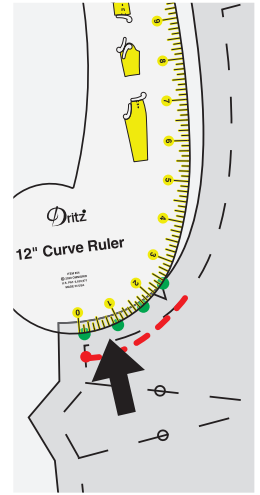
Once the seam line is marked, you must adjust the seam allowance accordingly. To do this, use the ruler to measure up or down the specified distance ($5/8"$, for example) for the seam allowance. Place a row of closely spaced dots (5).

Align the ruler to the line of dots (6). Use the ruler as a guide to draw in the new seam allowance (7).

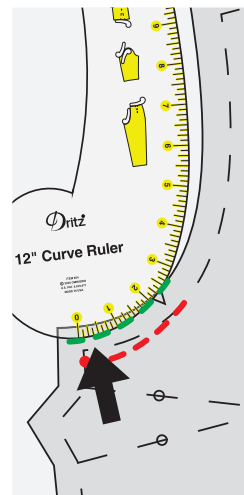
Repeat the process for both the front and back pattern pieces.



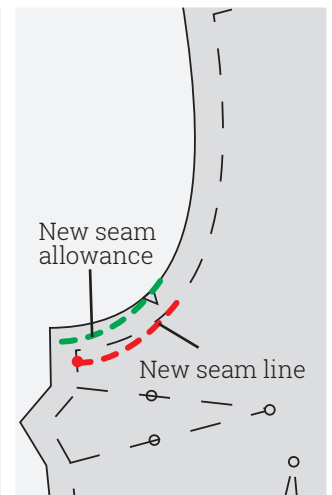
5. Place dots at specified distance for seam allowance.



6. Align ruler to line of dots.



7. Use ruler as a guide to draw new seam allowance.



New seam line and seam allowance line



Shortening a bodice with a curved waistline

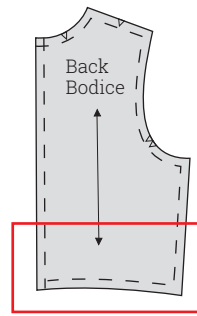
The bodice of a garment usually tapers at the waistline; slight shortening might not affect the fit. However, the more a bodice is shortened, the larger the waist becomes. Conversely, the more a bodice is lengthened, the smaller the waistline becomes. Test-fit the adjusted pattern with muslin or scrap fabric after making adjustments to avoid any unexpected results.

Determine the amount by which you plan to change your pattern. Make several dots in the desired amount up from the pattern's waistline seam line, spreading the dots across the width of the bodice (1).

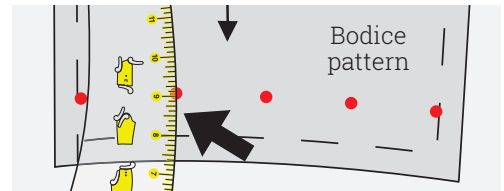
NOTE: Before drawing in a new line, fold any waist darts on the leg lines so the center fold points toward the center front or center back of the pattern (not shown).

Match the ruler to the pattern's current waistline seam line. The curve of the ruler might align only to a portion of the waistline seam line (2). Slide the ruler up to the new dots; then slide it horizontally along the dots as necessary to continue the line (3). Draw in the new shortened bodice seam line (4).

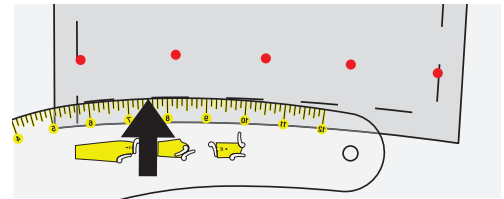
(Instructions for shortening a bodice with a curved waistline continue on the next page.)



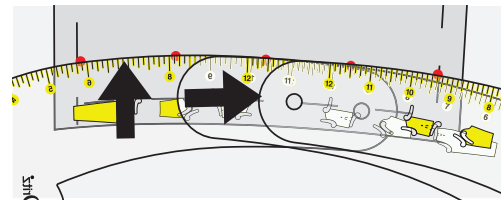
Bodice length adjustment area



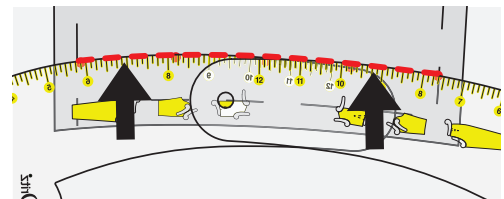
1. Measure and mark new waistline position.



2. Match ruler curve to current seam line.



3. Slide ruler to new marks.



4. Draw the new seam line using the ruler as a guide.

NOTE: These instructions apply only if the bottom edge of the bodice is the waistline. If it is not, follow pattern instructions to use the shorten/lengthen line.

Did you know that the seam lines of a dart are called the "legs" of the dart?

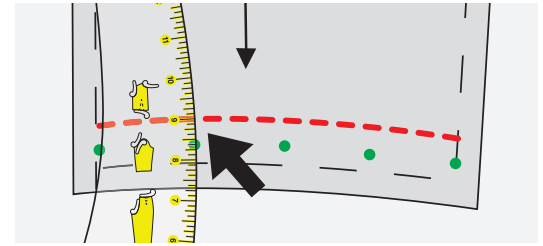


Shortening a bodice with a curved waistline (continued)

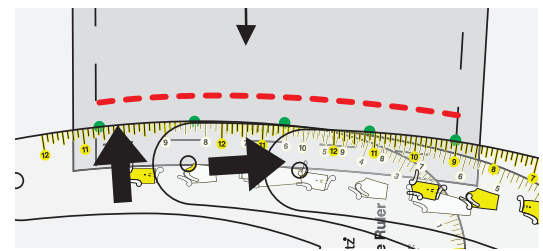
Once the seam line is marked, you must adjust the seam allowance accordingly. To do this, use the ruler to measure down the specified amount from the seam line (5/8", for example), placing dots for the seam allowance (6).

Turn the ruler and align the curved edge with the new marks, sliding as necessary to continue the line as you did for the seam line (7). Use the ruler as a guide to draw in the new seam allowance (8).

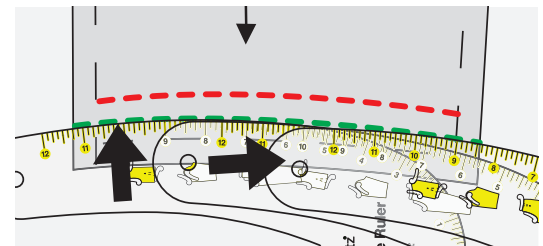
Repeat the process for both the front and back pattern pieces. Even if the center front and center back adjustments are not the same, the side seams must match.



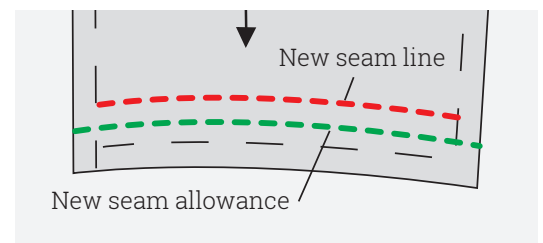
6. Measure and mark new seam allowance.



7. Align curved edge to marks.



8. Use ruler as a guide to draw seam allowance.



Completed seam line and seam allowance.



Adjusting the curve of a waistline of a skirt or a pair of pants to accommodate unique posture

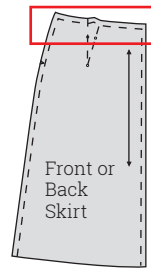
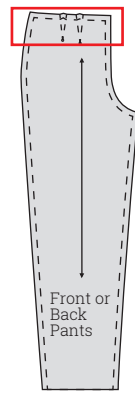
It is very common for the waistline of a skirt or a pair of pants to require an upward or downward adjustment due to a person's unique posture or a high hip.

The angle of the waist of a skirt may be different than that of a pair of pants, but the technique for adjustment is the same.

Determine the amount by which you plan to change your pattern. Place a dot or two in the desired amount above or below the waistline seam area that requires adjustment (1). Fold any waistline dart by bringing the leg lines together so that the center line folds to the center front or the center back of the pattern piece (2). If raising the waistline, tape a piece of tissue paper to the pattern above the waistline area to be adjusted (2).

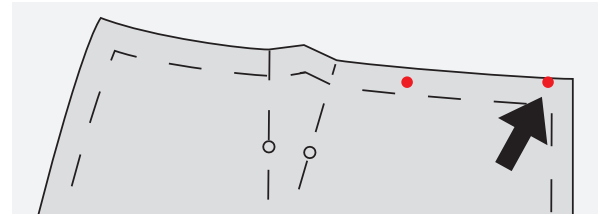
Match the curve of the numbered edge of the ruler as closely as possible to the curve of the current waistline seam line in the area to be adjusted (3). Note that it might align only to a portion of the seam line. Slide the ruler side-ways to continue the line and blend with the original seam line (4). Use the ruler as a guide to draw the new seam line (5).

(Instructions for adjusting the curve of a waistline of a skirt or a pair of pants to accommodate unique posture continue on the next page.)

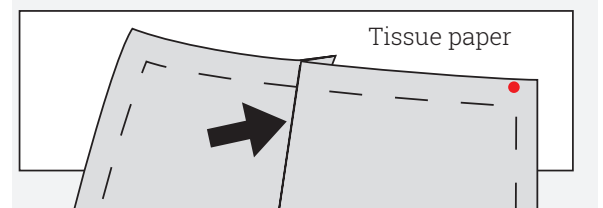


Waist adjustment areas

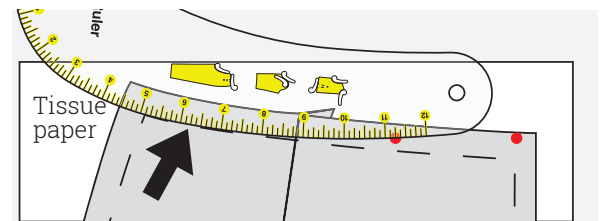
Illustrations show raising the waistline of a skirt.



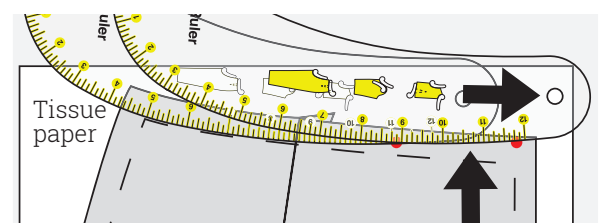
1. Place dots in the measured amount.



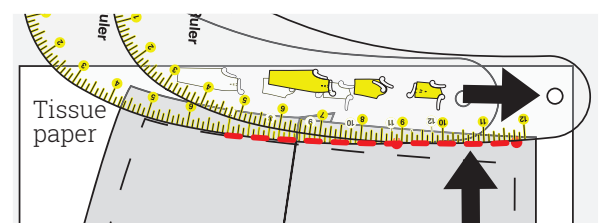
2. Fold dart toward the center. Add tissue paper.



3. Align ruler to the current seam line.



4. Slide ruler to continue the line.



5. Use the ruler as a guide to draw the new seam line.

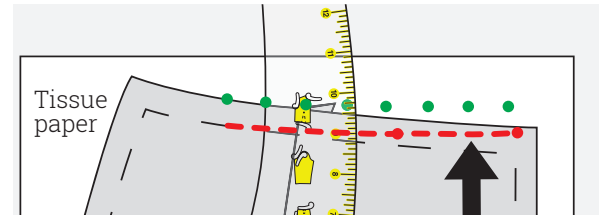


Adjusting the curve of a waistline of a skirt or a pair of pants to accommodate unique posture (continued)

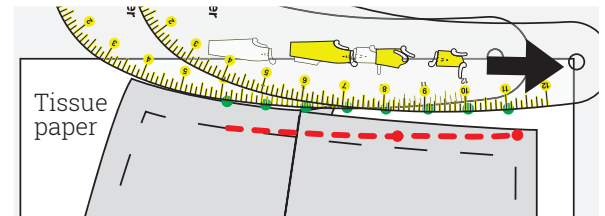
Once the seam line is marked, you must adjust the seam allowance accordingly. To do this, use the ruler to measure the specified distance (5/8", for example) for the seam allowance (6).

Turn the ruler and align the curved edge with the new marks, sliding to continue the line as you did for the seam line (7). Use the ruler as a guide to draw in the new seam allowance (8).

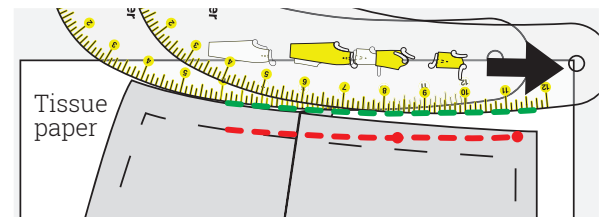
Repeat the process for both the front and back pattern pieces as needed. NOTE: If you have adjusted the center front or center back seam only, the corresponding pattern piece will not require a matching adjustment. Only seams that will be joined to the adjusted area must be changed to match. If you have raised the waistline on a garment that has an attached bodice, the bodice waistline seam may require adjustment as well.



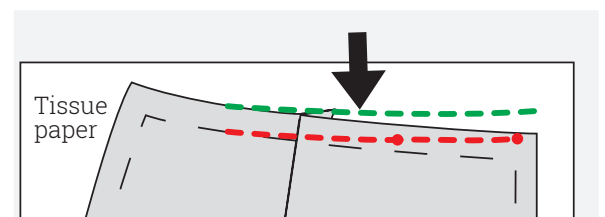
6. Place dots in the measured amount for the seam allowance.



7. Align ruler to the dots and slide to continue the line.



8. Use the ruler as a guide to draw the new seam allowance line.



The completed new seam line and the new seam allowance line.



Adjusting pockets

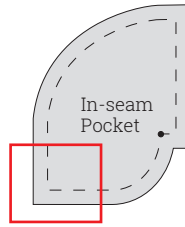
There are many kinds of pockets—including invisible ones that are hidden within seams and patch pockets of all shapes and sizes. It is important for a pocket of any type to have smooth corners. Even hidden in-seam pockets feel better to our fingertips when the corner is rounded instead of square. Pockets are easy to create, add to, or modify for any pattern.

To adjust the corners on an inside pocket:

Place the large curve of the ruler against the pattern so that it touches each of the adjacent seam lines of the bottom corner (1). Use the ruler as a guide to draw a curved seam line (2). Next, use the ruler to measure the specified distance for the seam allowance (5/8", for example) and place dots (3). Align the ruler with the dots (4). Use the ruler as a guide to draw the seam allowance line (5).

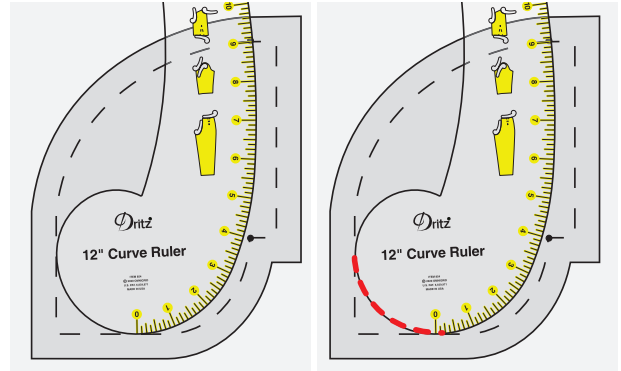
If you want to round an inside pocket of a garment, place the garment on a flat surface, smooth out the pocket and use a marking pencil to draw in the new seam line and seam allowance.

(Instructions for adjusting pockets continue on the next page.)

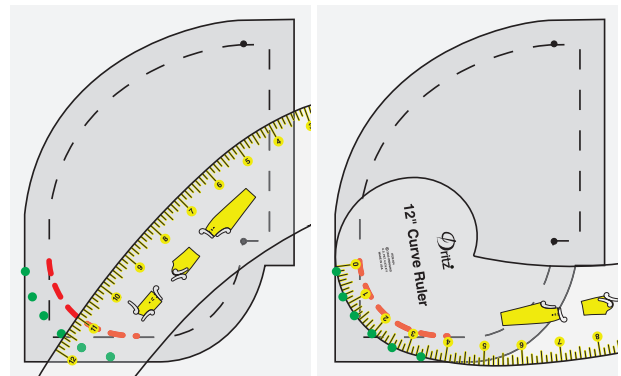


Pocket adjustment area

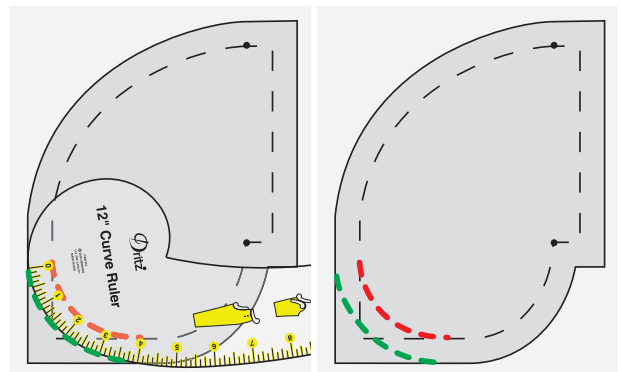
Illustrations show adjusting an in-seam pocket.



1. Align ruler with adjacent seam lines at bottom of pocket.
2. Use ruler as a guide to draw new seam line.



3. Use ruler to measure seam allowance.
4. Align ruler to dots for seam allowance.



5. Use the ruler as a guide to draw seam allowance.
- Completed curved seam line and seam allowance



Adjusting pockets (continued)

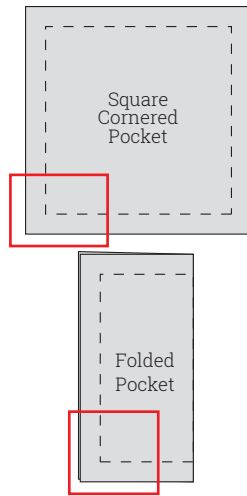
To change a square patch pocket into a pocket with curved corners:

First fold the pocket pattern in half lengthwise and line up the edges. This will ensure that the curves on both corners of the pocket match. Staple or pin the layers to prevent slipping.

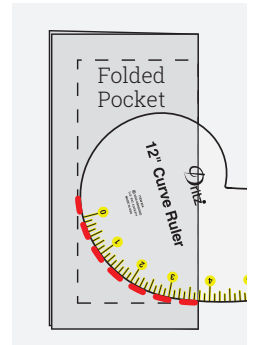
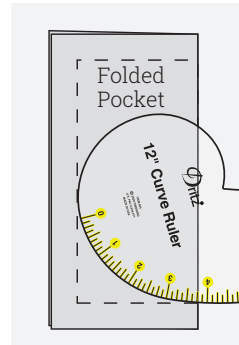
Place the ruler on the pocket pattern so it simultaneously touches the side seam line, the intersection of the fold, and the bottom seam line. Any section of the ruler can be used depending on the desired depth of the curve. Turn it until you like the size of the curve (1). Use the ruler as a guide to draw a curved seam line (2). Then use the ruler to measure the specified distance (5/8", for example) for the seam allowance and place dots (3). Align the ruler with the dots (4).

Use the ruler as a guide to draw the seam allowance line, sliding as needed to align with the dots (5). Cut through both layers along the seam allowance line. Remove the pins or staples and unfold (6).

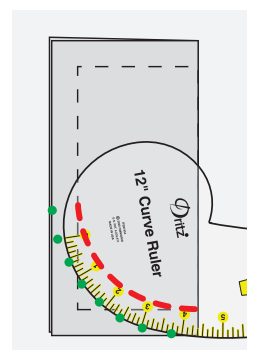
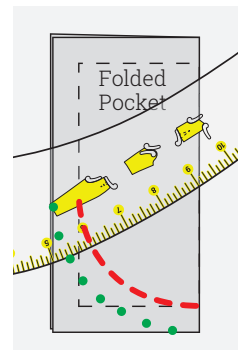
These same techniques can be used to create and adjust different pocket shapes and pocket flaps.



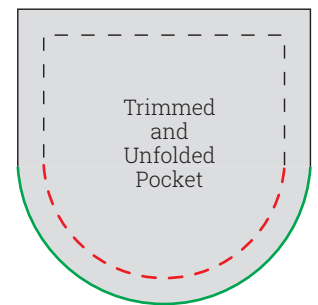
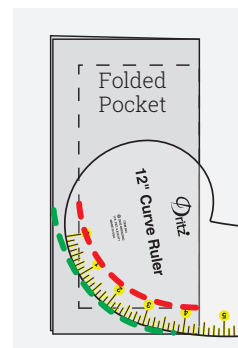
Pocket adjustment area



1. Align ruler with side and bottom seam lines at bottom of pocket.
2. Use ruler as a guide to draw seam line.



3. Use ruler to measure seam allowance.
4. Align ruler to dots for seam allowance.



5. Use ruler as a guide to draw seam allowance.
6. Use scissors to trim the edges. Unfold pocket.



Adjusting the length of the crotch curve of a pair of pants

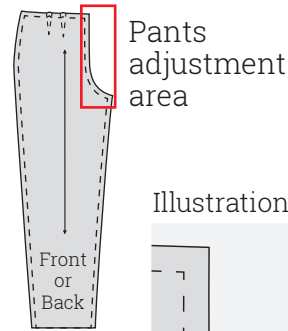
No one wants a pair of ill-fitting pants. Unsightly wrinkles and baggy seats are not nice fashion statements! Correcting these issues can be tricky and multiple fittings are recommended. Many factors contribute to well-fitting pants—the drape from the hip and seat, as well as the fullness or lack thereof. This technique addresses the fit through the crotch and how to correct it if it is either too loose or too tight.

The correct crotch depth on a pair of pants is the measured length from waist to seat of chair (taken while sitting on a firm-seated chair), plus $\frac{3}{4}$ "– $1\frac{1}{4}$ " ease. Raising the crotch curve shortens the length, while lowering the curve increases the length.

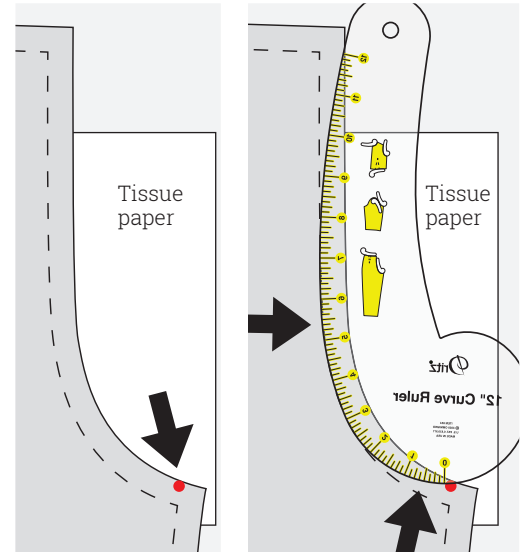
Determine the amount that you plan to change your pattern. If raising the curve, tape tissue paper to the pattern in the crotch area. Place a dot above or below the seam line in the measured amount at the point of the crotch on the front pants pattern (1). Place the ruler on the center front seam line so it aligns with the crotch curve as closely as possible. Slide it up or down until it touches both the original seam line curve and the new dot (2).

Use the edge of the ruler as a guide to draw the new seam line (3). To prevent the tip of the new seam line from accidentally curving upward, square off the end with a straight ruler such as the See-Thru Ruler (4).

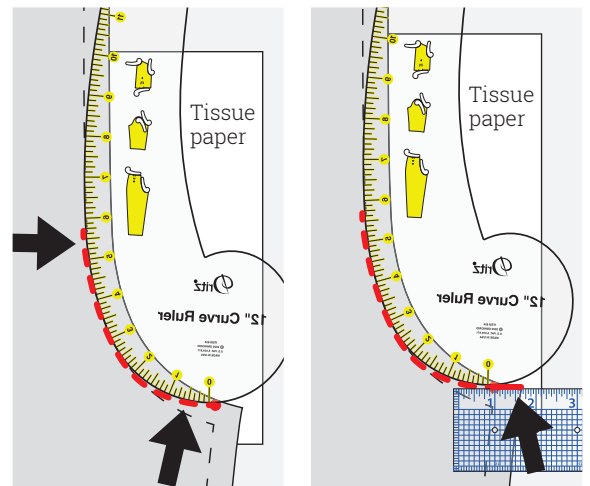
(Instructions for adjusting the length of the crotch curve of a pair of pants continue on the next page.)



Illustrations show raising a crotch curve.



1. Add tissue paper. Place a dot in the desired amount.
2. Slide ruler to align with center front seam line and dot.



3. Draw the new curve.
4. Square off the tip of the curve.



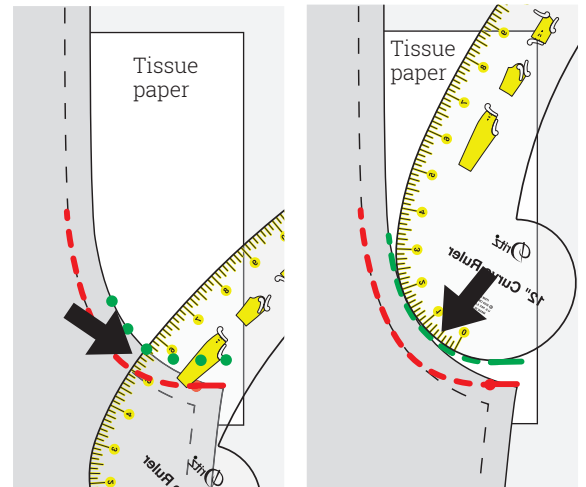
Adjusting the length of the crotch curve of a pair of pants (continued)

Once the new seam line is marked, you must adjust the seam allowance accordingly. To do this, use the ruler to measure the required amount out from the seam line (5/8", for example), marking with multiple dots (5). Use the ruler as a guide to draw the new seam allowance line (6).

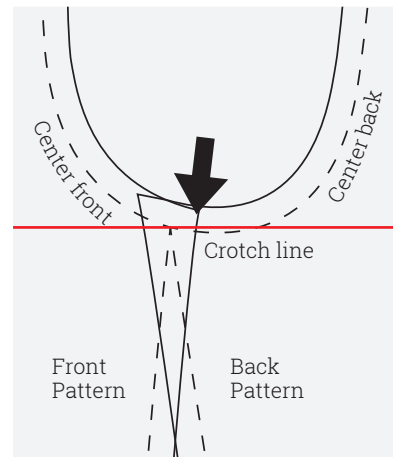
Repeat the process for both the front and the back pattern pieces. The front curve of the crotch is quite different from the back curve, but the depth at the inseam leg seam lines must match. The completed crotch curve should make a continuous smooth curve if aligned as shown in the illustration (7). Notice that the back curve drops below the line but meets the front curve at the crotch line.

Also see our tutorial: "How to Use a 24" Hip Curve Ruler" for hip area adjustments that help correct horizontal wrinkles on pants.

TIP: Most commercial patterns have the crotch line marked on the back only. To check this against your measurements, place the pattern pieces side by side, matching notches. Continue the line through to the front pattern.



5. Add tissue paper. Place a dot in the desired amount.
6. Use the ruler as a guide to draw the seam allowance.



7. Be sure the front and back crotch curves match at the same depth.



Adjusting the center back crotch curve of a pair of pants

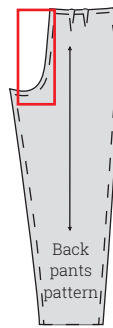
The center front and center back seam lines of a pants pattern differ greatly. The front is mostly straight, ending in a short curve. The back is longer, angled, and ends in a much deeper curve.

Before starting an adjustment for poorly fitting pants, you must ask yourself a question: “Is the center back seam pulling in too tightly, or is the crotch seam hanging too loosely?” To correct a too-tight seam, you need to do something that is counterintuitive—move the curve upward. This will actually add fabric. If the seam hangs too low, move the curve downward to nip in the fabric.

Determine the amount that you plan to change your pattern. If raising the curve, tape tissue paper to the pattern in the crotch area. Mark the measured amount above or below the crotch curve and place dots (1). Place the ruler on the center back seam line and slide it down to match the crotch curve as closely as possible. Turn or flip the ruler if needed until it touches both the original seam line curve and the new dots (2). IMPORTANT: Do not change the intersection of the crotch curve and pants inseam.

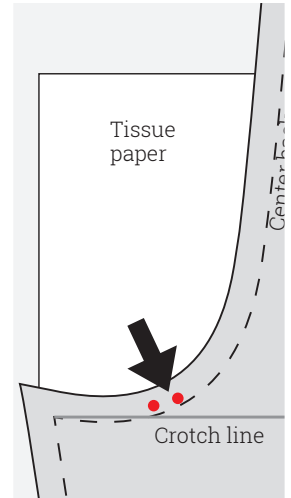
Use the edge of the ruler as a guide to draw the new seam line (3).

(Instructions for adjusting the center back crotch curve of a pair of pants continue on the next page.)

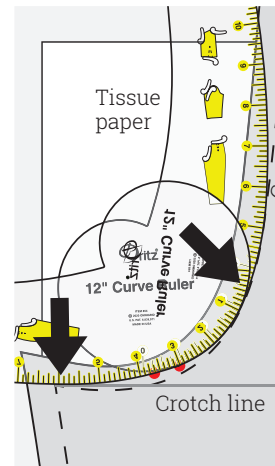


Pants adjustment area

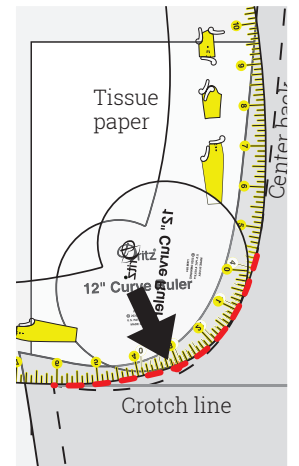
Illustrations show raising the center back crotch curve.



1. Add tissue paper. Place dots in the desired amount.



2. Match the curve of ruler to touch the original seam and the dots.



3. Use the edge of the ruler as a guide to draw the new seam line.

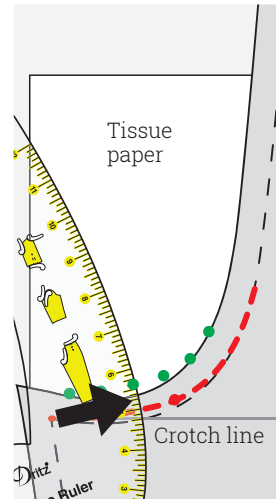


Adjusting the center back crotch curve of a pair of pants (continued)

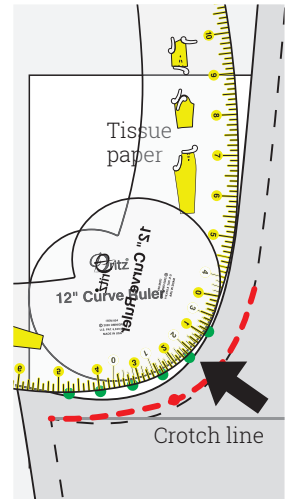
Once the seam line is marked, you must adjust the seam allowance accordingly. To do this, use the ruler to measure the specified amount out from the seam line (5/8", for example), placing dots along the crotch curve (4).

Turn the ruler as necessary, aligning the edge with the new marks (5). Use the ruler as a guide to draw in the new seam allowance (6).

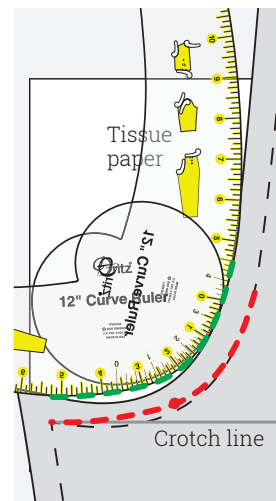
NOTE: Subtle differences in the crotch curve change fit dramatically. Don't forget other adjustments that can be combined with changes to the crotch curve, such as hip-area or waist-height adjustments. Sometimes fixing a problem in one area causes a chain-reaction and new problems might appear somewhere else. Always test any change with muslin or scrap fabric. It may take several adjustments to obtain a beautiful fit. Have patience!



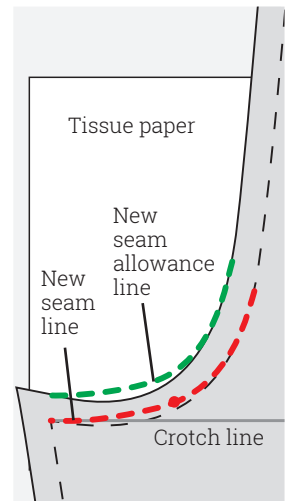
4. Use the ruler to measure the seam allowance.



5. Match curve of ruler with dots.



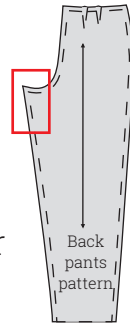
6. Use the ruler as a guide to draw the seam allowance.



Completed new seam line and seam allowance line



Adjusting the inseam at the crotch curve of a pair of pants



Pants adjustment area

If your pants feel too tight at the top of the inseam, making horizontal wrinkles under the seat, or if there is excess fabric under the seat between the legs, you can add or subtract from the width of the crotch curve to correct these issues. As little as ¼" can make a big fitting difference. As always, test your pattern after adjustment with muslin or scrap fabric to confirm the fit or make further adjustments.

Determine the amount that you plan to change your pattern. If adding width, tape tissue paper to the pattern at the leg inseam/crotch intersection area. Mark the measured amount inside or outside the inseam seam line at the inseam/crotch seam line intersection, and place a dot (1).

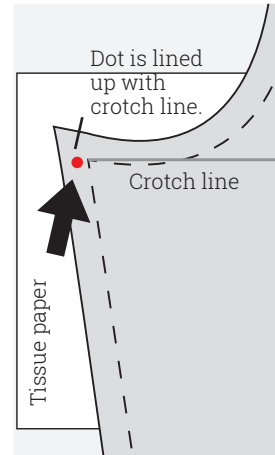
Match the long curved edge of the ruler to the inseam seam line as closely as possible. Hold the ruler on the inseam seam line 4"–5" below the crotch line, and pivot until it touches the new dot (2).

Use the edge of the ruler as a guide to draw the new seam line (3).

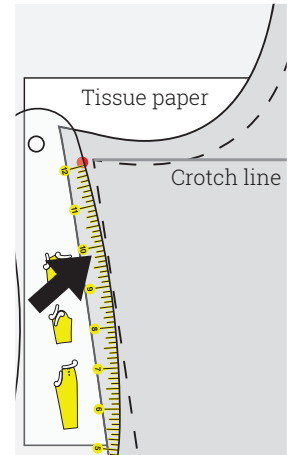
(Instructions for adjusting the inseam at the crotch curve of a pair of pants continue on the next page.)

NOTE: This adjustment can be done in conjunction with other crotch adjustments. It can also be done to the back or front only, without adjusting the corresponding pattern piece.

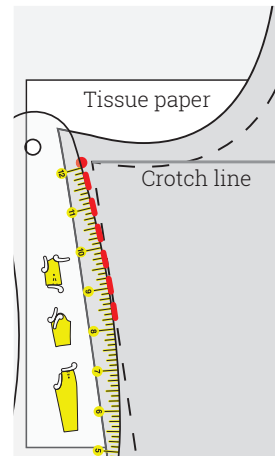
Illustrations show increasing the width at the inseam.



1. Add tissue paper. Place a dot in the desired amount.



2. Match the curve of ruler to touch the original seam and the dot.



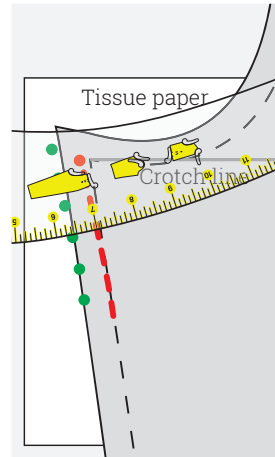
3. Use the edge of the ruler as a guide to draw the new seam line.



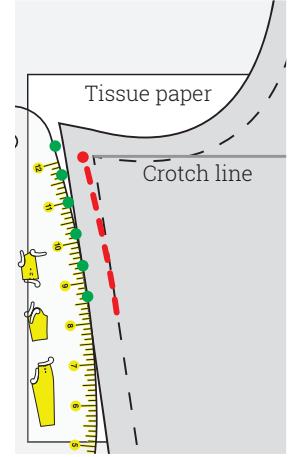
Adjusting the inseam at the crotch curve of a pair of pants (continued)

Once the seam line is marked, you must adjust the seam allowance accordingly. To do this, use the ruler to measure the specified amount out from the seam line (5/8", for example), placing dots parallel to the inseam seam line (4).

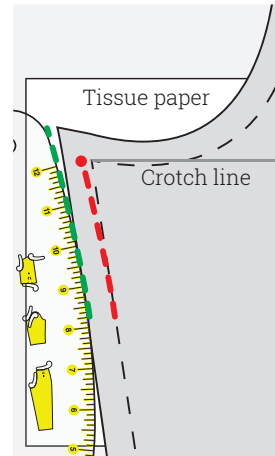
Turn the ruler, aligning the edge with the new marks (5). Use the ruler as a guide to draw in the new seam allowance (6). If the width was increased, connect the new inseam seam allowance line to the seam allowance at the crotch (7).



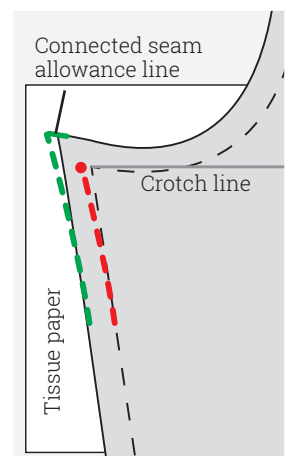
4. Use the ruler to measure the seam allowance.



5. Line up the ruler edge along the dots.



6. Use the ruler as a guide to draw the seam allowance line.



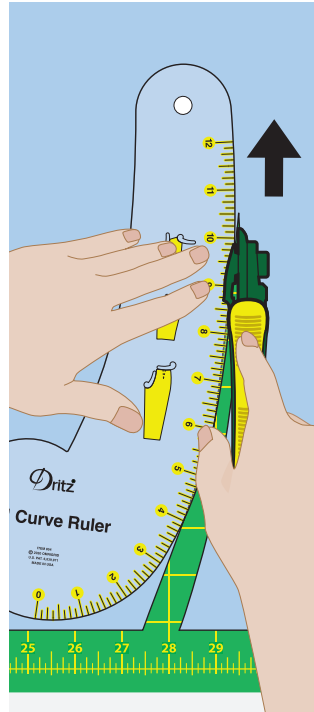
7. Connect new seam allowance line to seam allowance line at crotch.



Useful tips and ideas

Cutting:

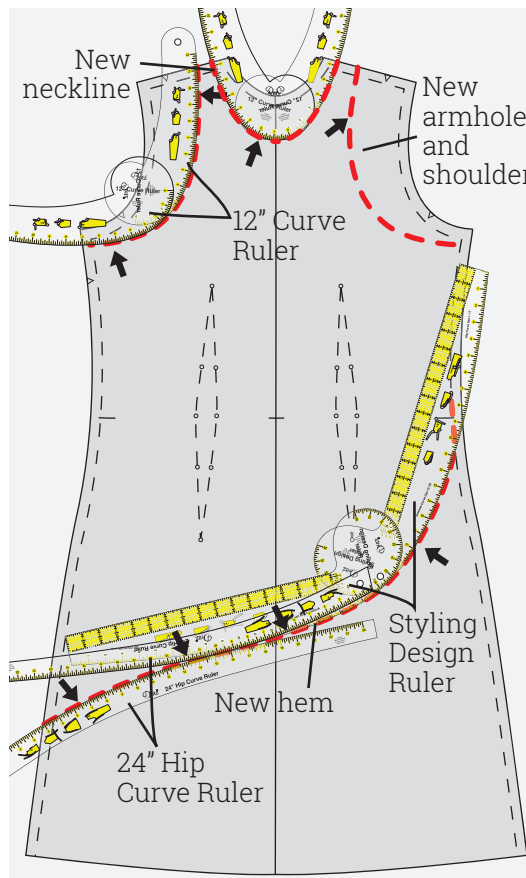
The 12" Curve Ruler is made of 1/8" thick, laser-cut acrylic. As such, it offers an edge that is perfect for rotary cutting. While the fabric for most garments is cut with scissors, there are always projects that might benefit from precise rotary cut edges, even with a small ruler, such as the 12" Curve. To use the ruler with a rotary cutter, always push down firmly on the ruler with your non-cutting hand. Hold the cutter so the blade is perpendicular to the cutting surface and push the cutter away from you. A cutting mat is a must (1).



1. Press down firmly on ruler; hold cutter perpendicular to mat with blade against ruler edge. Push cutter away from you to cut.

Combine rulers:

There are three Dritz® fashion rulers—the Styling Design Ruler, the 24" Hip Curve Ruler, and the 12" Curve Ruler. Each has a distinctly different shape and unique features. While each works independently for special techniques, using more than one to complete a project makes perfect sense. Not all lines are created equal. Having all three rulers increases your options for drawing smooth, creative lines. Start by drawing one section with one ruler and complete the line with the another, sliding to create a smoothly transitioned line (2). So easy and convenient!



2. Use multiple rulers to draw creative style lines. This sample uses all three to convert a dress into an asymmetric halter tunic.

See our other ruler tutorials:

“How to Use a 24" Hip Curve Ruler” and
“How to Use a Styling Design Ruler”

