

# LANA GROSSA



© Lana Grossa GmbH

Design 17 – Häkeln 05

---

## **CROCHET TOP ECOPUNO**

# CROCHET TOP · ECOPUNO

## Design 17 – Häkeln 05



**Size** 36/38 (40/42)

Instructions are given for smaller size. Figure in parenthesis refers to larger size. When only one figure is given, it applies to both sizes.

**Materials:** 150 (200) g of Lana Grossa **Ecopuno** (72% cotton, 17% Merino wool, 11% baby alpaca; 215 m/50 g) in Curry (col 53), 100 g in Pearl Beige (col 66) and 50 g in Yolk (col 80). Size 4 mm crochet hook.

**Chart patt:** Worked in rnds. Ch 6, sl st in first ch to form ring. Numbers on chart indicate rnds. Work first rnd into ring, join rnd with sl st in top of beg ch-3. Only one half of rnds 2 – 7 is shown, with one quarter shown in grey. Rep quarter shown in grey 2 more times for a complete rnd. Turn after each rnd. Beg on rnd 2, work dc groups into ch-sp on rnd below. Work rnds 1 – 7 once, then rep rnds 6 – 7, working incs as established. Patt rep is shown in grey at top edge of chart.

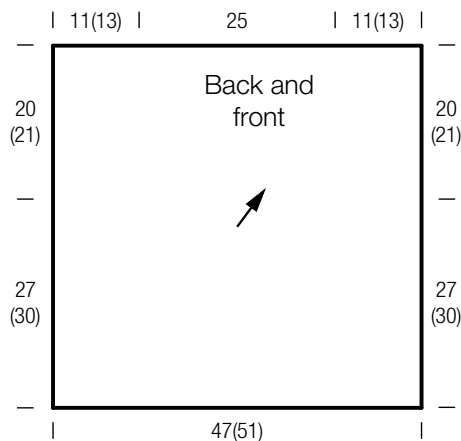
**Stripe sequence:** 2 rnds Pearl Beige, 1 rnd Yolk, 1 rnd Pearl Beige, 1 rnd Curry = 5 rnds. Rep these 5 rnds throughout. To change color, work to last yarn over in old color, pick up new color and complete st with new color.

**Gauge:** 20 sts = 5 patt reps and 11 rnds = 9 x 10 cm in chart patt with size 4 mm hook.

**Front:** Arrow on schematic shows direction of work. With size 4 mm hook and Pearl Beige ch 6, sl st in first ch to form ring. Foll stripe sequence and work chart for 26 (28) rnds and piece meas 23.5 (25.5) cm. Fasten off.

**Back:** Work same as front, only entirely in Curry.

**Finishing:** Pin pieces to measurements and block. With beg of rnd at bottom of center, sew shoulder seams, leaving center 25 cm open for neck. Sew side seams over 27 (30) cm, leaving rem 20 (21) cm open for armholes.

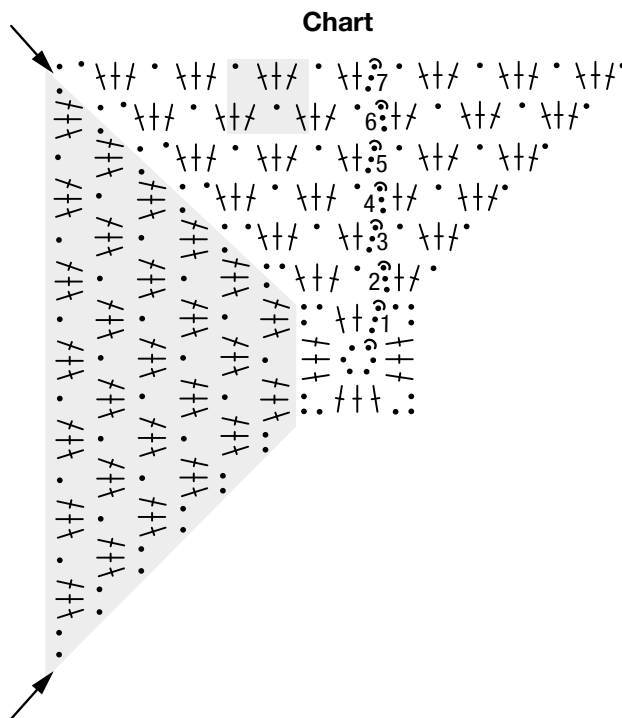


**Back view of top**



**Chart key:**

- = chain (ch)
- ~ = slip stitch (sl st)
- † = double crochet (dc)



## Gauge Swatch

### Before you begin ...

...make a gauge swatch. Use the recommended needles, yarns and pattern stitch for your gauge swatch. It should measure approx. 12 cm x 12 cm. Cast-on and bind-off rows, as well as selvage stitches should not be included in the measurement. Pin your swatch and block it as you would the finished pieces of the garment. Count stitches and rows over 10 cm. If your gauge swatch is too small, switch to larger needles. If your gauge swatch is too big, switch to smaller needles.



## Abbreviations

**beg** = begin(ning) · **ch** = chain · **cont** = continue · **dec** = decreas(e)(ing) · **inc** = increas(e)(ing) · **k** = knit · **kwise** = as if to knit  
**meas** = measures · **M1L** = lift strand between sts from front to back and knit this strand through the back loop · **M1R** = lift strand between sts from the back and knit this strand through the front loop · **patt** = pattern · **pm** = place marker · **p** = purl  
**pwise** = as if to purl · **rem** = remain(ing) · **rep** = repeat(s) · **rev St st** = reverse stockinette stitch · **rnd(s)** = round(s) · **RS** = right side · **sc** = single crochet · **skp** = slip 1 stitch as if to knit, knit 1 stitch, pass slipped stitch over knitted stitch · **sk2p** = slip 1 stitch as if to knit, knit 2 together, pass slipped stitch over knitted stitch · **s2kp** = slip 2 stitches as if to knit, k 1 stitch, pass slipped stitches over knitted stitch · **sl** = slip · **st(s)** = stitch(es) · **St st** = stockinette stitch · **tbl** = through the back loop · **tog** = together · **wyib** = with yarn in back of work · **wyif** = with yarn in front of work · **WS** = wrong side · **yo(s)** = yarn over(s)

### Publisher's Info

**Publisher:** Lana Grossa GmbH, Gaimersheim, www.lana-grossa.com

**Photographer:** Lana Grossa GmbH