



© Lana Grossa GmbH

Design 40 – Merino Edition 03

PONCHO COOL WOOL BIG

PONCHO · COOL WOOL BIG

Design 40 – Merino Edition 03



Size approx. 102 (112) cm shoulder circumference; approx. 50 (58) cm length

Instructions are given for smaller size. Figure in parenthesis refers to larger size. When only one figure is given, it applies to both sizes.

Materials: 300 (350) g of Lana Grossa **Cool Wool Big** (100% superfine Merino wool; 120 m/50 g) in Grey Blue (**col 1019**). Size 4 mm needles.

Rib patt: K3, p3.

Gauge: 27 – 28 sts and 28 rows = 10 x 10 cm in rib patt, measured slightly stretched.

Poncho: Cast on 281 (311) sts. Next row (WS): Selvage st, * p3, k3; rep from * to last 4 sts, p3, selvage st. Work in rib patt as set by last row until piece meas 10 cm from cast-on, end-

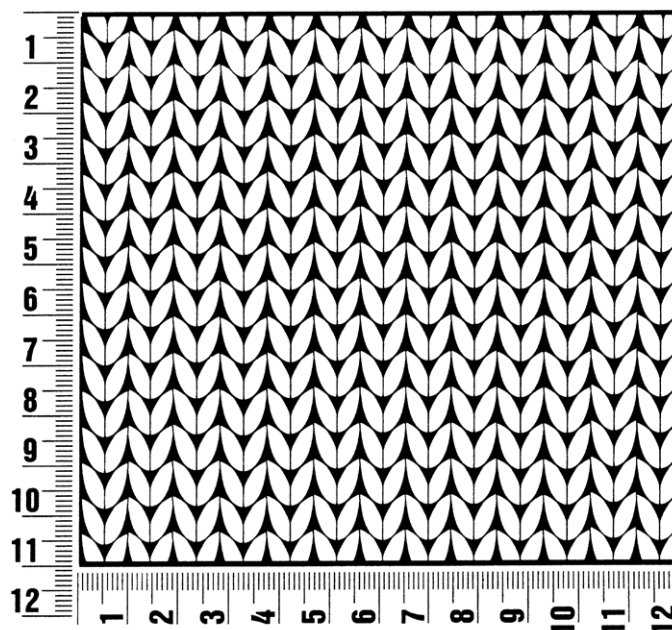
ing with a WS row. Begin working short-rows according to chart and as foll: Row 1 (RS): Patt to last 5 sts, k2tog, yo, turn work. Row 2 and all foll WS rows: Work sts as they appear. Work chart rows 3 and 4, then work chart rows [1 – 4] 28 (32) more times = 223 (245) sts. Note: 2 sts are decreased over 4 rows and p3 sections are decreased to p1. Next row (RS): Knit to end of row and at same time, k2tog rem p1 with next k1 and k2tog all yos with next st. Next row (WS): Work I-cord bind-off: Cast on 3 sts onto left needle. * K2, k2tog tbl, transfer 3 sts from right needle to left needle; rep from * to end. Sk2p last 3 sts, cut yarn and fasten off last st.

Finishing: Sew seams, matching * to * and • to • on schematic. Sew each row of the I-cord bind-off to each row of the vertical edge, leaving bottom 10 cm open for slit.

Gauge Swatch

Before you begin ...

...make a gauge swatch. Use the recommended needles, yarns and pattern stitch for your gauge swatch. It should measure approx. 12 cm x 12 cm. Cast-on and bind-off rows, as well as selvage stitches should not be included in the measurement. Pin your swatch and block it as you would the finished pieces of the garment. Count stitches and rows over 10 cm. If your gauge swatch is too small, switch to larger needles. If your gauge swatch is too big, switch to smaller needles.



Abbreviations

beg = begin(ning) · **ch** = chain · **cont** = continue · **dec** = decreas(e)(ing) · **inc** = increas(e)(ing) · **k** = knit · **kwise** = as if to knit
meas = measures · **M1L** = lift strand between sts from front to back and knit this strand through the back loop · **M1R** = lift strand between sts from the back and knit this strand through the front loop · **patt** = pattern · **pm** = place marker · **p** = purl
pwise = as if to purl · **rem** = remain(ing) · **rep** = repeat(s) · **rev St st** = reverse stockinette stitch · **rnd(s)** = round(s) · **RS** = right side · **sc** = single crochet · **skp** = slip 1 stitch as if to knit, knit 1 stitch, pass slipped stitch over knitted stitch · **sk2p** = slip 1 stitch as if to knit, knit 2 together, pass slipped stitch over knitted stitch · **s2kp** = slip 2 stitches as if to knit, k 1 stitch, pass slipped stitches over knitted stitch · **sl** = slip · **st(s)** = stitch(es) · **St st** = stockinette stitch · **tbl** = through the back loop · **tog** = together · **wyib** = with yarn in back of work · **wyif** = with yarn in front of work · **WS** = wrong side · **yo(s)** = yarn over(s)

Publisher's Info

Publisher: Lana Grossa GmbH, Gaimersheim, www.lana-grossa.com

Photographer: Nicolas Olonetzky, www.olonetzky.com