

LANA GROSSA



© Lana Grossa GmbH

Design 3 – Classici 23

**CARDIGAN
COOL WOOL**

CARDIGAN · COOL WOOL

Design 3 – Classici 23



Size 36/38 (40/42, 44)

Instructions are given for first size. Figures in parenthesis refer to larger sizes. When only one figure is given, it applies to all sizes.

Materials: 800 (850, 900) g of Lana Grossa **Cool Wool** (100% superfine Merino wool; 160 m/50 g) in Caramel (**col 2054**). Size 3.5 and 4 mm needles; size 3.5 mm circular needle, 80 cm long; three 20 mm snap buttons in silver [by UNION KNOPF, item 453732, col 40].

Rib patt: K1, p1.

St st: K on RS, p on WS.

Half-brioche rib: Work according to chart. Multiple of 2 + 1. Numbers at right edge of chart indicate RS rows, number at left edge of chart indicates WS row. Work rows 1 – 3 once, then rep rows 2 and 3. **Note:** 1 stitch and 1 yo are treated as 1 stitch.

Selvage sts: On every row: Knit first and last st.

Two-stitch selvage: On RS row, sl 1 pwise wyib, k1, patt to last 2 sts, k1, sl 1 pwise wyib. On WS row, p1, sl 1 pwise wyif, patt to last 2 sts, sl 1 pwise wyif, p1.

Full-fashion decrease: At beg of RS row, selvage st, p1, k2tog; at end of RS row, work to last 4 sts, skp, p1, selvage st.

Full-fashion increase: On RS row: M1, 1 st in from each edge. Work increased sts into patt.

Gauges: 21 sts and 46 rows = 10 x 10 cm in half-brioche rib on size 4 mm needles; 22 sts and 30 rows = 10 x 10 cm in St st on size 3.5 mm needles.

Back: With size 3.5 mm needles cast on 121 (129, 137) sts. Next row (WS): Selvage st, * k1, p1; rep from * to last 2 sts, k1, selvage st. Work in rib patt as set by last row until piece meas 7 cm from cast-on, ending with a WS row. Change to size 4 mm needles. Maintaining selvage sts, work in half-brioche rib according to chart until piece meas 30 cm from cast-on. Place marker in first and last st on last WS row to indicate beg of armholes. Cont in patt until piece meas 25 (26, 27) cm from armhole markers, ending with a WS row. Shape shoulders: At each shoulder edge bind off 2 sts 19 (15, 11) times, 3 sts 1 (5, 9) time(s). Bind off rem 39 sts.

Left front: With size 3.5 mm needles cast on 57 (61, 65) sts. Work same as back to armhole. Place armhole marker at right edge. Cont in patt until piece meas 34 (35, 36) cm from cast-on, ending with a WS row. Shape neck: Working full-fashion dec, dec 1 st at end of next RS row, then every 8th row 15 times and when same length as back to shoulder, shape shoulder at right edge same as for back. No sts rem.

Right front: Work same as left front, reversing all shaping.

Sleeves: With size 3.5 mm needles cast on 49 sts. Work in rib patt same as for back until piece meas 7 cm from cast-on, ending with a WS row. Change to size 4 mm needles. Next row (RS): Selvage st; work row 1 of chart, end selvage st and at same time, increase 4 sts as foll: M1R&M1L after a purl st 2 times evenly across row = 53 sts. Cont in patt and shape sleeve as foll: Working full-fashion inc, inc 1 st at each end of 9 (7, 7)th from end of rib patt, then every 8th row 3 times, then every 6th row 23 times (then every 6th row 27 times, then every 4th row 1 time / then every 6th row 23 times, then every 4th row 7 times) = 107 (111, 115) sts. Work increased sts into patt. Work even until piece meas 45 cm from cast-on. Bind off all sts.

Pockets: Make 2. With size 4 mm needles cast on 33 sts. Working a two-stitch selvage at each edge work in half-brioche rib according to chart until piece meas 17 cm from cast-on. Bind off all sts.

Pocket flap: Make 2. With size 4 mm needles cast on 33 sts. Working a two-stitch selvage at each edge work in half-brioche rib according to chart until piece meas 8 cm from cast-on. Bind off all sts.

Finishing: Pin pieces to measurements and block. Sew shoulder seams. **Front and neckband:** With size 3.5 mm circular needle, pick up and k 75 (77, 79) sts along straight edge and 65 sts along shaped edge of right front, 39 sts along back neck, 65 sts along shaped edge and 75 (77, 79) sts along straight edge of left front = 319 (323, 327) sts. Work in St st for 5 cm, ending with a RS row. Next WS (turning ridge) row: Knit. Cont in St st for 5 cm. Bind off all sts. Fold band to WS at turning ridge and sew down. Referring to schematic for placement, sew pockets and pocket flaps to fronts. Sew on sleeves between markers. Sew side and sleeve seams. Sew snap buttons to front band, centered on band and with bottom snap 4 cm up from cast-on edge and rem 2 snaps spaced 15 (15.5, 16) cm apart. **Note:** Work all seams 1 st in from each edge.

CARDIGAN · COOL WOOL

Design 3 – Classici 23

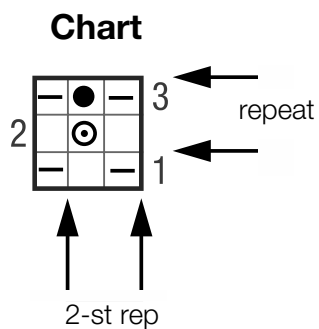
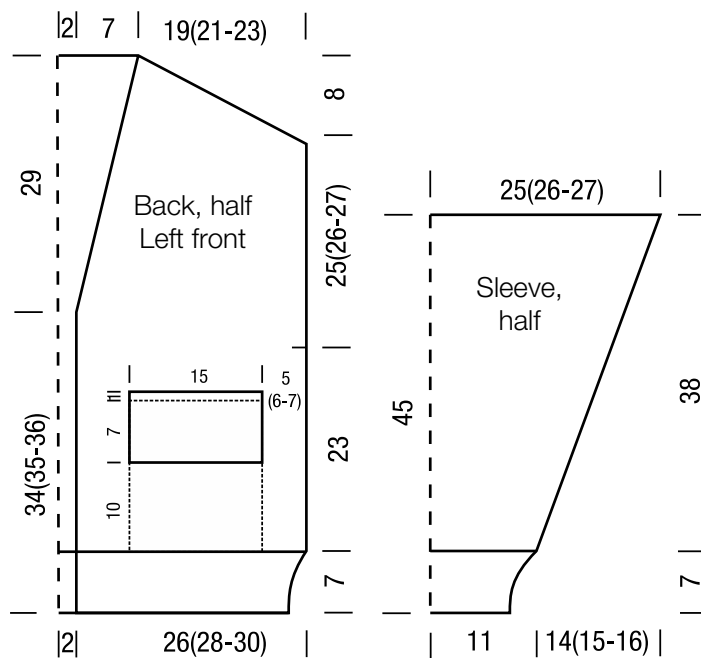


Chart key:

- = k1
- = p1
- = make a yo, then sl next st pwise
- = ktog slipped st with its yo



Gauge Swatch

Before you begin ...

...make a gauge swatch. Use the recommended needles, yarns and pattern stitch for your gauge swatch. It should measure approx. 12 cm x 12 cm. Cast-on and bind-off rows, as well as selvage stitches should not be included in the measurement. Pin your swatch and block it as you would the finished pieces of the garment. Count stitches and rows over 10 cm. If your gauge swatch is too small, switch to larger needles. If your gauge swatch is too big, switch to smaller needles.



Abbreviations

beg = begin(ning) · **ch** = chain · **cont** = continue · **dec** = decompas(e)(ing) · **inc** = increas(e)(ing) · **k** = knit · **kwise** = as if to knit
meas = measures · **M1L** = lift strand between sts from front to back and knit this strand through the back loop · **M1R** = lift strand between sts from the back and knit this strand through the front loop · **patt** = pattern · **pm** = place marker · **p** = purl
pwise = as if to purl · **rem** = remain(ing) · **rep** = repeat(s) · **rev St st** = reverse stockinette stitch · **rnd(s)** = round(s) · **RS** = right side · **sc** = single crochet · **skp** = slip 1 stitch as if to knit, knit 1 stitch, pass slipped stitch over knitted stitch · **sk2p** = slip 1 stitch as if to knit, knit 2 together, pass slipped stitch over knitted stitch · **s2kp** = slip 2 stitches as if to knit, k 1 stitch, pass slipped stitches over knitted stitch · **sl** = slip · **st(s)** = stitch(es) · **St st** = stockinette stitch · **tbl** = through the back loop · **tog** = together · **wyib** = with yarn in back of work · **wyif** = with yarn in front of work · **WS** = wrong side · **yo(s)** = yarn over(s)

Publisher's Info

Publisher: Lana Grossa GmbH, Gaimersheim, www.lana-grossa.com

Photographer: Yannick Schütte