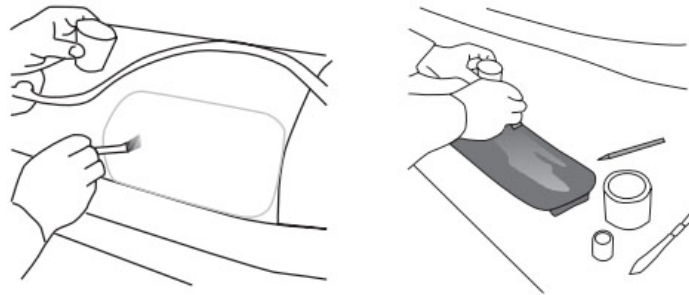


Instructions For Replacing Oarlock Pads on Inflatable Boats

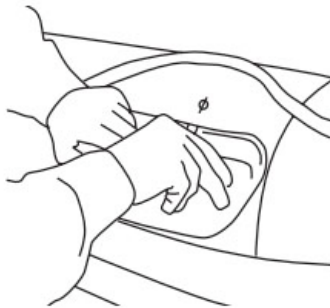
The inflatable boat and Oarlock pads must be wiped down with the proper cleaner prior to gluing the oarlock pads. Newport Vessels uses Polyurethane M.E.K. glue and we recommend that an Acetone cleaner should be used for the cleaning process of the oarlock pad and the boat (location where the pad will be glued).



Once the pads and boat are cleaned, you can begin the gluing process. Using the M.E.K. glue, apply to both the oarlock pad and the area of the boat where the oarlock needs to be placed. A paint brush is a good tool to make sure the glue is evenly spread about.



Let the glue set until the surface is no longer tacky to the touch (approximately 10-15 mins). Next spread a 2nd thin layer of glue to both the oarlock pad and boat and let it set again until tacky. We recommend then using a hair dryer to warm the surface of the pad and boat. Once warm (not hot) to touch stick the pad to the boat.



Attach the oarlock to the inflatable boat and make sure that no air bubbles are left between the pad and the boat. After the pad is set in place and all the air bubbles are out from under the oarlock, let it sit for 48 hours. Do not touch until the glue has properly set.