



Dawning

SEASONLESS'22

LOOKBOOK



About Lafaani

Lafaani has its roots in Urdu and literally translates to 'Immortality'.

Immortality truly conveys the essence of the brand - to curate merchandise that lives for many moons and isn't ephemeral. By means of creating and using this handcrafted product, we are immortalizing the labour and toil of all the artisans who breathed life into it.

We reckon that sustainability is not a lifestyle choice and hence, incorporate sustainability in our production, consumption, and even post consumption processes in an earnest sense.

Our fashion choices reflect our times, what we buy and wear communicates our thoughts, values and beliefs. At Lafaani, we aspire to accentuate your convictions through our creations.

Our curation is an ode to those on the pursuit of sustainability and finding that delicate balance between saving the world and savouring it.



Concept Note

Wandering minds. Swerving souls. Chasing surreal dreams. Always so hurried, always yearning. Seldom heeding the radiant light of day that falls upon us.

Unbothered by what comes in its way, the beams pass through the branches, the leaves, reflecting from the water, finding its way to hit the ground, dawning on the surface, brightens and creates a beautiful interplay of warm hues and tones filling our blank canvas with colour.

The rays lay on us like a blanket, infusing us with a sense of warmth, a sense of calm, enveloping us in its comfort. They foster hope. The hope for indulging in something new, the hope that the world is full of opportunities waiting for us. Dawning is our attempt to bring this essence to life.

This collection features tailored Kora-coloured garments following a free and intuitive approach to embroidery. Simple yet elegant Kantha stitches depict the warm shades of brown to adorn these undyed and unbleached fabrics to create nostalgic yet timeless silhouettes.



Design Note

A collection based on the narrative that with each dawn come new opportunities. Keeping our focus on seeking hope with the rays of light that shine upon us, we have consciously chosen a warm colour palette to translate the light of nature and its meaning to us.

Dawning is a collection that is both old-school and chic. It is designed mindfully to flatter all body types and comes with elements of multi-functionality to ensure that the wearer is involved in the process of choice and interchangeability.

The timeless and trans-seasonal designs in a neutral colour palette, are only enhanced with the exquisite craftsmanship of the hand-woven fabrics that have been used in the collection.

A mix of classic and contemporary silhouettes, intricate hand embroidery and finishing combine to offer the perfect balance of old-world design with a twist of freshness.



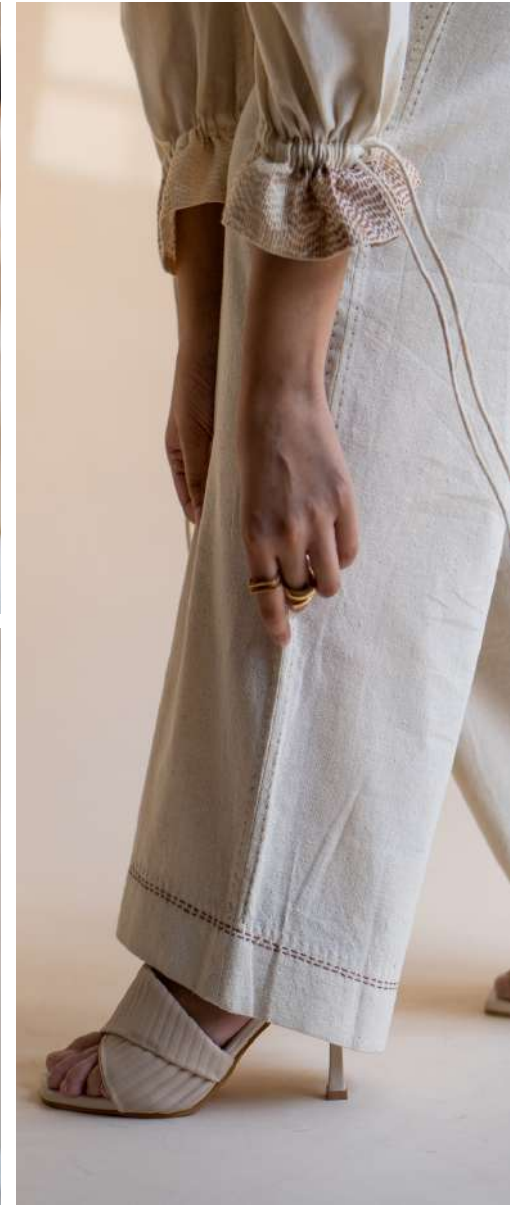
CONTENTS

Womenswear

- 01 REVERSIBLE TOP
STRAIGHT PANTS
- 02 BELT SHIRT
- 03 DRAPED SHIRT
- 04 HIGH SLIT TUNIC
- 05 RAGLAN SLEEVE BLOUSE
- 06 ASYMMETRICAL TOP
- 08 PLEATED CROP SHIRT
- 09 PEPLUM BLOUSE
FLAYERED SKIRT
- 10 DENIM DRESS
- 11 TRENCH DRESS WITH
CROPPED JACKET
- 12 A-LINE DRESS
- 13 BUTTON DOWN DRESS
- 15 LONG SHIRT
- 16 ANGARAKHA SHIRT DRESS
- 17 CROP JACKET
PATCH POCKET PANTS
- 18 TIE-UP DRESS
- 19 SLIT PANTS
- 20 DENIM SHORTS
- 22 FLAP- OVER SHORTS
- 23 PANELLED SKIRT
- 24 SIMPLE SHIRT
- 25 UNISEX DOUBLE-BREASTED JACKET

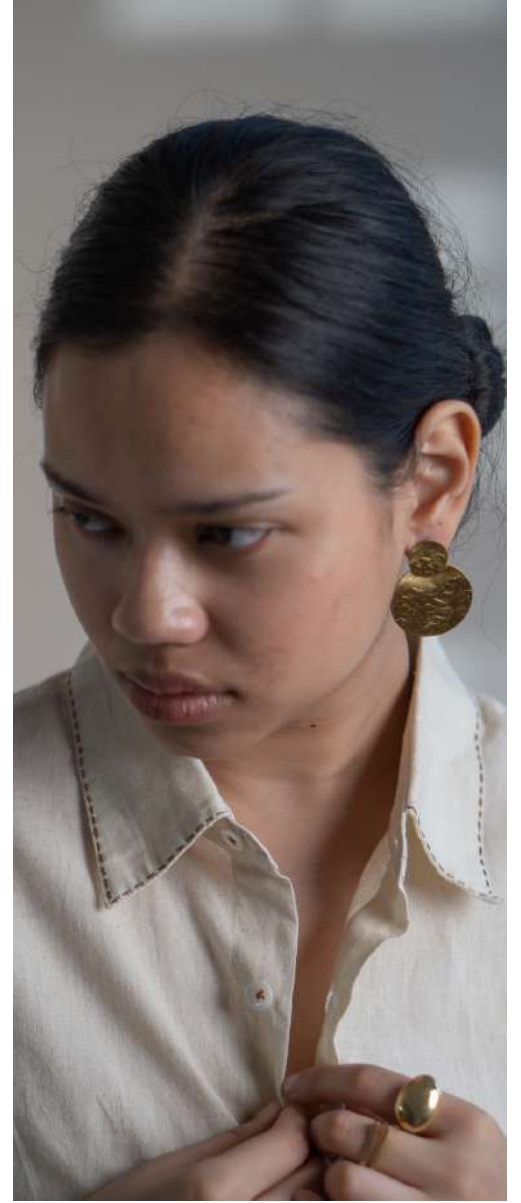
Menswear

- 26 PATCH POCKET SHIRT
PLEATED PANTS
- 27 EXTENDED PLACKET SHIRT
- 29 FLAP DETAIL SHIRT
- 30 HALF SLEEVE SHIRT
- 31 PANELLED LONG SHIRT
- 32 ANGRAKHA LONG SHIRT
- 33 SHOULDER PLACKET SHIRT
- 34 SHIRT JACKET
TAPERED PANTS
- 36 LAYERED SHIRT
- 37 OVERLAP FLACKET SHIRT
- 38 FLAP SHIRT
- 39 HAORI JACKET
- 40 UNISEX PLEATED BLAZER
- 41 DENIM JACKET
UTILITY PANTS
- 43 UNISEX VEST
- 44 UNISEX OVERLAY
- 45 TRENCH OVERLAY
- 46 UNISEX BUTTON- DOWN OVERLAY
- 47 WIDE-LEG PANTS
- 48 STRAIGHT- FIT SHORTS

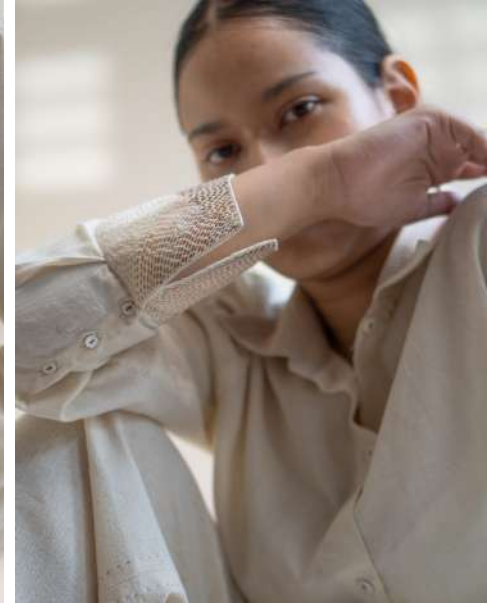


| REVERSIBLE TOP
| L/WT/T03

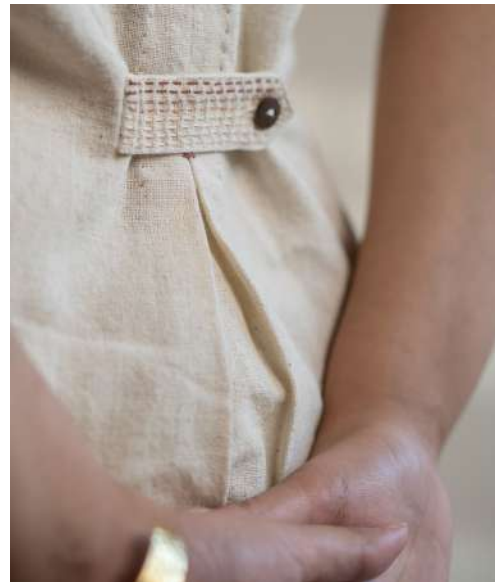
STRAIGHT PANTS |
L/WP/P03 |



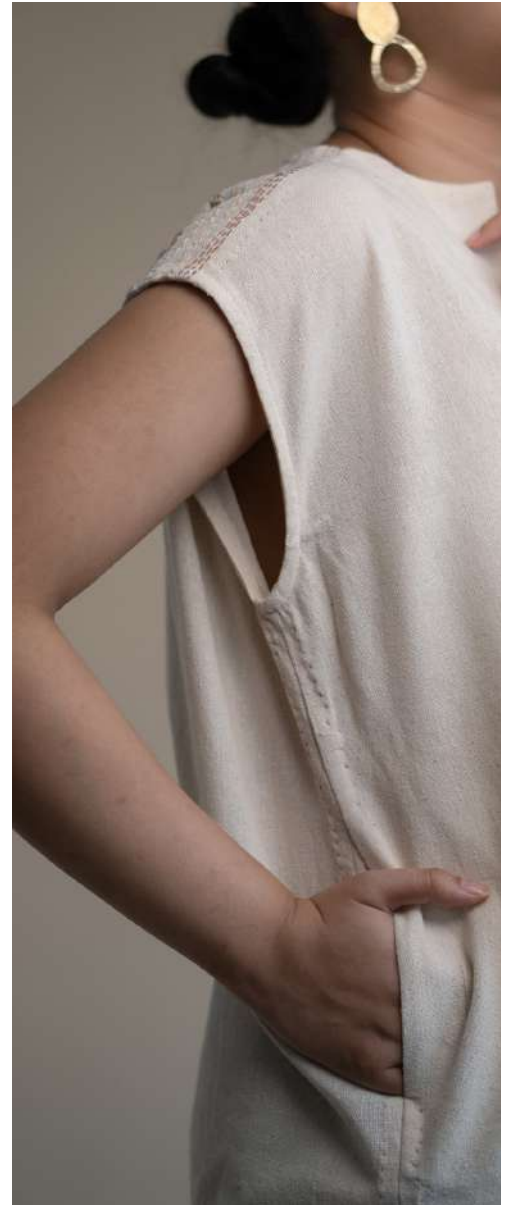
| BELT SHIRT
| L/WS/S04



| DRAPED SHIRT
| L/WS/S05



| HIGH SLIT TUNIC
| L/WT/T04



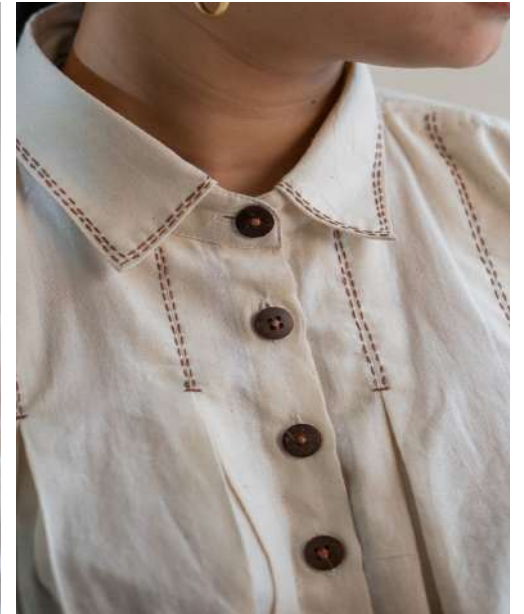
| RAGLAN SLEEVE BLOUSE
| L/WT/T05



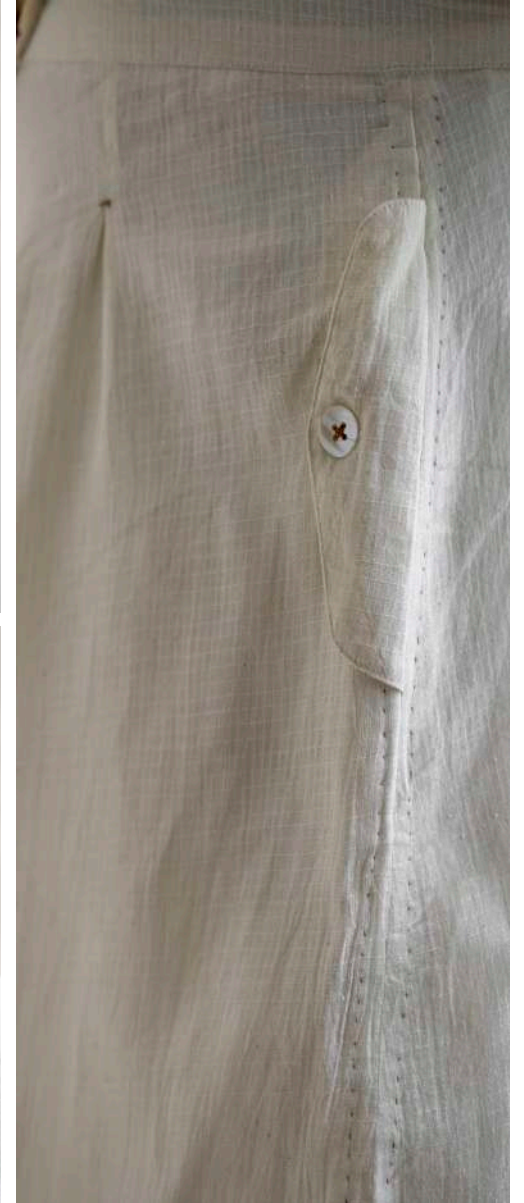
| ASYMMETRICAL TOP
| L/WT/T06

DAWNING | SEASONLESS'22





| PLEATED CROP SHIRT
| L/WS/S06



| PEPLUM BLOUSE
| L/WT/T07

FLAYERED SKIRT |
L/WSK/SK02 |

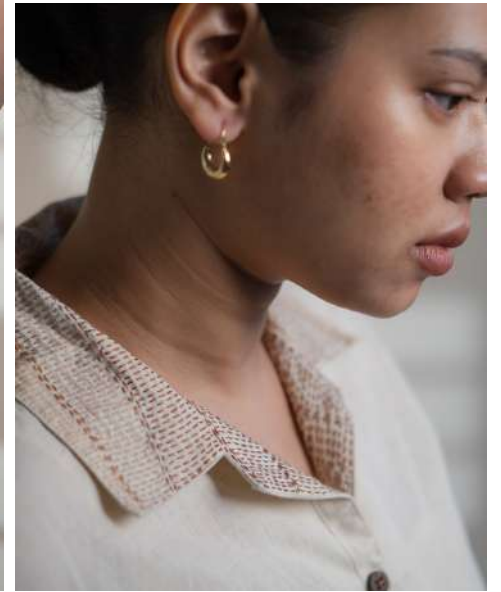
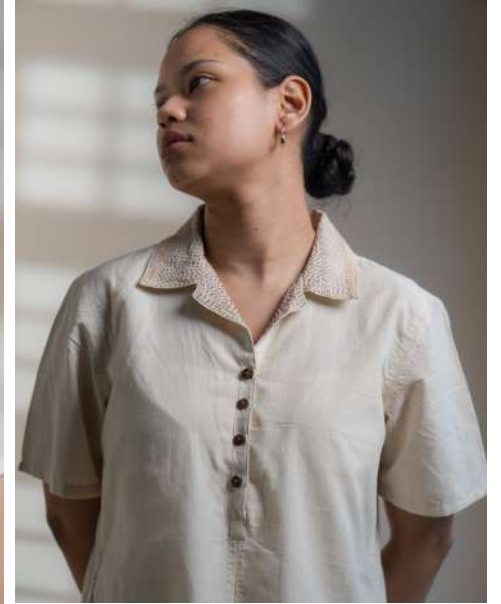


| DENIM DRESS
| L/WS/S07

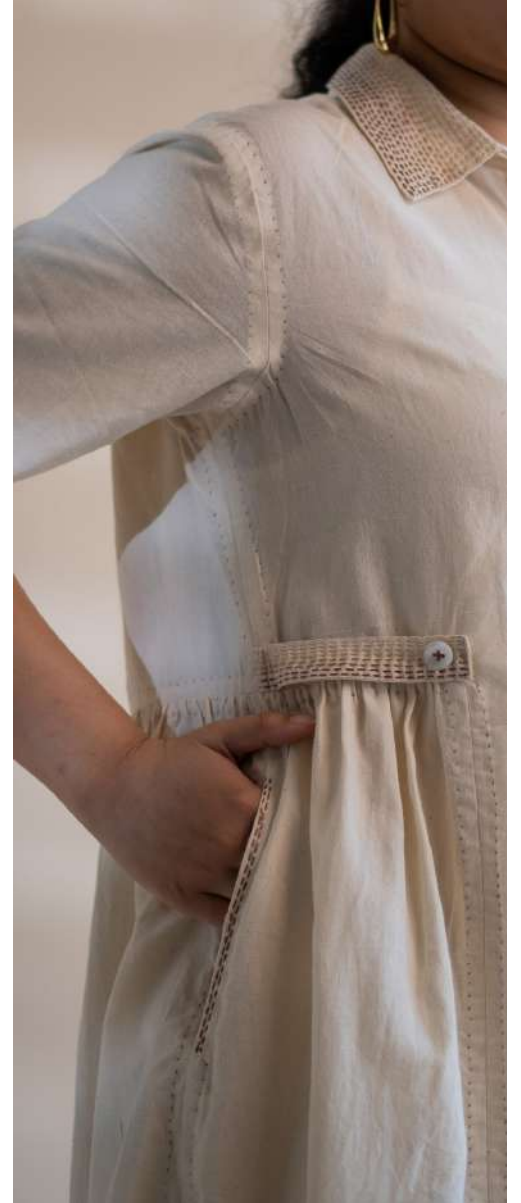


| TRENCH DRESS WITH
CROPPED JACKET
| L/WJ/J05

TRENCH DRESS |
L/WD/D03 |



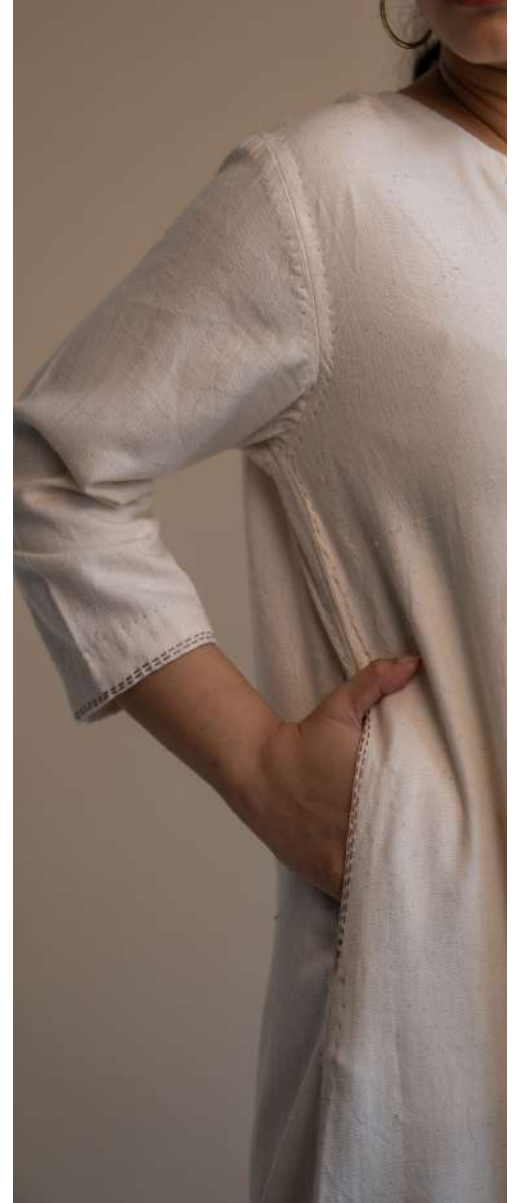
| A-LINE DRESS
| L/WD/D04



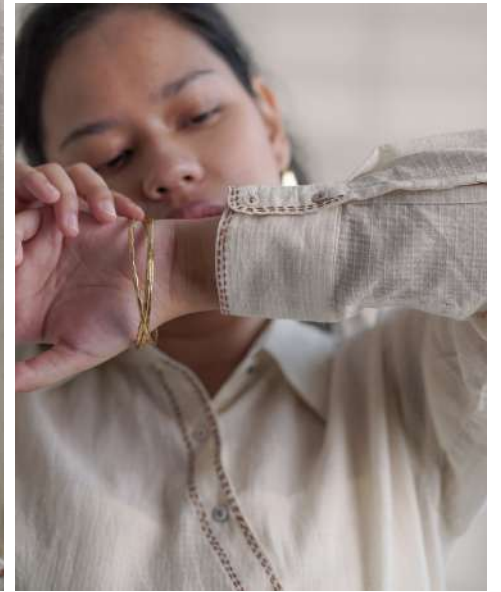
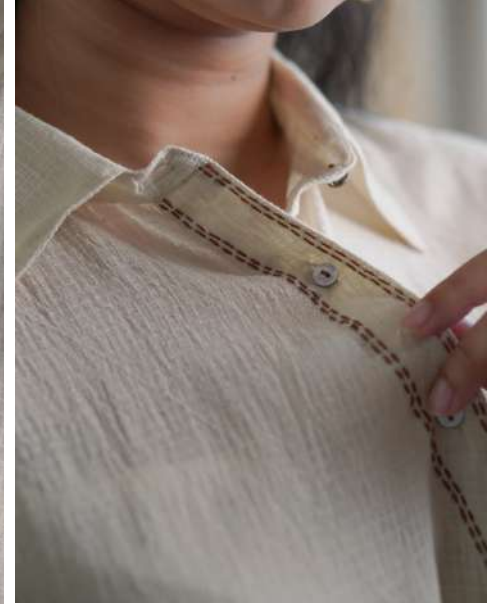
| BUTTON DOWN DRESS
| L/WD/D05

DAWNING | SEASONLESS'22





| LONG SHIRT
| L/WS/S02

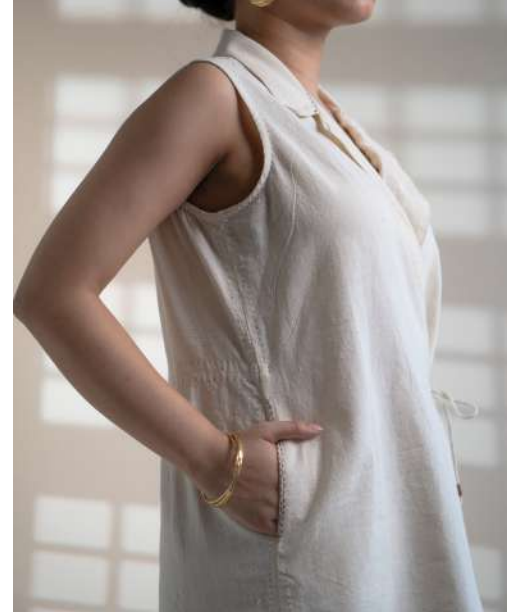


| ANGARAKHA SHIRT DRESS
| L/WD/D06



| CROP JACKET
| L/WJ/J04

PATCH POCKET PANTS |
L/WP/P04 |



| TIE-UP DRESS
| L/MS/S09



| SLIT PANTS
| L/WP/P04



| DENIM SHORTS
| L/MS/S09

DAWNING | SEASONLESS'22





| FLAP OVER SHORTS
| L/WSH/SH02



| PANELLED SKIRT
| L/WSK/SK03



| SIMPLE SHIRT
| L/WS/S07



| UNISEX DOUBLE-BREASTED JACKET
| L/UJ/J02

DAWNING | SEASONLESS'22





| PATCH POCKET SHIRT
| L/MS/S06

PLEATED PANTS |
L/MP/P05 |



| EXTENDED PLACKET SHIRT
| L/MS/S07

DAWNING SEASONLESS'22





| FLAP DETAIL SHIRT
| L/MS/S08



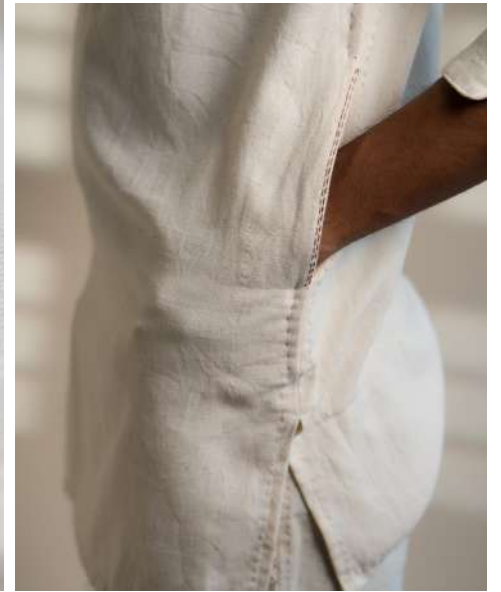
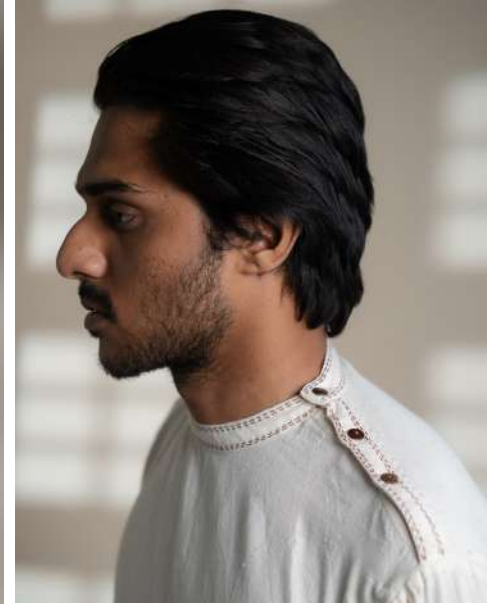
| HALF SLEEVE SHIRT
| L/MS/S09



| PANELLED LONG SHIRT
| L/MS/S10



| ANGRAKHA LONG SHIRT
| L/MS/S11



| SHOULDER PLACKET SHIRT
| L/MS/S12

DAWNING | SEASONLESS'22





| SHIRT JACKET
| L/MS/S13

TAPERED PANTS |
L/MP/PO4 |



| LAYERED SHIRT
| L/MS/S14



| OVERLAP FLACKET SHIRT
| L/MS/S15



| FLAP SHIRT
| L/MS/S04



| HAORI JACKET
| L/MJ/J04



| UNISEX PLEATED BLAZER
| L/UJ/J01



| DENIM JACKET
| L/MJ/J05

UTILITY PANTS |
L/MP/P06 |

DAWNING | SEASONLESS'22





| UNISEX VEST
| L/UJ/J02



| UNISEX OVERLAY
| L/UJ/J04



| TRENCH OVERLAY
| L/MJ/J05



| UNISEX BUTTON DOWN OVERLAY
| L/UJ/J05





| WIDE-LEG PANTS
| L/MP/P01




| STRAIGHT FIT SHORTS
| L/MP/P02



 thelafaanistudio

 thelafaanistudio

 lafaanistudio

 www.lafaani.com

