



# 2024 CUSTOM CATALOG

**ROSTI**

# INDEX

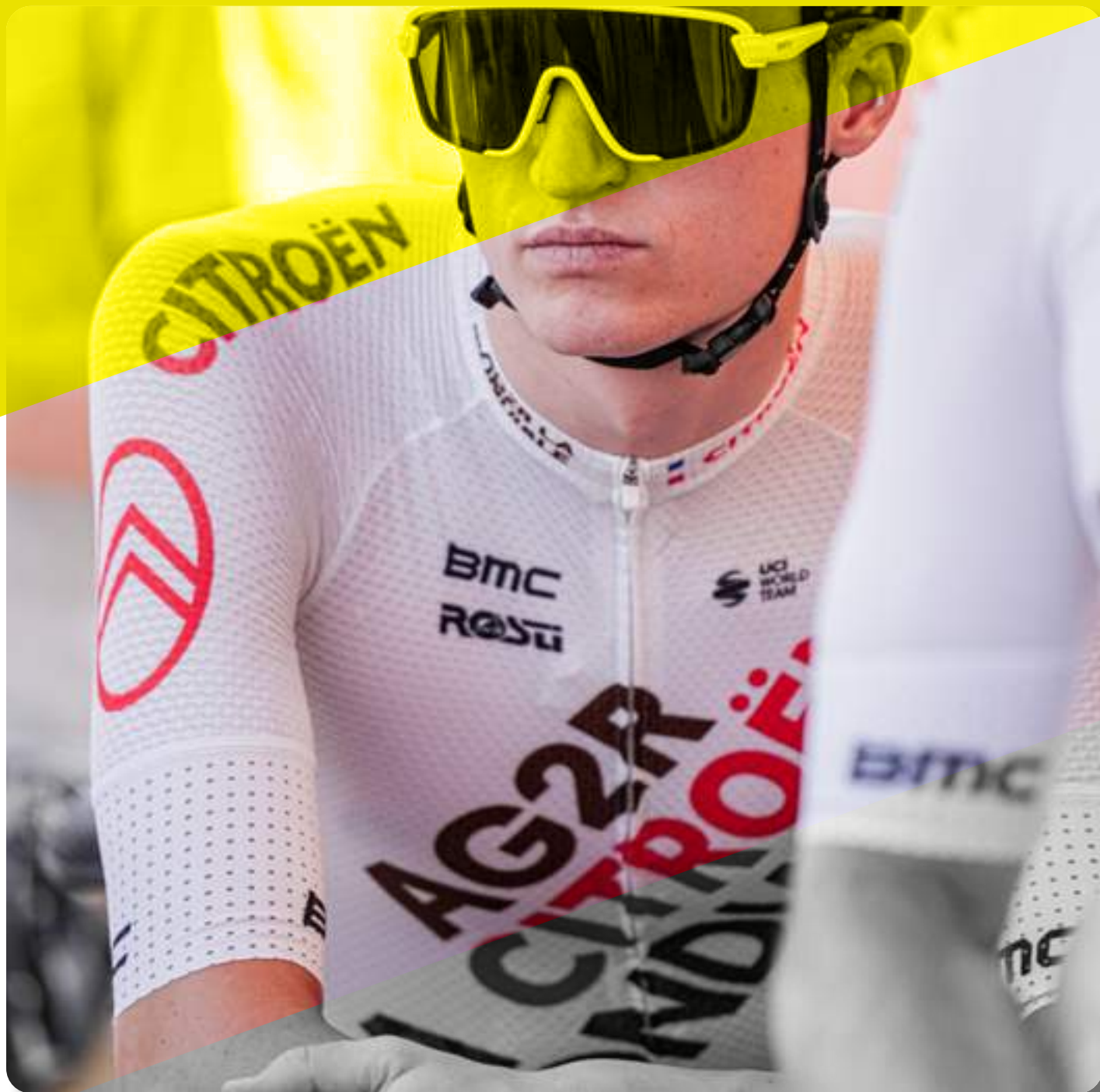
- 3 - SUMMER JERSEY
- 9 - SUMMER BIBSHORTS
- 13 - CILET
- 17 - MID-SEASON JERSEY
- 24 - WIND RAIN COLD
- 32 - THIGHTS
- 35 - GRAVEL
- 39 - OFF ROAD
- 44 - BODY
- 50 - TRIATHLON
- 56 - KIDS
- 62 - ACCESSORIES
- 73 - SIZE CHARTS



# 1

## SUMMER JERSEYS

- 4 - PHENOMENA
- 5 - VELOCE
- 6 - STILE
- 7 - CORSA
- 8 - UNICA



# PHENOMENA

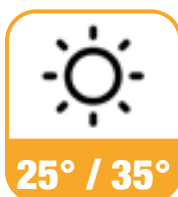
## Absolute expression

From Rosti's research and development centre comes the new PHENOMENA jersey in a blend of fabrics and an innovative fit without side seams, that allows full personalisation of the jersey without graphic constraints. Comfy, breathable and light, with close-fitting, clean cut Bodyfit sleeves. Full-length concealed zipper with neutral cam lock slider, 3 back pockets and reflective piping.

COD. **PMCPHEU**

### Physical properties of the fabric

Water repellency	1				
Breathability	1	2	3	4	5
Windproof	1	2			
Lightness	1	2	3	4	5
UV protection	1	2			



Our garments run on the smaller side so if you are right on the border or between sizes, please order at least one size up. Each model was designed to fit differently to take advantage of the inherent characteristics of the materials used. Your size may also vary according to your personal preferences.



**fabric:**  
Native Sanremo®

**fabric:**  
Stradebianche®

**fabric:**  
Pirata®

**fabric:**  
Bicimania®

# VELOCE

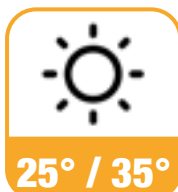
## Elegance and performance

Veloce is our Teams' favourite jersey. Lightweight, high-performance, in a blend of 3 breathable fabrics and close-fit Giro cut. Stretch Bodyfit sleeves, full-length concealed zipper with neutral cam lock slider, reflective piping on the 3 back pockets, 25 mm silicone gripper around the waist at the back and 10 mm silicone gripper around the waist at the front.

COD. **PMCVELU**

### Physical properties of the fabric

Water repellency	1				
Breathability	1	2	3	4	5
Windproof	1				
Lightness	1	2	3	4	
UV protection	1	2			



Our garments run on the smaller side so if you are right on the border or between sizes, please order at least one size up. Each model was designed to fit differently to take advantage of the inherent characteristics of the materials used. Your size may also vary according to your personal preferences.



**fabric:**  
Native Sanremo®



**fabric:**  
Pirata®



**fabric:**  
Bicimania®

# STILE

## Perfect balance

Stile is the jersey with a perfect balance between quality and performance. Comfy, hard-wearing in a blend of 3 extremely breathable and lightweight fabrics, close-fit Raglan cut. Stretch Bodyfit sleeves, full-length concealed zipper with neutral cam lock slider, reflective piping on the 3 back pockets, 25 mm silicone gripper around the waist at the back and 10 mm silicone gripper around the waist at the front.

COD. **PMCSTIU**

### Physical properties of the fabric

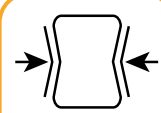
Water repellency	1				
Breathability	1	2	3	4	5
Windproof	1				
Lightness	1	2	3	4	
UV protection	1	2	3	4	



25° / 35°



100 gr.



SLIM FIT

Our garments run on the smaller side so if you are right on the border or between sizes, please order at least one size up. Each model was designed to fit differently to take advantage of the inherent characteristics of the materials used. Your size may also vary according to your personal preferences.



**fabric:**  
Native Sanremo®



**fabric:**  
Pirata®



**fabric:**  
Bicimania®

# CORSA

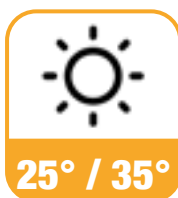
## Performance and affordability

Corsa is the jersey with the best cost-performance ratio. The Raglan cut in a lightweight, breathable fabric lends this garment a loose fit. Sleeves with flat twin-needle hem, full-length concealed zip with neutral cam lock slider, 3 back pockets with flat hem and 25 mm silicone gripper around the waist.

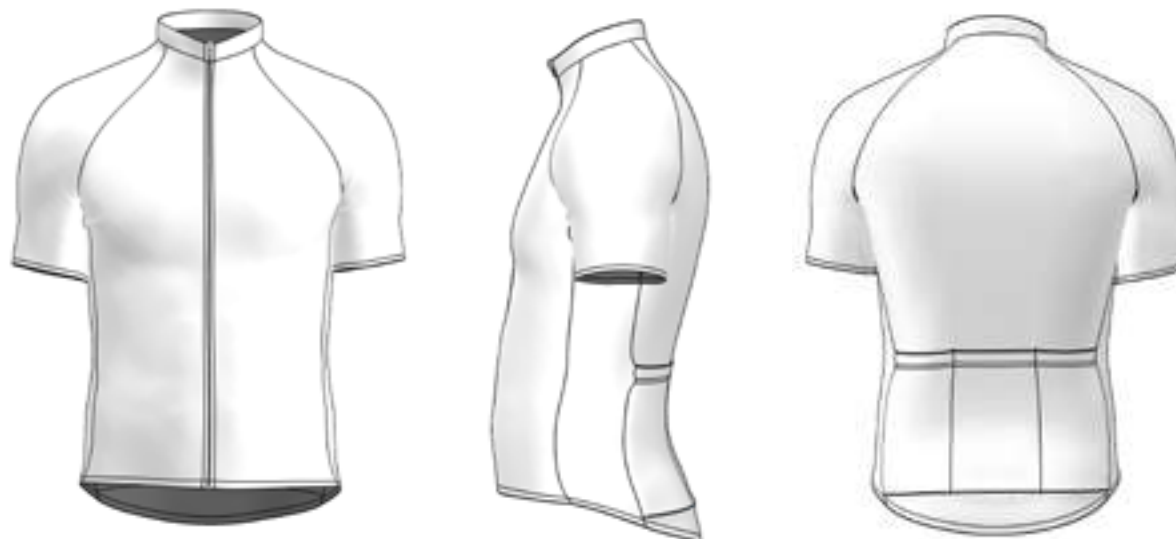
COD. **PMCCORU**

### Physical properties of the fabric

Water repellency	1				
Breathability	1	2	3	4	5
Windproof	1				
Lightness	1	2	3	4	5
UV protection	1	2			



Our garments run on the smaller side so if you are right on the border or between sizes, please order at least one size up. Each model was designed to fit differently to take advantage of the inherent characteristics of the materials used. Your size may also vary according to your personal preferences.



 fabric:  
Half Moon®

# UNICA

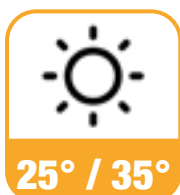
## No fear of the heat

Unica is the sleeveless summer jersey. In 2 extremely lightweight and breathable fabrics that guarantee maximum comfort on hot days. Full-length concealed zipper with cam lock slider. Collar and bodice with 10 mm edging and 3 pockets with reflective strip on the back. 30 mm silicone gripper around the waist.

COD. PSMUNIU

### Physical properties of the fabric

Water repellency	1				
Breathability	1	2	3	4	5
Windproof	1				
Lightness	1	2	3	4	
UV protection	1	2	3		



Our garments run on the smaller side so if you are right on the border or between sizes, please order at least one size up. Each model was designed to fit differently to take advantage of the inherent characteristics of the materials used. Your size may also vary according to your personal preferences.



 fabric:  
Native Sanremo®

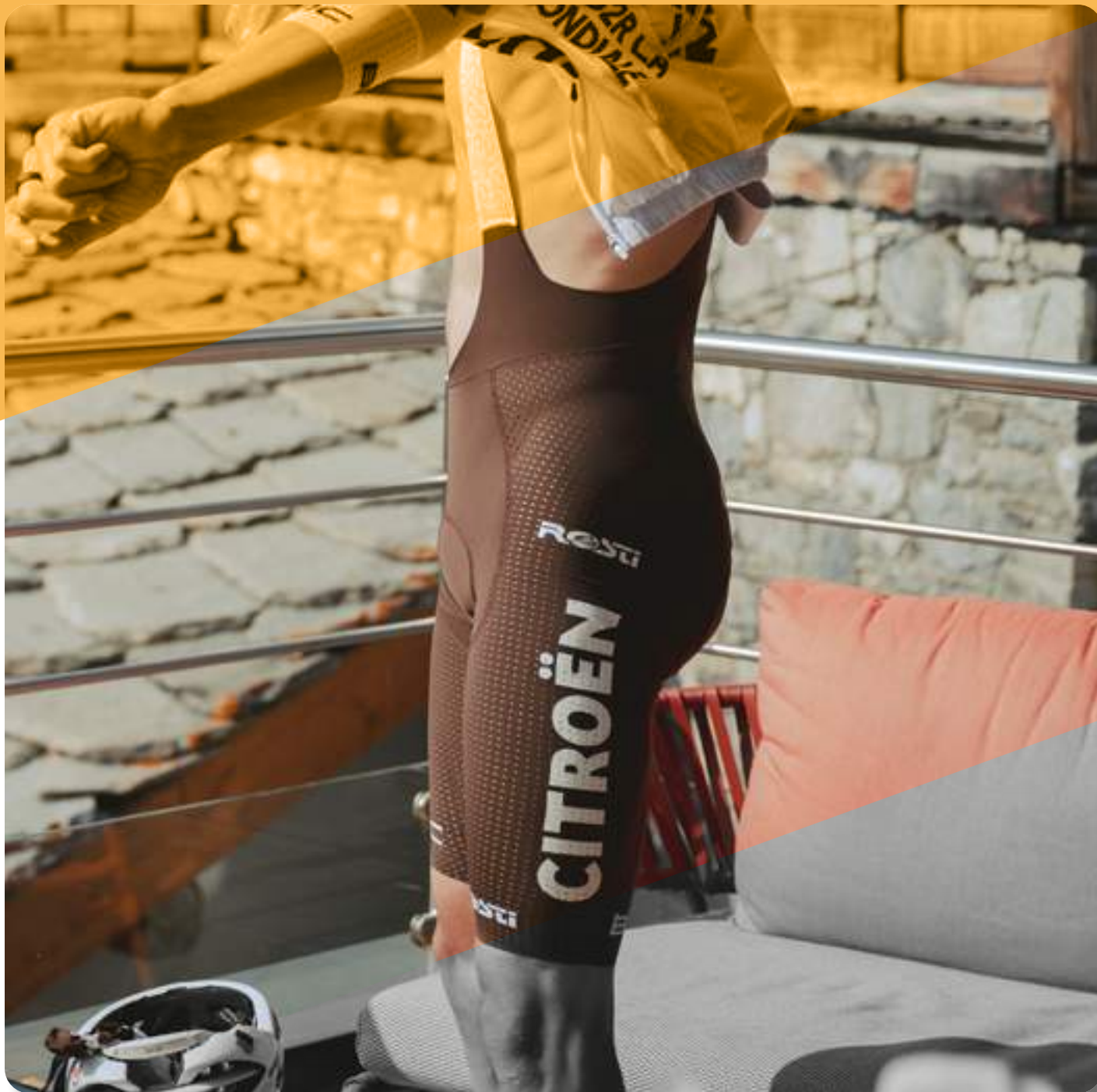
 fabric:  
Bicimania®



# 5

## SUMMER BIBSHORTS

- 10 - BOOST
- 11 - PRO1
- 12 - BOLT



# BOOST

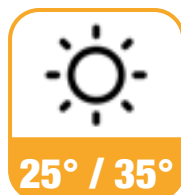
## The best, without compromising

Top-of-the-range, breathable, ultra-lightweight, totally ergonomic summer shorts in ultra-fine, multi-directional stretch fabric, extremely close-fitting, clean cut. Piece-dyed customisable only with thermoplastic print. Clean-cut, two-colour braces with 2 incorporated pockets. Pads of your choice.

COD. PCXBOSE

### Physical properties of the fabric

Water repellency	1				
Breathability	1	2	3	4	5
Windproof	1	2			
Lightness	1	2	3	4	5
UV protection	1	2	3	4	



Our garments run on the smaller side so if you are right on the border or between sizes, please order at least one size up. Each model was designed to fit differently to take advantage of the inherent characteristics of the materials used. Your size may also vary according to your personal preferences.



— fabric: Boost®

— fabric: Cobra®

— fabric: Mango®

— fabric: elastic

— fabric: Power Net®

# PRO 1

## Ergonomics and technology

Ergonomic summer shorts. Excellent cut and performance ensure a perfect fit. In high-density bonded fabric that reinforces the structure. Clean cut with inner silicone gripper around the thighs. Two-colour, clean-cut braces and 2 incorporated pockets. Pads of your choice.

COD. PCXPR1E  
STAMPATO

COD. PCXPT1E  
TINTO PEZZA

### Physical properties of the fabric

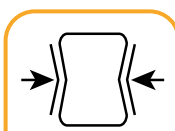
Water repellency	1	2			
Breathability	1	2	3		
Windproof	1	2			
Lightness	1	2	3		
UV protection	1	2	3	4	5



25° / 35°



210 gr.



SLIM FIT

Our garments run on the smaller side so if you are right on the border or between sizes, please order at least one size up. Each model was designed to fit differently to take advantage of the inherent characteristics of the materials used. Your size may also vary according to your personal preferences.



— fabric:  
Sportage®

— fabric:  
Thunderbike®

— fabric:  
Mango®

— fabric:  
Cobra®

— fabric:  
Power Net®

— fabric:  
elastic

# BOLT

## Hard-wearing and reliability

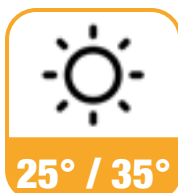
Hard-wearing, practical summer shorts in a high-density, breathable fabric with good resistance to pilling. Silicone gripper around the thighs. Mesh braces with fully edged hexagonal texture. Pads of your choice.

COD. PCXBOLE  
STAMPATO

COD. PCXBOTE  
TINTO PEZZA

### Physical properties of the fabric

Water repellency	1	2			
Breathability	1	2	3	4	
Windproof	1	2			
Lightness	1	2	3	4	
UV protection	1	2	3	4	5



Our garments run on the smaller side so if you are right on the border or between sizes, please order at least one size up. Each model was designed to fit differently to take advantage of the inherent characteristics of the materials used. Your size may also vary according to your personal preferences.



— fabric:  
Sportage®

— fabric:  
Thunderbike®

— fabric:  
Full Mesh®

— fabric:  
elastic

# FR CILET

- 14 - DRY
- 15 - LEVANTE
- 16 - RITMO



# DRY

## The Ad Hoc windproof jacket

Lightweight, breathable sleeveless jacket in windproof fabric on the front and breathable, mesh fabric on the back with the possibility of applying 3 back pockets. Full-length concealed zipper with neutral cam lock slider, 10 mm silicone gripper around the waist.

COD. **PJSDRTU**  
CON TASCHE

COD. **PJSDRYU**  
SENZA TASCHE

### Physical properties of the fabric

Water repellency	1	2	3	
Breathability	1	2	3	
Windproof	1	2	3	4
Lightness	1	2	3	
UV protection	1	2	3	4



Our garments run on the smaller side so if you are right on the border or between sizes, please order at least one size up. Each model was designed to fit differently to take advantage of the inherent characteristics of the materials used. Your size may also vary according to your personal preferences.



 fabric:  
Fox Light®

 fabric:  
Bicimania®

# LEVANTE

## Zonal insulation

Ultra-light, breathable sleeveless jacket in windproof fabric. Levante is windproof but guarantees breathability. Full-length concealed zipper with neutral cam lock slider, 10 mm silicone gripper around the waist.

COD. PJSLEVV

### Physical properties of the fabric

Water repellency	1				
Breathability	1	2	3	4	
Windproof	1	2	3	4	5
Lightness	1	2	3	4	
UV protection	1	2	3	4	



Our garments run on the smaller side so if you are right on the border or between sizes, please order at least one size up. Each model was designed to fit differently to take advantage of the inherent characteristics of the materials used. Your size may also vary according to your personal preferences.



 fabric:  
Klaus®

 fabric:  
Omega®

# RITMO

## The essential companion

Packable sleeveless windproof gilet with dynamic breathability for osmotic exchange. Collar with sweat-wicking microfibre edging and reversed windproof zipper. Besides improving the fit, the stretch side panels offer better ventilation. Hi-Viz reflective strips on the back, silicone gripper around the waist and side pocket with safety zipper. Customisable only with thermoplastic print.

COD. PJSRITU

### Physical properties of the fabric

Water repellency	1	2		
Breathability	1	2	3	
Windproof	1	2	3	4
Lightness	1	2	3	4
UV protection	1	2	3	4



Our garments run on the smaller side so if you are right on the border or between sizes, please order at least one size up. Each model was designed to fit differently to take advantage of the inherent characteristics of the materials used. Your size may also vary according to your personal preferences.



— fabric:  
antivento

— fabric:  
tessuto traspirante

customizable only  
with thermoplastic  
printing



# MID SEASON JERSEYS

- 18 - PHENOMENA ML
- 19 - VELOCE ML
- 20 - STILE ML
- 21 - CORSA ML
- 22 - FULLWIND
- 23 - ZEROWIND



# PHENOMENA ML

## Absolute expression

From Rosti's research and development centre comes the new PHENOMENA jersey in a blend of fabrics and with innovative fit without side seams, that allows full personalisation of the jersey without graphic constraints. Mid-season plush-lined long-sleeved jersey. 55 mm cuff, full-length concealed zipper with neutral cam lock slider, reflective piping on the 3 back pockets. 25 mm silicone gripper around the waist at the back.

COD. PMLPHEU

### Physical properties of the fabric

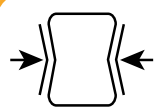
Water repellency	1					
Breathability	1	2	3			
Windproof	1	2				
Lightness	1	2				
UV protection	1	2	3	4	5	



10° / 16°

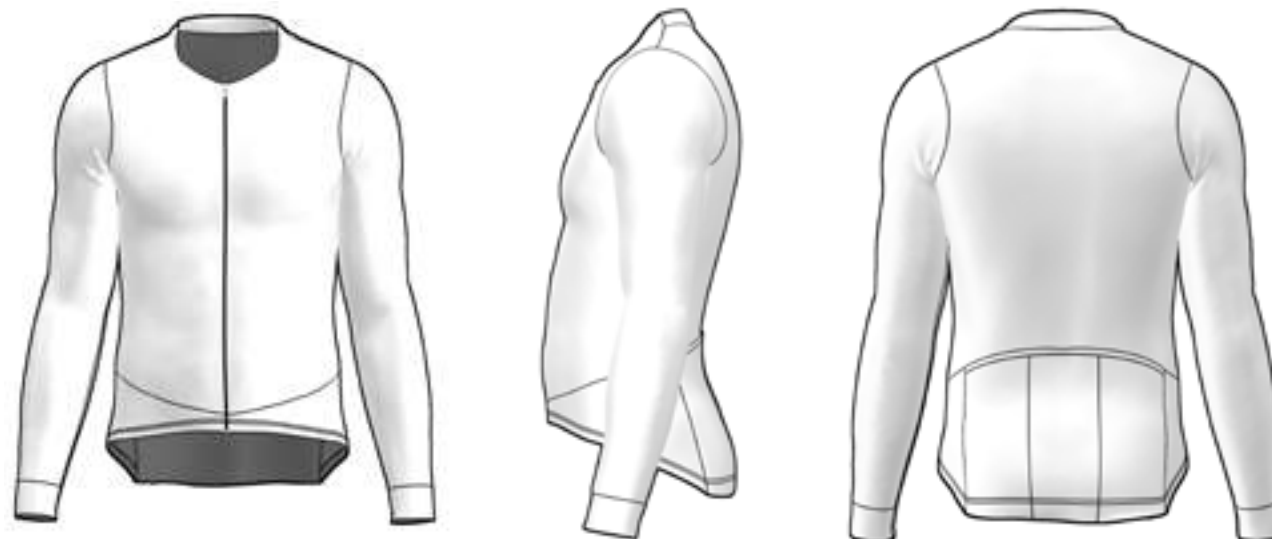


200 gr.



SLIM FIT

Our garments run on the smaller side so if you are right on the border or between sizes, please order at least one size up. Each model was designed to fit differently to take advantage of the inherent characteristics of the materials used. Your size may also vary according to your personal preferences.



— fabric:  
Instinct®

# VELOCE ML

## Thermal equilibrium

Mid-season plush-lined Giro cut long-sleeved jersey. Resists the cold and abrupt changes in temperature. 55 mm cuff, full-length concealed zipper with cam lock slider, reflective piping on the 3 back pockets. 25 mm silicone gripper around the waist at the back and 10 mm silicone gripper around the waist at the front.

COD. **PMCVELU**

### Physical properties of the fabric

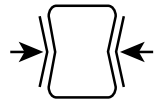
Water repellency	1				
Breathability	1	2	3	4	5
Windproof	1				
Lightness	1	2	3	4	
UV protection	1	2			



6° / 15°

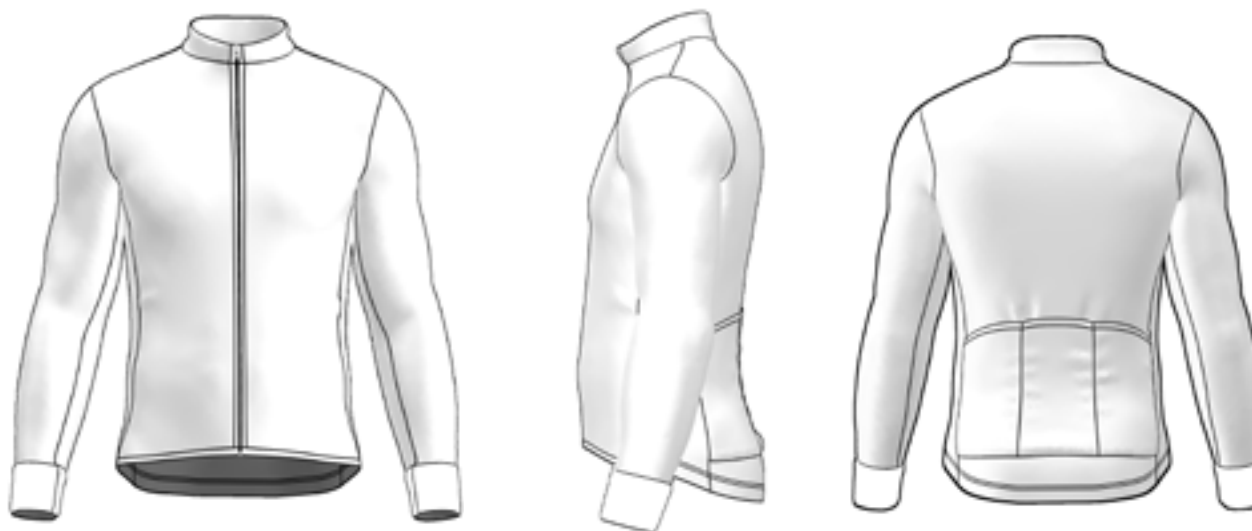


210 gr.



SLIM FIT

Our garments run on the smaller side so if you are right on the border or between sizes, please order at least one size up. Each model was designed to fit differently to take advantage of the inherent characteristics of the materials used. Your size may also vary according to your personal preferences.



**fabric:**  
New Brushed®

# STILE ML

## The comfort you expect

Mid-season plush-lined Tour cut long-sleeved jersey. Resists the cold and abrupt changes in temperature. 55 mm cuff, full-length concealed zipper with cam lock slider, reflective piping on the 3 back pockets. 25 mm silicone gripper around the waist at the back and 10 mm silicone gripper around the waist at the front.

COD. **PMCSTIU**

### Physical properties of the fabric

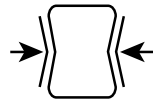
Water repellency	1				
Breathability	1	2	3	4	5
Windproof	1				
Lightness	1	2	3	4	
UV protection	1	2			



6° / 15°

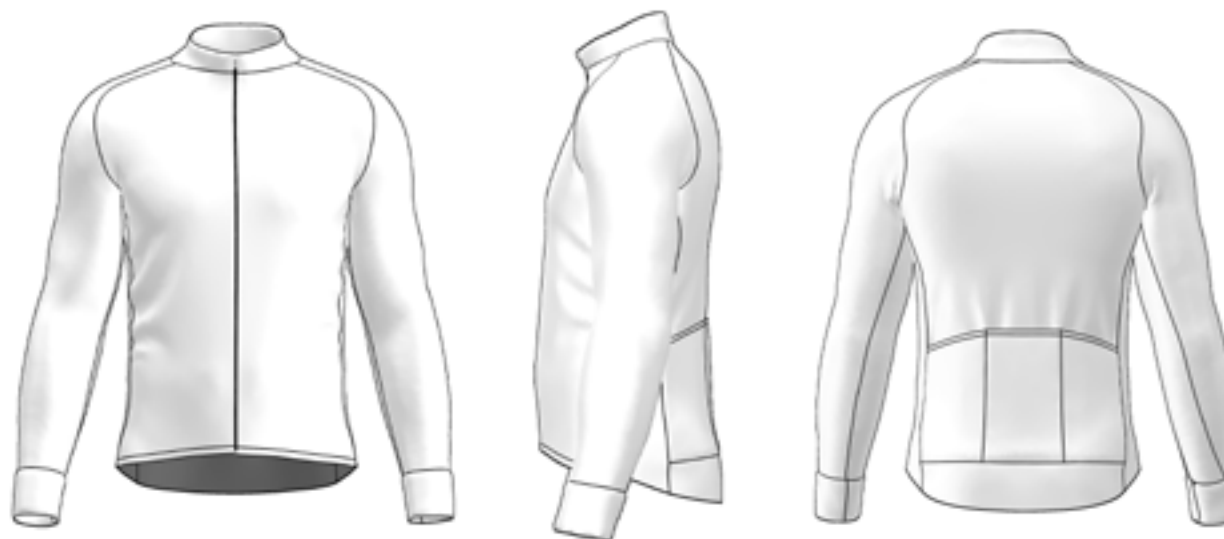


210 gr.



SLIM FIT

Our garments run on the smaller side so if you are right on the border or between sizes, please order at least one size up. Each model was designed to fit differently to take advantage of the inherent characteristics of the materials used. Your size may also vary according to your personal preferences.



**fabric:**  
New Brushed®

# CORSA ML

## The middle season

Long-sleeved Raglan cut jersey, ideal on cool, mid-season days. Lightweight, breathable, thermal brushed fabric with loose fit, 55 mm cuffs and full-length concealed zipper with cam lock slider, 3 back pockets and 30 mm silicone gripper around the waist.

COD. PMCCORU

### Physical properties of the fabric

Water repellency	1			
Breathability	1	2	3	4
Windproof	1	2		
Lightness	1	2	3	4
UV protection	1	2	3	4



6° / 15°

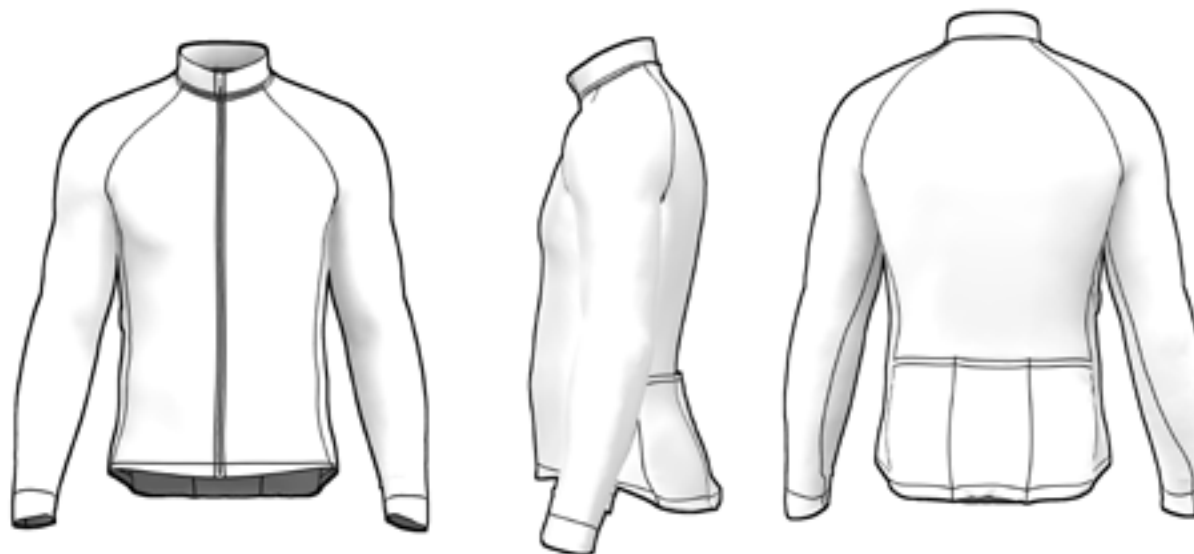


230 gr.



REGULAR  
FIT

Our garments run on the smaller side so if you are right on the border or between sizes, please order at least one size up. Each model was designed to fit differently to take advantage of the inherent characteristics of the materials used. Your size may also vary according to your personal preferences.



fabric:  
Interlock Fleece®

# FULLWIND

## Protection from the wind

Mid-season heavyweight jersey in breathable fabric with windproof membrane on the front, sides, sleeves and cuffs, thermal brushed fabric on the back. Full-length concealed zip with cam lock slider, reflective piping on the 3 back pockets, 30 mm silicone grip- per around the waist.

COD. PMLFUTU

### Physical properties of the fabric

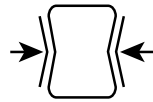
Water repellency	1	2	3		
Breathability	1	2	3		
Windproof	1	2	3	4	
Lightness	1				
UV protection	1	2	3	4	5



4° / 12°

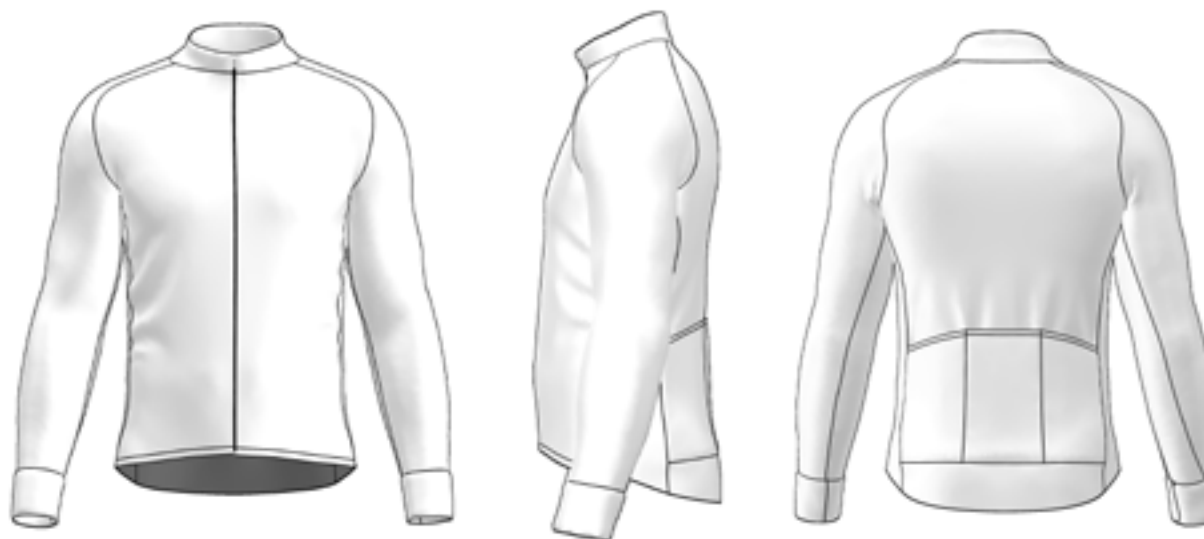


310 gr.



SLIM FIT

Our garments run on the smaller side so if you are right on the border or between sizes, please order at least one size up. Each model was designed to fit differently to take advantage of the inherent characteristics of the materials used. Your size may also vary according to your personal preferences.



**fabric:**  
Alpi 8 Bio®

**fabric:**  
Energy PLX®

# ZEROWIND

## Thermal balance

Mid-season jersey in breathable fabric with windproof membrane on the front and sides; thermal brushed fabric on the back and sleeves with cuffs. Full-length concealed zip with cam lock slider, reflective piping on the 3 back pockets, 30 mm silicone gripper around the waist.

COD. PMLZETU  
TAGLIO TOUR RAGLAN

COD. PMLZEGU  
TAGLIO GIRO

### Physical properties of the fabric

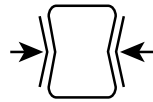
Water repellency	1	2			
Breathability	1	2	3	4	
Windproof	1	2	3		
Lightness	1	2	3	4	
UV protection	1	2	3	4	5



6° / 15°

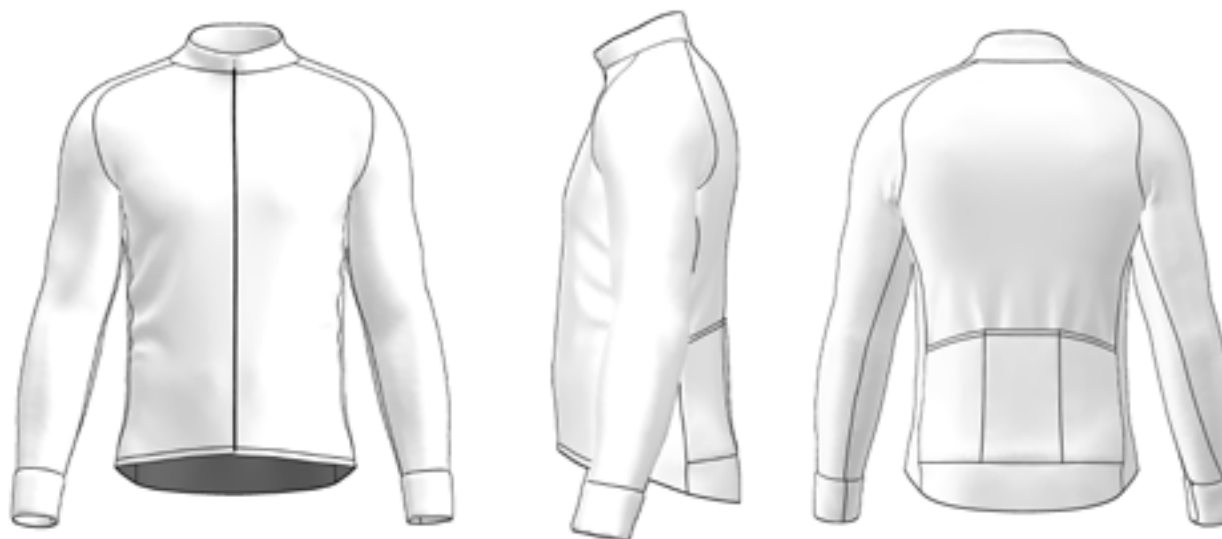


270 gr.



SLIM FIT

Our garments run on the smaller side so if you are right on the border or between sizes, please order at least one size up. Each model was designed to fit differently to take advantage of the inherent characteristics of the materials used. Your size may also vary according to your personal preferences.



**fabric:**  
Alpi 8 Bio®

**fabric:**  
Energy PLX®

# WIND RAIN COLD

- 25 - BORA JK
- 26 - GIRO JK
- 27 - SCIROCCO
- 28 - FLASH
- 29 - FLASH GRAVITY
- 30 - KLAUS
- 31 - GÖTA FRECC





# BORA JK

## No fear

Hi-tech jacket in heavyweight fabric with windproof and rainproof membrane. The properties of the membrane keep the breathability of the garment unaltered, preventing moisture from penetrating the fibres and thus offering a pleasant dry feeling on cold, wet days. Cut with Tour sleeves and cuffs, full-length concealed zipper with cam lock slider, reflective piping on the 3 back pockets, and 30 mm silicone gripper around the waist.

COD. PJKHEBU

### Physical properties of the fabric

Water repellency	1	2	3	4	
Breathability	1	2	3		
Windproof	1	2	3	4	5
Lightness	1	2			
UV protection	1	2	3	4	5



Our garments run on the smaller side so if you are right on the border or between sizes, please order at least one size up. Each model was designed to fit differently to take advantage of the inherent characteristics of the materials used. Your size may also vary according to your personal preferences.



**fabric:**  
Event Bike Fifty®

**fabric:**  
Alpi 8® Bio

**fabric:**  
Blizzard®

# GIRO JK

## A warm shell

Hi-tech jacket in heavyweight fabric with windproof and rainproof membrane. The properties of the membrane keep the breathability of the garment unaltered, preventing moisture from penetrating the fibres and thus offering a pleasant dry feeling on cold, wet days. Cut with Giro sleeves and cuffs, full-length concealed zipper with cam lock slider, reflective piping on the 3 back pockets, and 30 mm silicone gripper around the waist.

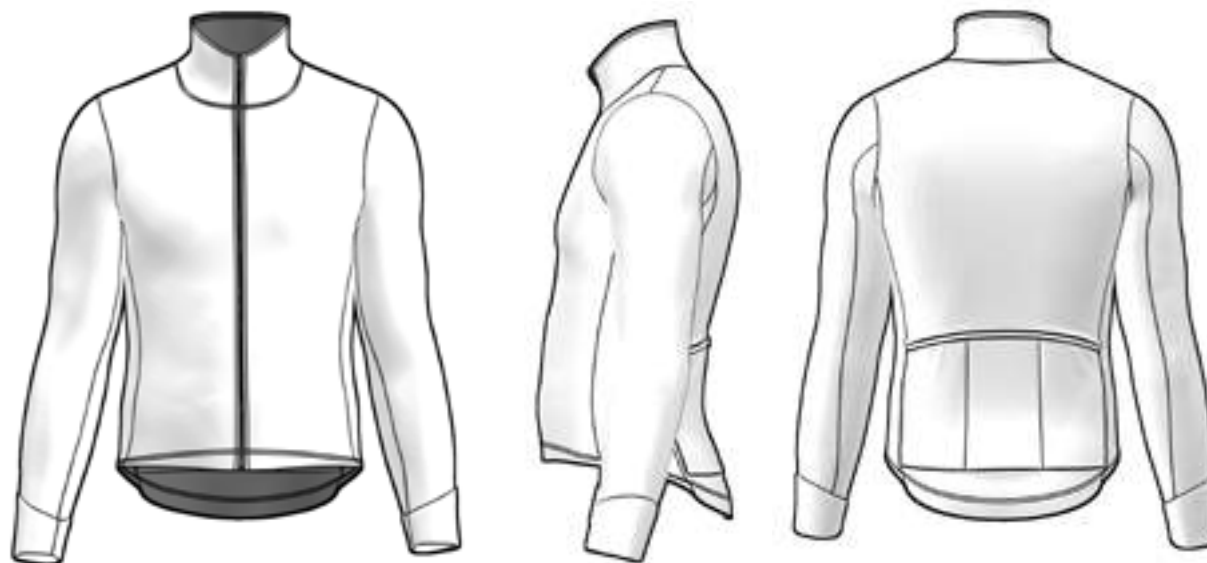
COD. PJKHEGU

### Physical properties of the fabric

Water repellency	1	2	3	4	
Breathability	1	2	3		
Windproof	1	2	3	4	5
Lightness	1	2			
UV protection	1	2	3	4	5



Our garments run on the smaller side so if you are right on the border or between sizes, please order at least one size up. Each model was designed to fit differently to take advantage of the inherent characteristics of the materials used. Your size may also vary according to your personal preferences.



**fabric:**  
Event Bike Fifty®

**fabric:**  
Alpi 8® Bio

**fabric:**  
Blizzard®

# SCIROCCO

## Lord of the winds

Heavyweight winter jacket with inner membrane. Full protection and breathability, even at low temperatures. Raglan sleeves with cuffs. Full-length concealed zipper with cam lock slider, 3 back pockets and silicone gripper around the waist. Available only in the Raglan cut.

COD. PJKSCIU

### Physical properties of the fabric

Water repellency	1	2	3	4	
Breathability	1	2	3		
Windproof	1	2	3	4	5
Lightness	1	2			
UV protection	1	2	3	4	5



-5° / 6°



390 gr.



REGULAR  
FIT

Our garments run on the smaller side so if you are right on the border or between sizes, please order at least one size up. Each model was designed to fit differently to take advantage of the inherent characteristics of the materials used. Your size may also vary according to your personal preferences.



 fabric:  
Fifty Soft®



 fabric:  
Alpi 8 Bio®



 fabric:  
Blizzard®

# FLASH

## The “must have”

Windproof and rainproof technical jacket with eVent® DW WIND® membrane, which can be easily packed into a pouch. Bora cut, sleeves with cuffs. Full-length concealed zipper with cam lock slider, silicone gripper around the waist.

COD. PJKFLAU  
TAGLIO BORA

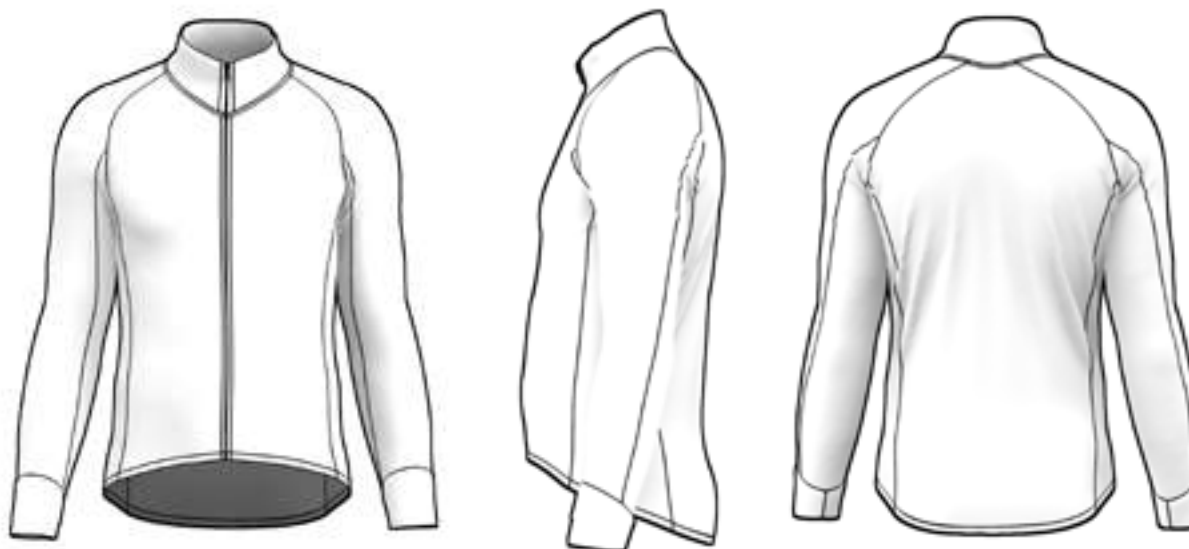
COD. PJKFHGU  
TAGLIO GIRO

### Physical properties of the fabric

Water repellency	1	2	3	4	
Breathability	1	2	3	4	
Windproof	1	2	3	4	5
Lightness	1	2	3	4	5
UV protection	1	2	3	4	5



Our garments run on the smaller side so if you are right on the border or between sizes, please order at least one size up. Each model was designed to fit differently to take advantage of the inherent characteristics of the materials used. Your size may also vary according to your personal preferences.



**fabric:**  
eVent® Shell Fifty Lock®

# FLASH GRAVITY

## Lightness and protection

Windproof, breathable, light, packable technical jacket. Bora cut, sleeves with cuffs. Full-length concealed zipper with cam lock slider, 10 mm silicone gripper around the waist.

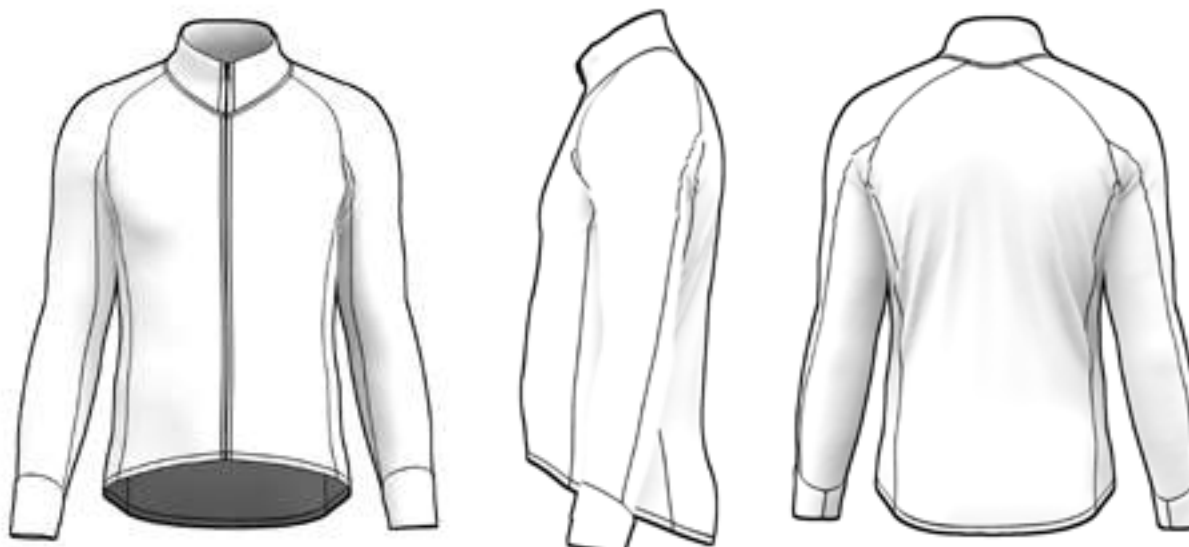
COD. PJKGRAU

### Physical properties of the fabric

Water repellency	1	2	3		
Breathability	1	2	3		
Windproof	1	2	3	4	5
Lightness	1	2	3	4	
UV protection	1	2	3	4	5



Our garments run on the smaller side so if you are right on the border or between sizes, please order at least one size up. Each model was designed to fit differently to take advantage of the inherent characteristics of the materials used. Your size may also vary according to your personal preferences.



 fabric:  
Gravity One®

# KLAUS

## The essential jacket

Windproof, ultra-lightweight, packable technical jacket in a blend of two fabrics. Front, back and sleeves in light windproof fabric, underarms and sides in breathable fabric. Raglan cut, sleeves with cuffs. Full-length concealed zipper with cam lock slider, 10 mm silicone gripper around the waist.

COD. **PJKKLAU**

### Physical properties of the fabric

Water repellency	1				
Breathability	1	2	3	4	
Windproof	1	2	3		
Lightness	1	2	3	4	5
UV protection	1	2	3	4	



Our garments run on the smaller side so if you are right on the border or between sizes, please order at least one size up. Each model was designed to fit differently to take advantage of the inherent characteristics of the materials used. Your size may also vary according to your personal preferences.



 fabric:  
Klaus®

 fabric:  
Scuba®

 fabric:  
Omega®

# GÓTA FRECC

## Total protection against the cold

Designed for the difficult conditions sometimes encountered mid-season. With breathable, waterproof, windproof and thermal fabric membrane. Set-in sleeves and flat twin-needle hem, 3 covered back pockets and inner silicone gripper around the waist. Storm flap on the back of the jersey. Available in printed version with full-length concealed zipper or piece-dyed with full-length waterproof zipper.

COD. **PMCGOFU**  
GOTA FREC NERO MC

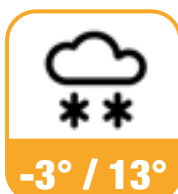
COD. **PMLGOFU**  
GOTA FREC NERO ML

COD. **PMCGOPU**  
GOTA FREC PRINT MC

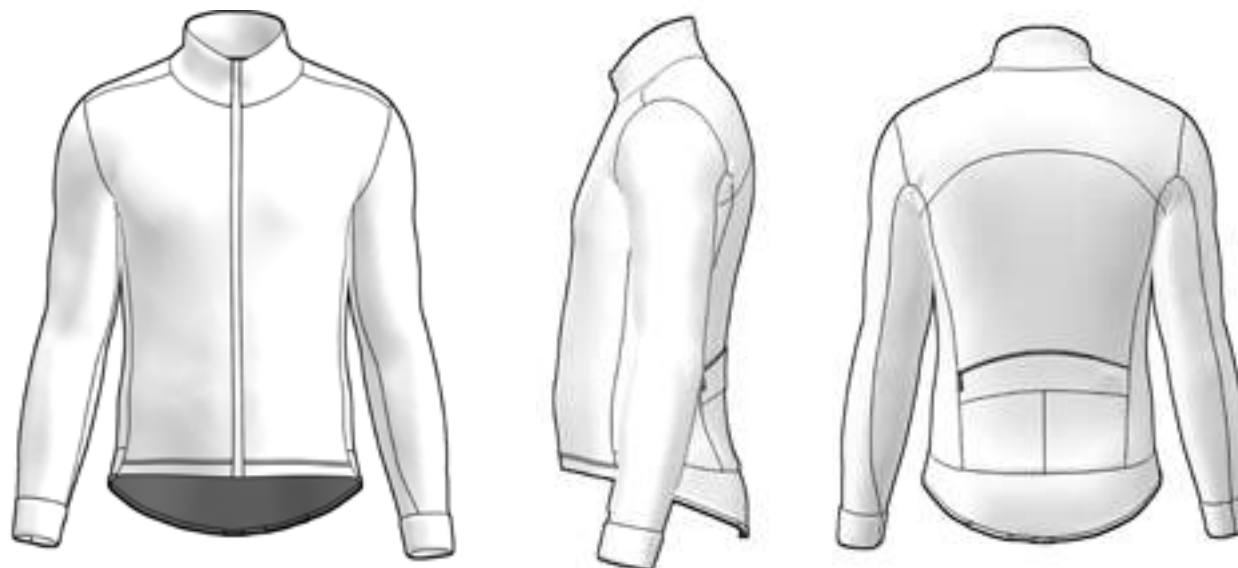
COD. **PMLGOPU**  
GOTA FREC PRINT ML

### Physical properties of the fabric

Water repellency	1	2	3	4	
Breathability	1	2	3	4	
Windproof	1	2	3	4	5
Lightness	1	2	3		
UV protection	1	2	3	4	5



Our garments run on the smaller side so if you are right on the border or between sizes, please order at least one size up. Each model was designed to fit differently to take advantage of the inherent characteristics of the materials used. Your size may also vary according to your personal preferences.



**fabric:**

DV Stretch Bike PumaMicrowave

# 5

## WINTER TIGHTS

- 33 - PRO1 CLX
- 34 - BOLT CLX





# PROI CLX

## Comfort and performance

Winter bib tights in SITIP thermal fabric, ergonomic, great fit, maximum performance. Inner silicone gripper around the ankles. Clean-cut, two-colour braces with 2 incorporated pockets. Pad of your choice.

**COD. PCZPT1W**  
TINTO PEZZA

**COD. PBXPR1W**  
BERMUDA STAMPATO

**COD. PCZPR1W**  
STAMPATA

**COD. PCXPT1W**  
CX INVERNALE TINTO PEZZA

**COD. PBXPT1W**  
BERMUDA TINTO PEZZA

**COD. PCXPR1W**  
CX INVERNALE STAMPATO

### Physical properties of the fabric

Water repellency	1	2		
Breathability	1	2	3	4
Windproof	1	2	3	
Lightness	1	2		
UV protection	1	2	3	4



Our garments run on the smaller side so if you are right on the border or between sizes, please order at least one size up. Each model was designed to fit differently to take advantage of the inherent characteristics of the materials used. Your size may also vary according to your personal preferences.



— fabric:  
Blizzard®

— fabric:  
Cobra®



— fabric:  
Mango®



— fabric:  
elastic

# BOLT CLX

## Queen of the cold

Winter bib tights in SITIP® thermal fabric. Ergonomic, great fit, high performance. Inner silicone gripper around the ankles. Winter braces with pad of your choice.

COD. **PCZBOTW**  
TINTO PEZZA

COD. **PBXBOLW**  
BERMUDA STAMPATO

COD. **PCZBOLW**  
STAMPATA

COD. **PCXBOTW**  
CX INVERNALE TINTO PEZZA

COD. **PBXBOTW**  
BERMUDA TINTO PEZZA

COD. **PCXBOLW**  
CX INVERNALE STAMPATO

### Physical properties of the fabric

Water repellency	1	2		
Breathability	1	2	3	4
Windproof	1	2	3	
Lightness	1	2		
UV protection	1	2	3	4



Our garments run on the smaller side so if you are right on the border or between sizes, please order at least one size up. Each model was designed to fit differently to take advantage of the inherent characteristics of the materials used. Your size may also vary according to your personal preferences.



fabric:  
Blizzard®



fabric:  
Superoubaix®

# 7 GRAVEL

- 36 - BRECCIA
- 37 - VINTAGE
- 38 - TRUCK



# BRECCIA

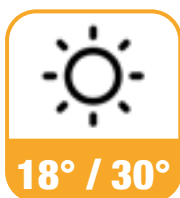
## Prêt-à-Porter on two wheels

This is our Gravel jersey. The perfect loose-fitting casual comfort look. In quick-drying Merinos Plus® and Elastan. Mandarin collar with 3-button placket, handy pocket on the left sleeve and back pocket with concealed zipper. Sleeves and waist with flat twin-needle hem.

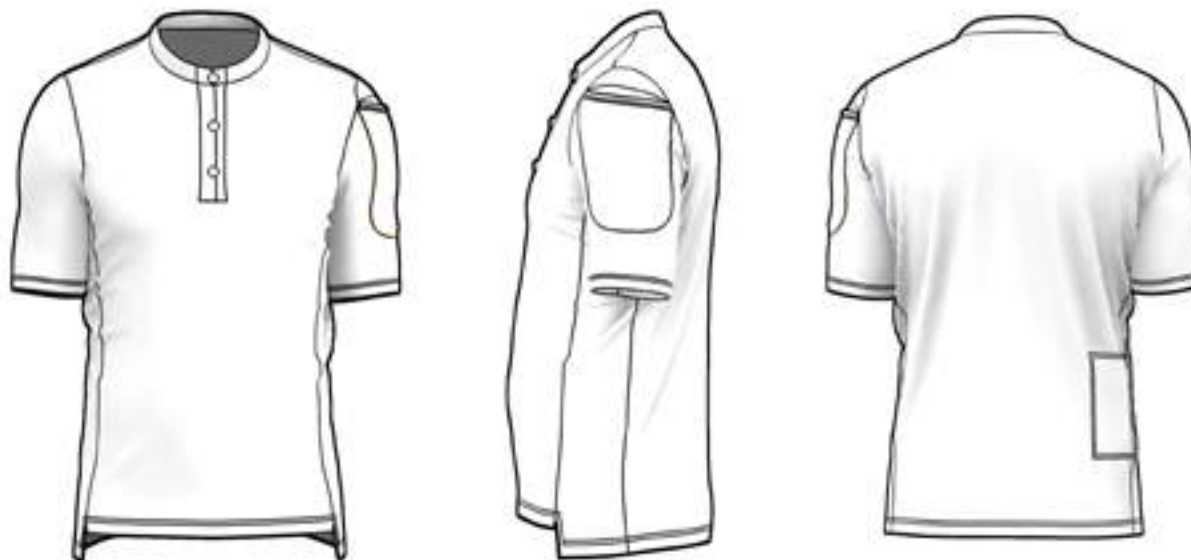
COD. **PMCBREU**

### Physical properties of the fabric

Water repellency	1				
Breathability	1	2	3	4	5
Windproof	1				
Lightness	1	2	3	4	
UV protection	1	2	3		



Our garments run on the smaller side so if you are right on the border or between sizes, please order at least one size up. Each model was designed to fit differently to take advantage of the inherent characteristics of the materials used. Your size may also vary according to your personal preferences.



tessuto:  
Scotland®

# VINTAGE

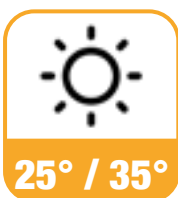
## Back to the past

The Vintage jersey is composed of a revolutionary high-performance merinos and elastane wool fabric with quick drying. The design of the front pockets brings to mind a period of our history, when the concept of the back pockets did not yet exist. A jump back that is a leap forward, because connecting with the story means finding yourself and regenerate starting from the direct charm of pleasure to skin. Two front pockets with buttons and 3 back pockets. Short, concealed zipper with cam lock slider and set-in sleeves with flat hem.

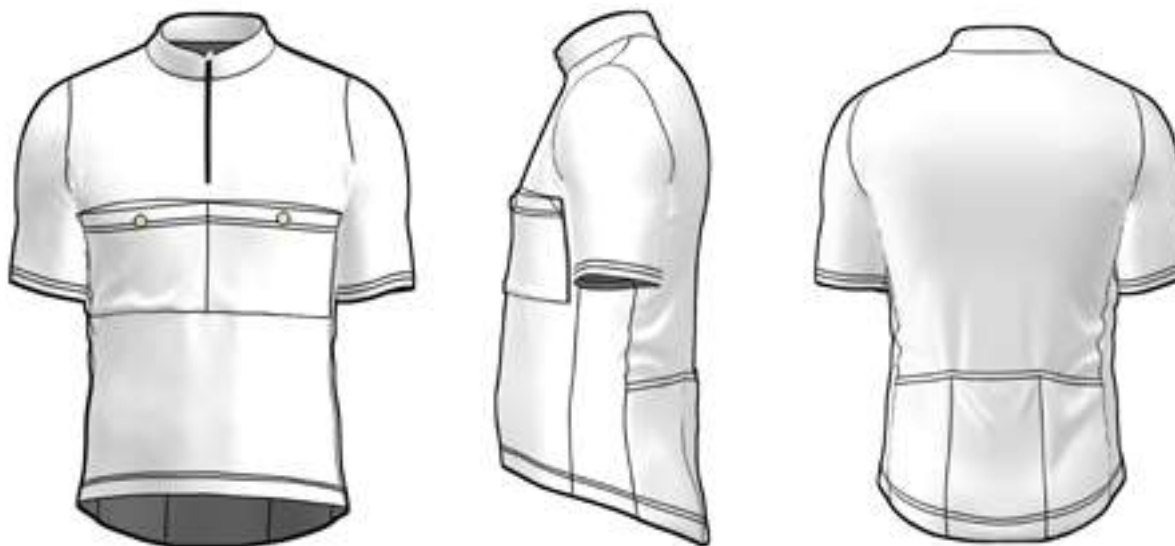
COD. **PMCVINU**

### Physical properties of the fabric

Water repellency	1				
Breathability	1	2	3	4	5
Windproof	1	2			
Lightness	1	2	3	4	5
UV protection	1	2			



Our garments run on the smaller side so if you are right on the border or between sizes, please order at least one size up. Each model was designed to fit differently to take advantage of the inherent characteristics of the materials used. Your size may also vary according to your personal preferences.



fabric:  
Scotland®

# TRUCK

## Infinite space

These are our Gravel shorts, designed for long journeys. With 2 back pockets applied to the braces, a large pocket at the waist and 2 mesh pockets on the thighs, they have the necessary space for essential supplies. Clean-cut, two-colour braces with 2 incorporated pockets. Silicone gripper around the thighs. Pad of your choice.

COD. PCXTRUE

### Physical properties of the fabric

Water repellency	1			
Breathability	1	2	3	4
Windproof	1	2		
Lightness	1	2	3	4
UV protection	1	2	3	4



Our garments run on the smaller side so if you are right on the border or between sizes, please order at least one size up. Each model was designed to fit differently to take advantage of the inherent characteristics of the materials used. Your size may also vary according to your personal preferences.



— fabric: Thunderbike®

— fabric: Mango®

— fabric: Power Net®

— fabric: elastic

# 8

## OFF ROAD FREERIDE

- 40 - FREERIDE
- 41 - ALLMOUNTAIN
- 42 - GERA
- 43 - ROCK



# FREERIDE

## My element is mud

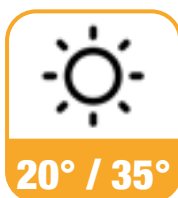
The Freeride jersey is perfect for off-road adventures. Comfy and versatile, with an uncompromising cut and a racing look, it offers full freedom of movement. Technical fabrics with a special, breathable blend and excellent moisture-wicking properties. Available in the long-sleeved and short-sleeved versions.

COD. **PMCFREU**  
MANICA CORTA

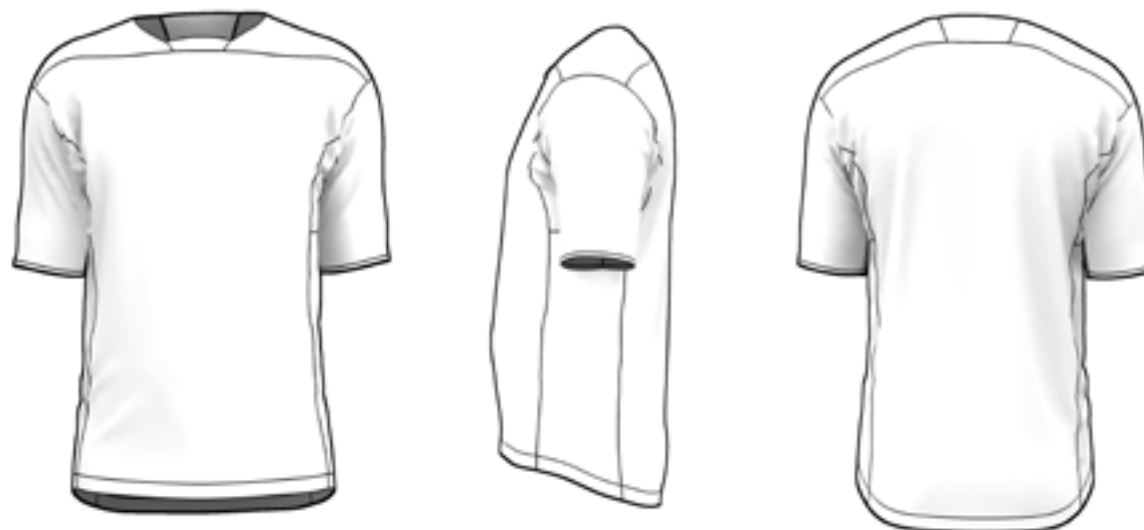
COD. **PMLFREU**  
MANICA LUNGA

### Physical properties of the fabric

Water repellency	1	2		
Breathability	1	2	3	4
Windproof	1			
Lightness	1	2	3	4
UV protection	1	2	3	



Our garments run on the smaller side so if you are right on the border or between sizes, please order at least one size up. Each model was designed to fit differently to take advantage of the inherent characteristics of the materials used. Your size may also vary according to your personal preferences.



 fabric:  
Bicimania®

 fabric:  
Full Mesh®



# ALLMOUNTAIN

## Comfort and performance

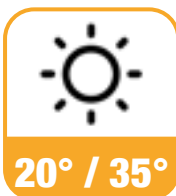
The short-sleeved Allmountain jersey is comfy, versatile, with a close-fitting cut and an understated look. Created in a special blend, breathable technical fabric that ensures quick drying and moisture-wicking properties. Short, concealed zipper with cam lock slider. Available in the long-sleeved and short-sleeved versions.

COD. P<sup>M</sup>CALLU  
MANICA CORTA

COD. P<sup>M</sup>LALLU  
MANICA LUNGA

### Physical properties of the fabric

Water repellency	1	2		
Breathability	1	2	3	4
Windproof	1	2		
Lightness	1	2	3	4
UV protection	1	2	3	



Our garments run on the smaller side so if you are right on the border or between sizes, please order at least one size up. Each model was designed to fit differently to take advantage of the inherent characteristics of the materials used. Your size may also vary according to your personal preferences.



fabric:  
Bicimania®

# GERA

## cycling off the beaten path

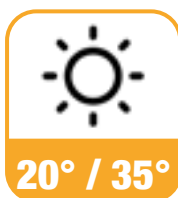
GERA ("gravel" in the Bergamo dialect), the lightweight, versatile, breathable and comfy jersey that is ideal for out of town and off-road excursions.

Tour cut with stitched edge on the sleeves and a knitted bottom, V-neck.

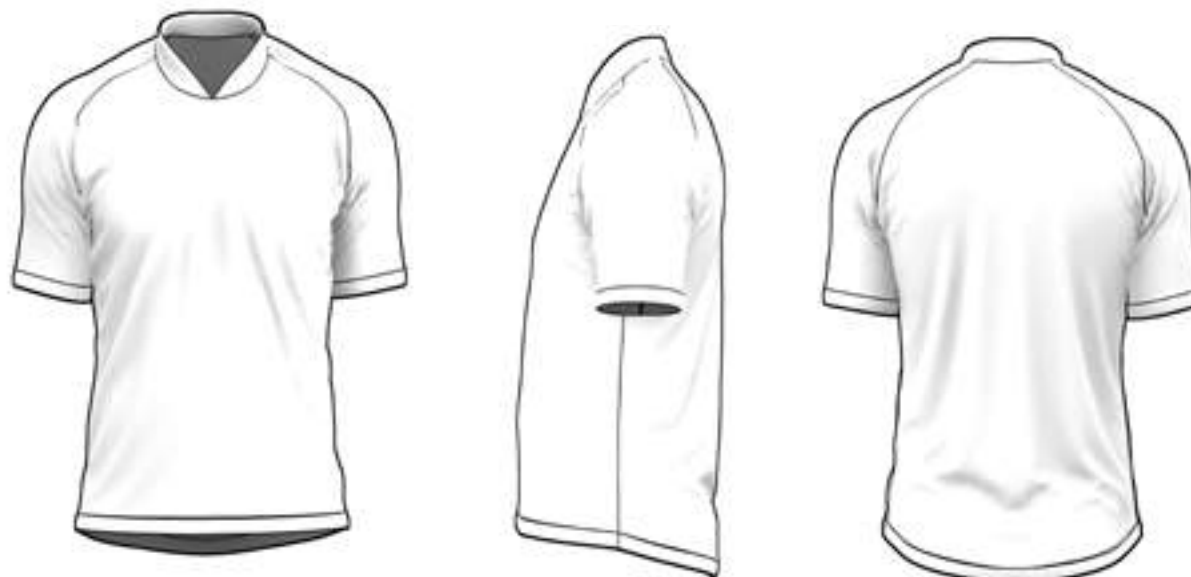
COD. **PMCGERU**

### Physical properties of the fabric

Water repellency	1				
Breathability	1	2	3	4	5
Windproof	1				
Lightness	1	2	3	4	5
UV protection	1	2	3		



Our garments run on the smaller side so if you are right on the border or between sizes, please order at least one size up. Each model was designed to fit differently to take advantage of the inherent characteristics of the materials used. Your size may also vary according to your personal preferences.



 fabric:  
Maverick®

# ROCK

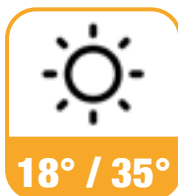
## Freedom without frontiers

ROCK trail shorts in resistant stretch fabric. Perforated inner leg for ventilation, silicone waistband adjustable with Velcro, 2 front buttons and zipper, three pockets with zip fastening. Customisable only with thermoplastic print. Without pad.

COD. **PCXROCU**

### Physical properties of the fabric

Water repellency	1	2		
Breathability	1	2	3	
Windproof	1	2		
Lightness	1	2	3	4
UV protection	1	2	3	



Our garments run on the smaller side so if you are right on the border or between sizes, please order at least one size up. Each model was designed to fit differently to take advantage of the inherent characteristics of the materials used. Your size may also vary according to your personal preferences.



— fabric:  
Vaporize®

customizable only  
with thermoplastic  
printing

# RO BODY

- 45 - BODY VELOCE
- 46 - BODY STILE
- 47 - ROCKET
- 48 - CRONO
- 49 - BODY CORSA



# BODY VELOCE

## Fast as the wind

Il body gara Veloce veste il corpo come un guanto. Corpino apribile, maniche taglio Giro bodyfit con taglio al vivo. Zip lunga invisibile con cursore camlock e bordino rifrangente sulle 2 tasche posteriori. Pantaloncino estivo a scelta escluso taglio BOLT. Fondello a scelta. Disponibile anche a manica lunga.

COD. **PBDGCP**  
PRO1

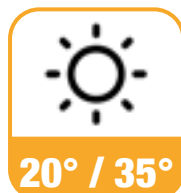
COD. **PBDGLPE**  
PRO1 MANICA LUNGA

COD. **PBDGCOE**  
BOOST

COD. **PBDGLOE**  
BOOST MANICA LUNGA

### Physical properties of the fabric

Water repellency	1				
Breathability	1	2	3	4	5
Windproof	1	2			
Lightness	1	2	3	4	5
UV protection	1	2			



Our garments run on the smaller side so if you are right on the border or between sizes, please order at least one size up. Each model was designed to fit differently to take advantage of the inherent characteristics of the materials used. Your size may also vary according to your personal preferences.



fabric: Pirata®
  fabric: Native Sanremo®
  fabric: Bicimania®
  fabric: Thunderbike®
  fabric: Sportage®

# BODY STILE

## Race in style

Stile racing bodysuit is the perfect combination of jersey and shorts. Openable bodice, clean-cut Tour cut Bodyfit sleeves. Full-length concealed zipper with cam lock slider and reflective piping on the 2 back pockets. Summer shorts of your choice excluding BOLT cut. Pad of your choice. Also available with long sleeves.

COD. **PBDSCPE**  
PRO1

COD. **PBDSLPE**  
PRO1 MANICA LUNGA

COD. **PBDSCOE**  
BOOST

COD. **PBDSLOE**  
BOOST MANICA LUNGA

### Physical properties of the fabric

Water repellency	1				
Breathability	1	2	3	4	5
Windproof	1	2			
Lightness	1	2	3	4	5
UV protection	1	2			



Our garments run on the smaller side so if you are right on the border or between sizes, please order at least one size up. Each model was designed to fit differently to take advantage of the inherent characteristics of the materials used. Your size may also vary according to your personal preferences.



 fabric:  
Pirata®

 fabric:  
Native Sanremo®

 fabric:  
Bicimania®

 fabric:  
Bost®

# ROCKET

$$E = mc^2$$

Rocket is the high-performance time-trial bodysuit. Tested in a wind tunnel, it has achieved surprising results thanks to the choice of fabrics with differentiated weaves. Clean-cut Giro sleeves and silicone on cuffs, full-length zipper on the front, transparent PVC number pocket with internal opening on back, clean-cut shorts with inner silicone gripper at the thighs. Pad of your choice.

COD. PBDROCE


#### Physical properties of the fabric


Water repellency	1			
Breathability	1	2	3	
Windproof	1	2		
Lightness	1	2	3	
UV protection	1	2	3	4



Our garments run on the smaller side so if you are right on the border or between sizes, please order at least one size up. Each model was designed to fit differently to take advantage of the inherent characteristics of the materials used. Your size may also vary according to your personal preferences.



 **fabric:**  
Cyber Rider Stripe®

 **fabric:**  
Thunderbike® / Boost®

# CRONO

## The Lord of Time

Racing bodysuit in ultra-smooth, tightly woven fabric for improved aerodynamics. Clean-cut Bodyfit tour sleeves, full-length front zipper and collar with piping. Summer shorts of your choice. Also available with long sleeves. Pad of your choice.

COD. **PBDCBCE**  
MC BOLT

COD. **PBDCLPE**  
ML PRO1

COD. **PBDCCE**  
MC PRO1

COD. **PBDCLOE**  
ML BOOST

COD. **PBDCOE**  
MC BOOST

COD. **PBDCLBW**  
ML BOLT INVERNALE

COD. **PBDCLBE**  
ML BOLT

COD. **PBDCLPW**  
ML PRO1 INVERNALE

### Physical properties of the fabric


Water repellency	1				
Breathability	1	2	3	4	5
Windproof	1	2			
Lightness	1	2	3	4	5
UV protection	1	2			



Our garments run on the smaller side so if you are right on the border or between sizes, please order at least one size up. Each model was designed to fit differently to take advantage of the inherent characteristics of the materials used. Your size may also vary according to your personal preferences.



 fabric:  
Sportage®

 fabric:  
Thunderbike® / Boost®



# BODY CORSA

## No-frills performance

Racing bodysuit in ultralight perforated fabric for maximum ventilation of the body. Tour Bodyfit sleeves with raw cut, long zip on the front and neck with draw-string. Bolt summer shorts. Available only with short sleeves. Pad of your choice.

COD. **PBDRCP**E

### PROPRIETÀ FISICHE DEL TESSUTO

Idrorepellenza	1				
Traspirabilità	1	2	3	4	5
Antivento	1				
Leggerezza	1	2	3	4	5
Protezione UV	1				




Our garments run on the smaller side so if you are right on the border or between sizes, please order at least one size up. Each model was designed to fit differently to take advantage of the inherent characteristics of the materials used. Your size may also vary according to your personal preferences.



 tessuto:  
Half Moon®

 tessuto:  
Pirata®

 tessuto:  
Thunderbike®/Sportage®

# 10

## TRIATHLON

- 51 - TRIGARA VELOCE
- 52 - TRIGARA STILE
- 53 - IRON
- 54 - OBLÒ
- 55 - LEGOR



# TRIGARA VELOCE

## Water, air and earth

Triathlon bodysuit with openable bodice, Giro cut Bodyfit sleeves, also available with long sleeves. Full-length concealed zipper with cam lock slider and reflective piping on the 2 back pockets. Summer shorts of your choice excluding BOLT cut. Triathlon pad of your choice. Also available with long sleeves.

COD. **PBDGCOE**  
VELOCE BOOST MC

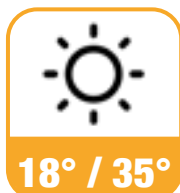
COD. **PBDGLOE**  
VELOCE BOOST ML

COD. **PBDGCPD**  
VELOCE PRO1 MC

COD. **PBDGLPE**  
VELOCE PRO1 ML

### Physical properties of the fabric

Water repellency	1				
Breathability	1	2	3	4	5
Windproof	1	2			
Lightness	1	2	3	4	5
UV protection	1	2			



Our garments run on the smaller side so if you are right on the border or between sizes, please order at least one size up. Each model was designed to fit differently to take advantage of the inherent characteristics of the materials used. Your size may also vary according to your personal preferences.



fabric: Pirata®
  fabric: Native Sanremo®
  fabric: Bicimania®
  fabric: Thunderbike®
  fabric: Sportage®

# TRIGARA STILE

## Acqua, aria e terra

Triathlon bodysuit with openable bodice, Raglan cut Bodyfit sleeves, also available with long sleeves. Full-length concealed zipper and reflective piping on the 2 back pockets. Summer shorts of your choice excluding BOLT cut. Triathlon pad of your choice.

COD. **PBDSCOE**  
STILE BOOST MC

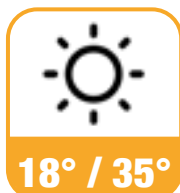
COD. **PBDSLOE**  
STILE BOOST ML

COD. **PBDSOPE**  
STILE PRO1 MC

COD. **PBDSLPE**  
STILE PRO1 ML

### Physical properties of the fabric

Water repellency	1				
Breathability	1	2	3	4	5
Windproof	1	2			
Lightness	1	2	3	4	5
UV protection	1	2			



Our garments run on the smaller side so if you are right on the border or between sizes, please order at least one size up. Each model was designed to fit differently to take advantage of the inherent characteristics of the materials used. Your size may also vary according to your personal preferences.



fabric: Pirata®
  fabric: Native Sanremo®
  fabric: Bicimania®
  fabric: Thunderbike®
  fabric: Sportage®

# IRON

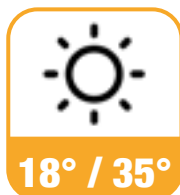
## The legendary bodysuit

The Iron bodysuit has a body-hugging ergonomic cut that favours the body's movements. The fabric wraps the body like a glove, adapting perfectly to every shape. Inner silicone grippers around the ankles. Full-length front or back zipper with pull strap. Fully customizable. Triathlon pad of your choice.

COD. **PBDIR**

### Physical properties of the fabric

Water repellency	1	2	
Breathability	1	2	3
Windproof	1	2	
Lightness	1	2	3
UV protection	1	2	



Our garments run on the smaller side so if you are right on the border or between sizes, please order at least one size up. Each model was designed to fit differently to take advantage of the inherent characteristics of the materials used. Your size may also vary according to your personal preferences.



— fabric:  
Monica Light®

— fabric:  
Thaiti®

— fabric:  
Elastic

# OBLÒ

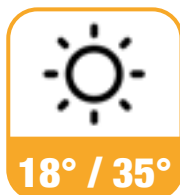
## Queen of the Amazons

The Oblo' bodysuit has a women's ergonomic cut, with a large opening at the back that allows maximum freedom of movement. The fabric wraps the body like a glove. Clean cut leg, no grippers and mesh pocket on the back. Fully customisable. Triathlon pad of your choice.

COD. **PBDOUBLE**

### Physical properties of the fabric

Water repellency	1	2		
Breathability	1	2	3	
Windproof	1	2		
Lightness	1	2	3	4
UV protection	1	2		



Our garments run on the smaller side so if you are right on the border or between sizes, please order at least one size up. Each model was designed to fit differently to take advantage of the inherent characteristics of the materials used. Your size may also vary according to your personal preferences.



— fabric:  
Monica Light®

— fabric:  
Power Net®

# LEGOR

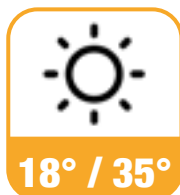
## Faster than a hare

The Legor bodysuit has a minimal cut, few seams and high-performance fabric. The fabric wraps the body like a glove. Elastic-free clean-cut legs. Choice of front or back zipper with drawstring. Fully customizable. Triathlon pad of your choice.

COD. **PBDLE**

### Physical properties of the fabric

Water repellency	1	2		
Breathability	1	2	3	
Windproof	1	2		
Lightness	1	2	3	4
UV protection	1	2		



Our garments run on the smaller side so if you are right on the border or between sizes, please order at least one size up. Each model was designed to fit differently to take advantage of the inherent characteristics of the materials used. Your size may also vary according to your personal preferences.



— fabric:  
Monica Light®

# 11

KIDS

- 57 - KIDS MC
- 58 - KIDS CX
- 59 - KIDS ML
- 60 - KIDS CLX
- 61 - KIDS JK





# KIDS MC

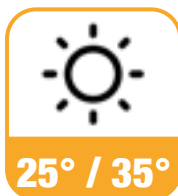
## Performance and affordability

Corsa is the jersey with the best cost-performance ratio. The Raglan cut in a lightweight, breathable fabric lends this garment a loose fit. Sleeves with flat twin-needle hem, full-length concealed zip with neutral cam lock slider, 3 back pockets with flat hem and 25 mm silicone gripper around the waist.

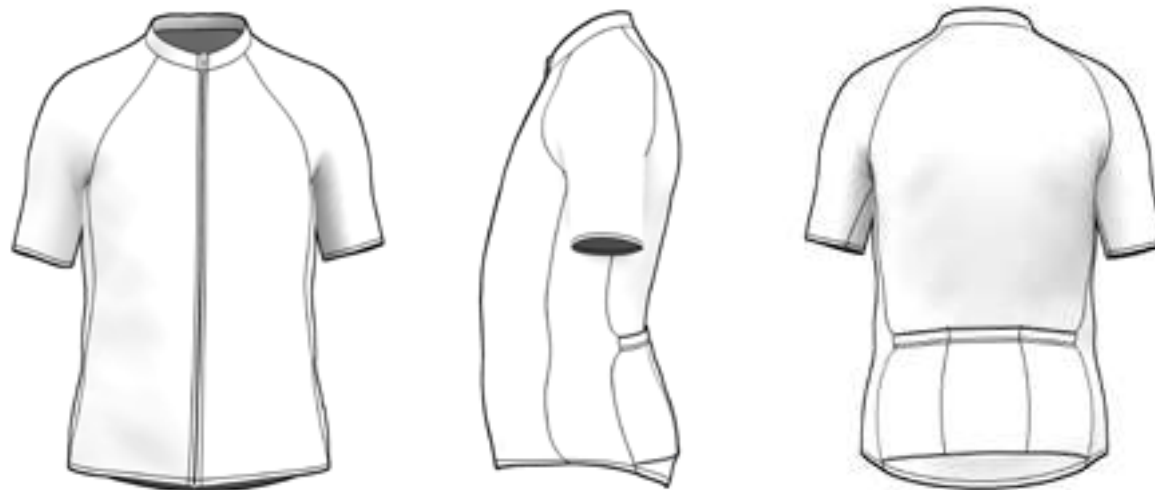
COD. KMCKIDU

### Physical properties of the fabric

Water repellency	1				
Breathability	1	2	3	4	5
Windproof	1				
Lightness	1	2	3	4	5
UV protection	1	2			



Our garments run on the smaller side so if you are right on the border or between sizes, please order at least one size up. Each model was designed to fit differently to take advantage of the inherent characteristics of the materials used. Your size may also vary according to your personal preferences.



 fabric:  
Half Moon®

fabric:  
Half Moon®

# KIDS CX

## Hard-wearing and reliability

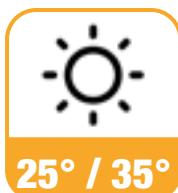
Hard-wearing, practical summer shorts in a high-density, breathable fabric with good resistance to pilling. Silicone gripper around the thighs. Mesh braces with fully edged hexagonal texture. Pads of your choice.

COD. KCXKIDEKBU  
STAMPATO BRETELLE BIANCHE

COD. KCXKIDEKNU  
STAMPATO BRETELLE NERE

### Physical properties of the fabric

Water repellency	1	2			
Breathability	1	2	3	4	
Windproof	1	2			
Lightness	1	2	3	4	
UV protection	1	2	3	4	5



Our garments run on the smaller side so if you are right on the border or between sizes, please order at least one size up. Each model was designed to fit differently to take advantage of the inherent characteristics of the materials used. Your size may also vary according to your personal preferences.



— fabric:  
Sportage®

— fabric:  
Thunderbike®

— fabric:  
Full Mesh®

— fabric:  
elastic

# KIDS ML

## The middle season

Long-sleeved Raglan cut jersey, ideal on cool, mid-season days. Lightweight, breathable, thermal brushed fabric with loose fit, 55 mm cuffs and full-length concealed zipper with cam lock slider, 3 back pockets and 30 mm silicone gripper around the waist.

COD. **KMLKIDU**

### Physical properties of the fabric

Water repellency	1			
Breathability	1	2	3	4
Windproof	1	2		
Lightness	1	2	3	4
UV protection	1	2		



6° / 15°

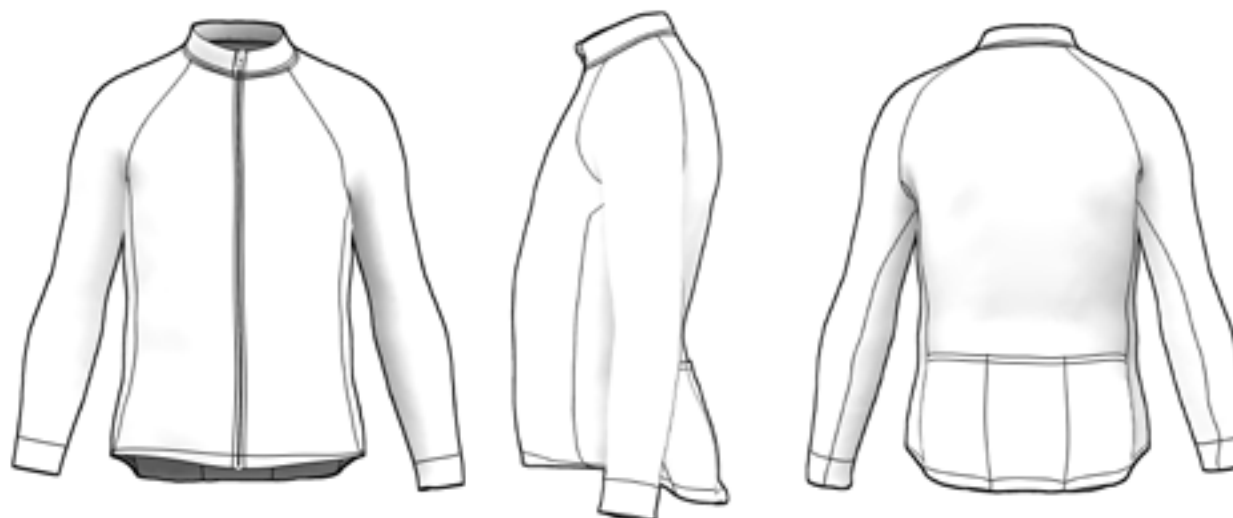


215 gr.



REGULAR  
FIT

Our garments run on the smaller side so if you are right on the border or between sizes, please order at least one size up. Each model was designed to fit differently to take advantage of the inherent characteristics of the materials used. Your size may also vary according to your personal preferences.



fabric:  
Interlock Fleece®

# KIDS CLX

## Queen of the cold

Winter bib tights in SITIP® thermal fabric. Ergonomic, great fit, high performance. Inner silicone gripper around the ankles. Winter braces with pad of your choice.

COD. KCZKIDWKWU  
STAMPATO

### Physical properties of the fabric

Water repellency	1	2		
Breathability	1	2	3	4
Windproof	1	2	3	
Lightness	1	2		
UV protection	1	2	3	4



Our garments run on the smaller side so if you are right on the border or between sizes, please order at least one size up. Each model was designed to fit differently to take advantage of the inherent characteristics of the materials used. Your size may also vary according to your personal preferences.



— fabric:  
Blizzard®

— fabric:  
Superoubaix®

# KIDS JK

## The Lord of the winds

Heavyweight winter jacket with inner membrane. Full protection and breathability, even at low temperatures. Raglan sleeves with cuffs. Full-length concealed zipper with cam lock slider, 3 back pockets and silicone gripper around the waist. Available only in the Raglan cut.

COD. KJKKIDU

### Physical properties of the fabric

Water repellency	1	2	3	4	
Breathability	1	2	3		
Windproof	1	2	3	4	5
Lightness	1	2			
UV protection	1	2	3	4	5



-5° / 6°

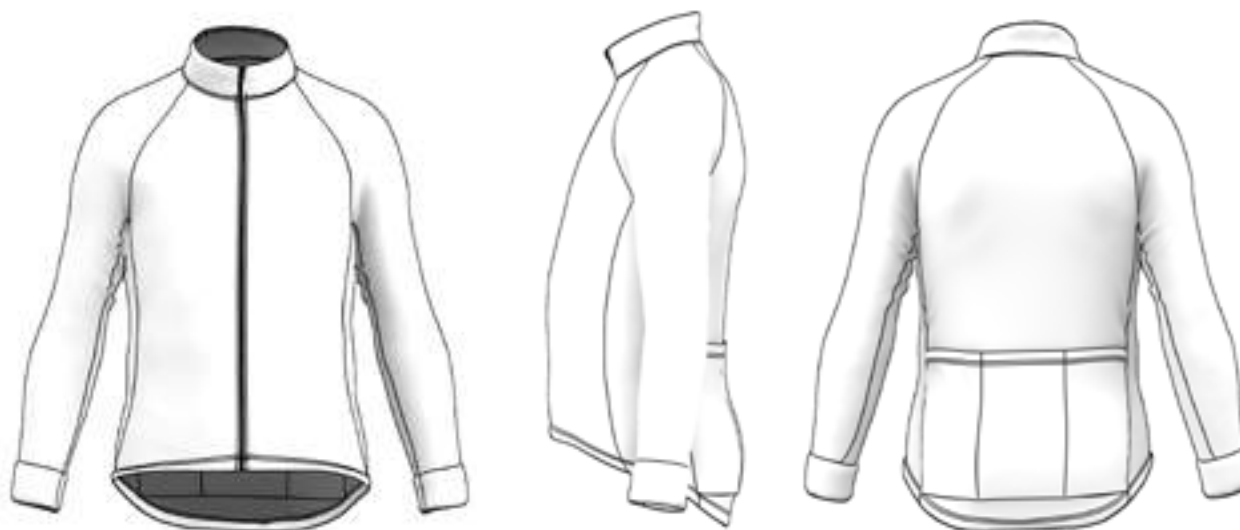


375 gr.



REGULAR  
FIT

Our garments run on the smaller side so if you are right on the border or between sizes, please order at least one size up. Each model was designed to fit differently to take advantage of the inherent characteristics of the materials used. Your size may also vary according to your personal preferences.



fabric:  
Fifty Soft®

# 12

## ACCESSORIES

- 63** - SUMMER GLOVES
- 64** - WINTER GLOVES
- 65** - LEG WARMER
- 66** - ARM SLEEVE
- 67** - SOCKS
- 68** - OVERSHOES
- 69** - CAPS
- 70** - PADS
- 71** - PADS



## ALLROAD

### Comfort and lightness

Summer glove ideal for competition and training with back in light, breathable fabric, palm with thickened padding and sweat-wicking fabric on the thumb. Piping on the cuffs.

COD. PGLALLU  
MIN. 10 PZ.



- back: light and breathable
- palm: suede

## BINGO

### Silky smooth hands.

Summer glove in multidirectional stretch fabric, utmost comfort for the delicate skin of the hands and wrists. The inner fabric of the gloves is made of highly adherent material and the palm padding is thickened to guarantee better protection. This glove has tabs to help pull it on and off.

COD. PGLBINU  
MIN. 10 PZ.



- back: snug fabric
- palm: suede

# MTB OFFROAD PRO

## Control and precision

MTB OFFROAD PRO is the mountain bike glove for summer made of 4 different high-performance technical fabrics. The palm in perforated suede fabric offers maximum control. The back, in breathable fabric, with reinforcement on the index and middle fingers offers a sensation of real comfort, the ring and little fingers is in abrasion-resistant fabric to protect the most exposed parts of the hand while the inside of the fingers is in breathable mesh. Stretch cuffs.

COD. PGLOFFU  
MIN. 10 PZ.

# WINTER TOUCH

## Some like it hot

The winter glove is designed for the use of electronic devices. Back in WINDTEX® thermal fleece fabric, it retains heat and wicks away moisture. The palm padding is thicker to ensure greater protection, and the thumb is made of sweat wicking fabric. The slot for touch screen use makes the WINTER TOUCH glove the smart accessory par excellence.

COD. PGLWINU  
MIN. 10 PZ.



-  **back:**  
abrasion resistant
-  **back:**  
breathable
-  **inner fingers:**  
mesh
-  **palm:**  
suede

-  **back:**  
Windtex®
-  **palo:**  
suede



## KNEEPLUS

### Winter knee pad

KneePlus is the knee pad that provides the thermal protection needed to cope with the harsh weather on winter mornings. Upper and lower edge with silicone gripper that helps keep the knee pad in place even during intense effort.

COD. PACGINWU  
STAMPATO  
MIN. 10 PZ.

COD. PACGITWU  
TINTO PEZZA  
MIN. 10 PZ.

## LEGPLUS

### Winter leg warmer

The thermal properties of the BLIZZARD leg warmer in soft and comfortable fabric keep athletes' legs at an optimal temperature during training. Silicone gripper around the thigh and ankle.

COD. PACGAMWU  
STAMPATO  
MIN. 10 PZ.

COD. PACGATWU  
TINTO PEZZA  
MIN. 10 PZ.

## DRYLEG

### Mid-season leg warmer

Leg warmer in DRYARN® fabric known for its bacteriostatic properties, it impedes the conditions in which harmful micro-organisms grow and is ideal for sensitive skin. DRYLEG is ideal for the mid-season and for winter thanks to its thermal properties that keep in the heat better than any other fibre. NOT CUSTOMISABLE.

COD. PACGAMDU



● fabric:  
Blizzard®

● fabric:  
Blizzard®

● fabric:  
Dryarn®

## ARMPPLUS

### Winter arm sleeve

The arm sleeve in BLIZZARD BEHOT® is the optimal choice, offering the thermal protection needed to cope with the harsh weather on winter mornings. Silicone gripper around the arm and cuff.

COD. PACMANWU  
STAMPATO  
MIN. 10 PZ.

COD. PACMATWU  
TINTO PEZZA  
MIN. 10 PZ.



 fabric:  
Blizzard®


## ARMLIGHT

### Mid-season arm warmer

The Armlight arm warmer is made in DRYARN®, a single, enhanced performance Lycra yarn that embraces and insulates the delicate area of the arms. The ARMLIGHT fabric changes its texture and is divided into 5 zones to provide the most appropriate pressure at each point of the arm; the result is correct blood circulation and a sensation of protection. NOT CUSTOMISABLE.

COD. PACMANDU



 fabric:  
Dryarn®

## **STRIPE**

### The Rosti sock.

Stripe is Rosti's summer sock in soft, breathable fabric doubled on the instep to increase adherence to the shoe without hindering proper blood circulation. Simple and essential, it can be customised in any colour.

COD. **PSOCOTU**  
MIN. 100 PZ.

## **VEGA**

### Light as air

Soft, extremely light and aerodynamic, it hugs the ankle and calf without being elasticised, favouring blood circulation and minimising friction with the air. The special multidirectional fabric keeps the skin dry and cool. The foot is in reinforced fabric and guarantees utmost comfort with any type of shoe.

COD. **PSOVEGU**  
MIN. 12 PZ.

## **MERINOS**

### Natural insulation


Winter sock in fine merino wool. No material is more versatile in maintaining the correct body temperature.

COD. **PSOVEGU**  
MIN. 100 PZ.



 **fabric:**  
Poliammide



 **fabric:**  
Tegea®



 **fabric:**  
Lana Merinos

# **SUPER FLY**

## Ideal for cold and windy weather

SUPERFLY is ideal in maintaining comfort when practising sports in extremely cold weather. It has a wind proof membrane in WINDTEX® fabric that prevents the passage of cold air while enhancing breathability and retaining the heat. Wide central band in waterproofing and insulating Neoprene. Reflective fabric on the heel for maximum visibility even in extreme conditions. Concealed back zipper closed by lightened Velcro and double inner seams. Customisable on the sides.

**COD. PGASUPU**  
MIN. 10 PZ.



**fabric:**  
Neoprene®

**fabric:**  
Windtex®

**fabric:**  
Rifrangente

**fabric:**  
Kevlar®

# COTTON CAP

## The classic

Cotton underhelmet cap with visor. Fully customisable with silk-screen printing.

COD. PCACOTU  
MIN. 150 PZ.

# THINK CAP

## The modern

Light and practical, this is the summer under-helmet made of quick-drying UV-resistant, breathable micro-fibre with a flat visor.

COD. PCACAPU  
MIN. 10 PZ.


# BANDANA

## The pirate

Summer headband in lightweight breathable fabric. Fully customisable.

COD. PCABANU  
MIN. 10 PZ.



 fabric:  
Cotone



 fabric:  
Bicimania®



 fabric:  
Bicimania®

# DIZZY

## The factotum

Sixteen uses in one for Dizzy. From under-helmet to cap, from moisture-wicking band to neckerchief and then, balaclava, hood, wristband, scarf and hairband. Fully customisable.

COD. PCADIZU  
MIN. 10 PZ.

# MONVISO

## the multifunction

Practical tubular winter beanie with cord lock. Warm and soft, it is made of plush-lined fabric and insulates the head from the cold and wind. It can also be used as a neck warmer, shields the mouth from icy air and protects the throat from annoying irritation. Fully customisable.

COD. PCABERU  
MIN. 10 PZ.

# T4

## hothead

T4 is the indispensable, warm, close-fitting and comfortable headgear. Made of plush-lined fabric, it guarantees complete protection of the forehead thanks to the double headband. Fully customisable.

COD. PCAT4CU  
MIN. 10 PZ.



fabric:  
Sanremo®



fabric:  
Blizzard®



fabric:  
Blizzard®

# AIRGAP

## Comfort and convenience

The Airgap pad is made entirely of recycled yarns. Suitable for medium distances thanks to the construction of the surface fabric assembled with a structured hole foam that allows quick drying. Hight Impact Foam with progressive cut makes a comfortable and uniform seat.

Man 44 gr. - Woman 39 gr.  
USE OVER 4 HOURS.

COD. PFN0C0U  
MAN

COD. PFN0P0W  
WOMAN



 **padding:**  
hight impact foam

# NEWGEL

## Technique and performance

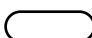
The Newgel pad is made entirely of recycled yarns. Suitable for medium to long distances thanks to the construction of the surface fabric built with a structure that allows quick drying. Hight Impact Foam with progressive cut and gel inserts absorbs impact and reduces vibration.

Man 60 gr. - Woman 57 gr.  
USE OVER 5 HOURS.

COD. PFN0D0U  
MAN

COD. PFN0Q0W  
WOMAN



 **padding:**  
hight impact foam

 **padding:**  
Gel

# BORMIO

## The pad for everyone

The Bormio pad is made entirely with recycled yarns. Suitable for long distances, made with a 3D structure that allows quick drying. The combination of Hight Impact Foam and gel allows high impact absorption and reduces vibration.

Man 77 gr. - Woman 55 gr.  
USE OVER 6 HOURS.

COD. PFN0E0U  
MAN

COD. PFN0R0W  
WOMAN

# SKY

## The most loved by the Pros

It's a PAD created with the Skiving technique that guarantees well-being and ergonomic adaptation to the body. The Skiving technique, progressive in all areas of support, minimizes friction at critical points eliminating discomfort and redness. The Breath Tech construction, perforated cut creates a suction effect so as to extract sweating and create ventilation.

Man 57 gr. - Woman 49 gr.  
USE OVER 7 HOURS.

COD. PFN0F0U  
MAN

COD. PFN0S0W  
WOMAN

# TRIPAD

## The essential minimal

TRIPAD was created for triathlon, single density foam or gel leotards. It offers excellent protection in the ischial area, while the high elasticity of the surface fabric ensures maximum freedom of movement ensuring a perfect fit.

FOAM 19 gr. - Gel 49 gr.

COD. PFN0H0U  
TRIATHLON

COD. PFN0I0U  
TRIATHLON GEL



 padding:  
hight impact foam

 padding:  
Gel



 padding:  
hight impact foam



 padding:  
hight impact foam

 padding:  
Gel



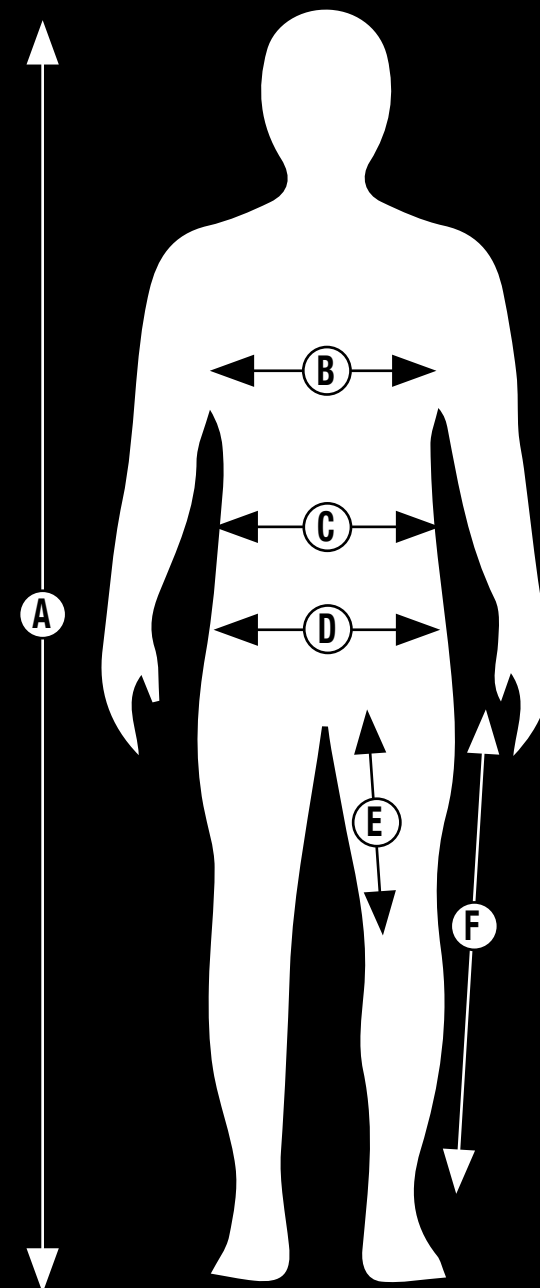
# GUIDA ALLE MISURE E VESTIBILITÀ - SIZE AND FIT GUIDE

UOMO / MAN  
MAGLIA / JERSEY

	<b>A</b> ALTEZZA / HEIGHT / TAILLE		<b>B</b> TORACE / CHEST / TORCE		<b>C</b> VITA / WAIST / VENTRE		<b>D</b> BACINO / PELVIS / HANCHES	
	CM	INCHES	CM	INCHES	CM	INCHES	CM	INCHES
<b>XS</b>	150-159	59-62.5	92	36.2	76	30	92	36.2
<b>S</b>	160-169	63-66.5	96	37.7	80	31.4	96	37.7
<b>M</b>	170-179	67-70.4	100	39.3	84	33	100	39.3
<b>L</b>	180-185	70.8-72.8	105	41.3	88	34.6	104	40.9
<b>XL</b>	186-190	73.2-74.8	110	43.3	93	36.6	109	42.9
<b>2XL</b>	191-195	75.2-76.7	115	45.2	98	38.5	114	44.8
<b>3XL</b>	-	-	120	47.2	103	40.5	119	46.8
<b>4XL</b>	-	-	125	49.2	108	42.5	124	48.8

## PANTALONCINI / SHORTS

	<b>A</b> ALTEZZA / HEIGHT / TAILLE		<b>C</b> VITA / WAIST / VENTRE		<b>E</b> LUNG. PANTALONE / SHORTS LONGUEUR DU CUISSARD		<b>F</b> LUNGHEZZA GAMBA / LEG LENGHT LONGUEUR DU CUISSARD LONG	
	CM	INCHES	CM	INCHES	CM	INCHES	CM	INCHES
<b>XS</b>	150-159	59-62.5	76	34.6	24-26	9.4-10.2	70	27.5
<b>S</b>	160-169	63-66.5	80	36.2	24-26	9.4-10.2	72	28.3
<b>M</b>	170-179	67-70.4	84	37.7	26-28	10.2-11	74	29.2
<b>L</b>	180-185	70.8-72.8	88	39.3	28-30	11-11.8	76	29.9
<b>XL</b>	186-190	73.2-74.8	93	41.3	28-30	11-11.8	78	30.7
<b>2XL</b>	191-195	75.2-76.7	98	43.3	28-32	11.8-12.6	80	31.5
<b>3XL</b>	-	-	103	45.2	28-32	11.8-12.6	82	32.2
<b>4XL</b>	-	-	108	47.2	28-32	11.8-12.6	82	32.2



DONNA / WOMAN  
MAGLIA / JERSEY

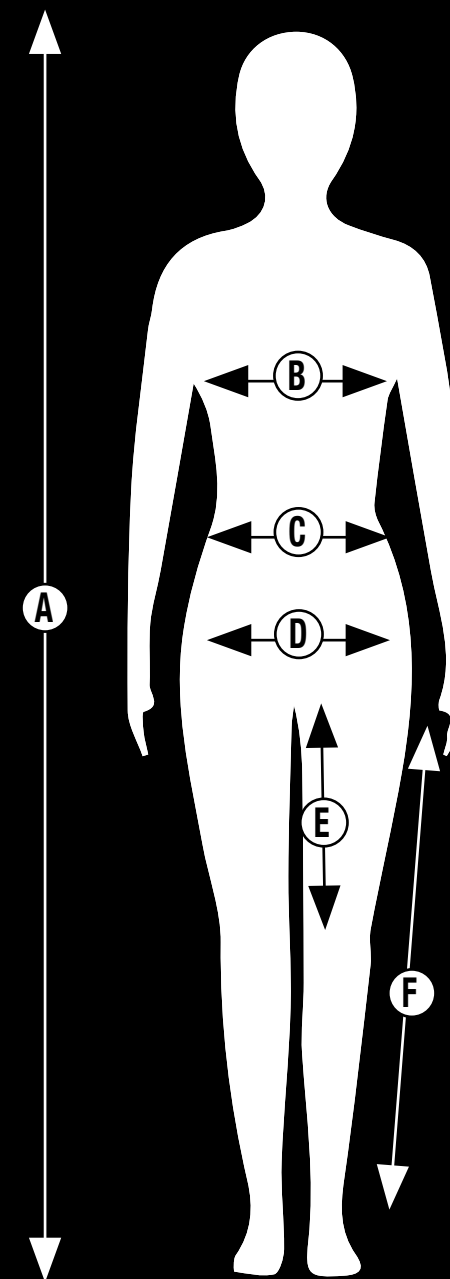
	A ALTEZZA / HEIGHT / TAILLE		B TORACE / CHEST / TORCE		C VITA / WAIST / VENTRE		D BACINO / PELVIS / HANCHES	
	CM	INCHES	CM	INCHES	CM	INCHES	CM	INCHES
<b>2XS</b>	156 - 159	61.4 - 62.6	74 - 79	29.1 - 31.1	57 - 62	22.4 - 24.4	80 - 88	31.5 - 34.6
<b>XS</b>	160	63	80	31.5	63 - 66	24.8 - 26	89 - 92	35 - 36.2
<b>S</b>	161 - 170	63.9 - 66.9	84	33	67 - 70	26.3 - 27.5	93 - 96	36.6 - 37.7
<b>M</b>	171 - 175	67.3 - 68.9	88	34.6	71 - 74	27.9 - 29.1	97 - 100	38.1 - 39.3
<b>L</b>	176 - 180	69.2 - 70.8	92	36.2	75 - 80	29.5 - 31.5	101 - 104	39.7 - 40.9
<b>XL</b>	-	-	96	37.8	79 - 82	31.1 - 32.3	105 - 108	41.3 - 42.5
<b>2XL</b>	-	-	100	39.3	83 - 86	32.6 - 33.8	109 - 112	42.9 - 44

PANTALONCINI / SHORTS

	A ALTEZZA / HEIGHT / TAILLE		C VITA / WAIST / VENTRE		E LUNG. PANTALONE / SHORTS LONGUEUR DU CUISSARD		F LUNGHEZZA GAMBA / LEG LENGHT LONGUEUR DU CUISSARD LONG	
	CM	INCHES	CM	INCHES	CM	INCHES	CM	INCHES
<b>2XS</b>	156 - 159	61.4 - 62.6	57 - 62	22.4 - 24.4	16 - 20	6.3 - 7.9	64	25.2
<b>XS</b>	160	63	63 - 66	24.8 - 26	21 - 23	8.2 - 9	66	26
<b>S</b>	161 - 170	63.9 - 66.9	67 - 70	26.3 - 27.5	21 - 23	8.2 - 9	68	26.7
<b>M</b>	171 - 175	67.3 - 68.9	71 - 74	27.9 - 29.1	23 - 25	9 - 9.8	70	27.5
<b>L</b>	176 - 180	69.2 - 70.8	75 - 80	29.5 - 31.5	23 - 25	9 - 9.8	72	28.3
<b>XL</b>	-	-	79 - 82	31.1 - 32.3	25 - 27	9.8 - 10.6	74	29.1
<b>2XL</b>	-	-	83 - 86	32.6 - 33.8	25 - 27	9.8 - 10.6	76	29.9

Alcuni dei nostri capi hanno una vestibilità aderente, consigliamo quindi di ordinare almeno una taglia più grande, qualora le misure del corpo fossero al limite o tra due taglie. Ogni modello è stato progettato per adattarsi in modo diverso e sfruttare le caratteristiche intrinseche dei materiali utilizzati. La taglia può variare anche in base alle preferenze personali.

Our garments run on the smaller side so if you are right on the border or between sizes, please order at least one size up. Each model was designed to fit differently to take advantage of the inherent characteristics of the materials used. Your size may also vary according to your personal preferences.



BIMBO / KID  
MAGLIA / JERSEY

ETA' / AGE	A ALTEZZA / HEIGHT / TAILLE		B TORACE / CHEST / TORCE		C VITA / WAIST / VENTRE		D BACINO / PELVIS / HANCHES	
	CM	INCHES	CM	INCHES	CM	INCHES	CM	INCHES
5/6	110 - 116	43.3 - 45.6	57 - 59	22.4 - 23.2	54 - 56	21.2 - 22	67 - 69	26.3 - 27.1
7/8	117 - 128	46 - 50.4	60 - 64	23.6 - 25.2	57 - 60	22.4 - 23.6	70 - 73	27.5 - 28.7
9/10	129 - 140	50.8 - 55.1	65 - 70	25.6 - 27.5	61 - 64	24.4 - 25.2	74 - 78	29 - 30.7
11/12	141 - 152	55.5 - 59.8	71 - 76	28 - 29.9	65 - 68	25.6 - 26.7	79 - 83	31.1 - 32.6

PANTALONCINI / SHORTS

	A ALTEZZA / HEIGHT / TAILLE		C VITA / WAIST / VENTRE		E LUNG. PANTALONE / SHORTS LONGUEUR DU CUISSARD		F LUNGHEZZA GAMBA / LEG LENGHT LONGUEUR DU CUISSARD LONG	
	CM	INCHES	CM	INCHES	CM	INCHES	CM	INCHES
5/6	110 - 116	43.3 - 45.6	57 - 59	22.4 - 23.2	67 - 69	26.3 - 27.1	18	7
7/8	117 - 128	46 - 50.4	60 - 64	23.6 - 25.2	70 - 73	27.5 - 28.7	19	7.4
9/10	129 - 140	50.8 - 55.1	65 - 70	25.6 - 27.5	74 - 78	29 - 30.7	20	7.8
11/12	141 - 152	55.5 - 59.8	71 - 76	28 - 29.9	79 - 83	31.1 - 32.6	21	8.2

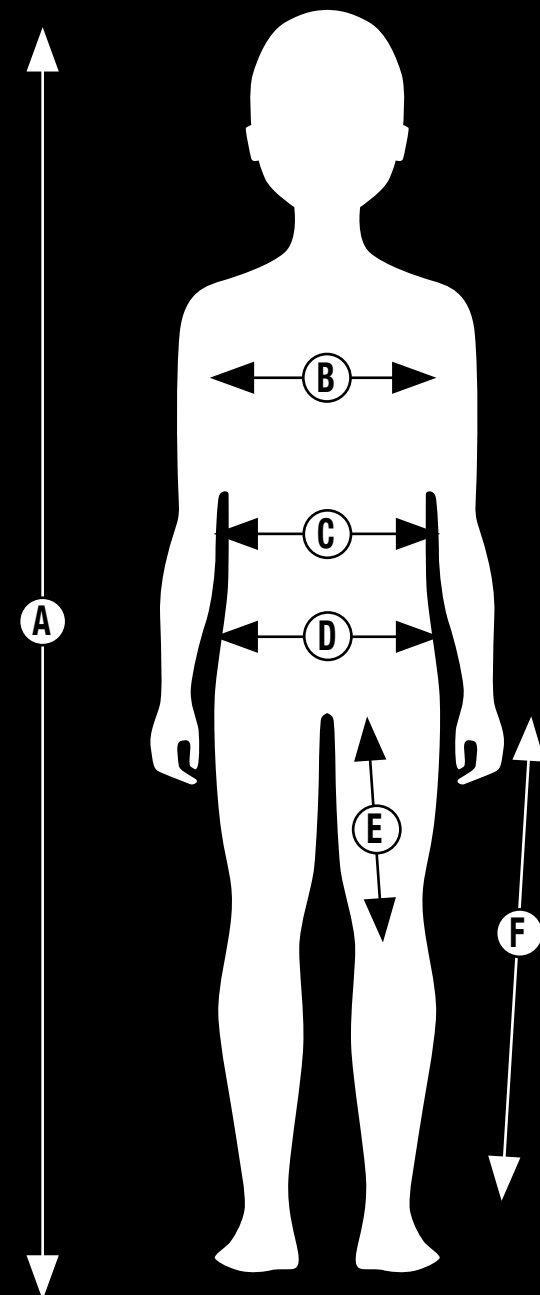
GUIDA ALLA MISURAZIONE DEL CORPO

TORACE: misura la circonferenza del petto nella parte più ampia tenendo le braccia abbassate.  
 VITA: misura la circonferenza nel punto più stretto del busto.  
 BACINO: misura la circonferenza dei fianchi nel punto più largo.

WAIST: measure the circumference of the waist in the tightest point.  
 CHEST: measure the circumference of the chest in the widest point with the arms down.  
 PELVIS: measure the circumference of the pelvis in the widest point.

Alcuni dei nostri capi hanno una vestibilità aderente, consigliamo quindi di ordinare almeno una taglia più grande, qualora le misure del corpo fossero al limite o tra due taglie. Ogni modello è stato progettato per adattarsi in modo diverso e sfruttare le caratteristiche intrinseche dei materiali utilizzati. La taglia può variare anche in base alle preferenze personali.

Our garments run on the smaller side so if you are right on the border or between sizes, please order at least one size up. Each model was designed to fit differently to take advantage of the inherent characteristics of the materials used. Your size may also vary according to your personal preferences.





**ROSTI**<sup>®</sup>

Via Piemonte 16  
24041 Brembate (BG)  
Tel. +39 035 802407  
Fax +39 035 4874437  
e-mail: info@rosti.it