



CHARLES & IVY

Planter Collection

Luxury Screen Planters

Charles & Ivy began with a simple observation:



Conventional fencing, gates and screening is unremarkable, dull and maintenance-heavy.

We made it our mission to **create a stylish, durable and a low-maintenance modular fencing and gate system.**

As our ideas developed, we saw the potential for our products to **further elevate outdoor** spaces.

We have designed a **modular fencing and gate system** which offers a broad range of creative, beautiful and long-lasting options for your garden.

Our fencing products are **exclusive and designed by Charles & Ivy.**



Luxury
Screen
Planters



Screen Planters

CHARLES & IVY

Transform your home and garden with our luxurious and no-maintenance composite products.

Our easy-to-install products not only add a personal touch to your outdoor space, but also provide an eco-friendly fencing solution.

Made with a mix of recycled plastics, our products use the equivalent of up to 80 plastic bottles per fence slat.

Give your home a luxury upgrade with exclusive Charles & Ivy designs.



Weather
Proof



No
Maintenance



UV
Protected



Never Paint
Again



Made With
Recycled
Plastic



Eco
Friendly



Easy
To Install



Designed by
Charles & Ivy



15 Year
Warranty

www.charlesandivy.co.uk

Designed, built and delivered by Charles & Ivy

Charles & Ivy offers the world's largest selection of premium fencing and gates. We manufacture and assemble the majority of our products in the United Kingdom.

We have a large team of product specialists available 7 days a week online, on the phone or at our showrooms to answer and assist with any of your product queries.

All of our guaranteed products are available to buy on our website and held in stock. We will deliver all items using our own in house logistics team between 1 and 7 days after your order.



Rated Excellent



★ Trustpilot

Planter collection

Elevate your outdoor space with our sophisticated, all-weather planters. Expertly crafted from durable poly-stone and recycled composite, these planters boast both beauty and longevity. Choose from two sophisticated colour options, Light and Dark Grey, adding a touch of elegance to any area.

Available in 5 sizes, each planter can be paired with one of our ornate screens, offered in 3 contrasting colours.

Position the decorative screen at the back or in the centre for versatile planting options, and upgrade with our optional wheeled base, complete with lockable wheels for stability. Embrace privacy, practicality and style with our all-weather planters.



Windsor Medium Dark Grey Planter with Pebble Screen in Black



Plumley Medium Dark Grey Planter Base



Planter Collections

Discover our Planter collections

All of our planter collections are available in 2 colours, 4 designs, 5 sizes
and can be paired with any of our Decorative Screens.

Plumley Collection



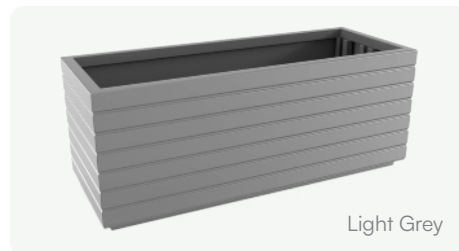
Windsor Collection



Discover our Planter collections

All of our planter collections are available in 2 colours, 4 designs, 5 sizes
and can be paired with any of our Decorative Screens.

Vertu Collection



Hoxton Collection



Eco-Friendly

Charles and Ivy are the UK's largest composite fencing supplier, known for our innovative designs and commitment to sustainability. We produce a range of eco-friendly composite products such as fencing, gates, planters, decorative screens and more, made from recycled plastic materials.

We pride ourselves on using recycled plastic to create high-quality, long-lasting products that are both functional and good for the environment. By diverting plastic waste from landfills and reducing the demand for new plastic, we are able to make a positive impact on the planet, whilst also meeting the needs of our customers. We are dedicated to designing and producing sustainable solutions that are both beautiful and durable.

Benefits of our Planters



Weatherproof

Our tough composite resists rot, mould, and has in-built UV protection ensuring the colour will not fade.



No Maintenance

Our composite is easy to clean and you'll never need to paint, treat or stain.



Adaptable

All of our planters come with the option of adding a lockable wheeled base.



Decorative Screen Finish

Our fully weatherproof 18mm screens feature a light wood grained finish on both sides.



Eco-friendly

All of our planters are eco-friendly and manufactured using recycled plastics.



Explore our Planters

Scan the QR code for more inspiration.

How to assemble our planters

Our planters have been designed for straightforward installation by a confident DIY-er or handyman. Watch our helpful videos on our website for step-by-step guidance.



Scan the QR
code on
How To Install.

Decorative screen designs

All of our planters can be paired with any of our 20 Decorative Screen designs in 3 colours and 5 sizes.



Alnara



Ambar



Blossom



Cubed



Feather



Habitat



Heritage



Hive



Narwa



Nazira



Palm



Pebble



Plume



Prism



Twilight



Windsor



Eden



Malawi

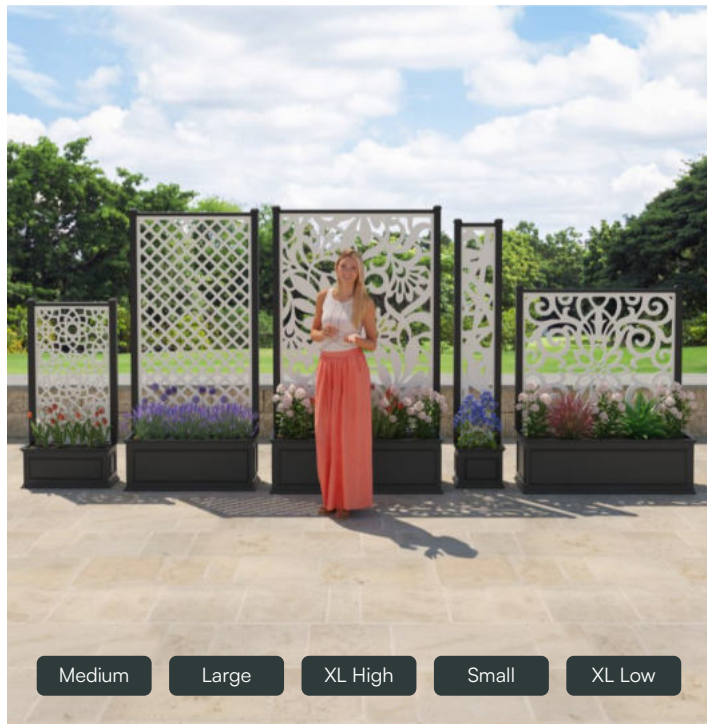


Petal



Aspen

Planter Sizes



Planter Dimensions

Small Planter

Width **37cm** x Depth **30cm** x Height **30cm**
With Screen Height: **195cm**

Medium Planter

Width **67cm** x Depth **30cm** x Height **30cm**
With Screen Height: **135cm**

Large Planter

Width **97cm** x Depth **38cm** x Height **38cm**
With Screen Height: **203cm**

Extra Large Low Planter

Width **127cm** x Depth **46cm** x Height **40cm**
With Screen Height: **145cm**

Extra Large High Planter

Width **127cm** x Depth **46cm** x Height **40cm**
With Screen Height: **205cm**

Do you need to make your planters moveable?

Enhance the versatility and privacy of your planters with the optional wheeled base. Effortlessly move your planters into your desired location with ease and enjoy peace of mind with the lockable wheels to ensure stability and security.



Explore our
Planter Collections

Manufactured for you in Great Britain

Charles & Ivy can offer a bespoke custom design service, tailored to meet your specific design. We offer a unique and personalised experience that is tailored to your preferences. Our custom-made products can be designed and fabricated to meet your requirements for size, style and functionality.

If you have any design ideas that you cannot find available on our website, please contact us to speak with one of our product specialists to discuss your design ideas.

Charles & Ivy products are built to the highest standards of quality and craftsmanship.



FAQ's

What are your planters made from?

The planters are made from all-weather Polystone and the planter frames are made from recycled composite. The screens are also made from all-weather recycled composite. All the components on the planters are fully weatherproof, highly durable and require no maintenance.

Do your planters have drainage holes?

Yes, there are two drainage holes with removable bungs in each planter base.

Are your products easy to install?

All of our products are simple to install, please find our step-by-step video guides on our website.

What height is the wheeled base?

The wheeled base is 30mm, wheels are also lockable to ensure no movement.

Is there a warranty?

We're confident in the quality and durability of our products. That's why we offer an industry-leading 15 years warranty.

Can you buy the planter base without the decorative screen?

Yes, all of our planter bases are sold with or without the screen option.



Luxury
Screen
Planters



Screen Planters

CHARLES & IVY



Planters

Sizes comparison - Medium, Large, XL High, Small, XL Low



&I Planter Collection

Contact

We have assembled a team of highly skilled and knowledgeable product specialists, poised to assist you with any inquiries you may have. If you are seeking technical advice, inspiration, or guidance with design ideas, our team is well-equipped to meet your needs with expertise and experience.

Opening Times
(Showrooms):

Monday to Saturday
9am to 5pm
Sunday 10am to 4pm

Telephone

0161 884 4180

Monday to Sunday
9am to 9pm

Warehouse Address

**2 Opus Close, Carrington,
Manchester, M31 4RQ**

Email

info@charlesandivy.co.uk

Showroom Address (South)

**Imex Center, 575-599
Maxted Road, Hemel Hempstead, HP2 7DX**



Visit our
Website

Rated Excellent



★ Trustpilot

CHARLES & IVY

Start your garden journey today at:

charlesandivy.co.uk