

C&I



InsuSlat™

CHARLES & IVY



Mid Grey
240cm x 60cm InsuSlat™ Panel

OUR VISION

Charles & Ivy began with a simple observation; we made it our mission to transform blank, dull spaces into something truly extraordinary. As our ideas developed, we saw the potential for our products to elevate indoor spaces.

We have designed a range of luxurious indoor wooden Slat Wall Panels which offer a broad range of creative, beautiful and long-lasting options for your home.

Dark Walnut
240cm x 60cm InsuSlat™ Panel
With LED LumiSlat™



WHY CHOOSE US

Transform your home with our luxurious and maintenance free wooden InsuSlat™ Wall Panelling.

Our easy to install wooden slats not only add a personal touch to your interior space, but provide an eco-friendly and insulating element to your home. Unleash your creativity and make your home truly yours with our versatile and practical InsuSlat™ Wall Panels.



DESIGNED FOR ELEGANCE

Our panels are the epitome of sophistication. Crafted with meticulous attention to detail, they not only elevate the aesthetics of your space but also serve as a functional addition to enhance comfort.

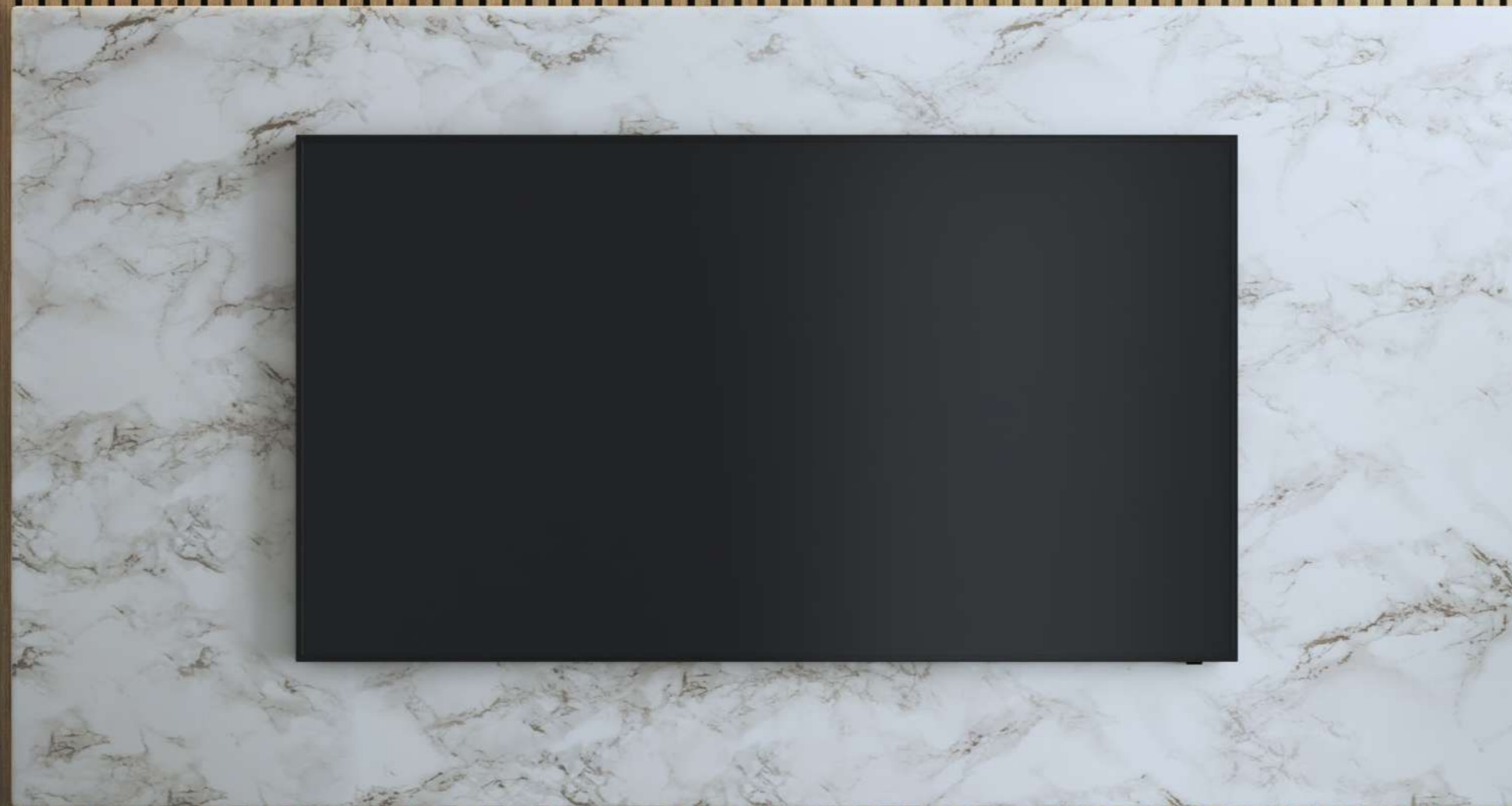
The sleek Wood Veneer or Antique Veneer finish options offer a time-less charm that seamlessly complements various interior styles, ensuring a perfect match for your vision.

AT YOUR SERVICE

Charles & Ivy have a large team of product specialists available 7 days a week online, on the phone and at our Showrooms; all on hand to answer and assist with any questions or product queries, or to help provide some inspiration of what style could suit your interior space.

All of our guaranteed products are available to buy on our website and held in stock. We will deliver all items using our own in-house logistics team.

Antique Tiffany
120cm x 60cm InsuSlat™ Panel
With Antique Tiffany Top Trim Batten



INSTANT TRANSFORMATION

Are you looking to transform your living environment into a luxury oasis of comfort and style? Look no further than our wooden InsuSlat™ panels, meticulously designed to provide the finishing touch to any setting while delivering exceptional insulation and acoustic benefits. Our panels are easily installed in 3 easy steps by following our instructional guide.

Natural Oak
240cm x 60cm InsuSlat™ Panel

YOUR
HOME



The nice thing about home, is that it feels good to
leave but it feels even *better* to come back.



Antique Stone
60cm x 60cm InsuSlat™ Panel

INSULATE YOUR HOME

DID YOU KNOW...

Approximately 35% of the heat in your house escapes through your walls. Not only are you transforming your home with our InsuSlat™ wall panels, but you are significantly reducing heat loss, resulting in lower energy bills.

ABSORB THE SOUND

Our InsuSlat™ wall panels have been tested and approved with the sound absorption coefficient (A) meaning they are the perfect solution to address any sound echo or reverberation.

With InsuSlat™ wall panels, you don't just get style; you get substance. These panels are engineered to provide exceptional insulation and acoustic performance. Say goodbye to unwanted noise disturbances and hello to a quieter, more serene atmosphere.

Hear how our acoustic InsuSlat™ panels breaks and absorbs the sound waves for yourself by scanning the QR code below.



STRAIGHT FORWARD INSTALLATION

Transforming your space with our InsuSlat™ panels is a hassle-free endeavor. Our simple 3-step installation process ensures that you can enjoy the benefits of these panels without the need for extensive expertise. Whether it's your home or your business, you can revamp your surroundings with ease.

How to install InsuSlat™

TOOLS YOU WILL NEED

- Screwdriver (if screwing to wall)
- Tape Measure
- Fine-toothed Saw (if cutting down)
- Stanley Knife
- Application Gun (if applying grab adhesive)

FIXINGS REQUIRED

- For bonding to wall - Grab adhesive and application gun.
- For screwing to wall (through felt backing) - Black DryWall screws, 35mm x 3.5mm x (with suitable rawl plugs)

STEPS

1. Measure area where panels are to be fitted.
2. Cut panels to length where required with a fine-toothed handsaw, when fixing your last panel, carefully cut to your desired width using a sharp blade (through felt backing) or fine tooth saw (through wooden slats).
3. Fix InsuSlat™ into place using your chosen fixing method.

If you have any other installation questions, please call our product specialists via phone, chat or email. Lines open 9am to 7pm, 7 days a week.





Mid Grey
240cm x 60cm InsuSlat™ Panels with LED LumiSlatt™

How to install InsuSlat™ with Top Trim Batten

Our Top Trim Battens bond directly to the wall with grab adhesive and must be fixed into place before InsuSlat™ panels.

TOOLS YOU WILL NEED

Tape Measure
Fine-toothed Saw (if cutting down)
Application Gun (if applying grab adhesive)

FIXINGS REQUIRED

Grab adhesive and application gun.

STEPS

1. Measure length where top batten is to be fitted.
2. Cut batten to length with fine toothed saw.
3. Fix into place with grab adhesive.

How to install InsuSlat™ with Top Trim LumiSlatt™

When fixing our LED top trim option, this MUST be fitted before InsuSlat as LED power supply wire is fitted behind InsuSlat™ panels.

FIXINGS REQUIRED

Grab adhesive and application gun.

STEPS

1. Measure area where panels are to be fitted.
2. Cut top trim to length with fine toothed saw, (please note, LED light can be cut with scissors at 25mm intervals as per marked on LED light strip with scissors.
3. Fix into place with grab adhesive.
4. Ensure power supply wires are in place and fix InsuSlat panels over wires.
5. Connect wires to plug in power supply.

FIND YOUR
**PERFECT
MATCH**

Create your own unique, luxury space with our individual wooden InsuSlat™ Wall Panels. You can mix & match different sizes to suit your imagination and interior style to evoke a boutique hotel, luxurious home or restaurant that oozes elegance.

Our InsuSlat™ Wall Panels can be matched together horizontally or vertically, to create a unique feature for your individual interior style.



Dark Grey
60cm x 60cm
Staggered InsuSlat™ Panel



COLLECTIONS

Quality is at the heart of our InsuSlat™ panels. Crafted from premium materials, they are built to withstand the test of time, ensuring that your investment in luxury lasts for years to come. You can trust in the durability and longevity of our products.

VENEER



White Oak



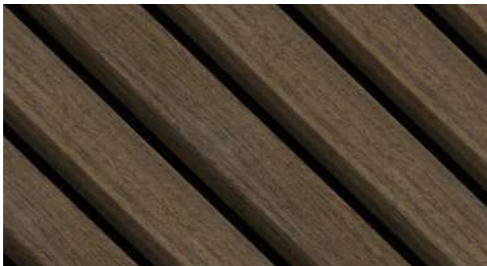
Natural Oak



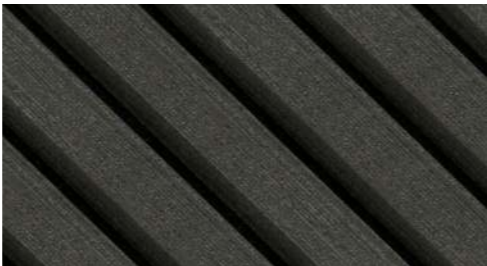
Light Walnut



Mid Walnut



Dark Walnut



Dark Grey



Mid Grey

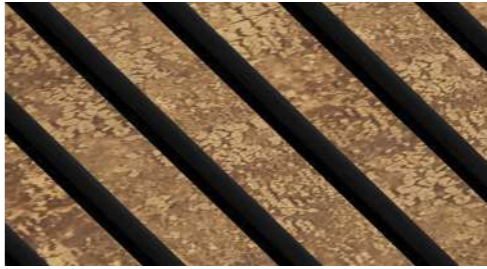


Light Grey

ANTIQUÉ VENEER



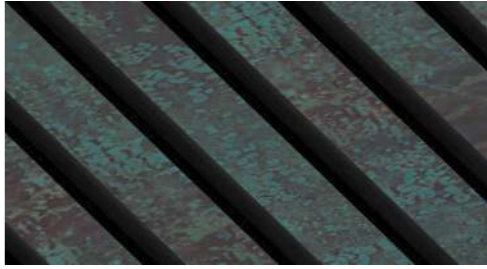
Antique Stone



Antique Rust



Antique Grey



Antique Tiffany

SAMPLES

If you would like a closer look at our InsuSlat™ collections, scan the below QR code to order your sample pack.





Mid Walnut
60cm x 60cm
Staggered InsuSlat™ Panels

Antique Rust
240cm x 60cm InsuSlat® Panels



CREATE
YOUR
DREAM



Turning the pages of your imagination into a
reality you can live in.

Light Walnut
120cm x 60cm InsuSlat™ Panels
with LED LumiSlat™



LED LumiSlat™

Introducing our brand new LED LumiSlat™; the perfect way to bring light and life to your InsuSlat™ Wall Panels.

Add our newly designed top trim LumiSlat™ to complete your transformation. An LED lighting solution which creates the perfect ambience and soft glow in any room of your home for a superior finish.

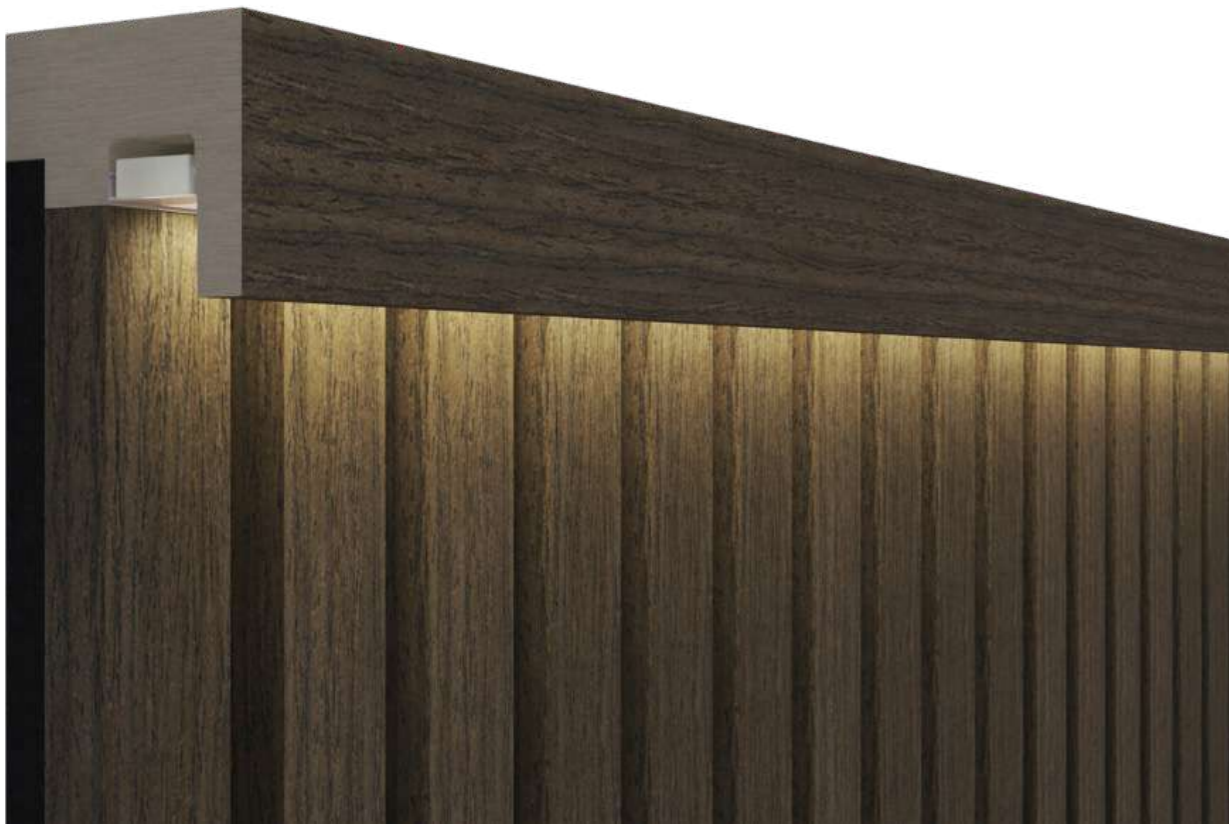
Available to plug in, our top trim LED LumiSlat™ can be cut every 2.5cm to suit your required length enabling the perfect method to create a totally unique and bespoke look to your transformation.

Our top trim LED LumiSlat™ can also be hard-wired in depending on the requirements of your project. Light temperature of 3000k.

WE ARE
LIGHTING THE WAY

EMBRACE AMBIANCE

For those seeking an extra touch of luxury and ambiance, consider our optional top trim LumiSlat™ feature. These LED battens infuse warmth and create a captivating atmosphere in any room, adding that extra layer of sophistication and comfort.



Dark Walnut
with LED LumiSlat™



Light Grey
240cm x 60cm with LED LumiSlat™



Mid Grey
120cm x 60cm InsuSlat™ Panels
with LED LumiSlat™



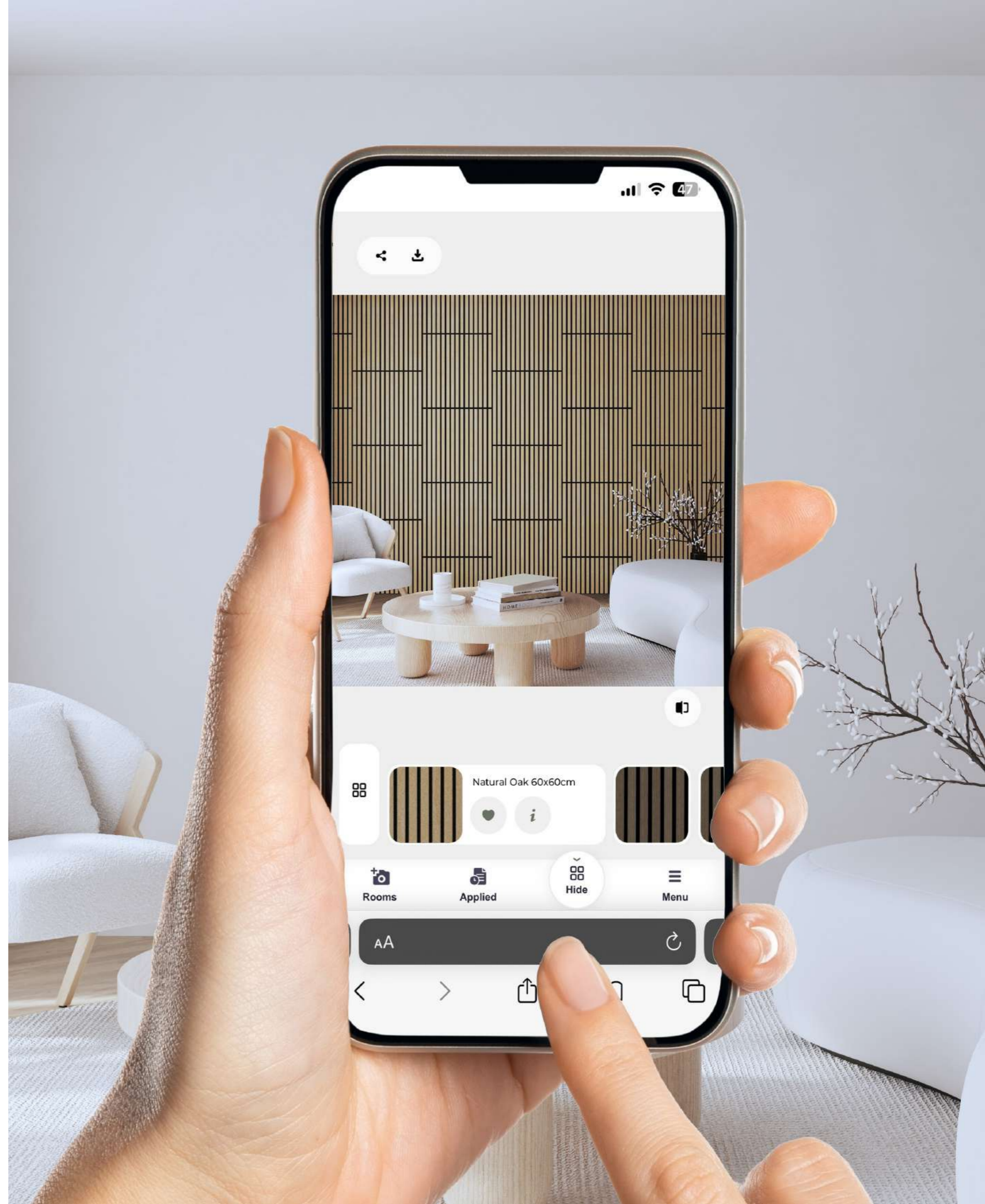
WE CARE
ABOUT THE
ENVIRONMENT

We pride ourselves on using recycled materials where possible to create high-quality, long-lasting products that are both functional and beneficial for the environment.

The acoustic felt backing on our wooden InsuSlat™ Wall Panels is made up from 45% recycled materials.

VISUALISE YOUR SPACE

If you're looking for more inspiration or want to visualise how our premium InsuSlat™ will look in your own space scan the QR code below.



TECHNICAL SPECIFICATIONS



Full Wall Max

This is the largest InsuSlat™ available, perfect for homes with higher ceilings. One 300cm x 60cm panel. Total pack size: 300cm Height x 60cm Width = 1.8sq/m



Half Wall

Best suited for creating a half wall look, this InsuSlat™ is perfect for bringing style to your home. Two 120cm x 60cm panels. Total pack size: 120cm Height x 120cm Width panel = 1.44sq/m



Full Wall

The second largest InsuSlat™ providing a ceiling to floor finish in any room. One 240cm x 60cm panel. Total pack size: 240cm Height x 60cm Width = 1.44sq/m



Square

Fixing this InsuSlat™ in alternating directions creates an opulent look. Each pack contains: Four 60cm x 60cm panels. Total pack size: 120cm Height x 120cm Width = 1.44sq/m



Staggered

Pairing this size InsuSlat™ with the 60 x 60cm creates a staggered look to any wall within your home. Each pack contains: Two 60cm x 30cm panels & seven 60cm x 60cm panels. Total pack size: 120cm Height x 120cm Width = 1.44sq/m

FAQs

What is InsuSlat™ made from?

Our InsuSlat™ is made of a black acoustic felt (made of recycled plastics). The slats have an MDF core with a wood veneer surface.

Is the InsuSlat™ felt breathable?

Yes, the acoustic felt is breathable.

Can I cut InsuSlat™ to specific sizes?

Yes, InsuSlat™ Wall Panels are simple to cut with a small saw or safety knife.

What are the individual InsuSlat™ dimensions?

The InsuSlat™ dimensions are 17mm(width) - 8mm(depth) - 13mm gap.

How many InsuSlat™ Wall Panels do I need for my project?

Head to www.charlesandivy.co.uk where you'll find a calculator to generate how many packs of InsuSlat™ you'll need. Please ensure to add 10% to your order to allow for off cuts.

Are the InsuSlat™ colours consistent?

Yes, all InsuSlat™ Wall Panels undergo a strict quality control process to ensure they arrive to you in perfect condition, time after time.

Can InsuSlat™ Wall Panels be mixed and matched together?

Yes, all of our InsuSlat™ Wall Panels can be mixed to create your own design layout. All InsuSlat™ can be installed horizontally or vertically.

How do InsuSlat™ Wall Panels arrive?

The InsuSlat™ Wall Panels are delivered free of charge (subject to minimum spend) by our own in-house delivery team. This ensures prompt and safe delivery.

Can InsuSlat™ be used in a bathroom or kitchen?

InsuSlat™ are compatible in these areas so long as they are not in direct contact with water or heat. We advise using a water repellent sealant upon installation.

Can I create a hidden door with InsuSlat™?

Yes – this is a common use for InsuSlat™.

What surfaces can I install InsuSlat™ onto?

You can install InsuSlat™ on most surfaces including brick, concrete and plasterboard. To achieve best results we advise that the surface you apply the InsuSlat™ onto is as flat as possible.

Is mounting InsuSlat™ around curved corners possible?

Yes, InsuSlat™ is flexible enough to bend around small curves.

What type of screws do I need to install?

We recommend black drywall screws and wall plugs if your desired method is to screw InsuSlat™ to your wall.

Can grab adhesive be used to install InsuSlat™?

Yes, InsuSlat™ can also be installed with any good household named grab adhesives.

How many InsuSlat come in a pack?

Staggered - Each pack contains: Two 60cm x 30cm panels & seven 60cm x 60cm panels. Total pack size: 120cm Height x 120cm Width = 1.44sq/m

Square - Each pack contains: Four 60cm x 60cm panels
Total pack size: 120cm Height x 120cm Width = 1.44sq/m

Half Height Wall - Each pack contains: Two 120cm x 60cm panels. Total pack size: 120cm Height x 120cm Width panel = 1.44sq/m

Full Height Wall - Each pack contains: One 240cm x 60cm panel. Total pack size: 240cm Height x 60cm Width = 1.44sq/m

Full Height Wall Max - Each pack contains: One 300cm x 60cm panel. Total pack size: 300cm Height x 60cm Width = 1.8sq/m

Is LumiSlat™ easy to install?

Yes, LumiSlat™ is simple to install using grab adhesive. The LED is plug in, so requires no wiring. Please ensure that LumiSlat™ is installed before InsuSlat™. This is because the InsuSlat™ is placed over any™ LED wiring.

Can LumiSlat™ be trimmed for perfect installation?

Yes, our LumiSlat™ can be cut every 2.5cm, the cut locations are marked on the LED lighting.

Is LumiSlat™ plug in?

Yes, our LED LumiSlat™ top batten is plug in. You will receive a transformer plug in but they can also be hard wired by a qualified electrician.

How long is the LumiSlat™ power lead?

The LumiSlat™ power lead is 6 meters long. The LumiSlat™ LED light colour is 3000K.

Is LumiSlat™ CE certified?

Yes, LumiSlat™ is CE certified.

What is your returns policy?

You can return any unused and unpacked panels within 30 days of delivery. There is a collection fee of £40.



White Oak
120cm x 60cm InsuSlat™ Panels
With LED LumiSlat™ Black Top Batten



Light Walnut
60cm x 60cm InsuSlat™ Panel

CONTACT US

Showroom Opening Times

Monday - Saturday
9am to 5pm

Sunday
10am to 4pm

South Showroom: Imex Centre, 575-599
Maxted Road, Hemel Hempstead, HP2 7DX

North Showroom: 2 Opus Close, Carrington,
Manchester, M31 4RQ

Email: info@charlesandivy.co.uk
Telephone: 0161 8434 950

Elevate your space to new heights of luxury and functionality with our InsuSlat™ Panels. Contact us today to learn more about how you can transform your environment into a masterpiece of comfort and style. Experience the perfect blend of aesthetics and functionality with InsuSlat™.



Find us at
www.charlesandivy.co.uk