



# CHARLES & IVY

## Aluminium Collection

Luxury Composite Fencing

Charles & Ivy began with a simple observation:



Conventional fencing, gates and screening is unremarkable, dull and maintenance-heavy.

We made it our mission to **create a stylish, durable and a low-maintenance modular fencing and gate system.**

As our ideas developed, we saw the potential for our products to **further elevate outdoor** spaces.

We have designed a **modular fencing and gate system** which offers a broad range of creative, beautiful and long-lasting options for your garden.

Our fencing products are **exclusive and designed by Charles & Ivy.**



Luxury  
Fencing  
For Life

Aluminium Collection

CHARLES & IVY

# Transform your home and garden with our luxurious and no-maintenance composite products.

Our easy-to-install products not only add a personal touch to your outdoor space, but also provide an eco-friendly fencing solution.

Made with a mix of recycled plastics, our products use the equivalent of up to 80 plastic bottles per fence slat.

Give your home a luxury upgrade with exclusive Charles & Ivy designs.



Weather  
Proof



No  
Maintenance



UV  
Protected



Never Paint  
Again



Made With  
Recycled  
Plastic



Eco  
Friendly



Easy  
To Install



Designed by  
Charles & Ivy



15 Year  
Warranty

[www.charlesandivy.co.uk](http://www.charlesandivy.co.uk)

## Designed, built and delivered by Charles & Ivy

Charles & Ivy offers the world's largest selection of premium fencing and gates. We manufacture and assemble the majority of our products in the United Kingdom.

We have a large team of product specialists available 7 days a week online, on the phone or at our showrooms to answer and assist with any of your product queries.

All of our guaranteed products are available to buy on our website and held in stock. We will deliver all items using our own in house logistics team between 1 and 7 days after your order.



Rated Excellent



★ Trustpilot



## Aluminium fencing collection

Achieve a unique and distinctive look with Charles & Ivy's aluminium fencing collection. We have 4 different ranges available in heights from 30cm to 210cm.

All aluminium products are durable, marine grade and finished with a high quality powder coating and are available in 2 colours (black and dark grey).

All fencing can be matched with our Decorative Screens and are also available to match with our Pedestrian and Driveway Gates for a cohesive look. Charles & Ivy products not only add visual appeal and value to your property, but also enhances safety and privacy.



Albany Fence Slat in Gate and Fencing



Post base plate cover



Salome Fence Slat in Gate and Fencing

## Discover our aluminium fence colours

All of our aluminium fence designs have a thickness of 18mm and are available in 2 colours and 4 designs and can be easily installed into our aluminium or composite posts (30cm to 210cm in height) or your own concrete posts.

### Toledo Collection



Toledo Black

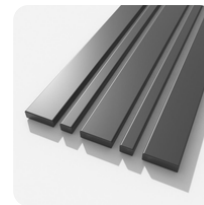


Toledo Dark Grey

### Albany Collection



Albany Black

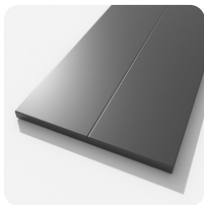


Albany Dark Grey

### Salone Collection



Salone Black

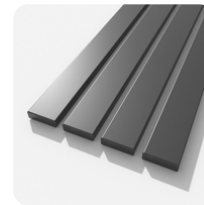


Salone Dark Grey

### Aria Collection



Aria Black



Aria Dark Grey

## Add a matching pedestrian gate to your aluminium fence

Our Aluminium Pedestrian and Driveway Gates are designed to complement our range of Aluminium Fences. All gates can be paired with any of our Aluminium fencing collections and are available in 2 colours.

Gates are available from height 94cm to 184cm and can be customised to fit your space up to a width of 120cm.

Gates are crafted using marine-grade powder-coated aluminum frames and aluminium slats. Our gates are not only secure but offer privacy whilst adding aesthetic value to your property. All gates come with lockable door handles (no door handles on Driveway Gates when used with automation).



Explore our  
Gate Collections





## Add a matching driveway gate to your aluminium fence

Our Aluminium Driveway Gates are designed to complement our range of Aluminium Fences. All gates can be paired with any of our Aluminium fencing collections and are available in 2 colours. Gates are custom made to fit your space from a width of 180cm to 390cm and a height of 184cm.

Gates are crafted using marine-grade powder-coated aluminum frames and aluminium slats. Our gates are not only secure but offer privacy whilst adding aesthetic value to your property. All gates come with lockable door handles (no door handles on Driveway Gates when used with automation).



Explore  
our Gate  
Collections

# Eco-Friendly

Charles and Ivy are the UK's largest composite fencing supplier, known for our innovative designs and commitment to sustainability. We produce a range of eco-friendly composite products such as fencing, gates, planters, decorative screens and more, made from recycled plastic materials.

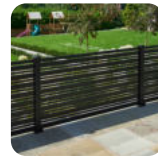
We pride ourselves on using recycled plastic to create high-quality, long-lasting products that are both functional and good for the environment. By diverting plastic waste from landfills and reducing the demand for new plastic, we are able to make a positive impact on the planet, whilst also meeting the needs of our customers. We are dedicated to designing and producing sustainable solutions that are both beautiful and durable

## Benefits of aluminium slatted fencing



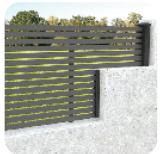
### Weatherproof

Our tough composite resists rot, mould, and has in-built UV protection ensuring the colour will not fade.



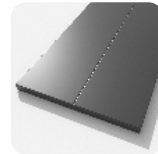
### No Maintenance

Our composite is easy to clean and you'll never need to paint, treat or stain.



### Adaptable

You can cut our composite products to the size you need without compromising the structural integrity.



### Slat Finish

Our fully weatherproof 18mm thick slats feature a tough matte, powder coated finish.



### Explore our Aluminium Fencing

Scan the QR code for more inspiration.

## Fence post types



### Concrete Posts

When fitting our fencing into your existing concrete posts, we supply you with side channels, top and bottom cappings, slats of your choice and brackets to secure in place. The channel and cappings are in black. The heights are available from 30cm to 180cm.



### Composite Posts

Each composite post comes with a post cap, base plate, base plate cover and fixing kit to suit where fencing is situated. The heights available are from 38cm to 270cm. The post heights above 210cm are for use when sunken into the ground. The posts can be used for both straight runs and corners. Posts are available in black or to match your slat colour.



### Aluminium Posts

Each aluminium post comes with a post cap, base plate, base plate cover and fixing kit to suit where fencing is situated. The heights available are from 38cm to 270cm. The post heights above 210cm are for use when sunken into the ground. The posts can be used for both straight runs and corners. Posts are available in black.



## How to install fencing

There are several ways to install fencing, and the specific method you choose will depend on the type of fence you are installing, the terrain and conditions of the installation site, and your personal preferences and skills. Here are the three most common methods for installing fencing.

**Our products have been designed for straightforward installation by a confident DIY-er or handyman.**

Watch our helpful videos on our website for step-by-step guidance.



Solid ground  
Installation



Fix to a wooden  
surface Installation



Buried into the  
ground Installation



Scan the QR code  
on How To Install



# Aluminium vs. Wood fencing



## Aluminium

## Wood

No Maintenance - Painting or Staining

Yes

No

Always Looks Brand New

Yes

No

Charles & Ivy Products Made From Recycled Materials

Yes

No

Durable and Rot Resistant

Yes

No

Customisable Sizing

Yes

No

Swell and Crack Resistant

Yes

No

Guaranteed For 15 Years

Yes

No

Matching Driveway & Pedestrian Gates Available

Yes

No

## Manufactured for you in Great Britain

Charles & Ivy can offer a bespoke custom design service, tailored to meet your specific design. We offer a unique and personalised experience that is tailored to your preferences. Our custom-made products can be designed and fabricated to meet your requirements for size, style and functionality.

If you have any design ideas that you cannot find available on our website, please contact us to speak with one of our product specialists to discuss your design ideas.

Charles & Ivy products are built to the highest standards of quality and craftsmanship.



## FAQ's

### **What are the posts made from?**

Our composite posts are made from a premium composite using recycled wood powder and plastics. Our highly durable posts are all fully weatherproof, UV protected and require no maintenance, painting, or staining. Our aluminium posts are manufactured using a high-grade aluminium, with an industry leading wall thickness of 1.8mm. All our metalwork is then powder coated to marine-grade standard, resulting in a robust and superior aesthetic finish.

### **What is the finish on your slats?**

The aluminium slats have a matte, powder coated finish, available in 2 colours.

### **Is there a warranty?**

We're confident in the quality and durability of our products. That's why we offer an industry-leading 15 years warranty.

### **Can your posts be sunk into the ground?**

Yes if chosen, our posts can be sunk into the ground, we recommend sinking any 37cm to 120cm posts, 30cm into the ground and any 150cm to 210cm posts 60cm into the ground.

### **Do I need need to order an additional post to finish the run of fencing?**

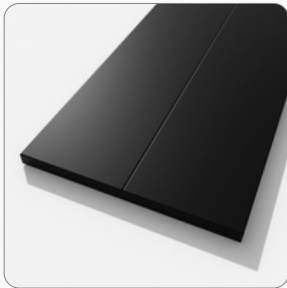
No, your end post is included in the price, you will see this added to your basket as 'Additional end post'.

### **Can I use the posts on corners?**

Yes, our posts have slots down each side so you can use them both on straights or corners. We also provide the blanking strips for the empty channels you won't be using.

If you have any other questions,  
please contact our product specialists  
who are available **7 days a week**.

## What are the product dimensions?



### Salone collection

Slat Dimension

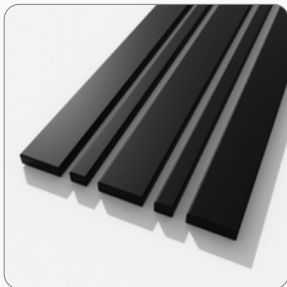
Width - 180cm  
Height - 15mm  
Depth - 18mm



### Toledo Collection

Slat Dimension

Gaps between each slat - 15mm  
Width - 180cm  
Height - 24mm  
Depth - 18mm



### Albany Collection

Slat Dimension

Gaps between each slat - 15mm  
Width - 180cm  
Height - 62mm  
Depth - 18mm

Width - 180cm	Width - 180cm
Height - 62mm	Height - 24mm
Depth - 18mm	Depth - 18mm



### Aria Collection

Slat Dimension

Gaps between each slat - 15mm  
Width - 180cm  
Height - 62mm  
Depth - 18mm





## Aluminium Collection

Albany aluminium in dark grey





 Aluminium Collection

## Contact

We have assembled a team of highly skilled and knowledgeable product specialists, poised to assist you with any inquiries you may have. If you are seeking technical advice, inspiration, or guidance with design ideas, our team is well-equipped to meet your needs with expertise and experience.

Opening Times  
(Showrooms):

Monday to Saturday  
**9am to 5pm**  
Sunday 10am to 4pm

Telephone

**0161 884 4180**

Monday to Sunday  
**9am to 9pm**

Warehouse Address

**2 Opus Close, Carrington,  
Manchester, M31 4RQ**

Email

**[info@charlesandivy.co.uk](mailto:info@charlesandivy.co.uk)**

Showroom Address (South)

**Imex Center, 575-599  
Maxted Road, Hemel Hempstead, HP2 7DX**



Visit our  
Website

Rated Excellent



★ Trustpilot

# CHARLES & IVY

Start your garden journey today at:

[charlesandivy.co.uk](https://charlesandivy.co.uk)