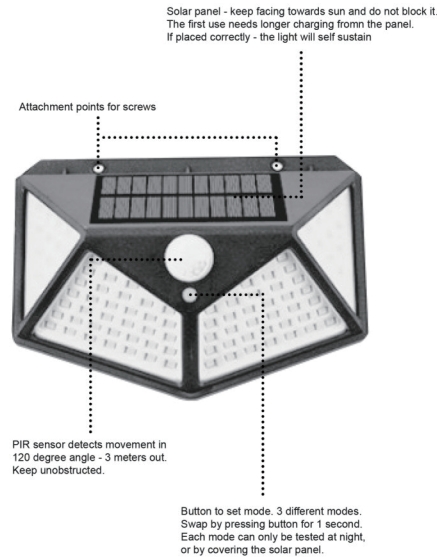


nexsmart

SOLAR OUTDOOR LIGHT USER GUIDE



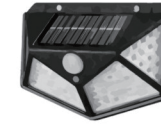
Quick guide:



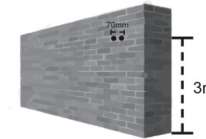
Installation:



For best first use, leave the SOLAR OUTDOOR LIGHT in direct sunlight for ~5 hours



On your wall, drill 2 holes 70 mm apart. Use your desired location. 3 meters height is recommended. **PRO TIP:** Use the holes on the light to mark the walls with a pencil.

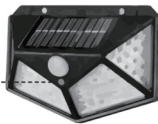


Place the light and drive in the screws. Make sure the solar panel is facing up towards the sky. If installed correctly, no more interaction is necessary except setting up the desired mode of operation.



Modes:

Changing modes can be done by pressing the center button for 1 second. Each press will cycle to the next mode - 3 in total. Modes cycle in the following way - 1.2.3.1.....



Mode 1:

The first mode is the default. At night, the lamp will trigger when the PIR sensor detects movement. After 15 seconds of no movement, the light will turn off.

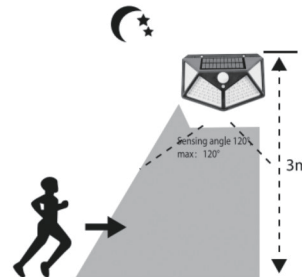
Mode 2:

The second mode is next. At night, the lamp will trigger 'full light mode' when the PIR sensor detects movement. When it no longer detects movement, the light will go into 'low light mode'.

Mode 3:

Next mode is the third. At night, the lamp will always be on 'low light mode' regardless of movement. Use this if you want constant low light.

Operation diagram:



Specifications:

OUTPUT:	5.5V, 1W, 17% efficiency
BATTERY CAPACITY:	1200 mAh
SENSOR ANGLE:	120 degrees
SENSOR DISTANCE:	5-8 meters
BRIGHTNESS:	800 LM
WEIGHT:	160g
DIMENSIONS:	130x95x53 mm

Precautions:

- The lamp might not be fully charged for the first use. To ensure a good first use, place the device out in the open with plenty of sunlight.
- There is no charger with the product, it cannot be plugged into anything. All power is coming from the sun through the solar panel into the built-in battery.
- Charging time and working time is affected by weather and season and geographical location. During winter it is recommended to use the default mode - mode 1.
- The light cannot be used during the day. It can be tested by covering the solar panels, this will stop the lamp from charging.
- Other light sources, such as street lights, can interfere with the functions of the lamp.
- Install the lamp in a place with sufficient light during the day. Make sure the solar panel side of the lamp is facing up.
- The installation of the lamp depends on the usecase. The suggested height of installation is between 2-3 meters above the ground.

When you need to get rid of the product again

The product is marked with the crossed over trash bin symbol. This is because the product is an electric and electronic equipment, which may not be disposed with regular household waste, when it's discarded. The reason is that it contains dangerous substances, which can be a hazard for the environment and people's health. Instead, the product shall be submitted to the municipal / public garbage collection system, for example the municipal / public recycling sites.

