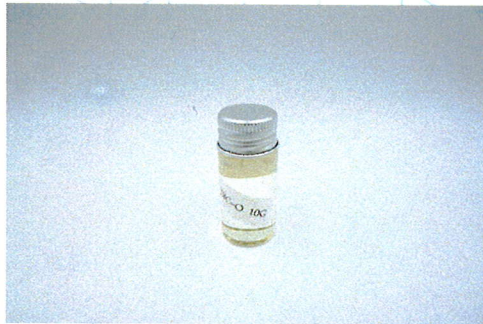


**THC-O**

Sample ID: SA-06182021-2319  
Batch: 003  
Type: In-Process Materials  
Matrix: Concentrate - Distillate

Received: 06/18/2021  
Completed: 07/06/2021



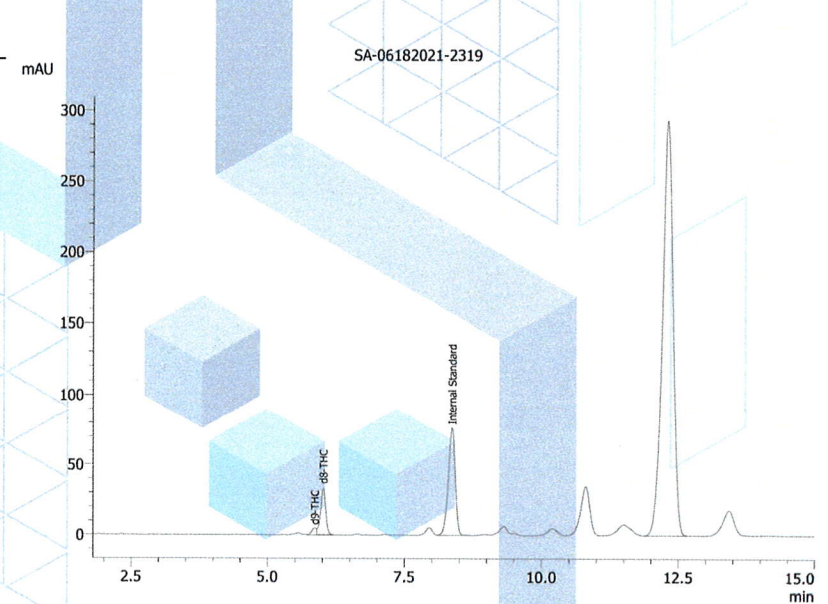
**Summary**

Test	Date Tested	Status
Cannabinoids	07/06/2021	Tested
Foreign Matter	06/21/2021	Not Detected
Heavy Metals	06/22/2021	Tested
Microbials	06/22/2021	Tested
Mycotoxins	06/21/2021	Tested
Pesticides	06/21/2021	Tested
Residual Solvents	06/21/2021	Tested
Terpenes	06/23/2021	Tested

**Cannabinoids by HPLC-PDA**

<b>0.248 %</b>	<b>2.44 %</b>	<b>2.69 %</b>	<b>Not Tested</b>	<b>Not Detected</b>	<b>Yes</b>
Total Δ9-THC	Δ8-THC	Total Cannabinoids	Moisture Content	Foreign Matter	Internal Marker Recovered

Analyte	LOD (%)	LOQ (%)	Result (%)	Result (mg/g)
CBC	0.0095	0.0284	ND	ND
CBCA	0.0181	0.0543	ND	ND
CBCV	0.006	0.018	ND	ND
CBD	0.0081	0.0242	ND	ND
CBDA	0.0043	0.013	ND	ND
CBDV	0.0061	0.0182	ND	ND
CBDVA	0.0021	0.0063	ND	ND
CBG	0.0057	0.0172	ND	ND
CBGA	0.0049	0.0147	ND	ND
CBL	0.0112	0.0335	ND	ND
CBLA	0.0124	0.0371	ND	ND
CBN	0.0056	0.0169	ND	ND
CBNA	0.006	0.0181	ND	ND
Δ8-THC	0.0104	0.0312	2.4437	24.4368
Δ9-THC	0.0076	0.0227	0.2484	2.4843
Δ9-THCA	0.0084	0.0251	ND	ND
Δ9-THCV	0.0069	0.0206	ND	ND
Δ9-THCVA	0.0062	0.0186	ND	ND
<b>Total Δ9-THC</b>			<b>0.2484</b>	<b>2.4843</b>
<b>Total CBD</b>			<b>ND</b>	<b>ND</b>
<b>Total</b>			<b>2.6921</b>	<b>26.9211</b>



ND = Not Detected; NT = Not Tested; LOD = Limit of Detection; LOQ = Limit of Quantitation; RL = Reporting Limit; Δ = Delta; Total Δ9-THC = Δ9-THCA \* 0.877 + Δ9-THC; Total CBD = CBDA \* 0.877 + CBD



07/06/2021



ISO/IEC 17025:2017 Accredited  
Accreditation #108651

This product or substance has been tested by KCA Laboratories using validated testing methodologies and an ISO/IEC 17025:2017 accredited quality system. Values reported relate only to the product or substance tested. The reported result is based on a sample weight. Unless otherwise stated, results of tests performed on all quality control samples met criteria for acceptance established by KCA Laboratories. KCA Laboratories makes no claims as to the efficacy, safety or other risks associated with any detected or non-detected amounts of any substances reported herein. This Certificate of Analysis shall not be reproduced except in full, without the written approval of KCA Laboratories. KCA Laboratories can provide measurement uncertainty upon request.



**KCA Laboratories**  
 232 North Plaza Drive  
 Nicholasville, KY 40356

+1-833-KCA-LABS  
<https://kcalabs.com>  
 KDA Lic.# P\_0058

# Certificate of Analysis

## THC-O

Sample ID: SA-06182021-2319  
 Batch: 003  
 Type: In-Process Materials  
 Matrix: Concentrate - Distillate

Received: 06/18/2021  
 Completed: 07/06/2021

## Heavy Metals by ICP-MS

Analyte	LOD (ppb)	LOQ (ppb)	Result (ppb)
Arsenic	2	20	ND
Cadmium	1	20	ND
Lead	2	20	ND
Mercury	12	50	ND

ND = Not Detected; NT = Not Tested; LOD = Limit of Detection; LOQ = Limit of Quantitation; P = Pass; F = Fail; RL = Reporting Limit

07/06/2021

This product or substance has been tested by KCA Laboratories using validated testing methodologies and an ISO/IEC 17025:2017 accredited quality system. Values reported relate only to the product or substance tested. The reported result is based on a sample weight. Unless otherwise stated, results of tests performed on all quality control samples met criteria for acceptance established by KCA Laboratories. KCA Laboratories makes no claims as to the efficacy, safety or other risks associated with any detected or non-detected amounts of any substances reported herein. This Certificate of Analysis shall not be reproduced except in full, without the written approval of KCA Laboratories. KCA Laboratories can provide measurement uncertainty upon request.



**KCA Laboratories**  
232 North Plaza Drive  
Nicholasville, KY 40356

+1-833-KCA-LABS  
<https://kcalabs.com>  
KDA Lic.# P\_0058

**Certificate of Analysis**

**THC-O**

Sample ID: SA-06182021-2319  
Batch: 003  
Type: In-Process Materials  
Matrix: Concentrate - Distillate

Received: 06/18/2021  
Completed: 07/06/2021

**Pesticides by LC-MS/MS and GC-MS/MS**

Analyte	LOD (ppb)	LOQ (ppb)	Result (ppb)	Analyte	LOD (ppb)	LOQ (ppb)	Result (ppb)
Abamectin	1	5	ND	Hexythiazox	1	5	ND
Acephate	1	5	ND	Imazalil	1	5	ND
Acetamiprid	1	5	ND	Imidacloprid	1	5	ND
Aldicarb	1	5	ND	Kresoxim methyl	1	5	ND
Azoxystrobin	1	5	ND	Malathion	1	5	ND
Bifenazate	1	5	ND	Metalaxyl	1	5	ND
Boscalid	1	5	ND	Methiocarb	1	5	ND
Carbaryl	1	5	ND	Methomyl	1	5	ND
Carbofuran	1	5	ND	Mevinphos	1	5	ND
Chloranthraniliprole	1	5	ND	Myclobutanil	1	5	ND
Chlorpyrifos	1	5	ND	Oxamyl	1	5	ND
Coumaphos	1	5	ND	Paclobutrazol	1	5	ND
Daminozide	1	5	ND	Permethrin	1	5	ND
Diazinon	1	5	ND	Phosmet	1	5	ND
Dichlorvos	1	5	ND	Piperonyl Butoxide	1	5	ND
Dimethoate	1	5	ND	Propiconazole	1	5	ND
Dimethomorph	1	5	ND	Propoxur	1	5	ND
Ethoprophos	1	5	ND	Pyridaben	1	5	ND
Etoxazole	1	5	ND	Spinetoram	1	5	ND
Fenhexamid	1	5	ND	Spinosad	1	5	ND
Fenoxycarb	1	5	ND	Spirotetramat	1	5	ND
Fenpyroximate	1	5	ND	Spiroxamine	1	5	ND
Fipronil	1	5	ND	Tebuconazole	1	5	ND
Flonicamid	1	5	ND	Thiacloprid	1	5	ND
Fludioxonil	1	5	ND	Thiamethoxam	1	5	ND
				Trifloxystrobin	1	5	ND

ND = Not Detected; NT = Not Tested; LOD = Limit of Detection; LOQ = Limit of Quantitation; P = Pass; F = Fail; RL = Reporting Limit

07/06/2021



This product or substance has been tested by KCA Laboratories using validated testing methodologies and an ISO/IEC 17025:2017 accredited quality system. Values reported relate only to the product or substance tested. The reported result is based on a sample weight. Unless otherwise stated, results of tests performed on all quality control samples met criteria for acceptance established by KCA Laboratories. KCA Laboratories makes no claims as to the efficacy, safety or other risks associated with any detected or non-detected amounts of any substances reported herein. This Certificate of Analysis shall not be reproduced except in full, without the written approval of KCA Laboratories. KCA Laboratories can provide measurement uncertainty upon request.



**KCA Laboratories**  
 232 North Plaza Drive  
 Nicholasville, KY 40356

+1-833-KCA-LABS  
<https://kcalabs.com>  
 KDA Lic.# P\_0058

**Certificate of Analysis**

**THC-O**

Sample ID: SA-06182021-2319  
 Batch: 003  
 Type: In-Process Materials  
 Matrix: Concentrate - Distillate

Received: 06/18/2021  
 Completed: 07/06/2021

**Microbials by qPCR and/or Plating**

Analyte	LOD	Result (CFU/g)
Aerobic Bacteria	100	ND
E.coli/Coliforms	100	ND
Salmonella	100	ND
Total Enterobacteriaceae	100	ND

ND = Not Detected; NT = Not Tested; LOD = Limit of Detection; LOQ = Limit of Quantitation; CFU = Colony Forming Units; P = Pass; F = Fail; RL = Reporting Limit

07/06/2021

This product or substance has been tested by KCA Laboratories using validated testing methodologies and an ISO/IEC 17025:2017 accredited quality system. Values reported relate only to the product or substance tested. The reported result is based on a sample weight. Unless otherwise stated, results of tests performed on all quality control samples met criteria for acceptance established by KCA Laboratories. KCA Laboratories makes no claims as to the efficacy, safety or other risks associated with any detected or non-detected amounts of any substances reported herein. This Certificate of Analysis shall not be reproduced except in full, without the written approval of KCA Laboratories. KCA Laboratories can provide measurement uncertainty upon request.



**KCA Laboratories**  
 232 North Plaza Drive  
 Nicholasville, KY 40356

+1-833-KCA-LABS  
<https://kcalabs.com>  
 KDA Lic.# P\_0058

**Certificate of Analysis**

**THC-O**

Sample ID: SA-06182021-2319  
 Batch: 003  
 Type: In-Process Materials  
 Matrix: Concentrate - Distillate

Received: 06/18/2021  
 Completed: 07/06/2021

**Mycotoxins by LC-MS/MS**

Analyte	LOD (ppb)	LOQ (ppb)	Result (ppb)
B1	1	5	ND
B2	1	5	ND
G1	1	5	ND
G2	1	5	ND
Ochratoxin A	1	5	ND

ND = Not Detected; NT = Not Tested; LOD = Limit of Detection; LOQ = Limit of Quantitation; P = Pass; F = Fail; RL = Reporting Limit

07/06/2021

This product or substance has been tested by KCA Laboratories using validated testing methodologies and an ISO/IEC 17025:2017 accredited quality system. Values reported relate only to the product or substance tested. The reported result is based on a sample weight. Unless otherwise stated, results of tests performed on all quality control samples met criteria for acceptance established by KCA Laboratories. KCA Laboratories makes no claims as to the efficacy, safety or other risks associated with any detected or non-detected amounts of any substances reported herein. This Certificate of Analysis shall not be reproduced except in full, without the written approval of KCA Laboratories. KCA Laboratories can provide measurement uncertainty upon request.

**THC-O**

 Sample ID: SA-06182021-2319  
 Batch: 003  
 Type: In-Process Materials  
 Matrix: Concentrate - Distillate

 Received: 06/18/2021  
 Completed: 07/06/2021

**Terpenes by HS-GC-MS/MS**

Analyte	LOD (%)	LOQ (%)	Result (%)	Analyte	LOD (%)	LOQ (%)	Result (%)
α-Bisabolol	0.00001	0.00005	ND	Limonene	0.00001	0.00005	ND
(+)-Borneol	0.00001	0.00005	ND	Linalool	0.00001	0.00005	ND
Camphene	0.00001	0.00005	ND	β-myrcene	0.00001	0.00005	ND
Camphor	0.00001	0.00005	ND	Nerol	0.00001	0.00005	ND
3-Carene	0.00001	0.00005	ND	cis-Nerolidol	0.00001	0.00005	ND
β-Caryophyllene	0.00001	0.00005	ND	trans-Nerolidol	0.00001	0.00005	ND
Caryophyllene Oxide	0.00001	0.00005	ND	Ocimene	0.00001	0.00005	ND
α-Cedrene	0.00001	0.00005	ND	α-Phellandrene	0.00001	0.00005	ND
Cedrol	0.00001	0.00005	ND	α-Pinene	0.00001	0.00005	ND
Eucalyptol	0.00001	0.00005	ND	β-Pinene	0.00001	0.00005	ND
Fenchone	0.00001	0.00005	ND	Pulegone	0.00001	0.00005	ND
Fenchyl Alcohol	0.00001	0.00005	ND	Sabinene	0.00001	0.00005	ND
Geraniol	0.00001	0.00005	ND	Sabinene Hydrate	0.00001	0.00005	ND
Geranyl Acetate	0.00001	0.00005	ND	α-Terpinene	0.00001	0.00005	ND
Guaiol	0.00001	0.00005	ND	γ-Terpinene	0.00001	0.00005	ND
Hexahydrothymol	0.00001	0.00005	ND	α-Terpineol	0.00001	0.00005	ND
α-Humulene	0.00001	0.00005	ND	γ-Terpineol	0.00001	0.00005	ND
Isoborneol	0.00001	0.00005	ND	Terpinolene	0.00001	0.00005	ND
Isopulegol	0.00001	0.00005	ND	Valencine	0.00001	0.00005	ND
				<b>Total Terpenes (%)</b>			<b>0.00000</b>

ND = Not Detected; NT = Not Tested; LOD = Limit of Detection; LOQ = Limit of Quantitation; P = Pass; F = Fail; RL = Reporting Limit



07/06/2021