



Bommer Model 7811 Medium Duty Center Hung Spring Pivot

Application

Double Acting
Weight to 90 lbs.
Door Width up to 3'
1-3/8" to 1-3/4" Thick doors
Floor Mounted

Hold-Open

Handing

Non-Handed

Finish

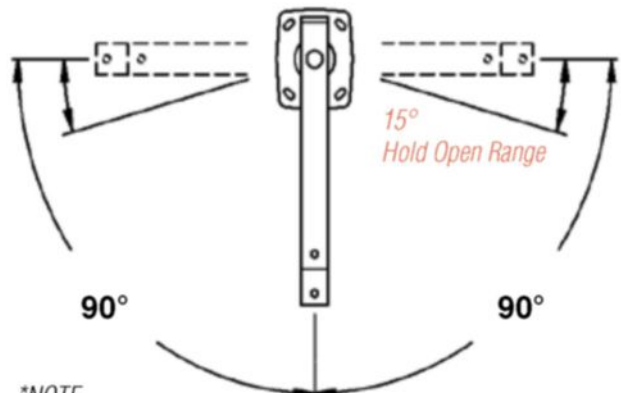
Specify 652 - Satin Chrome
Other finishes available

Features

- Includes top pivot, bottom pivot and cover plates
- Center hung spring pivot for use on interior doors
- Hold open feature at approximately 85 degrees
- Commonly used on butler & pantry doors
- Spring returns pivot to center
- Steel pivot mechanism and plated steel cover plates
- Anti-friction bearing
- Adjustable spring tension

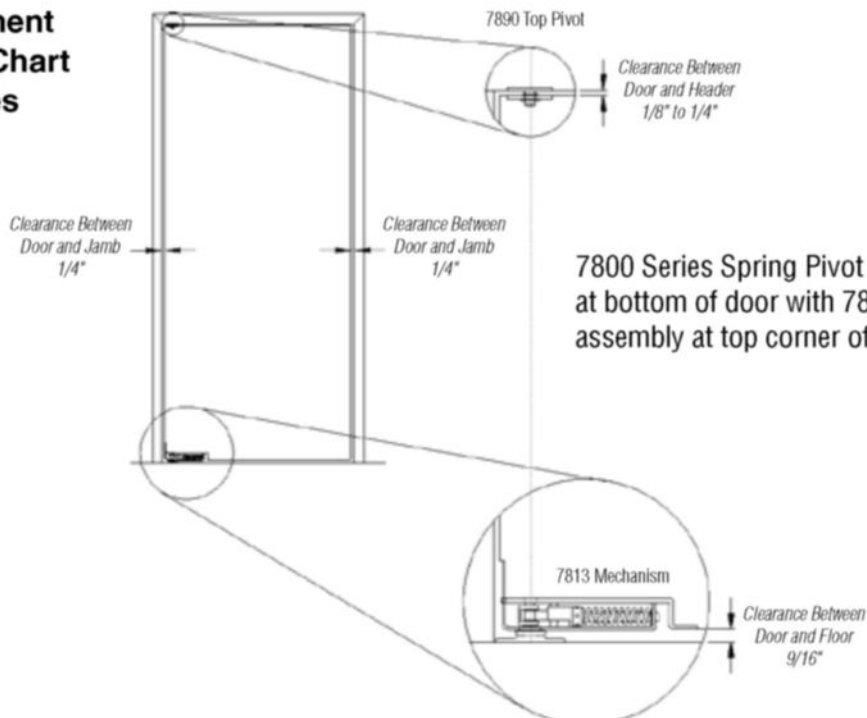


Range of Motion 7800 Series



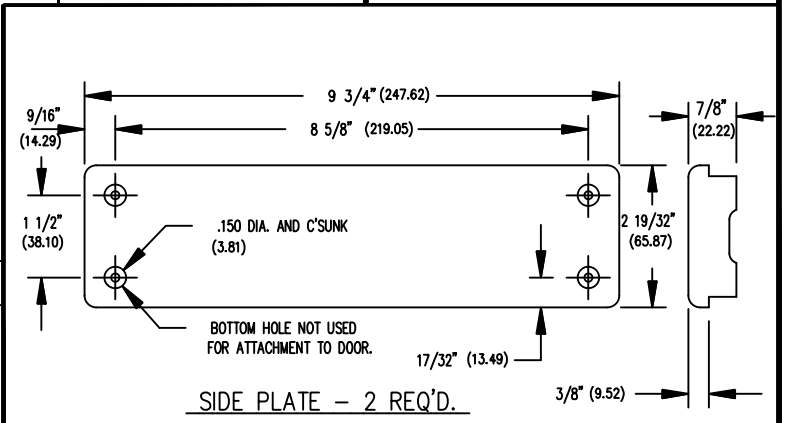
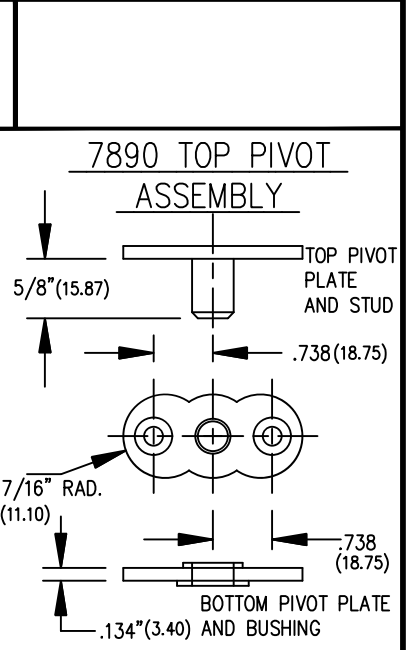
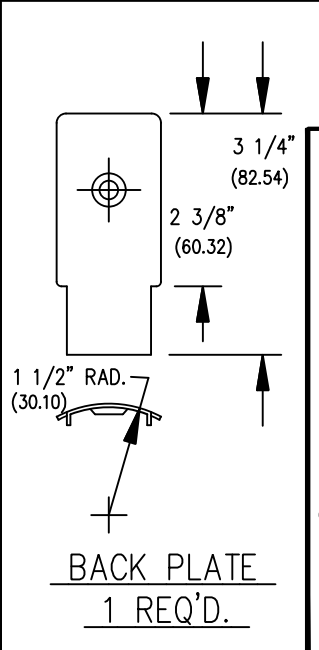
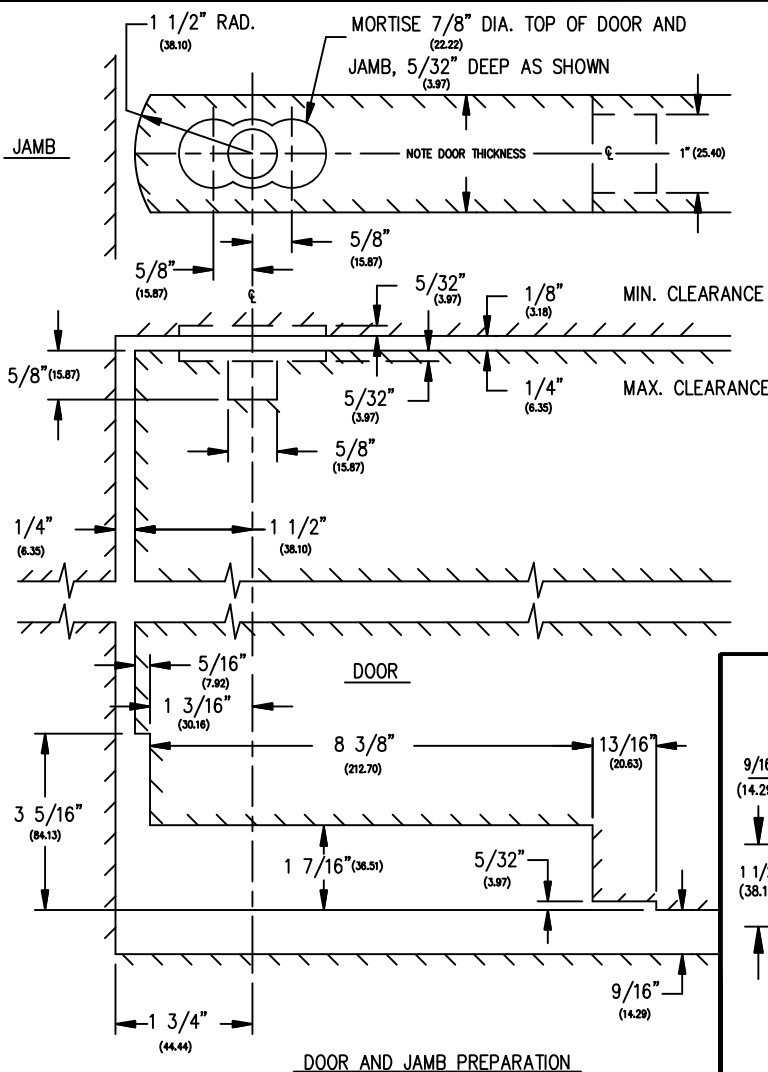
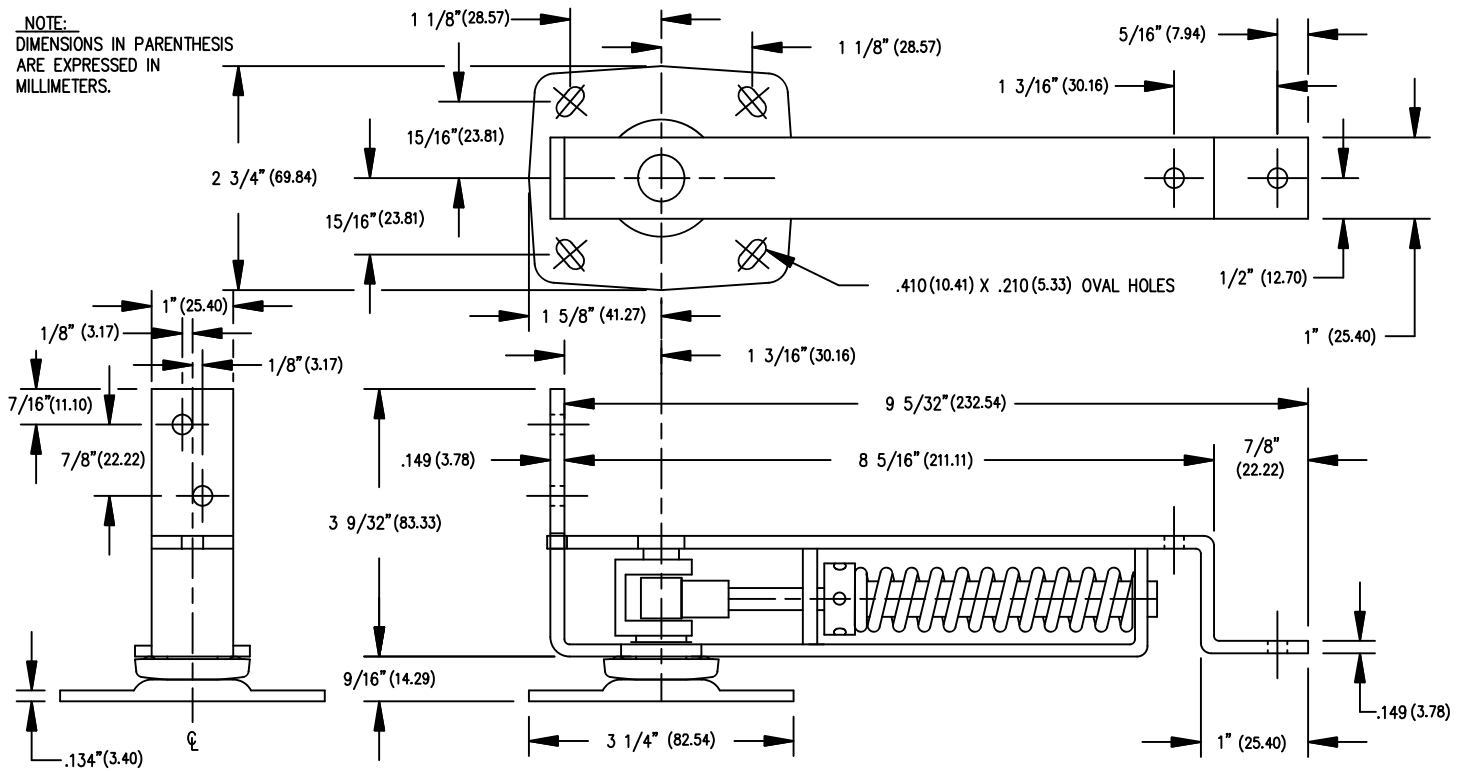
**NOTE*
For Non-Hold Open function reference:
Bommer Model 7813
Medium Duty Center Hung Spring Pivot

Pivot Placement & Clearance Chart 7800 Series



7800 Series Spring Pivot mounts into cutout at bottom of door with 7890 Top Pivot assembly at top corner of door and frame.

NOTE:
DIMENSIONS IN PARENTHESIS
ARE EXPRESSED IN
MILLIMETERS.



ITEM	SCREWS
FRAME	(4) #10 X 1 1/4" PAN HEAD WOOD SCREW
FLOOR PLATE	(4) #10 X 1 1/4" PAN HEAD WOOD SCREW
SIDE PLATE	(4) #6 X 3/4" FLAT HEAD WOOD SCREW
BACK PLATE	(1) #10-24 X 1/2" FLAT HEAD MACHINE SCREW
TOP PIVOT	(4) #10 X 1" FLAT HEAD WOOD SCREW

NOTE
DOOR THICKNESS
1 3/8" TO 1 3/4"

BOMMER IND. INC. LANDRUM, S.C.
TYPE : HORIZONTAL SPRING PIVOT
DOUBLE ACTING
PART NO.: 7811 AND 7821
REVISED DATE: 09 OCT 2014
Drawn by : JACKSON DATE 15 MAY 98 SCALE N.T.S. DRAWING NUMBER 7811TEMP REV. C