

IDV

INTERNAL DUCT VALVE

IDVSS

INTERNAL DUCT VALVE

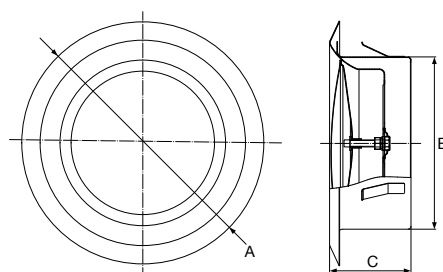
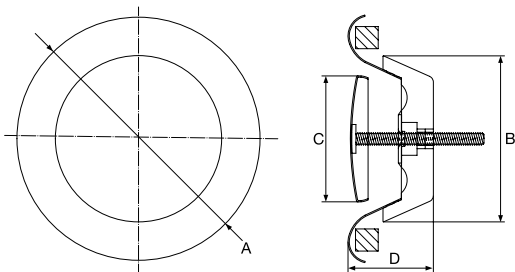


The IDV is constructed from high quality steel with a white finish. The valve body is equipped with a mounting ring for ease of installation. Air flow can be easily adjusted by rotating the control disc.

The IDVSS is constructed with high quality 304 stainless steel to minimise the risk of rust. The valve body is equipped with a mounting ring for ease of installation. It can be used for both return and supply air with air flow easily adjusted by rotating the control disc.

- Manufactured from high quality steel with a white finish.
- Stylish design.
- Adjustable air flow.
- Quick & easy installation.
- Includes mounting ring.

- Constructed with 304 quality stainless steel.
- Stylish design.
- For both return & supply air.
- Quick & easy installation.
- Includes mounting ring.



MODEL NO.	AØ	DUCT DIAMETER BØ	C	D
IDV100	140	100	74	39
IDV150	201	150	120	51

MODEL NO.	AØ	DUCT DIAMETER BØ	C
IDVSS100	140	100	58
IDVSS125	172	125	58
IDVSS150	217	150	70

All dimensions in mm

All dimensions in mm



LINEAR SLOT

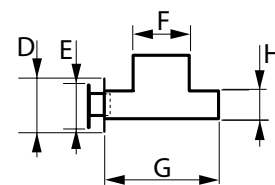
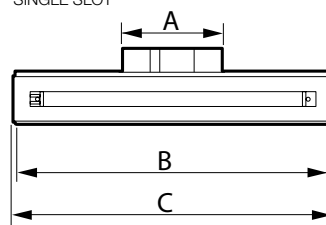
INTERNAL GRILLE



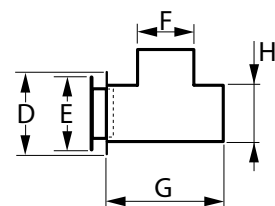
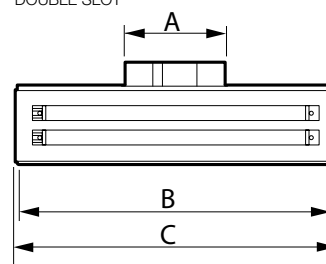
The sleek looking Linear Slot internal exhaust grilles have been designed to suit the modern and contemporary bathroom, ensuite or toilet. They come with a 150mm duct connection and are available in single and dual slot. Comes in white and silver finishes as standard.

- Discreetly blends into the latest architecturally designed bathroom or ensuite.
- Works in conjunction with a duct mounted, roof mounted or external wall mounted fan.
- High quality galvanised steel cushion head box.
- Oval spigot allows 150mm duct connection.
- Available with single slot, or dual slot for additional air flow.

SINGLE SLOT

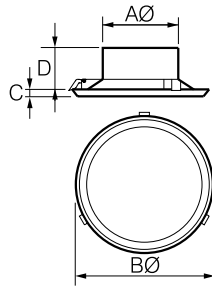


DOUBLE SLOT



MODEL NO.	NO. OF SLOTS	COLOUR	A†	B	C	D	E	F†	G	H
LSD125-600A	1	Anodised Silver	172	550	553	100	80	105	200	55
LSD125-600W	1	White	172	550	553	100	80	105	200	55
LSD225-600A	2	Anodised Silver	172	550	553	139	126	105	200	98
LSD225-600W	2	White	172	550	553	139	126	105	200	98

† Oval shaped duct spigot suits 150mm flexible duct.
All dimensions mm



- Air flow can be easily adjusted by rotating the control disk.
- Sleek, stylish design with a non-reflective white surface.
- High quality ABS plastic, scratch & chip resistant.

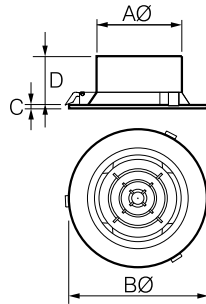
IALG

INTERNAL CEILING GRILLE



PART NO. (SINGLE UNIT ONLY)	PART NO. (FOR BULK PACK)	NO. OF GRILLES IN BULK PACK	DUCT DIAMETER AØ	BØ	C	D	HOLE CUTOUT Ø
IALG150PK	IALG150	10	150	260	16	90	232
IALG200PK	-	-	200	315	16	95	282
IALG250PK	-	-	250	390	16	100	355
IALG300PK	-	-	300	440	16	100	405

All dimensions in mm



- Air flow can be easily adjusted by rotating central button.
- High quality ABS plastic, scratch & chip resistant.
- Non-reflective white surface.

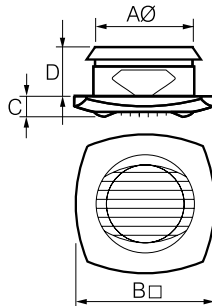
IDJG

INTERNAL CEILING GRILLE



PART NO. (SINGLE UNIT ONLY)	PART NO. (FOR BULK PACK)	NO. OF GRILLES IN BULK PACK	DUCT DIAMETER AØ	BØ	C	D	HOLE CUTOUT Ø
IDJG150PK	IDJG150	10	150	240	5	95	206
IDJG200PK	-	-	200	290	5	115	256

All dimensions in mm

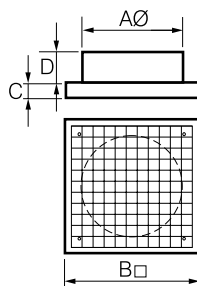


ILG INTERNAL CEILING GRILLE

Ceiling mounted inlet/outlet clip-in grille.

PART NO.	DUCT DIAMETER AØ	BØ	C	D	HOLE CUTOUT Ø
ILG125PK	125	170	26	60	130

All dimensions in mm



ECG INTERNAL CEILING GRILLE

Ceiling mounted inlet grille.

PART NO.	DUCT DIAMETER AØ	BØ	C	D	HOLE CUTOUT Ø
ECG100PK	100	140	10	35	100
ECG125PK	125	160	13	25	125
ECG150PK	150	175	12	35	150

All dimensions in mm



RAPID RESPONSE

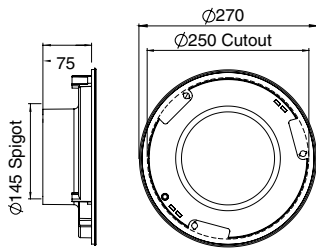
GRILLE TO DUCT CONNECTOR

The easy to install Rapid Response grille to duct connector is designed to fit one of our modern 8" Rapid Response grilles and flexible duct. The grille to duct connector is suitable for ducted systems that use an in-line, roof, or external wall mounted fan. Grilles are quick to remove, making them easy to clean.

- High strength swing clips make installation easy.
- Can be retrofitted into a standard 8" round cut out.
- Designed to fit our range of 8" Rapid Response grilles.
- Suitable for 150mm ducting.



See page 32-33 for full range of Rapid Response grille options.



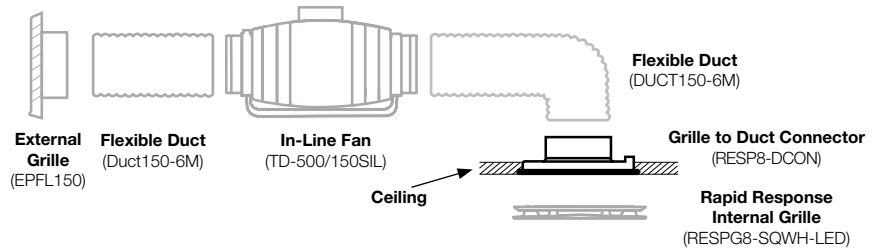
All dimensions in mm



Rotate swing clips to hold grille to duct connector in place.

Tighten screws so clips clamp onto ceiling board.

TYPICAL IN-LINE INSTALLATION



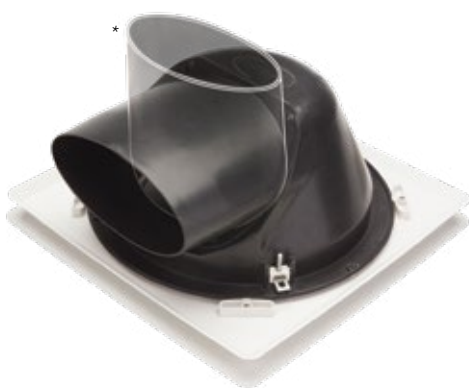
Model No. RESP8-DCON

RAPID RESPONSE

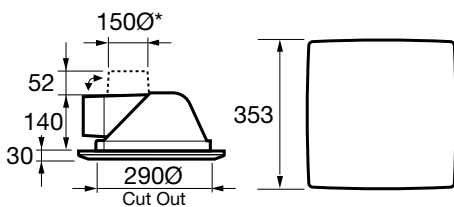
CEILING GRILLE WITH CLIP-IN SPIGOT

The Rapid Response ceiling grille with clip-in spigot has been designed for ducted systems using an in-line fan and external grille. It can be positioned for horizontal or vertical duct connection.

- Can be retrofitted into a standard 10" round fan cut out.
- Unique 'push-out' ceiling clamps make installation easy.
- Clip-in spigot makes installation and duct connection easier.
- Grille can be easily removed for cleaning and rotated to align with walls.



* Oval spigot designed to fit 150mm duct. Spigot can be mounted horizontally or vertically.



All dimensions in mm

Model No. RCG150SQWH