



 **TileStyle**  
**HOSPITALITY**  
HOTELS | RESTAURANTS | BARS





## Contents

- 4.** About TileStyle
- 6.** Expertise
- 9.** Product Portfolio
- 34.** Project Experience
- 63.** Brand Relationships
- 64.** Sustainability
- 66.** Why TileStyle?



## About TileStyle

- Family owned and run since 1982.
- Leading supplier of commercial sanitary ware, tiles, natural stone, porcelain slabs, wood, laminate and LVT flooring, kitchens, coffee stations, wardrobes and external façades for commercial environments.
- Trusted partner with over 40 years' experience providing creative solutions for hotel bathrooms, restaurants, bars, commercial kitchens, swimming pools, spas, gyms, public spaces and external facades.
- Supplier of prefabricated POD bathrooms for large scale new build projects.







## The Hospitality Team

### Expertise

- Highly experienced, specialist in-house team looking after our hospitality client portfolio.
- Deep understanding of the commercial, aesthetic and compliance complexities of building & renovation projects.
- Experts in product specification, offering comprehensive design and technical advice for bathrooms, tiles, natural stone, wood flooring, laminates, LVTs, external facades and POD systems.
- Experienced in working within set budgets.
- Work directly with clients or with project architects and designers to ensure the right products are selected for each project
- Provide ongoing support at every stage of the project.



**Tony Murphy**  
Hospitality Sales Manager



**Mike Kelly**  
Sales Director –  
Commercial



**Suzanne Cooling**  
Head of Logistics



**Denise Bridgette**  
Hospitality Administrator



**Frances Snow**  
Hospitality Administrator



## Our Product Portfolio

- Sanitary Ware
- Tiles and Natural Stone
- Porcelain Slabs
- Wood and Laminate Flooring
- Luxury Vinyl Tiles
- Kitchens and Wardrobes
- Krion Solid Surfaces
- Ventilated Facades
- PODs





## Sanitary Ware

- Working with the world's leading brands including Porcelanosa, Noken, TOTO, Kaldewei, Vola, Samuel Heath and many more.
- Bringing the latest in design, innovation and technology to the hospitality industry.
- Water saving (flow restrictors, lower flush volumes)
- Energy saving (reduced water heating costs)
- LEED
- BREEAM
- Sustainability





## Sanitary Ware

- TOTO Japanese toilets (Supplied to the Merrion Hotel, Dromoland Castle and Leinster Hotel, to name but a few)
- Hygienic, touch free technology
- Antibacterial shower trays and toilet seats
- Rimless, easy-clean WCs
- Doc M Ambulant WC
- Wide selection of less abled bathroom equipment

## Tiles

- Most innovative, technically advanced products on the market
- Our tile specification experts are here to guide you through any design, technical, practical or compliance requirements including:
  - LRV (Light Reflective Value)
  - PTV (Pendulum Test Value)
  - EPD (Environmental Product Declaration)
  - CE Certification
  - LEED and BREEAM certification
- Wide range of outdoor paving slabs to compliment internal tiles, with required PTV ratings







## Tiles

- Vast selection of tiles for all types of applications:
  - Reception areas
  - Bars
  - Restaurants
  - Guest bathrooms
  - Spas, leisure centres and pools
  - Public restrooms
  - Kitchen & food preparation areas
  - Outdoor areas
- We also supply products for repairs or partial refurbishment projects





Wood-effect tiles are a popular choice for the hospitality sector. They offer the warmth and texture of wood, but with the ease of maintenance associated with porcelain tiles



## Porcelain Slabs

- Vast selection of large format porcelain slabs (available in sizes up to 320x150cm)
- Styles and finishes to suit a wide variety of project applications including interior and exterior applications such as walls, countertops, basins, baths etc.
- Offering visual continuity and premium impact.
- Highly resistant to stains, scratches, chemicals, UV rays, water and thermal shock



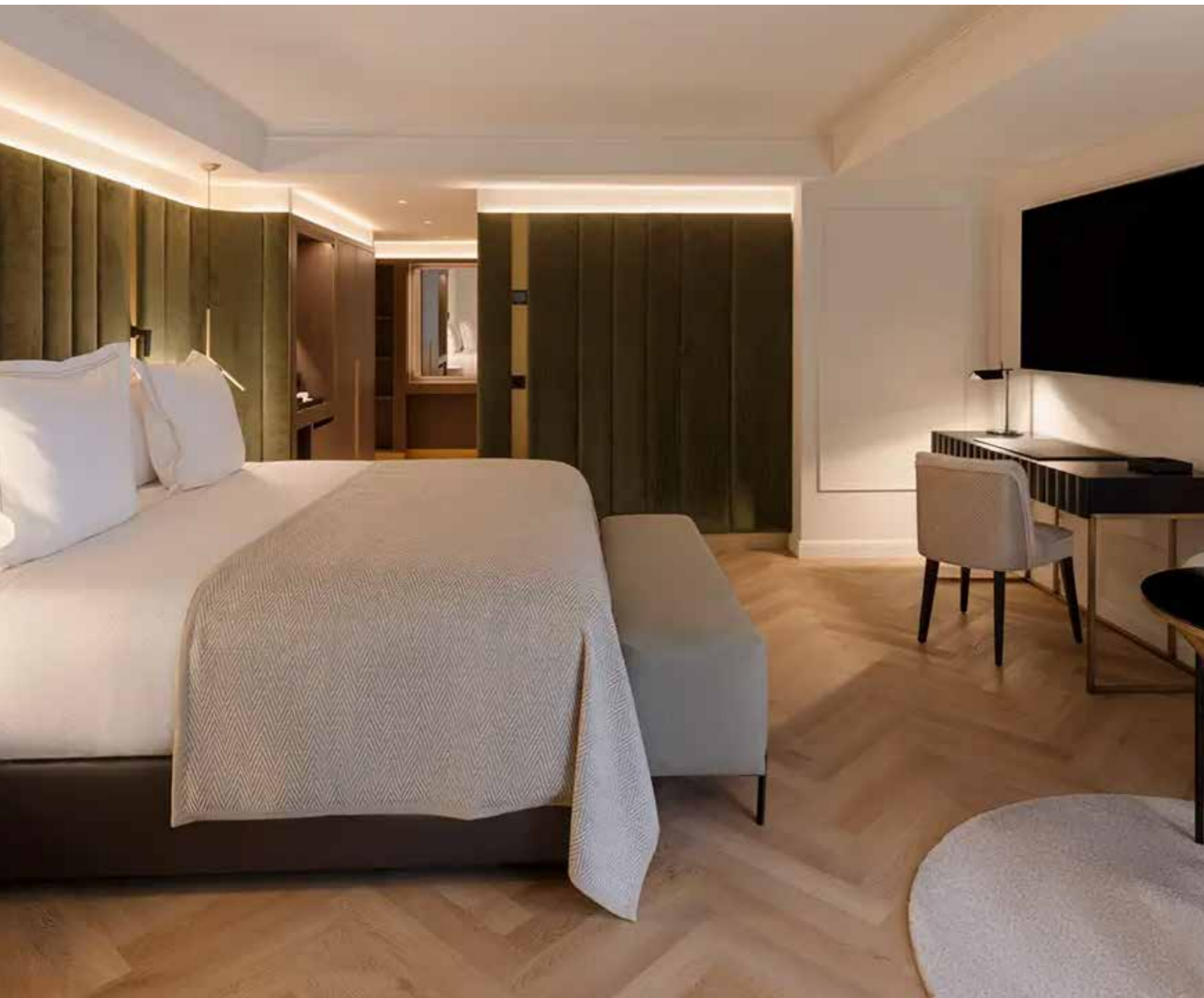




## Wood & Laminate Flooring

- Extensive range of commercial wood flooring
- Solid, engineered and laminate wood flooring for reception areas, bars, restaurants, gyms, public spaces and guest bedrooms
- Expert team to advise on suitability, technical specification etc.
- Experienced in supplying to a wide variety of commercial projects including Galgorm Hotel & Spa, Jameson Visitor Centre and many more

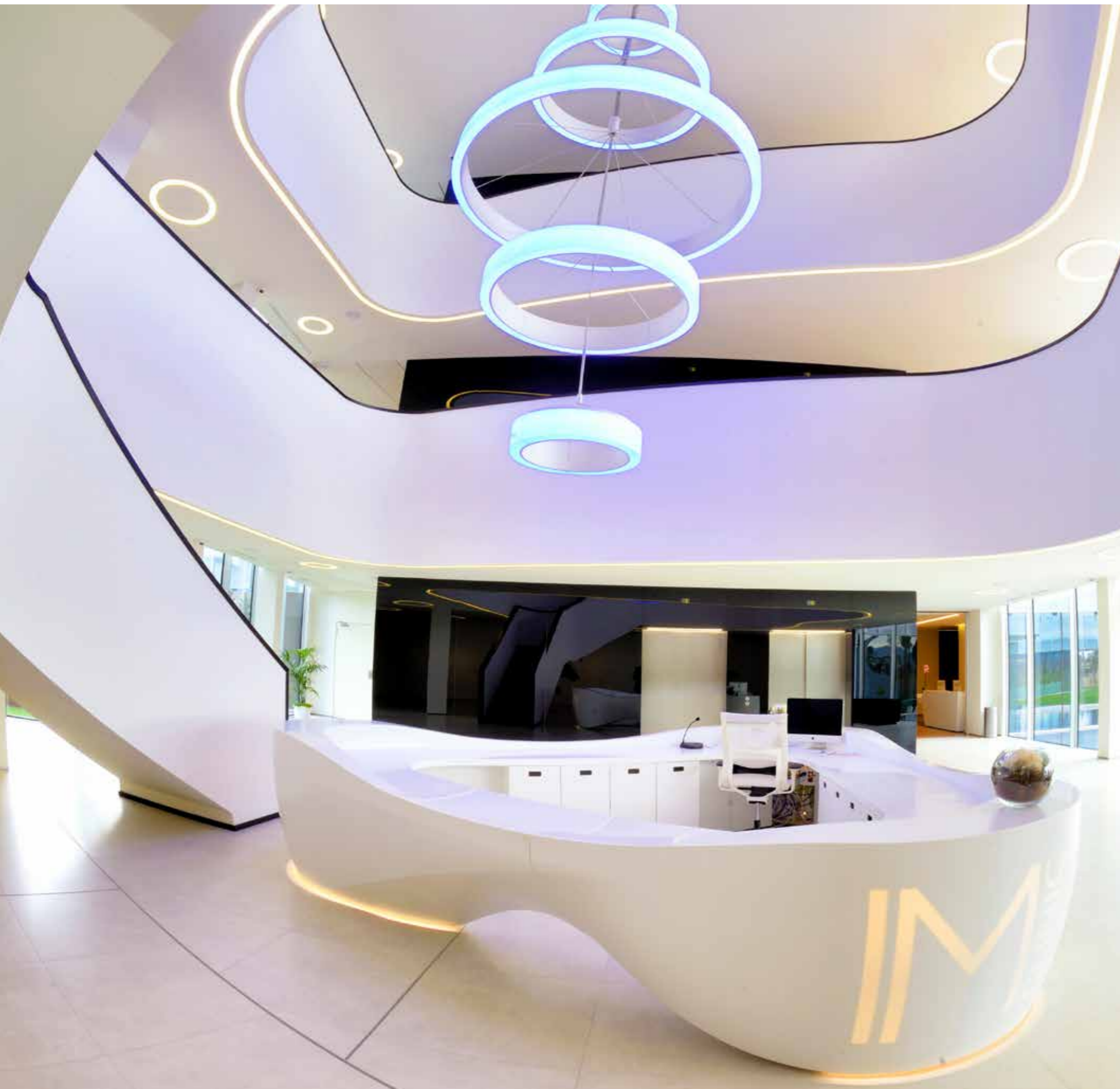




## LVT Flooring

- Extensive range of luxury vinyl tiles
- Designed to emulate natural stone, wood and textured fabric
- This exceptionally durable material is ideal for high traffic areas and particularly suited to hospitality settings
- Resistant to water, abrasion, staining, scuffs and scratches, as well as chemical agents
- Quick and easy to install





## KRION Solid Surfaces

- KRION™ is a new generation, hypo-allergenic, antibacterial and malleable solid surface material
- Suitable for interior and exterior use
- Available in a wide variety of colours
- Used to create unique settings across a wide variety of buildings including hotels, public buildings and entertainment venues
- We have supplied KRION™ for several projects including Dublin Airport, Waterways House (Dublin) and Arc Cinema (Drogheda)





## Ventilated Facades

- Ventilated facades in a variety of materials including KRION™, porcelain and natural stone.
- Our experienced technical team are here to:
  - Advise on feasibility and costings
  - Assist you with design
  - Produce working drawings

\*Waterways (seen here) is a KRION ventilated façade, completed in Dublin in 2019





## TileStyle PODS (Prefabricated bathrooms & kitchens)

- We are now delivering a total solution that can enhance the construction of hotels and hospitality venues
- TileStyle PODS delivers all the scale, style and certainty demanded by leading hospitality developers, contractors and architects
- Porcelanosa Group companies manufacture all the materials used in our PODS, so consistency of supply and quality control are maintained
- This gives you, and your team certainty over pricing, quality and delivery schedules

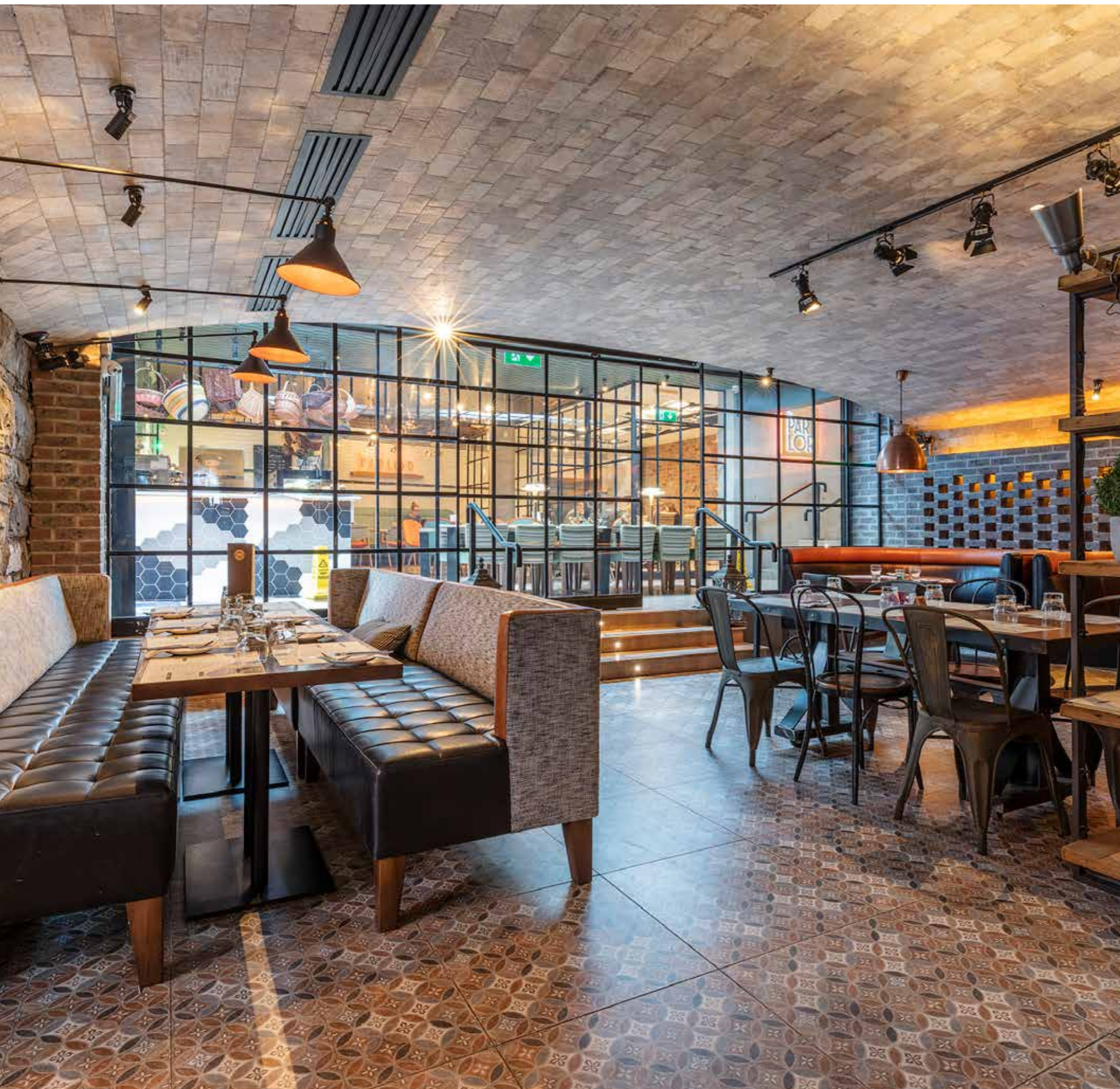


## Made to Measure Furniture

- Comprehensive range of coffee stations/ kitchenettes / wardrobes for the hospitality industry, with made to measure furnishings for every project
- Designed with hardwearing, premium materials
- Helps deliver a cohesive look and feel to your property, when combined with complementary flooring, tiles and sanitary ware





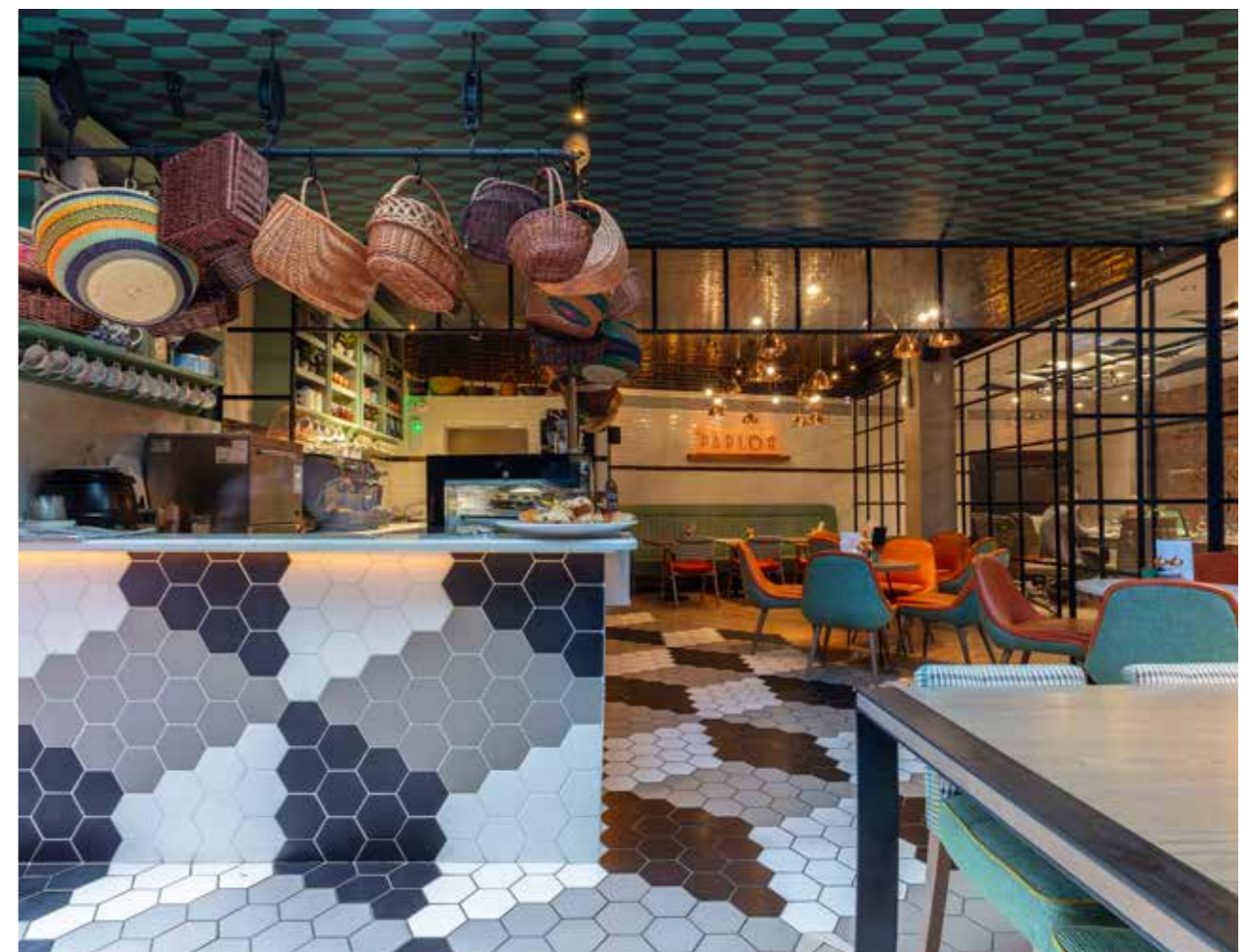
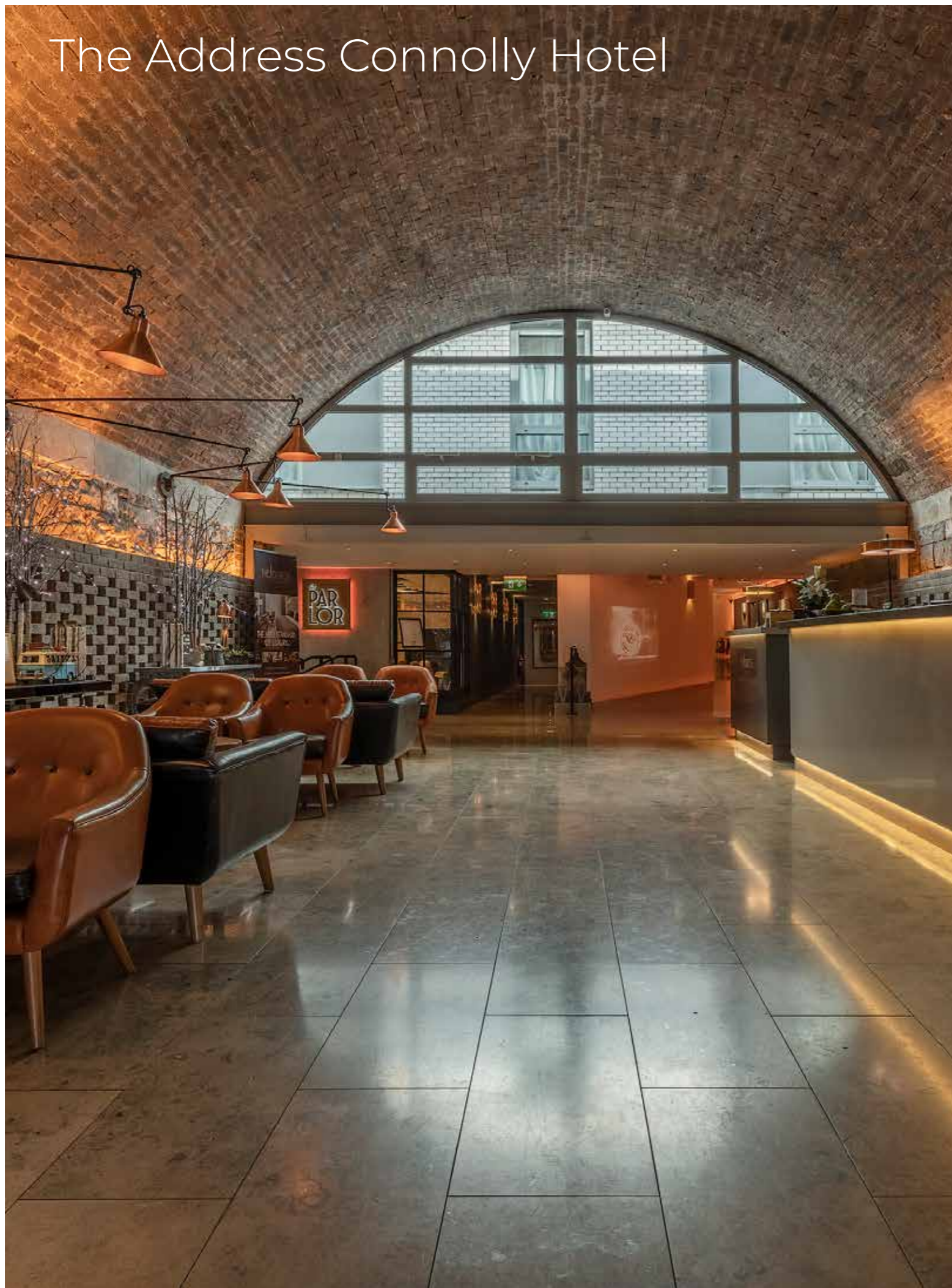


## The Address Connolly Hotel

- TileStyle supplied tiles and bathrooms for this 4-star contemporary hotel, working directly with the McGettigan Group
- Our team sourced materials from Europe's premium tile and bathroom suppliers as well as natural stone from quarries across Europe
- The hotel features an eclectic mix of luxe interiors, from fabric-effect geometric floor tiles to gleaming gold subway ceiling tiles
- Winner of Ireland's Best City Hotel 2018 at the prestigious Gold Medal Awards which are recognised as the leading independent awards programme for the Irish hospitality industry
- Suppliers included Noken, Porcelanosa, Opera Ceramiche, Quintessenza and ERLAU

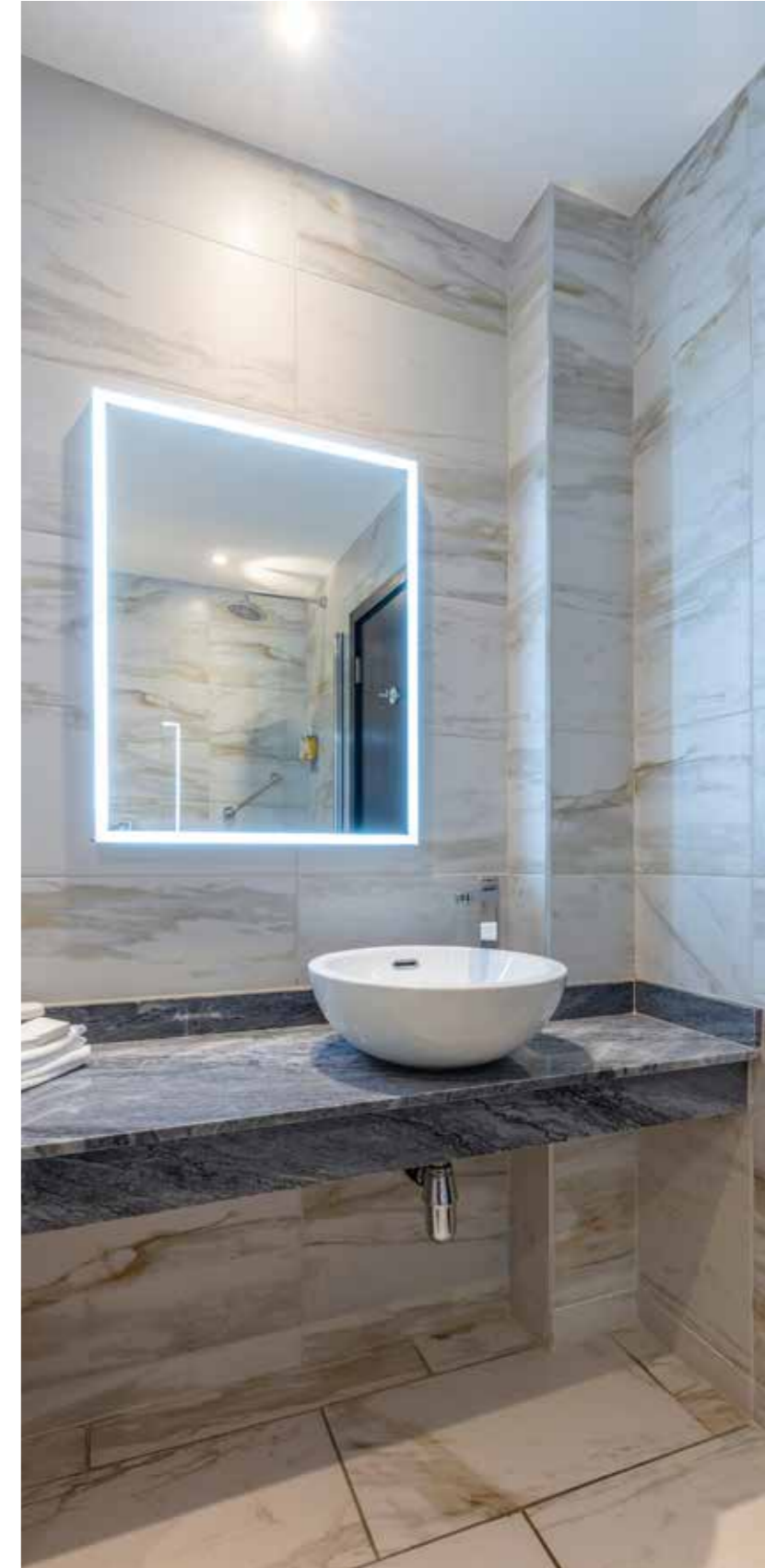


The Address Connolly Hotel





The Address Connolly Hotel







## Grafton Hotel

- TileStyle worked with Horan Rainsford Architects to supply a wide selection of tiles, mosaics, natural stone and sanitary ware for the interior of this beautiful boutique hotel in Dublin city centre
- With over 127 rooms, the hotel features eclectic decor reminiscent of design highlights from the 1920's - married with modern and state-of-the-art fixtures
- Listed by the Irish Independent and Forbes' as one of the best places to stay in Ireland
- Suppliers included Porcelanosa, Noken, Terratinta, Sicis, Merlyn, Hewi, Erlau and Krion





Grafton Hotel





## Bloomfield House Hotel

- Working in collaboration with SKI Interiors and the family-run Bloomfield House Hotel, TileStyle Hospitality supplied tiles, bathware and brassware for 30 stunning family bathrooms and 2 beautiful, stylish suites
- Leading brands were used throughout such as Noken from the Porcelanosa Group
- Our clients commented:  
*“TileStyle’s product and industry knowledge is fantastic. This along with their access to leading commercial brands all made the project such a major success for us”*





Bloomfield House Hotel



Bloomfield House Hotel







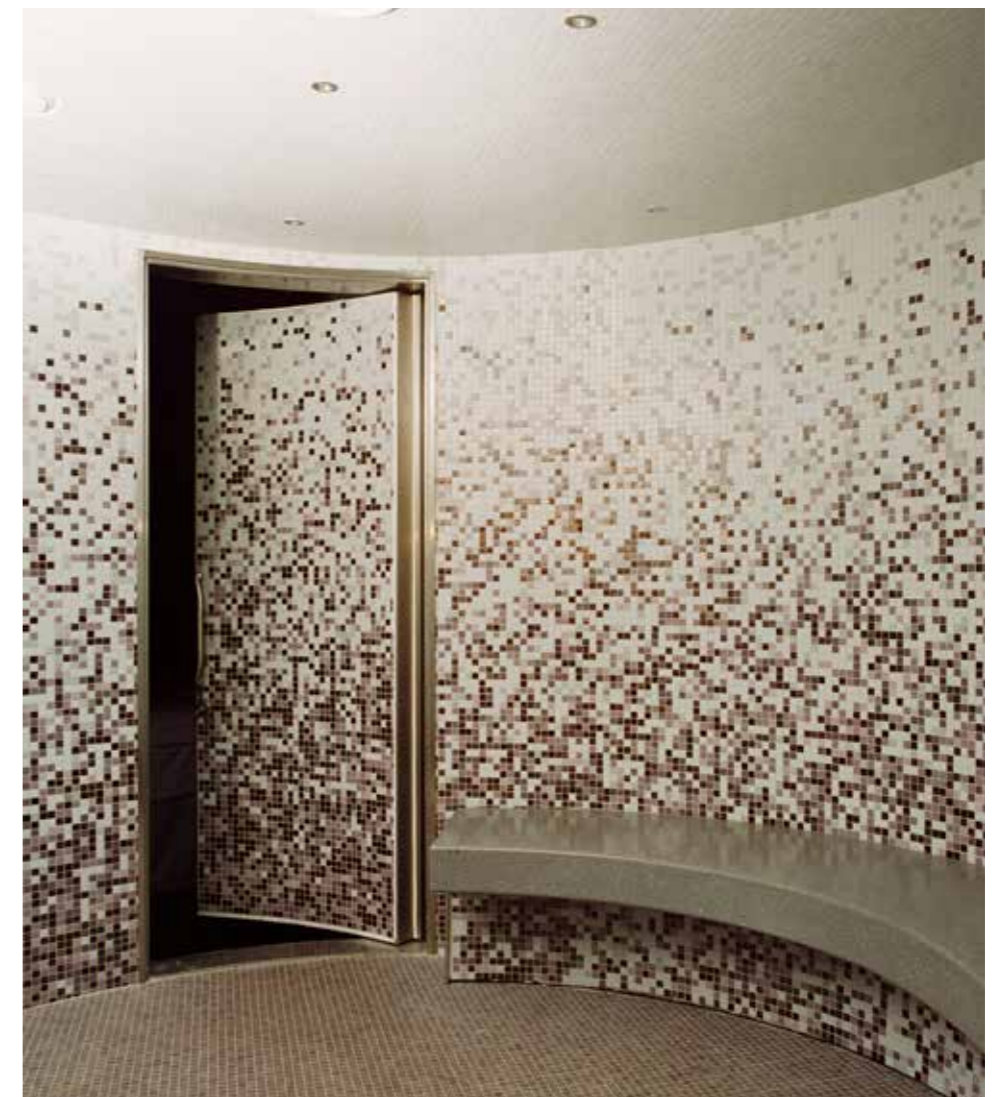
## Galgorm Hotel

TileStyle was delighted to supply this beautiful herringbone wood floor for the spa area and bedroom suites



# Carton House Leisure Centre

Tiles supplied for the pool and leisure centre





# Avoca

Supplied a wide variety of tiles and wood flooring for this unique restaurant and store in Dublin 4







## Jameson Visitor Centre

Supplied tiles and wood flooring  
for this stunning tourist experience



# Clonard Court Hotel

Delighted to work with Clonard Court Hotel on their recent refurbishment





# Current projects

We are honoured to work with the Hoxton Hotel (previously the iconic Central Hotel) supplying tiles and sanitary ware for their 129 guest bathrooms and public spaces



We are delighted to partner with the new Ruby Molly Hotel in Dublin, supplying them with a wide variety of materials including tiles and sanitary ware for their 272 guest bathrooms





## Longstanding brand relationships

PORCELANOSA



**ex.t** **cielo** TERRATINTA  
handmade in Italy group

**TOTO®** | **ITALGRANITI**  
Perfection by Design



**KALDEWEI**

MU  
TIN  
A

voia®





## Sustainability

- Significant focus on sustainability is now essential at every level of business
- Key for the hospitality industry, both from an environmental and cost management perspective
- Our global partners are well ahead of the curve, leading for decades in energy reduction and conservation

## Sustainability

### PORCELANOSA

- The Group has a huge commitment to sustainability, working towards Kyoto Agreement compliance.
- 20% reduction in carbon footprint achieved.
- 33% of all consumed energy is internally generated.



- Reduce climate emissions from Scope 1 and Scope 2 by 40% by 2025
- Define Science-based CO2 emission reduction targets and achieve validation by SBTi by 2023
- Increase % of sustainably sourced wood to 87% by 2025



- First porcelain stoneware manufacturer in the world to become a B Corp certified
- Annual improvements in Sustainability Report over 14 years
- Working on Environmental Improvements since the 1960s



## Why TileStyle

- Industry leaders in product specification, with over 40 years' experience delivering creative solutions to the Irish hospitality industry
- Dedicated in-house specialist team supporting our hospitality clients at every stage of the project
- High quality products, designed to last, from the world's most innovative manufacturers
- In-depth technical knowledge & support
- One-Stop-Shop with products to suit reception areas, restaurants, bars, bedrooms, bathrooms, kitchens and outdoor areas
- Highly competitive pricing with our complete solution
- Sustainability
- Extensive client portfolio
- Always strive to exceed our clients' expectations





Find out more

To find out more, email [hospitality@tilestyle.ie](mailto:hospitality@tilestyle.ie)  
or call **Tony Murphy on 087-4158804**



**TileStyle**

**HOSPITALITY**

HOTELS | RESTAURANTS | BARS

Ballymount Retail Centre,  
Ballymount Road Upper, Dublin 24. D24X39K

Ph: 01 855 5200

[www.tilestyle.ie](http://www.tilestyle.ie)

**Free parking • Open 7 Days • Conveniently located just off the M50**