

Mutina

Tape by Raw Edges



EN

General information
Laying and maintenance tips
Colors
Technical features
Packing

General information

collection	Tape
design	Raw Edges, 2017
production	Industrial
material	Glazed porcelain stoneware
thickness	10 mm
nominal sizes	20,5-20,5 cm (8"-8")
specification	<ul style="list-style-type: none">- 2 base color: White and Black- 8 graphic patterns (full pattern)- 8 graphic "half patterns" to create connections and a soft blend on one pattern with the other- 5 combinations of base+colored patterns: 1 on Black base and 4 on White base- Though the tile is NON RECTIFIED the patterns are perfectly centered to obtain a continuous and homogeneous surface- 5 different glazing surface textures random mixed
patents	Registered design n° 004427748-0001/0027 – date of registration: 31/10/2017
category	UNI EN 14411 App G (BIA group) GL

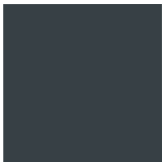


20,5-20,5 cm
8"-8"

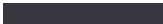
Laying and maintenance tips

use	Floor, wall – indoor, outdoor.
installation	For an even, smooth shading effect when laying, alternate material from several different boxes.
recommended adhesive	Adhesive for porcelain stoneware.
recommended joints	2mm joints. Use wedges to fix the caliber differences in work size between tiles.
recommended fillers	Cement-based grout / epoxy grout.
cleaning at the end of installation	<p>CEMENT-BASED GROUT: Buffered acid (e.g. DETERDEK PRO by FILA, or similar). Wet the floor with water, dilute the product 1:5 with water and pour it on the floor. Wait for 2 or 3 minutes then use a white scotch brite pad and rinse well with clean water.</p> <p>EPOXY GROUT: Alkaline detergent (e.g. FILA CR10 by FILA). FILA CR10: apply pure, wait for 30 minutes then use a green scotch brite pad.</p> <p>SILICONE: Solvent for silicone (e.g. FILA ZERO SIL.). Pour it straight onto the stain, wait for 20 minutes and remove the mark using scotch brite.</p> <p>PAINT: Can usually be removed using water, but if resin-based paints or particular enamels have been used, it is best to ask the manufacturer which solvent is most suitable.</p> <p>RUST: stain remover es. FILA NO RUST. Apply the product onto the stain, leave for 15 minutes, remove the residue and rinse thoroughly.</p>
general cleaning (installed tiles)	You are recommended to use ordinary neutral detergent diluted in water. Avoid using acid or alkaline products, waxes and/or impregnants. During ordinary cleaning it is recommended to use extremely abrasive items (such as scourers and iron or steel sponges) as little as possible. This recommendation must be adhered to rigorously in the case of tiles with a glossy surface finishing as they are more susceptible to the risk of scuffs, scratches and loss of shine, etc. In the event of heavy dirt or particularly textured surfaces, use an alkaline detergent and rinse after washing. For large surfaces, the use of a floor washing machine is recommended. During every-day cleaning procedures, it is necessary to remember that certain types of dirt (dust, sand) increase the abrasive effect of foot-traffic. Therefore we recommend that you avoid bringing in this type of dirt, which comes in from the outside, by placing a door-mat at the entrance.
calibers (real size)	20,5 cm x 20,5 cm non rectified with 2mm tolerance

Colors



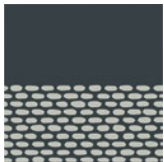
Base Black



grout: Nero 06



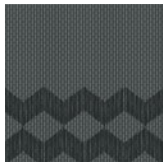
Mesh Half Black



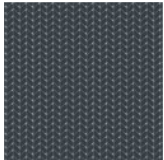
Cobble Half Black



Grainy Half Black



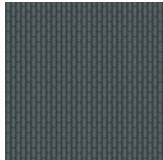
Zigzag Half Black



Mesh Black



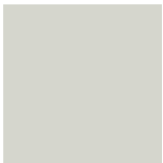
Cobble Black



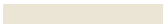
Grainy Black



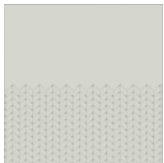
Zigzag Black



Base White



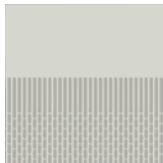
grout: Calce 01



Mesh Half White



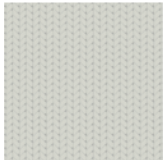
Cobble Half White



Grainy Half White



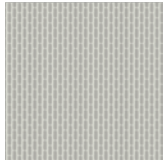
Zigzag Half White



Mesh White



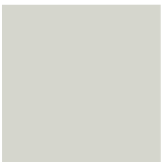
Cobble White



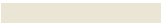
Grainy White



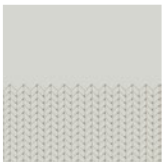
Zigzag White



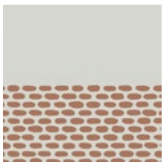
Base White



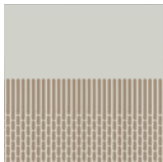
grout: Calce 01



Mesh Half Brown



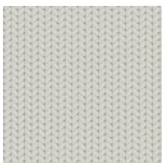
Cobble Half Brown



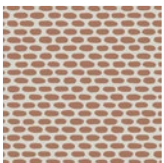
Grainy Half Brown



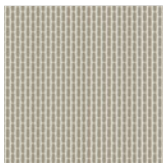
Zigzag Half Brown



Mesh Brown



Cobble Brown

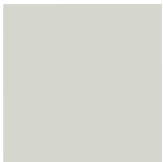


Grainy Brown



Zigzag Brown

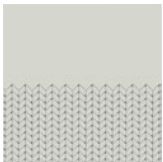
Colors



Base White



grout: Calce 01



Mesh Half Green



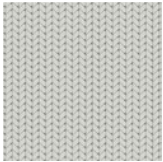
Cobble Half Green



Grainy Half Green



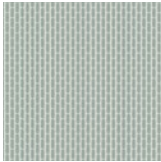
Zigzag Half Green



Mesh Green



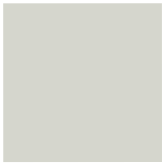
Cobble Green



Grainy Green



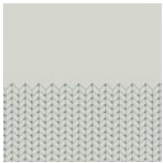
Zigzag Green



Base White



grout: Calce 01



Mesh Half Blue



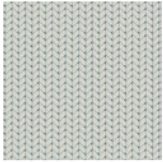
Cobble Half Blue



Grainy Half Blue



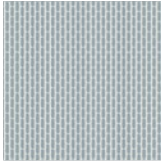
Zigzag Half Blue



Mesh Blue



Cobble Blue



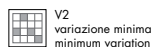
Grainy Blue



Zigzag Blue

Technical features

STANDARD	FEATURES	VALUE REQUIRED	TAPE
ISO 10545/3	water absorption	< 0,5%	0,06%
ISO 10545/4	breaking strenght	Sp ≥ 7,5 min 1300 N	resistant
ISO 10545/9	resistance to thermal shock	no visible alteration	resistant
ISO 10545/12	frost resistance	no visible alteration	resistant
ISO 10545/13	resistance to chemical attacks	no visible alteration	resistant
ISO 10545/14	stains resistance	minimum 3	5
DIN 51130-04	slip resistance	medium values 6÷10° R9 10÷19° R10 19÷27° R11 27÷35° R12 > 35° R13	R10
DIN 51097		–	–
DCOF		> 0,42	0,69
Pendulum AS/NSZ 4586-13			27 P2
LEED CERTIFICATION 4.1			20% recycled material
Robinson Test			heavy use (zig zag half white)
VOC Emission			available upon request
Declaration of Contents			available upon request
EPD			available upon request
SDS			available upon request
BPD3			available upon request
HPD			available upon request



Packing

SIZE	PCS-SQM	PCS-BOX	SQM-BOX	BOX-PAL	KG-BOX	KG-PAL	SQM-PAL
20,5-20,5 cm	23,88	16	0,67	96	14,20	1363,20	64,32