



BRAMPTON CHASE

G R E A T B R I T A I N

Luxury flooring

for every home
and lifestyle



SWATCH CARD
GLUEDOWN LVT COLLECTIONS

Classics

Thickness: 3mm
Wear Layer: 0.5mm
Pack Size: 3.26m²

Plank Size:
177.8 x 1219.2mm
7 x 48"

Type:
Gluedown
> Full spec sheet available online



Arctic Grey Oak CL013



Distressed Oak CL012



Farmhouse Oak CL011



Frosted Oak CL010



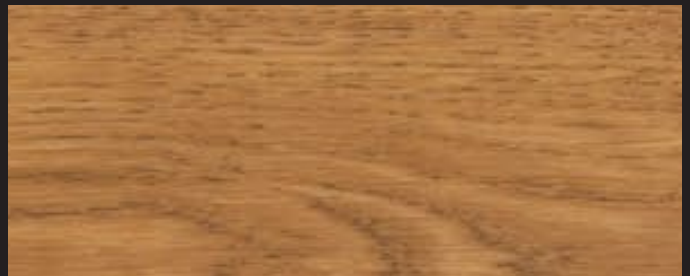
Limed Oak CL008



Manor Oak CL007



Oak Driftwood CL006



Old English Oak CL005



Royal Oak CL004



Silver Oak CL003



Weathered Oak CL002



White Painted Oak CL001

**Studio Designs is
a multi-format range**
available as a
stunning large plank or
contemporary herringbone



Blonde Oak, *Large Plank* CLD19 / *Herringbone* CLH19



California Oak, *Large Plank* CLD20 / *Herringbone* CLH20



Chicory Haze, *Large Plank* CLD16 / *Herringbone* CLH16



County Oak, *Large Plank* CLD18 / *Herringbone* CLH18



European Oak, *Large Plank* CLD17 / *Herringbone* CLH17



Smokey Bay, *Large Plank* CLD16 / *Herringbone* CLH16



Urban Dusk, *Large Plank* CLD14 / *Herringbone* CLH14

Woodlands

Thickness: 2mm
Wear Layer: 0.3mm
Pack Size: 4.77m²

Plank Size:
177.8 x 1219.2mm
7 x 48"

Type:
Gluedown
> Full spec sheet available online



Arden WD10



Ashby WD09



Brecon WD08



Darwin WD07



Glenmore WD06



Kielder WD05



Stowe WD04



Whinfell WD02



Winterfold WD01

STONES

Thickness: 2mm
Wear Layer: 0.3mm
Pack Size: 3.34m²

Tile Size:
304.8 x 457.2mm
12 x 18"

Type:
Gluedown
> Full spec sheet available online



Canyon STN06



Cotswold STN05



Dorset STN04



Henge STN03



Limestone STN02



Santorini STN01

STONES ULTRA

Thickness: 2.5mm
with Micro Bevel
Wear Layer: 0.55mm
Pack Size: 2.51m²

Tile Size:
304.8 x 457.2mm
12 x 18"

Type:
Gluedown
> Full spec sheet available online



Cityscape STU99



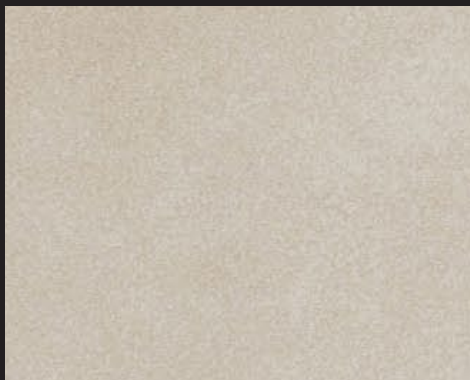
Deco Grey STU98



Provence STU96



Quay Mist STU95



South Beach STU97



Stones Ultra Deco Grey



BRAMPTON CHASE
GREAT BRITAIN

Design Strips

- Size: 3mm (W) 2mm (D) 914mm (L)
- 5 colours available.
- 'FS' designs contain 30 strips per pack
- '2031 Ice' contains 50 strips per pack

Suitable for use with Stones, Stones Ultra, Studio Designs and Woodlands collections only.
Please contact us about 3mm (D) design strips for Classics.

FS01 Cream

FS02 Grey

FS03 Carbon

FS04 Brown

2031 Ice

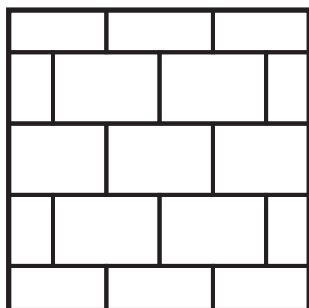
Design Strips Guide.

How to calculate your quantities.

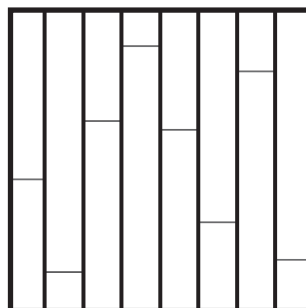
Suitable for use with Stones, Stones Ultra, Studio Designs and Woodlands collections only.
Please contact us about 3mm (D) design strips for Classics.

Design Effect	Suitable For	Design Strips FS01-FS04	Design Strips 2031 Ice
Grouting Line	Stones / Stones Ultra	1 pack of strips to every 1 pack of flooring	1 pack of strips to every 2 packs of flooring
Ships Decking	Studio Designs / Woodlands	2 packs of strips to every 3 packs of flooring	1.5 packs of strips to every 2 packs of flooring
Perimeter Border	All (exc Classics)	27.4 linear metres per pack	45.7 linear metres per pack

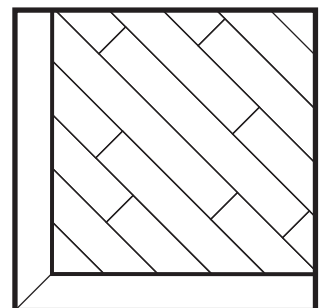
Popular Design Effects



Grouting Line



Ships Decking



Perimeter Border