



Push-In Flange Covers

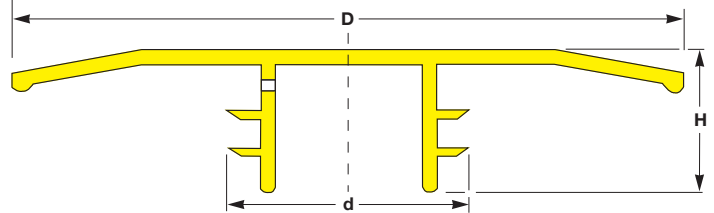
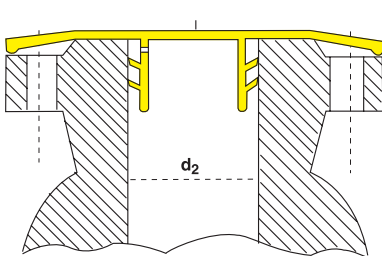
**EN 12351-A.1
DIN 3443, Form A
BASF WN 14-150, A**

All dimensions in mm

Dimensions Nom Ø	Dimensions			Standard Pack	Reference No.	
	Ø D	Ø d	H			
DN 10	.3/8"	86.0	14.0	15.0	1,000	EP 305 / DN 10
DN 15	.1/2"	90.0	19.0	15.0	1,000	EP 305 / DN 15
DN 20	.3/4"	100.0	24.0	15.0	700	EP 305 / DN 20
DN 25	1."	110.0	30.0	20.0	500	EP 305 / DN 25
DN 32	1.1/4"	136.0	39.0	20.0	300	EP 305 / DN 32
DN 40	1.1/2"	146.0	45.0	20.0	250	EP 305 / DN 40
DN 50	2."	160.0	56.0	20.0	200	EP 305 / DN 50
DN 65	2.1/2"	180.0	72.0	20.0	200	EP 305 / DN 65
DN 80	3."	196.0	85.0	25.0	150	EP 305 / DN 80
DN 100	4."	216.0	109.0	25.0	100	EP 305 / DN 100
DN 125	5."	246.0	134.0	25.0	75	EP 305 / DN 125
DN 150	6."	280.0	161.0	35.0	40	EP 305 / DN 150
DN 200	8."	336.0	210.0	35.0	40	EP 305 / DN 200
DN 250	10."	390.0	262.0	40.0	28	EP 305 / DN 250
DN 300	12."	450.0	318.0	48.0	20	EP 305 / DN 300
DN 400	16."	580.0	410.0	62.0	10	EP 305 / DN 400

NEW

Should your requirements not be shown please ask for separate quotation.
PROTEC products and specifications are subject to improvement and change without notice.



Example of application

Dimensions Nom Ø	← d ₂ →		Reference No.	DIN 2627 – 26 38 / BS 4504							ANSI B 16.5 / BS 1560					
	min.	max.		PN 10-16	PN 25-40	PN 64	PN 100	PN 160	PN 250	PN 300	PN 400	Cl. 150-300	Cl. 400	Cl. 600	Cl. 900	Cl. 1500
DN 10	.3/8"	9.0	13.6	EP 305 / DN 10												
DN 15	.1/2"	13.2	17.3	EP 305 / DN 15												
DN 20	.3/4"	19.5	22.3	EP 305 / DN 20												
DN 25	1."	24.0	28.5	EP 305 / DN 25	i. Ø Flange - Ø d ₂ / d ₂ = nom. bore							i. Ø Flange - Ø d ₂ / d ₂ = nom. bore				
DN 32	1.1/4"	30.0	37.2	EP 305 / DN 32												
DN 40	1.1/2"	37.8	43.1	EP 305 / DN 40												
DN 50	2."	48.0	54.5	EP 305 / DN 50												
DN 65	2.1/2"	63.5	70.3	EP 305 / DN 65												
DN 80	3."	76.0	82.5	EP 305 / DN 80												
DN 100	4."	97.0	107.1	EP 305 / DN 100												
DN 125	5."	118.0	131.7	EP 305 / DN 125												
DN 150	6."	148.0	159.3	EP 305 / DN 150												
DN 200	8."	184.0	208.0	EP 305 / DN 200												
DN 250	10."	238.0	260.4	EP 305 / DN 250												
DN 300	12."	285.0	315.0	EP 305 / DN 300												
DN 400	16."	355.0	408.0	EP 305 / DN 400												

NEW

Should your requirements not be shown please ask for separate quotation.
PROTEC products and specifications are subject to improvement and change without notice.

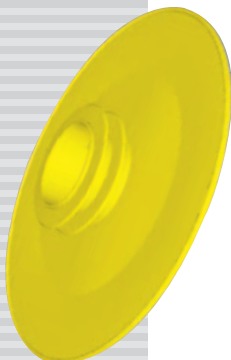
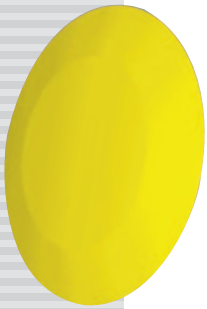


Phone (0191) 442 4242



STANDARD RANGE

EP 305





Push-In Flange Covers

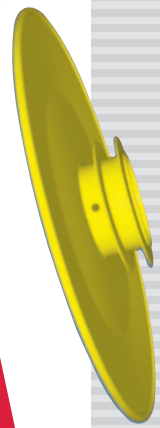
The EP 305 Flange Covers correspond to the highest approval requirements throughout the Chemical Industry. The innovative design offers universal protection to the following specifications:

DIN 2627-2638
ISO
BS 1560
BS 4504
ANSI B 16.5

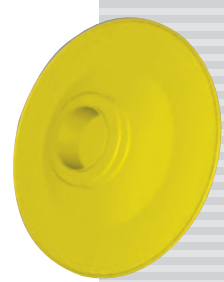
EX STOCK
250 m
Parts
DELIVERY SERVICE

STANDARD RANGE

EP 305



NEW
16"
DN 400



Material : low density polyethylene
 Colour : yellow