



Introducing the DimpleChair™...

CLASSIC EGG SHAPE

Designed for comfort and style, based on the familiar, free standing egg-shaped chair, a proven design with a new twist.

LUXURY VEGAN LEATHER:

The quilted lining is made using vegan leather and finished with a woven quilt pattern to create a durable, comfortable & stylish seat.



ICONIC GOLF BALL DESIGN:

Our dimple effect shell, is made from a high-gloss, moulded plastic to produce the perfect golf ball-esq style.

The DimpleChair is a highly durable and fun addition to any home, workplace or event, but to enjoy the chair please ensure that you use it with care. Contact with sharp and abrasive objects may damage the shell or upholstery.

Treat your chair like the last ball in your bag on the 3rd tee...use it wisely, caress it gently when in play, always be sure to wipe it clean with a damp cloth after use to maintain it's pristine appearance, talk to it kindly and show how much you care about it and never ever submerge it in water ;)

How to unpack and assemble your new DimpleChair™.

Note: your new DimpleChair is both heavy and fragile so take care to read the instructions carefully to ensure that you don't damage your chair during assembly. We recommend that you use at least 2 people to unpack and assemble your chair safely.

1: Give it some space

Make sure that you unpack your chair in a room with plenty of space to manoeuvre. You will need room to remove the chair from the carton, place on a safe surface and stand upright.

2: Opening

Open the carton carefully, making sure that the carton is kept upright and that when removing the packing tape you don't scratch or damage the contents. Remove the polystyrene lid and the metal foot stand.

3: The foot stand

The 5 prong, aluminum foot stand is wrapped in a bubble wrap and has attached to it the upright and an allen key tool in a plastic packet. Remove the upright, tool and protective wrapping. DO NOT INSERT THE UPRIGHT INTO THE STAND AS ONCE INSERTED IT'S VERY DIFFICULT TO REMOVE.

4: The chair

Using two people. Lift the chair from the packaging and rest carefully onto a safe surface (you can use the polystyrene lid), keeping the chair in the same position as in the box.

5: Upright

Insert the stainless steel upright into the aperture at the base of the chair, putting the narrow end in to the chair.

6: Feet

Align the five prong foot stand on to the other end of the upright. Push down firmly. MAKE SURE THE RUBBER FEET ON THE FIVE PRONG FOOT STAND ARE FACING AWAY FROM THE BASE OF THE CHAIR.

7: Erect

Using two people, carefully lift the chair off and clear of the safe surface and stand upright. BE CAREFUL NOT TO TIP OR ROLL THE CHAIR AS THIS MAY DAMAGE THE UPHOLSTERY OR DIMPLE SURFACE.

Remove the safety packing and sit carefully on your new chair to ensure the stand and upright are all aligned and firmly in place before use.

The tool contained in the the packet can be used to insert into the smaller hole beneath the seat to adjust the strength or recline of the chair.



How to use your DimpleChair™.

We want you to enjoy your DimpleChair as much as we have enjoyed designing it. Here's just some of the ways that you may choose...

The Working From Home Chair



The Reader



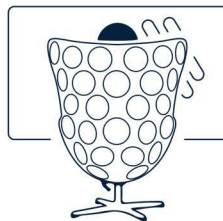
The Spin As Fast As You Can Chair



The Zen Master



The Gamer



The Lounger



The Bond Villain



The Listener



The Dreamer



Thank You

Thanks for choosing the DimpleChair™. You're obviously someone with incredible taste and we're excited that you have joined the Dimple family.

Your new chair is designed with you in mind, wonderful to look at and even better to sit in, the Dimple design team have created a new modern classic, using the best materials to balance design and style with comfort.

We're passionate about Golf and iconic design and we hope that if you share our love of the game and beautiful aesthetics that DimpleChair will add to your enjoyment of golf too. Whether used at home or in the office, be prepared for the positive comments and envious looks from friends and visitors... you are now the proud owner of one of the most talked about chairs in the world!

We can't guarantee that a DimpleChair will improve your handicap but it should certainly make you feel just like a 300 yard drive, hitting the centre of the fairway, a long iron landing within inches of the pin, or when you sink that 25ft monster putt...incredibly lucky!!!

Enjoy your chair and welcome to the Dimple family.

MARK BEATTIE
THE DIMPLE GUY



Care for your chair.

Your DimpleChair is made from high-quality fire retardant materials and manufactured to the highest standards to ensure it arrives with you in perfect condition and built to last.

To care for your chair beware that the Dimple shell will scratch if it comes into contact with an abrasive surface, so when setting up your chair be sure to place away from walls, and other surfaces likely to damage or scuff the surface.

When required the Dimple shell and upholstery can be cleaned with a damp cloth, avoid using abrasive detergents or bleaches which may discolor the appearance of your chair.

Care for you.

Your DimpleChair is designed to offer an upright or reclined seating position as well as a 360° rotation.

These features are for your comfort and are not intended to be used entirely for fun (we all love spinning too, but users do so at their own risk). Be careful when first sitting in the chair to appreciate the reclining position and rotation. We recommend that you never sit more than one person on the chair at a time or spin rapidly. Always ensure the chair is placed on a firm, level and static surface before using.

We want you to enjoy your chair but more importantly we want you to remain safe. Use the DimpleChair wisely.