

# APP Connection Guide

## Setting the APP

### Step 1:

Scan the QR Code or search "Smart Life" or "Tuya Smart" on App store or Google Play to download and install the APP for iOS / Android.

The mobile phone system version needs to be Android 5.0 and iOS 9.0 or above.



### Step 2:

Run "Smart Life" or "Tuya Smart" app on your phone, then tap "sign up" to create an account with Email address (if you already had one, please log in), and verify your account with verification code which has sent to your email.

### Step 3:

Log in your account and follow the App instructions to create a "Family" and later follow below instructions to add devices to your "Family".

## Bluetooth Configuration

### Step 1:

Before connecting, please make sure your smart phone is connecting with your home Wi-Fi(2.4GHz) successfully and enable the Bluetooth feature.

### Step 2:

To Connect in Bluetooth mode, the strip lights needs to be set to blinks rapidly. (You can learn the detailed instruction on How to set light as rapidly flashing section).

### Step 3:

Open APP and click "+" to add device, then tap "Auto Scan"

### Step 4:

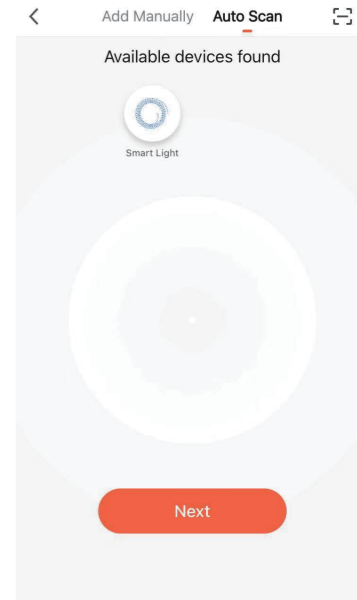
Follow the in-APP instructions to connect the strip lights to your Wi-Fi network, Please note the device only works at 2.4GHz Wi-Fi.

### Step 5:

Once Connected, the APP will prompt the connection. Then Click "Completed".

### Step 6:

Now you can control the lights through the APP

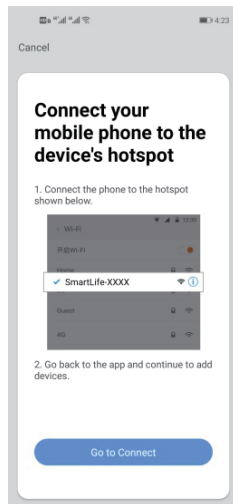


## Quick Mode Configuration(EZ mode)

- 1.Before connecting, please make sure your smart phone is connecting with your home Wi-Fi (2.4GHz) successfully.
- 2.To connect in EZ mode, the strip lights needs to be set to blinks rapidly. (You can learn the detailed instruction on How to set light as rapidly flashing section).
- 3.Open APP and click "+" to add device.
- 4.Follow the in-APP instructions to connect the strip lights to your Wi-Fi network, Please note the device only works at 2.4GHz Wi-Fi.
- 5.Once connected, the APP will prompt the connection. Then click "Completed".
- 6.Now you can control the lights through the APP.

## AP (Access Point) Mode Configuration

- 1.Before connecting, please make sure your smart phone is connecting with your home Wi-Fi (2.4GHz) successfully.
- 2.To connect in AP mode, the strip lights needs to be set to blinks Slowly. (You can learn the detailed instruction on "How to set light as slowly flashing" section)



- 3.Click the ICON "+" at the top right corner of the APP.
- 4.Select device type and click AP mode to add device.
- 5.Go to Wi-Fi setting in your smart phone and select the "Smart Life-XXX" for your Wi-Fi.
- 6.Once connected successfully, the APP will prompt the connection, and click "Completed"

## How to set light as rapidly flashing

### Method 1

- Step 1** Power on device
- Step 2** Turn off(>5s)-on(<5s)-off(>5s)-on(<5s)-off(>5s)-on
- Step 3** Confirm LED light is now rapidly flashing

### Method 2 (If your control box has a button)

- Step 1** Power on device
- Step 2** Hold the power button for 5S
- Step 3** Confirm LED light is now rapidly flashing

### Method 3

- Step 1** Power on device
- Step 2** Press the ON or ON/OFF button on remote for 5 seconds
- Step 3** Confirm LED light now rapidly flashing.

## How to set light as slowly flashing

### Method 1

- Step 1** Power on device
- Step 2** Turn off(>5s)-on(<5s)-off(>5s)-on(<5s)-off(>5s)-on
- Step 3** Confirm LED light is now rapidly flashing
- Step 4** Operate again: Turn off(>5s)-on(<5s)-off(>5s)-on(<5s)-off(>5s)-on until light is slowly flashing.

### Method 2 (If your control box has a button)

- Step 1** Power on device.
- Step 2** Hold the power button for 5 seconds
- Step 3** Confirm LED light now rapidly flashing.
- Step 4** Operate again: Hold the power button for 5 seconds until light is slowly flashing.

### Method 3

- Step 1** Power on device.
- Step 2** Press the ON or ON/OFF button on remote for 5 seconds
- Step 3** Confirm LED light now rapidly flashing.
- Step 4** Operate again: Press the ON or ON/OFF button on remote for 5 seconds until light is slowly flashing.

## How to connect lights to AmazonAlexa / Google Assistant

You can learn the detailed instruction on "Me->More Services" page of the APP. Tap the corresponding service to learn more and how to set up.

