

These installation instructions show an example installation on a 2021 Ram 1500 & 2500 truck. The installation may vary for your vehicle, so it may be necessary to consult a Ram service manual for specific instructions for your year model.

Tools needed: T-20 Torx Screwdriver, 7mm nut driver or socket, phillips head screwdriver, and trim removal tools (optional)

In-Line Speedometer Calibrator Module Software Setup Instructions

1. UPDATE

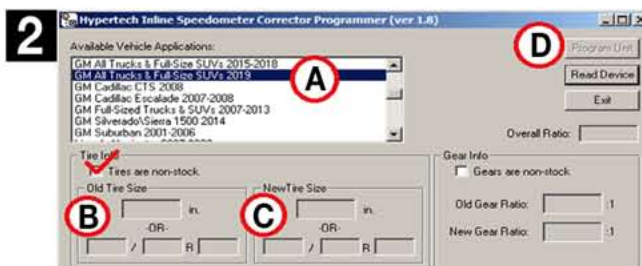
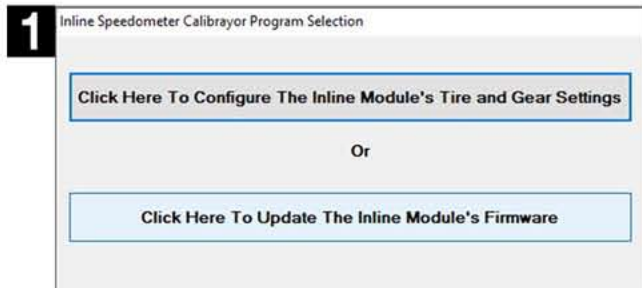
This step makes sure that the In-Line Speedometer Calibrator Module has the latest firmware installed. If the Tuner Update Software is not already installed on your PC, go to our website (hypertech.com) and download the Tuner Update Software. Connect the In-Line Speedometer Calibrator Module to your PC with the supplied USB cable, run the update software and click the Update Tuner button.

2. CONFIGURE

For accurate readings, measure the stock and new tire height from the ground to the top of the tire. Enter these measurements (in inches) into the configuration software, and click program to commit these settings. Once configuration is complete, take the In-Line Speedometer Calibrator Module and harness to the vehicle.

3. CONNECT

Securely connect the In-Line Speedometer Calibrator Module to the In-Line Speedometer Calibrator harness.

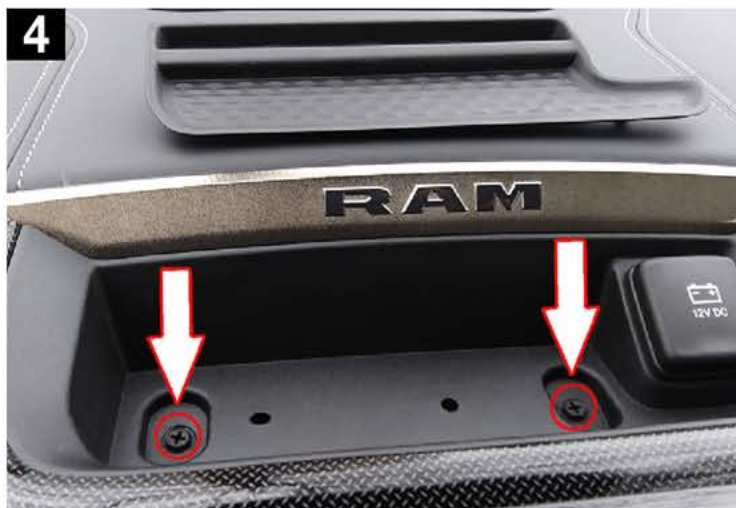


In-Line Speedometer Calibrator Module Vehicle Installation Instructions

1. Move the driver's seat back as far as possible, Move the steering wheel down, and if it telescopes, move it all the way toward the rear of the vehicle. Depending on the turn signal indicator stalk and gear lever, you may need to move the steering wheel to access the various screws on the dust cover and/or instrument cluster.
2. Disconnect the negative terminal on the truck battery **BEFORE** performing the following steps.
3. To remove the instrument cluster bezel, use a trim removal tool or similar to first pull down on the top until the three (3) tabs are loose. Next, pull the top corners toward the rear of the truck. Finally, hold the sides of the bezel and pull toward the rear of the truck.



4. Lift out the rubber mat from the top of the instrument panel (touchscreen). Remove the two (2) screws. Some trucks require a T-20 torx driver while others require either a phillips head screwdriver or a 7mm socket.



5. To reduce the risk of damaging the instrument panel/touchscreen/surround when removing, place padding on the center console. Gripping the instrument panel/touchscreen surround by the top storage area, pull toward the rear of the truck to remove it from the dash of the truck. Gently and securely set the touchscreen/surround off to the side and out of the way. No plugs will need to be removed.



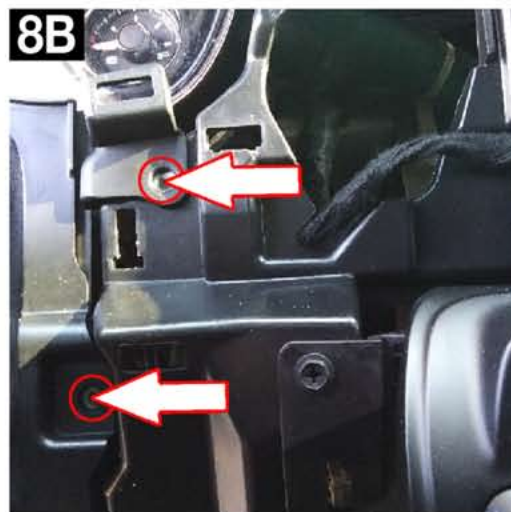
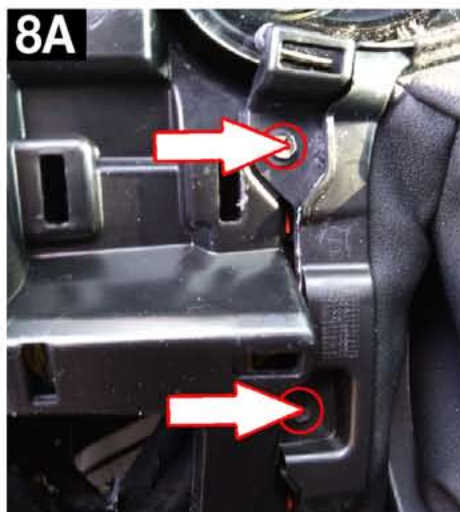
6. **This step is for the Ram 1500 ONLY.** Remove the lower knee panel directly under the steering wheel by removing the two (2) 7mm bolts. Pull the panel toward the rear of the truck to release the tabs holding the panel in place.



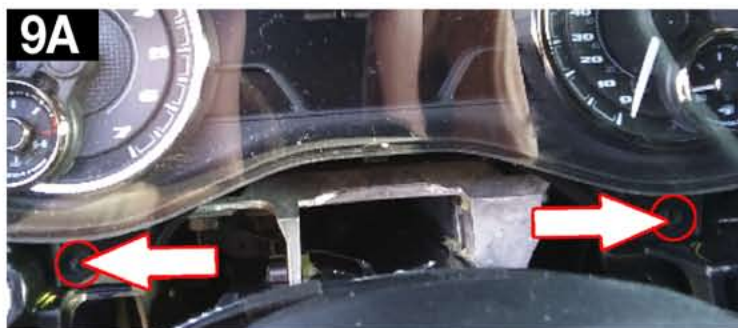
7. Remove the four (4) pieces of trim beside/around the steering wheel. The upper pieces of trim have clips at the bottom, but hooks at the top.



8. Remove the two (2) screws holding the cloth dust cover over the steering column (2500/3500). The Ram 1500 will have four (4) screws holding the cloth dust cover in place (shown below). With all screws removed, gently pull up and out to remove the dust cover. This will reveal the two (2) lower 7mm bolts holding the instrument cluster in place.



9. Remove the two (2) lower 7mm bolts and two (2) upper 7mm bolts holding the instrument cluster in place.



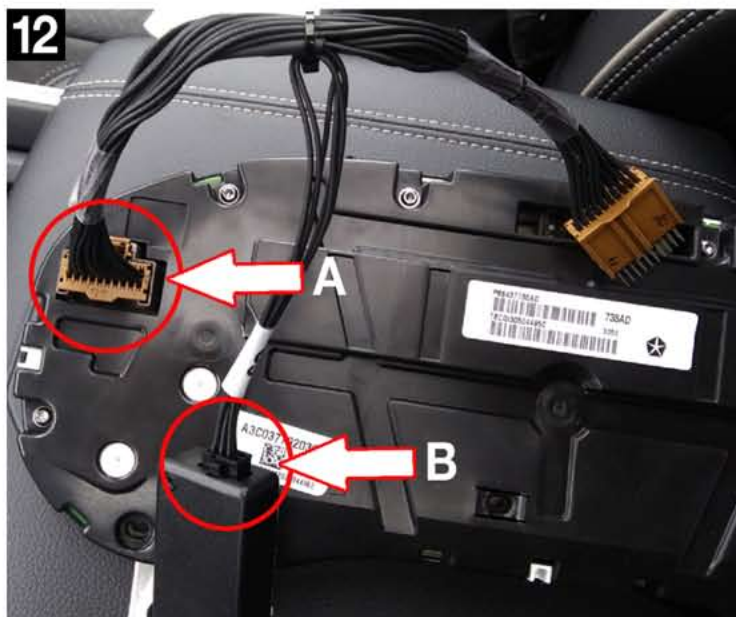
10. **POWER OFF** the vehicle for ten (10) minutes with the ignition key out of proximity of the vehicle to ensure the HSCAN bus powers down completely.



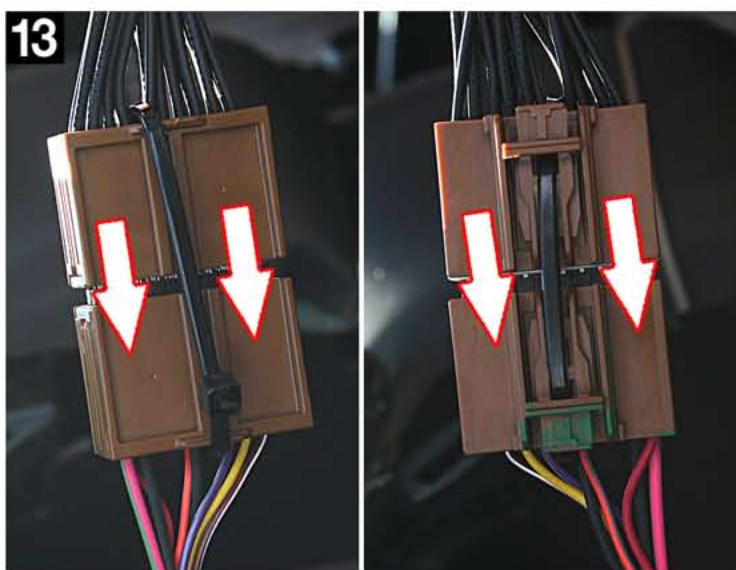
11. Lean the cluster forward and gently pull out until the brown, 20-pin connector on the rear is visible. Push the tab, and wiggle from side-to-side to remove the connector from the cluster.



12. Insert the female end of the harness into the connector on the back of the instrument cluster (A). Then connect the black Molex connector to the Hypertech In-Line Speedometer Calibrator Module (B).



13. Plug in the male connector of the Hypertech In-Line Speedometer Calibrator Module harness to the connector on the vehicle harness, taking care to match like sides of the connectors. Secure the harness connectors with the supplied zip tie as shown.



14. Securely position the In-Line Speedometer Calibrator harness and module in the cavity behind the instrument cluster.



15. Reconnect the negative battery terminal and secure the instrument cluster ONLY with the four (4) 7mm mounting bolts. Start the vehicle to check for any warning lights or messages. Test drive the vehicle to ensure proper speedometer function and accuracy. Recalibrate if necessary.
16. Re-Install all dash panels and trim pieces in reverse order of disassembly. Your installation is now complete!



1 Year Factory Direct Limited Warranty*

Hypertech products are warranted against defects in materials or workmanship for one year from the date of purchase. Hypertech's liability under this warranty shall be limited to the prompt correction or replacement of any defective part of the product which Hypertech determines to be necessary. This limited one (1) year warranty is to the original purchaser providing all the information requested is furnished. You must retain a copy of your original sales invoice or receipt. Without proper documentation, a service fee will be applied. **Third party resellers and resold units are NOT covered under this warranty.**

* Effective date: 1.20



30-Day Risk-Free, Money Back Guarantee*

The 30-day money back guarantee applies to all Max Energy Spectrum Power Programmers, React Throttle Optimizers, Max Energy 2.0 Power Programmers, Max Energy Power Programmers, Interceptors, Speedometer Calibrators, In-Line Speedometer Calibrator Modules, and Power Chips for GM. The product MUST be returned to the place of purchase within thirty (30) days. All items must be received in a new, unused and ready-to-sell condition (including all original packaging, parts, and paperwork) to receive a refund, excluding any shipping and handling fees. **Units purchased used or reconditioned from a non-authorized Hypertech dealer, or units sold by 3rd-party vendors (i.e. ebay) are NOT covered under this guarantee.**

End of Instructions