



HYPERTECH



STEP BY STEP INSTALLATION INSTRUCTIONS

2022 Nissan Frontier 3.8

Part #730126*

Visit our YouTube
channel for detailed
installation instructions



* Not legal for sale/use in CA. CARB E.O. pending.

Technical assistance: 901.382.8888 • techsupport@hypertech.com • hypertech.com

© 2022 Hypertech

These installation instructions show an installation on a 2022 Nissan Frontier. The installation may vary for your vehicle, so it may be necessary to consult a Nissan service manual for specific instructions for your year model.

Tools needed: Phillips head screwdriver and trim removal tools

In-Line Speedometer Calibrator Module Software Setup Instructions

1. UPDATE

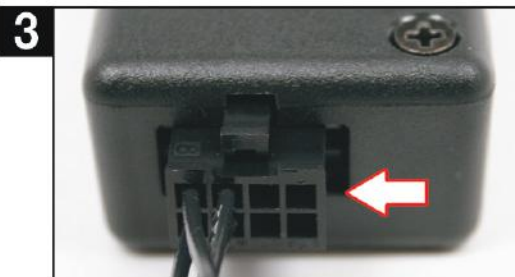
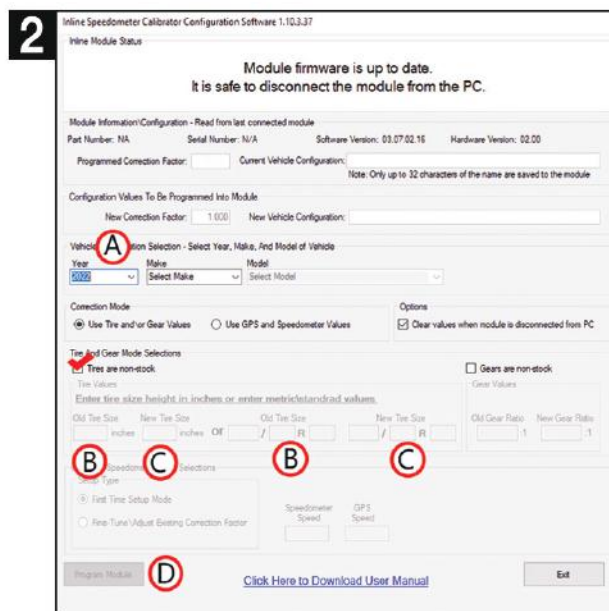
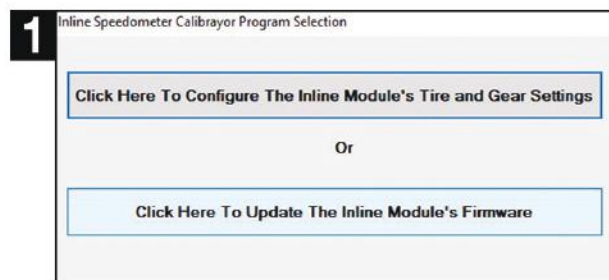
This step makes sure that the In-Line Speedometer Calibrator Module has the latest firmware installed. If the Tuner Update Software is not already installed on your PC, go to our website (hypertech.com) and download the Tuner Update Software. Connect the In-Line Speedometer Calibrator Module to your PC with the supplied USB cable, run the update software and click the Update Tuner button.

2. CONFIGURE

For accurate readings, measure the stock and new tire height from the ground to the top of the tire. Enter these measurements (in inches) into the configuration software, and click program to commit these settings. Once configuration is complete, take the In-Line Speedometer Calibrator Module and harness to the vehicle.

3. CONNECT

Securely connect the In-Line Speedometer Calibrator Module to the In-Line Speedometer Calibrator harness.



In-Line Speedometer Calibrator Module Vehicle Installation Instructions

1. Move the driver's seat back as far as possible. Move the steering wheel down, and if it telescopes, move it all the way toward the rear of the vehicle. Also make sure the emergency brake is fully engaged to better access removal of the driver's side kick panel.

2. Disconnect the negative terminal on the vehicle battery BEFORE performing the following steps.

3. REMOVE THE DRIVER'S SIDE KICK PANEL & DOOR SILL

Fully engage the emergency brake for easier removal. First remove the driver's side door sill by firmly pulling up (Step 3). Then firmly pull the kick panel to remove it from the vehicle (Step 3A). There will be one (1) small pushpin at the firewall that will come out with the kick panel.



In-Line Speedometer Calibrator Module Vehicle Installation Instructions (Cont'd)

4. REMOVE PHILLIPS HEAD SCREW NEAR HOOD RELEASE

Using a phillips head screwdriver, remove the one (1) screw near the hood release.



5. REMOVE LOWER DASH TRIM PIECE

Using a pry tool, gently loosen the clips holding the lower trim piece to the vehicle. Then firmly pull the lower dash trim piece to separate it from the dash. There is no need to unplug any of the plugs attached to it, just let the lower dash trim piece hang down as shown.



In-Line Speedometer Calibrator Module Vehicle Installation Instructions (Cont'd)

6. LOOSEN & PULL A-PILLAR COVER AWAY FROM THE A PILLAR

To better access loosening the A pillar cover, push in on the rubber door seal to better access the edge of the A pillar cover so you can firmly pull to loosen it from the vehicle. **DO NOT unplug any of the air bag plugs behind the cover.** The A pillar cover will safely hang down without removing it.



7. REMOVE THE SPEEDOMETER CLUSTER BEZEL/TRIM PIECE

Using a pry tool, gently loosen the clips holding the speedometer cluster/bezel to the vehicle. Pull firmly toward you to remove the speedometer cluster/bezel from the vehicle. **This trim piece DOES include the A/C vent on the driver's side.**



In-Line Speedometer Calibrator Module Vehicle Installation Instructions (Cont'd)

8. REMOVE SPEEDOMETER CLUSTER FROM DASH

Using a phillips head screwdriver, loosen & remove the four (4) screws attaching the speedometer cluster to the dash. This will give you access to behind the speedometer cluster for installing the In-Line Speedometer Calibrator Module.



9. POWER OFF the vehicle for ten (10) minutes with the ignition key out of proximity of the vehicle to ensure the HSCAN bus powers down completely.



In-Line Speedometer Calibrator Module Vehicle Installation Instructions (Cont'd)

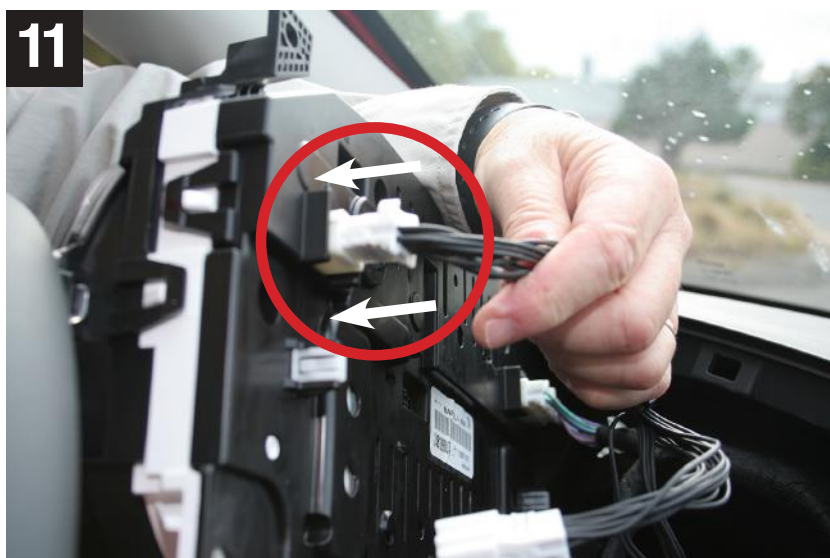
10. UNPLUG CONNECTOR FROM BEHIND THE SPEEDOMETER CLUSTER

Unplug the factory connector from behind the speedometer cluster.



11. PLUG IN-LINE SPEEDOMETER CALIBRATOR CONNECTOR TO SPEEDOMETER CLUSTER

Plug in the female connector from the In-Line Speedometer Calibrator harness into the back of the speedometer cluster.



In-Line Speedometer Calibrator Module Vehicle Installation Instructions (Cont'd)

12. PLUG IN-LINE CONNECTOR TO VEHICLE HARNESS CONNECTOR

Plug in the male connector of the Hypertech In-Line Speedometer Calibrator Module harness to the female connector on the vehicle harness.



13. Securely position the In-Line Speedometer Calibrator in the cavity behind the instrument cluster.

14. Connect the provided USB connector to the In-Line Speedometer Calibrator and route it behind the instrument cluster and down to the lower knee panel. Secure it safely out of the way of your feet and pedals. This will allow for simple and easy updates to the In-Line Speedometer Calibrator in the future should you change your tire size again.



15. Reconnect the negative battery terminal and secure the instrument cluster with the four (4) phillips head screws. Also re-install the lower dash trim piece and A-pillar cover. Start the vehicle to check for any warning lights or messages. Test drive the vehicle to ensure proper speedometer function and accuracy. Recalibrate if necessary.

16. Re-Install all other dash panels and trim pieces in reverse order of disassembly.

8

Installation of the Hypertech In-Line Speedometer Calibrator Module is now complete! Now get out there and enjoy your Frontier!

Factory Direct Limited 1 Year Warranty

(Effective January 1, 2020 replaces and supersedes previous product warranty policy.)

Hypertech products are warranted against defects in materials or workmanship for one (1) year from the date of purchase. Hypertech's liability under this warranty shall be limited to the prompt correction or replacement of any defective part of the product which Hypertech determines to be necessary. This limited one (1) year warranty is to the original purchaser providing all the information requested is furnished. You must retain a copy of your original sales invoice or receipt. Without proper documentation, a service fee will be applied. **Third party resellers and resold units are NOT covered under this warranty.**

30-Day Risk-Free, Money Back Guarantee

(Effective January 1, 2020)

The 30-day money back guarantee applies to all Max Energy Spectrum Power Programmers, React Throttle Optimizers, Max Energy 2.0 Power Programmers, Max Energy Power Programmers, Interceptors, Speedometer Calibrators, In-Line Speedometer Calibrator Modules, and Power Chips for GM. The product **MUST** be returned to the place of purchase within thirty (30) days. All items must be received in a new, unused and ready-to-sell condition (including all original packaging, parts, and paperwork) to receive a refund, excluding any shipping and handling fees. **Units purchased used or reconditioned from a non-authorized Hypertech dealer, or units sold by 3rd-party vendors (i.e. ebay) are NOT covered under this guarantee.**

Contact Info

Hypertech Tech Department

Phone: 901.382.8888

Fax: 901.373.5290

techsupport@hypertech.com

Office Hours: Monday-Friday, 8am-5pm Central Time

hypertech.com

Hypertech

7375 Adrienne Place

Bartlett, Tennessee 38133

hypertech.com