

These installation instructions show an example installation on a 2021 Ford F150. The installation may vary for your vehicle, so it may be necessary to consult a Ford service manual for specific instructions for your year model.

Tools needed: 7mm nut driver or socket and trim removal tools (optional)  
Be advised: These instructions may not include specifics for all vehicle configurations.

## In-Line Speedometer Calibrator Module Software Setup Instructions

### 1. UPDATE

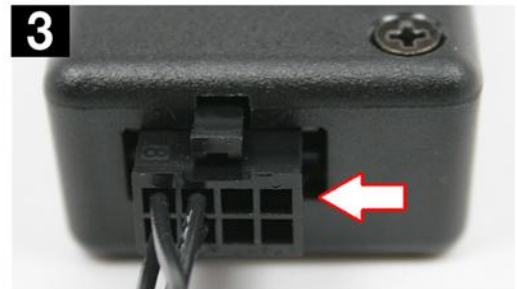
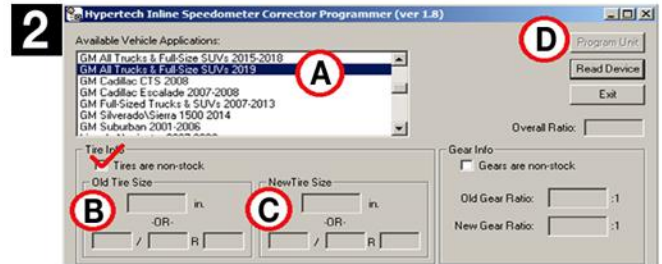
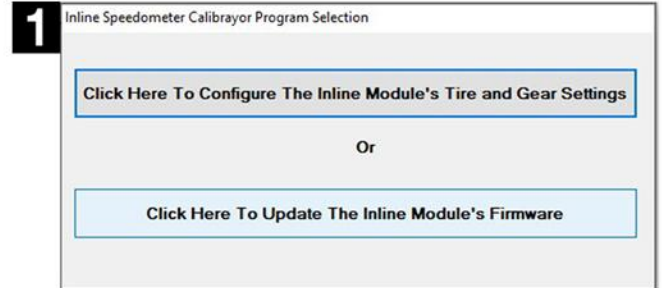
This step makes sure that the In-Line Speedometer Calibrator Module has the latest firmware installed. If the Tuner Update Software is not already installed on your PC, go to our website (hypertech.com) and download the Tuner Update Software. Connect the In-Line Speedometer Calibrator Module to your PC with the supplied USB cable, run the update software and click the Update Tuner button.

### 2. CONFIGURE

For accurate readings, measure the stock and new tire height from the ground to the top of the tire. Enter these measurements (in inches) into the configuration software, and click program to commit these settings. Once configuration is complete, take the In-Line Speedometer Calibrator Module and harness to the vehicle.

### 3. CONNECT

Securely connect the In-Line Speedometer Calibrator Module to the In-Line Speedometer Calibrator harness.



### In-Line Speedometer Calibrator Module Vehicle Installation Instructions

1. Set parking brake in case you need to move the shift lever from the Park position to facilitate the instrument cluster removal. Adjusting the steering column down and out will help as well.
2. Place masking tape, a towel or t-shirt over the steering column, wiper stalk, shift lever and the lower portion of the instrument cluster to protect them from damage or scratches.
3. The instrument cluster shroud is made up of two (2) pieces, an outer trim and a center section that covers the steering column. First remove the column shroud by grabbing on one side and pulling up on the front with your thumb as shown below and disengage both sides.



4. Next disconnect the vinyl column cover from the steering column itself. Reach under the backside of the cover and gently pull up, it will disconnect from the steering column rather easily. Completely remove this piece.

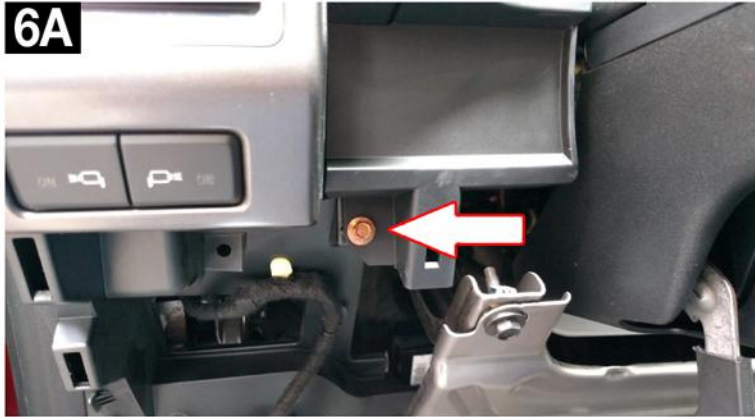




5. Raise steering column up to the highest position and reach behind the kick panel on the left and right side of the column and pull towards you to disengage the upper retaining clips. This allows access to the screws that retain the instrument cluster shroud.



6. With the kick panel lowered, remove the two (2) 7mm screws that retain the instrument cluster shroud.



7. Remove the instrument cluster shroud by grasping the upper left and right sides and pulling towards yourself.



8. With access to the instrument cluster achieved, remove the four (4) 7mm screws that retain it.





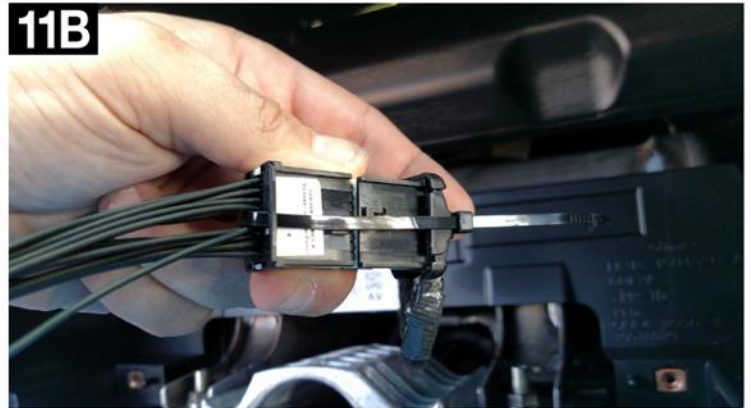
9. **POWER OFF** the vehicle for ten (10) minutes with the ignition key out of proximity of the vehicle to ensure the HSCAN bus powers down completely.



10. Slide the instrument cluster out and remove the connector from the back side. Press the tab in the middle above the arrow and remove. Slide the instrument cluster out.



11. Plug the male side of the In-Line Speedometer Calibrator Module harness into the factory instrument cluster connector as shown. Make sure that the locking tabs are both facing upright and slide a zip tie through the retaining tabs and through the hole on the bottom of the In-Line Speedometer Calibrator Module harness connector to ensure they do not become disconnected.



12. For the F150, tuck the harness and module on top of the air duct that runs inside of the instrument cluster cavity to gain clearance for installation. For the F250, access to the top of the duct is limited so insert the harness and module below and orientate them sideways.





13. Slide the instrument cluster back into the cavity and insert the In-Line Speedometer Calibrator Module harness into the instrument cluster. When sliding the instrument cluster back, be aware of the harness routing, access is limited and the harness and module must be tucked above or below the A/C ducting or the instrument cluster will not fit.
14. **Re-install the instrument cluster and dash trim in reverse of removal process shown earlier in this installation.** Be gentle with the vinyl steering column shroud cover, the retaining pins are easily deformed.
15. Start the vehicle and check for any warning signs or messages. Test drive the vehicle to ensure proper speedometer function. Your installation is now complete!



### 1 Year Factory Direct Limited Warranty\*

Hypertech products are warranted against defects in materials or workmanship for one year from the date of purchase. Hypertech's liability under this warranty shall be limited to the prompt correction or replacement of any defective part of the product which Hypertech determines to be necessary. This limited one (1) year warranty is to the original purchaser providing all the information requested is furnished. You must retain a copy of your original sales invoice or receipt. Without proper documentation, a service fee will be applied. **Third party resellers and resold units are NOT covered under this warranty.**

\* Effective date: 1.20



### 30-Day Risk-Free, Money Back Guarantee\*

The 30-day money back guarantee applies to all Max Energy Spectrum Power Programmers, React Throttle Optimizers, Max Energy 2.0 Power Programmers, Max Energy Power Programmers, Interceptors, Speedometer Calibrators, In-Line Speedometer Calibrator Modules, and Power Chips for GM. The product **MUST** be returned to the place of purchase within thirty (30) days. All items must be received in a new, unused and ready-to-sell condition (including all original packaging, parts, and paperwork) to receive a refund, excluding any shipping and handling fees. **Units purchased used or reconditioned from a non-authorized Hypertech dealer, or units sold by 3rd-party vendors (i.e. ebay) are NOT covered under this guarantee.**

*End of Instructions*