

These installation instructions show an example installation on a Toyota Tundra. The installation may vary for your vehicle, so it may be necessary to consult a Toyota service manual for specific instructions for your year model. Be advised that these instructions may not include specifics for all vehicle configurations.

Tools needed: 8mm and 10mm nut driver or socket, phillips screwdriver, and trim removal tools (optional)

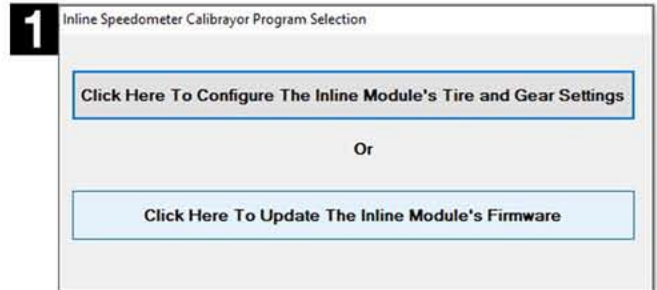
In-Line Speedometer Calibrator Module Software Setup Instructions

1. UPDATE

This step makes sure that the In-Line Speedometer Calibrator Module has the latest firmware installed. If the Tuner Update Software is not already installed on your PC, go to our website (hypertech.com) and download the Tuner Update Software. Connect the In-Line Speedometer Calibrator Module to your PC with the supplied USB cable, run the update software and click the Update Tuner button.

2. CONFIGURE

For accurate readings, measure the stock and new tire height from the ground to the top of the tire. Enter these measurements (in inches) into the configuration software, and click program to commit these settings. Once configuration is complete, take the In-Line Speedometer Calibrator Module and harness to the vehicle.



In-Line Speedometer Calibrator Module Vehicle Installation Instructions

1. On the driver's side, remove the floor panel and kick panel.



2. Remove the two (2) 10mm bolts from the lower IPC (instrument panel cluster) trim bezel.



3. Starting on the left hand side, gently separate the lower IPC trim bezel and let it hang down. There is no need to remove any wiring connectors.



4. Remove the A/C vent on the driver's side.



5. Remove the trim piece below the driver's side A/C vent removed in Step 4.



6. Remove the trim piece on the lower right side of the dash and let it hang. There is no need to remove the wiring connectors.



7. Remove the trim piece directly above the trim piece removed in Step 6.



8. Loosen and remove the trim piece that surrounds the IPC using a phillips screwdriver or an awl. Push in on the center of the two (2) retaining clips located at the top of the trim panel. Once you push in the center of the retaining clips they can be removed and then the trim piece can be removed.



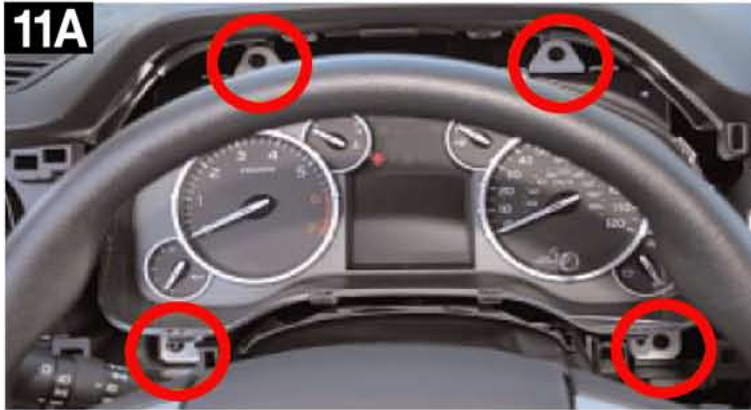
9. Between the steering column and bezel, notice there is a curtain that is held in place by a plastic strip. Utilizing the opening in the bezel use your fingers to press down on the four (4) locking tabs, this will release the curtain from the bezel. Then remove the bezel.



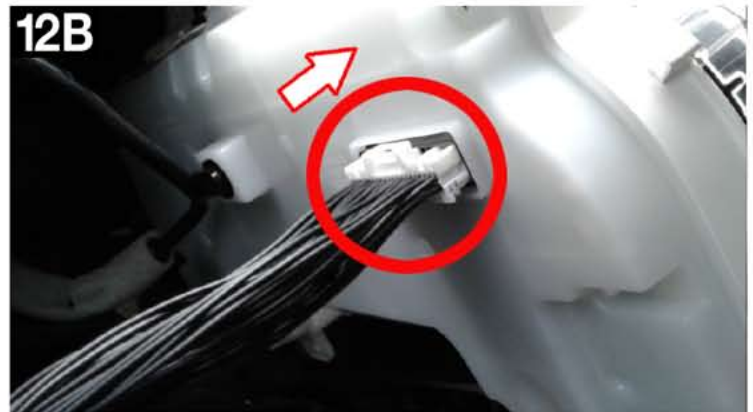
10. **POWER OFF** the vehicle for ten (10) minutes with the ignition key out of proximity of the vehicle to ensure the HSCAN bus powers down completely.



11. Remove the four (4) 8mm retaining screws and pull out on the IPC. Press in on the IPC wiring harness release tab and pull straight back to remove the harness. There is also a plastic retaining clip that secures the harness to the back of the IPC that will need to be pulled to remove the IPC.



12. Connect the male end of the In-Line Speedometer Calibrator harness into the factory wiring harness and the female end of the In-Line Speedometer Calibrator harness into the instrument panel cluster.



13. **Re-install the instrument cluster and dash trim in reverse of removal process shown earlier in this installation.**
14. Start the vehicle and check for any warning signs or messages. Test drive the vehicle to ensure proper speedometer function. Your installation is now complete!



1 Year Factory Direct Limited Warranty*

Hypertech products are warranted against defects in materials or workmanship for one year from the date of purchase. Hypertech's liability under this warranty shall be limited to the prompt correction or replacement of any defective part of the product which Hypertech determines to be necessary. This limited one (1) year warranty is to the original purchaser providing all the information requested is furnished. You must retain a copy of your original sales invoice or receipt. Without proper documentation, a service fee will be applied. **Third party resellers and resold units are NOT covered under this warranty.**



30-Day Risk-Free, Money Back Guarantee*

The 30-day money back guarantee applies to all Max Energy Spectrum Power Programmers, React Throttle Optimizers, Max Energy 2.0 Power Programmers, Max Energy Power Programmers, Interceptors, Speedometer Calibrators, In-Line Speedometer Calibrator Modules, and Power Chips for GM. The product MUST be returned to the place of purchase within thirty (30) days. All items must be received in a new, unused and ready-to-sell condition (including all original packaging, parts, and paperwork) to receive a refund, excluding any shipping and handling fees. **Units purchased used or reconditioned from a non-authorized Hypertech dealer, or units sold by 3rd-party vendors (i.e. ebay) are NOT covered under this guarantee.**

* Effective date: 1.20

End of Instructions