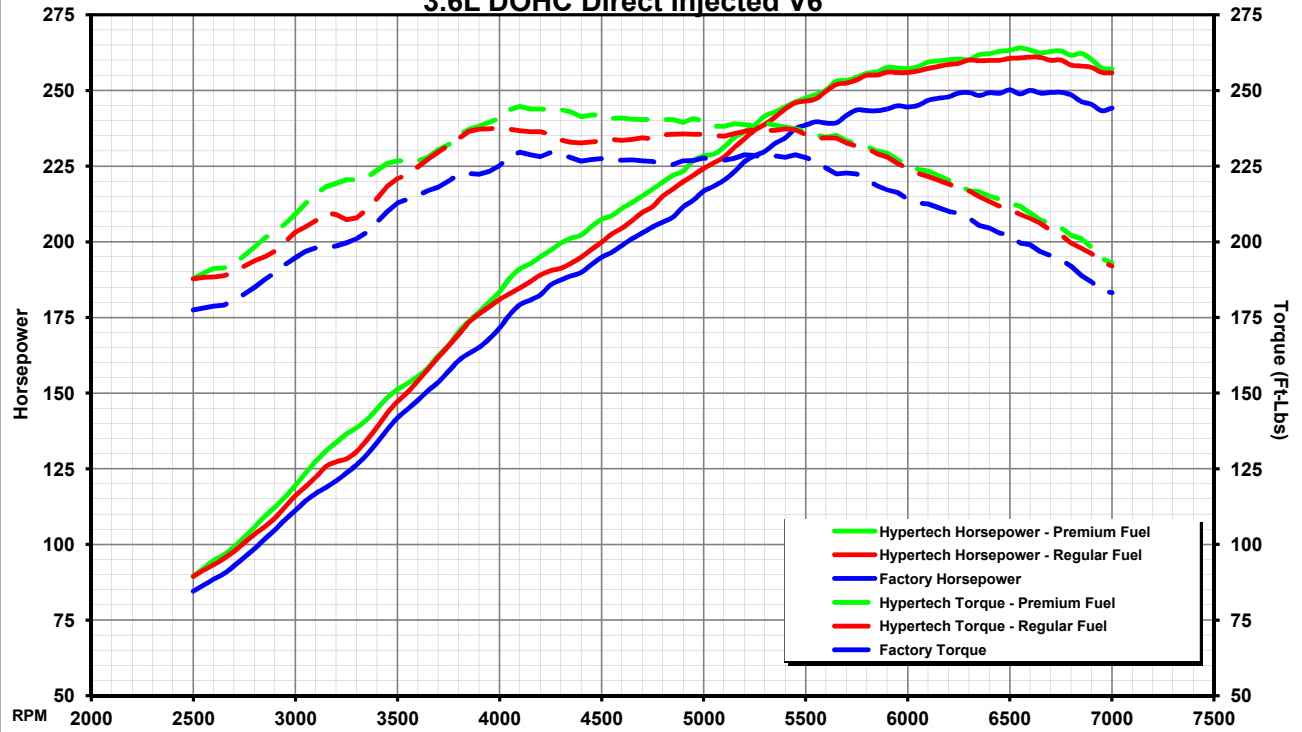


HYPERTECH DYNAMOMETER TEST RESULTS

2015-2016 Chevrolet Colorado, 2015-2016 GMC Canyon
3.6L DOHC Direct Injected V6



Tuning	Horsepower		Torque	
	Maximum	Gain	Maximum	Gain
Hypertech Tuning Premium Fuel	264 HP @ 6550 RPM	+16 HP @ 6850 RPM	245 Ft-Lbs @ 4100 RPM	+21 Ft-Lbs @ 3250 RPM
Hypertech Tuning Regular Fuel	261 HP @ 6600 RPM	+13 HP @ 5650 RPM	238 Ft-Lbs @ 4000 RPM	+15 Ft-Lbs @ 3900 RPM
Factory Stock Tuning	250 HP @ 6500 RPM	—	230 Ft-Lbs @ 4100 RPM	—

RPM	Horsepower				
	Factory HP	Hypertech Regular Fuel HP	(Gain)	Hypertech Premium Fuel HP	(Gain)
2500	85	89	(+4)	89	(+4)
3000	111	116	(+5)	119	(+8)
3200	121	127	(+6)	134	(+13)
3250	124	128	(+4)	136	(+12)
3500	142	147	(+5)	151	(+9)
3900	165	176	(+11)	177	(+12)
4000	171	181	(+10)	183	(+12)
4100	179	185	(+6)	191	(+12)
4500	195	200	(+5)	207	(+12)
5000	217	224	(+7)	228	(+11)
5500	239	247	(+8)	248	(+9)
5650	239	252	(+13)	253	(+14)
6000	245	256	(+11)	257	(+12)
6450	249	260	(+11)	263	(+14)
6500	250	261	(+11)	263	(+13)
6550	249	261	(+12)	264	(+15)
6600	250	261	(+11)	263	(+13)
6650	249	261	(+12)	262	(+13)
6700	249	260	(+11)	263	(+14)
6850	246	258	(+12)	262	(+16)
7000	244	256	(+12)	257	(+13)

RPM	Torque				
	Factory Torque	Hypertech Regular Fuel Torque	(Gain)	Hypertech Premium Fuel Torque	(Gain)
2500	178	188	(+10)	188	(+10)
3000	195	203	(+8)	209	(+14)
3200	199	209	(+10)	219	(+20)
3250	200	207	(+7)	221	(+21)
3500	213	221	(+8)	227	(+14)
3900	222	237	(+15)	238	(+16)
4000	225	238	(+13)	241	(+16)
4100	230	237	(+7)	245	(+15)
4500	227	233	(+6)	242	(+15)
5000	228	236	(+8)	240	(+12)
5500	228	235	(+7)	236	(+8)
5650	222	234	(+12)	235	(+13)
6000	214	224	(+10)	225	(+11)
6450	203	212	(+9)	214	(+11)
6500	202	211	(+9)	213	(+11)
6550	200	209	(+9)	212	(+12)
6600	199	208	(+9)	210	(+11)
6650	197	206	(+9)	207	(+10)
6700	195	204	(+9)	206	(+11)
6850	189	198	(+9)	201	(+12)
7000	183	192	(+9)	193	(+10)

Tuning Features

- Contains Two Performance Tunes for either Regular or Premium Fuel
- Speedometer and Odometer Correction for Tire Sizes for 24"-54"
- Speedometer and Odometer Correction for Rear Axle Gear Ratios 2.56:1-5.13:1
- Adjustable Tire Pressure Monitoring Warning Pressures (5-95psi)
- Reads, Displays, and Clears Diagnostic Trouble Codes (DTC's)
- Adjustable Engine RPM Rev Limiter
- Adjustable Transmission Shift Points and Firmness
- Adjustable Top Speed Limiter to Match Speed Rated Tires

3215 Appling Rd., Bartlett, TN 38133 www.Hypertech.com
(901) 385-1888 © Hypertech, Inc. 2014

Vehicle Tested: 2016 Colorado LT 4x4
Engine: 3.6L DOHC DI V6
Transmission: 6-Spd Automatic
Gear Ratio: 3.42:1
Tire Size: 255/65R17
Test Date: 9/21/2015

POWER PROGRAMMER 2.0