

A photograph of four male rowers in a boat, wearing black athletic gear and sunglasses, rowing on a body of water. The rowers are in a synchronized stroke, with their arms extended forward. The water is dark blue with some whitecaps. In the background, there are red buoys. The overall scene is dynamic and focused on the sport of rowing.

2XU
C U S T O M

CUSTOM ROWING RANGE

2XU

C U S T O M

ROWING FABRIC TECHNICAL INFORMATION

2XU's range of rowing apparel offers something for all performance levels. We combine world leading performance fabrics with intelligent engineering and construction to ensure every rower receives a premium garment. Our designs consider the rowers performance needs by ensuring our fabrics and fit enhance performance.

ICEX

Cooling technology that actively lowers skin temperature when contact is made with the skin. The fabric weave also blocks IR and UV rays for added sun protection.

HP **STRETCH**

High filament nylon yarn provides durability and long life, while the elastane yarns add comfort and 360-degrees stretch for a full range of movement.

HP **MESH**

Provides superior air flow and moisture control to keep the wearer cool and dry without compromising on comfort and flexibility.

HPL

Provides excellent moisture control and stretch for flexibility and comfort.

RIVIERA ELITE

This Italian-made fabric combination is durable, quick drying and comfortable. Pilling and abrasion resistant, the micro polyamide (nylon) yarns are durable, while the Invista LYCRA® XTRA LIFE™ adds comfort.

MALAGA ACTIVE

This Italian-made fabric combination is durable, quick drying and comfortable. Pilling and abrasion resistant, the micro polyamide (nylon) yarns are durable, while the Invista LYCRA® provides comfort.

HP **LINING**

Discreet high-performance polyester lining that provides moisture control and comfort.

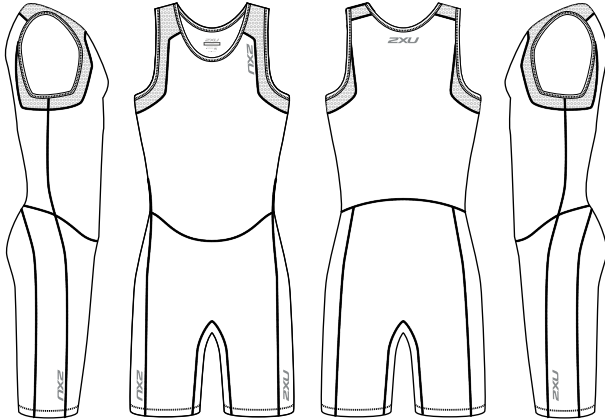


MEN'S

CUSTOM ROWING COLLECTION

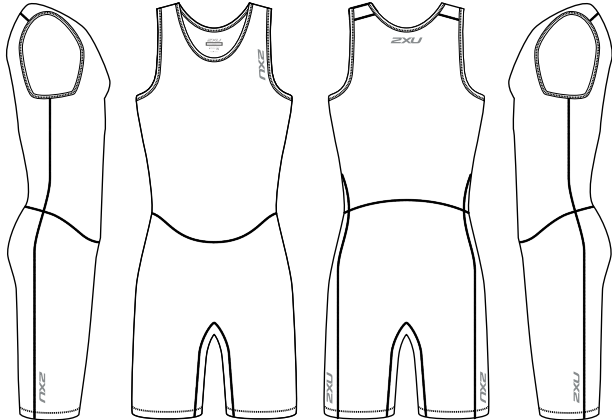


MEN'S CUSTOM ROWING COLLECTION



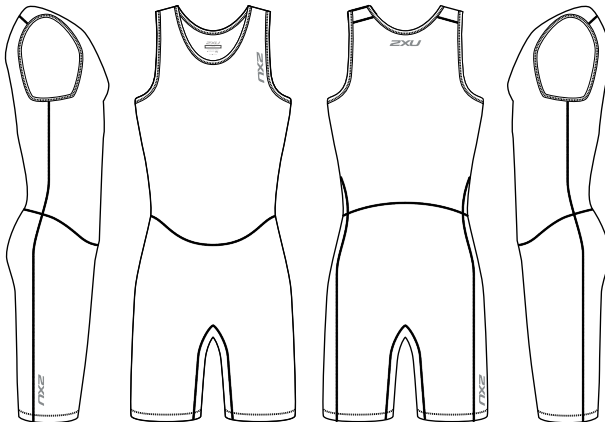
MX4948D

Men's Elite Rowing Suit



MX4950D

Men's Perform Rowing Suit



MX5189D

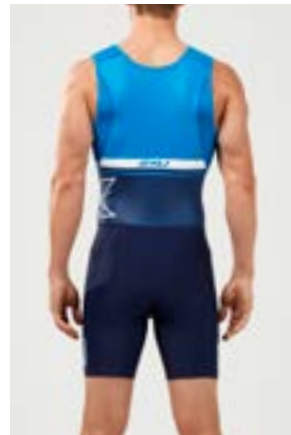
Men's BSR Rowing Suit

MEN'S ELITE ROWING SUIT

MX4948D

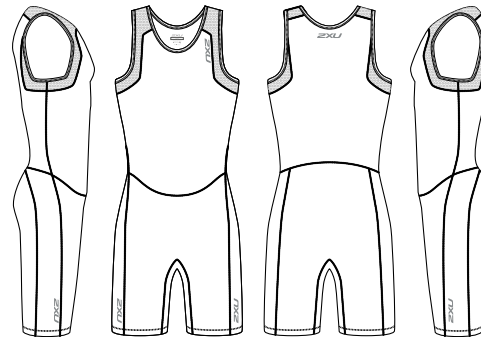
SUBLIMATION

SIZE RANGE: XXS - 3XL



GARMENT FEATURES

01. Custom made design.
02. Elite fit.
03. 9" leg opening.
04. Mesh panelling around the armhole.
05. Low profile armhole.
06. Row-specific anatomically shaped panels.
07. Flatlock seam construction to eliminate chafing.
08. Designed to meet in boat needs.



RIVIERA ELITE

This Italian-made fabric combination is durable, quick drying and comfortable. Pilling and abrasion resistant, the micro polyamide (nylon) yarns are durable, while the Invista LYCRA® XTRA LIFE™ adds comfort.

ICEX

Cooling technology that actively lowers skin temperature when contact is made with the skin. The fabric weave also blocks IR and UV rays for added sun protection.

HP MESH

Provides superior air flow and moisture control to keep the wearer cool and dry without compromising on comfort and flexibility.

HP LINING

Discreet high-performance polyester lining that provides moisture control and comfort.

Heath is 186cm, 88kg and wears a Medium.

MEN'S PERFORM ROWING SUIT

MX4950D

SUBLIMATION

SIZE RANGE: XXS - 3XL



GARMENT FEATURES

01. Custom made design.
02. Performance fit.
03. 9" leg opening.
04. Low profile armhole.
05. Row-specific anatomically shaped panels.
06. Flatlock seam construction to eliminate chafing.
07. Designed to meet in boat needs.

MALAGA ACTIVE

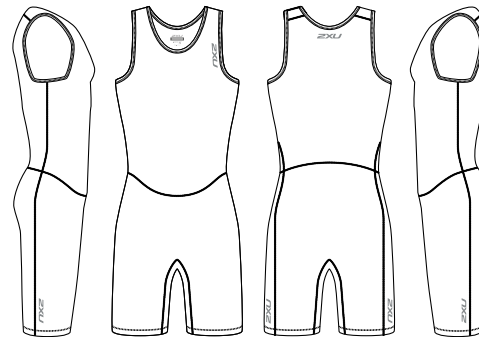
This Italian-made fabric combination is durable, quick drying and comfortable. Pilling and abrasion resistant, the micro polyamide (nylon) yarns are durable, while the Invista LYCRA® provides comfort.

HPL

Provides excellent moisture control and stretch for flexibility and comfort.

HP LINING

Discreet high-performance polyester lining that provides moisture control and comfort.



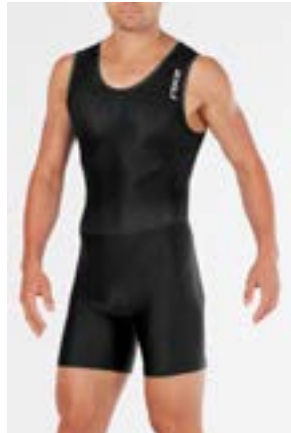
Heath is 186cm, 88kg and wears a Medium.

MEN'S BSR ROWING SUIT

MX5189D

COLOUR WAYS: BLACK, NAVY

SIZE RANGE: XS - 4XL



GARMENT FEATURES

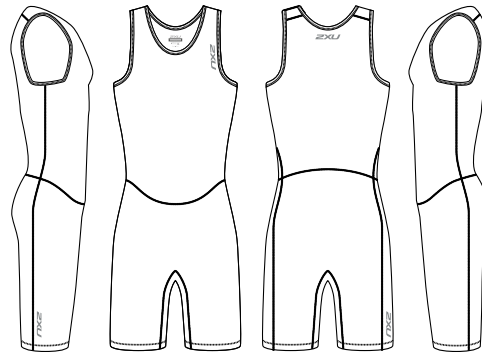
01. Semi-custom made design for quick strike availability.
02. Performance fit.
03. 9" leg opening.
04. Low profile armhole.
05. Row-specific anatomically shaped panels.
06. Flatlock seam construction to eliminate chafing.
07. Designed to meet in boat needs.

HPL

Provides excellent moisture control and stretch for flexibility and comfort.

HP Lining

Discreet high-performance polyester lining that provides moisture control and comfort.



Levi is 188cm, 82kg and wears a Medium.

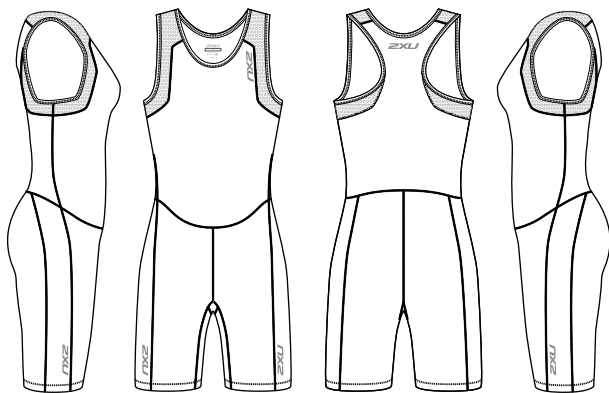


WOMEN'S

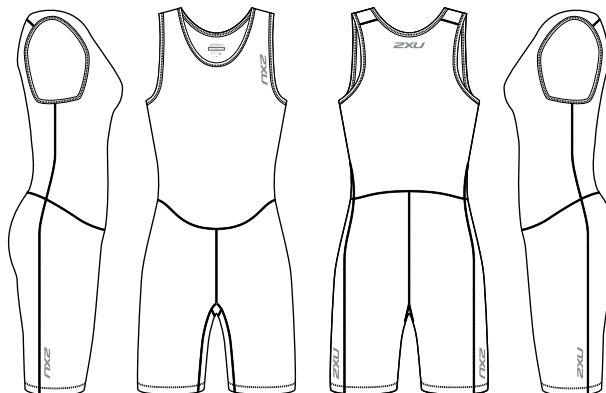
CUSTOM ROWING COLLECTION



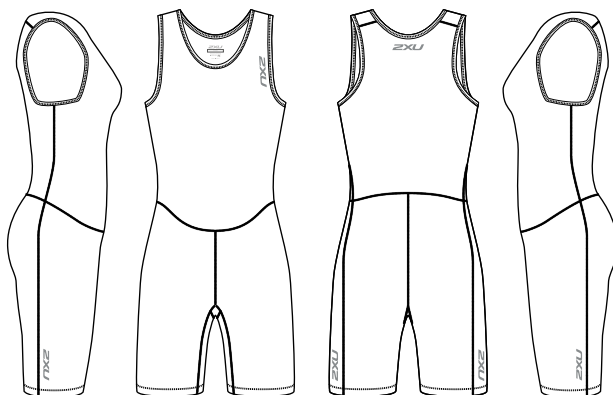
WOMEN'S CUSTOM ROWING COLLECTION



WX4949D
Women's Elite Rowing Suit



WX4951D
Women's Perform Rowing Suit



WX5190D
Women's BSR Rowing Suit

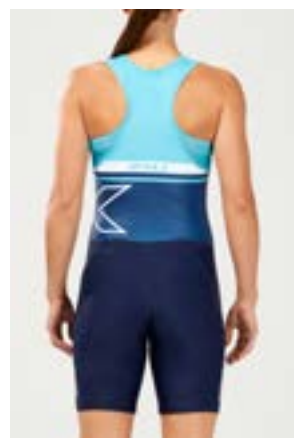
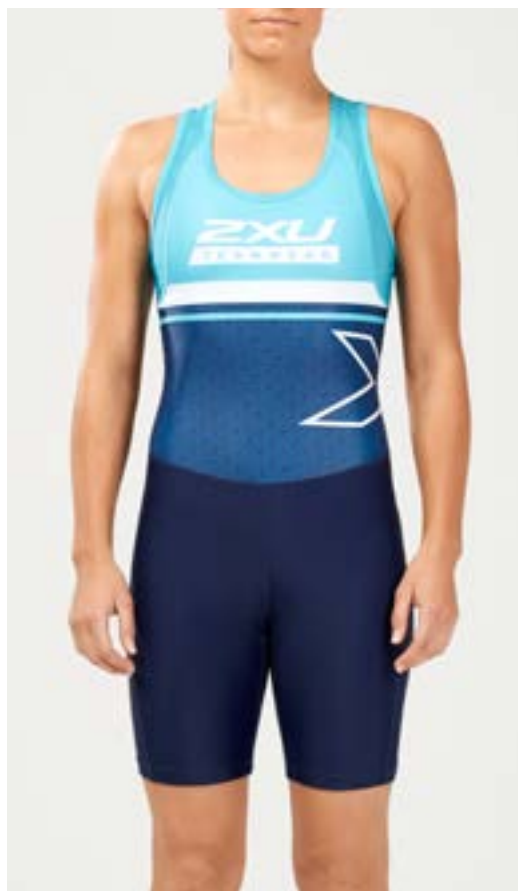
WOMEN'S ELITE ROWING SUIT

WX4949D

SUBLIMATION

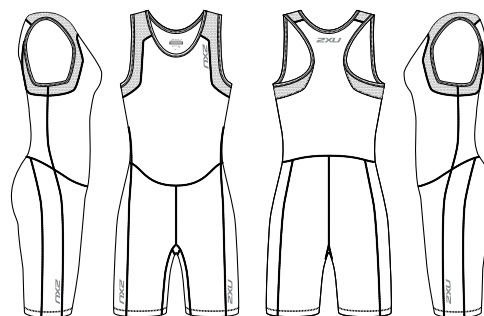
SIZE RANGE: XXS - 3XL

Hannah is 170cm, 60kg and wears a Samll



GARMENT FEATURES

01. Custom made design.
02. Elite fit.
03. 9" leg opening.
04. Mesh panelling around the armhole.
05. Low profile armhole.
06. Row-specific anatomically shaped panels.
07. Flatlock seam construction to eliminate chafing.
08. Designed to meet in boat needs.



RIVIERA ELITE

This Italian-made fabric combination is durable, quick drying and comfortable. Pilling and abrasion resistant, the micro polyamide (nylon) yarns are durable, while the Invista LYCRA® XTRA LIFE™ adds comfort.

ICEX

Cooling technology that actively lowers skin temperature when contact is made with the skin. The fabric weave also blocks IR and UV rays for added sun protection.

HP MESH

Provides superior air flow and moisture control to keep the wearer cool and dry without compromising on comfort and flexibility.

HP LINING

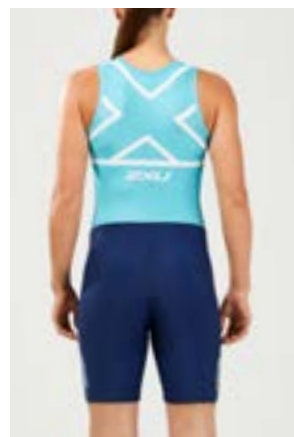
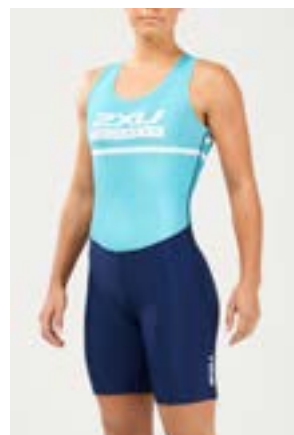
Discreet high-performance polyester lining that provides moisture control and comfort.

WOMEN'S PERFORM ROWING SUIT

WX4951D

SUBLIMATION

SIZE RANGE: XXS - 3XL



GARMENT FEATURES

01. Custom made design.
02. Performance fit.
03. 9" leg opening.
04. Low profile armhole.
05. Row-specific anatomically shaped panels.
06. Flatlock seam construction to eliminate chafing.
07. Designed to meet in boat needs.

MALAGA ACTIVE

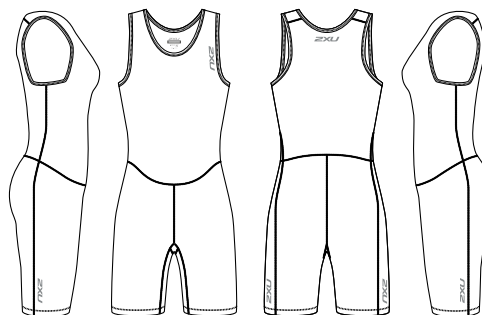
This Italian-made fabric combination is durable, quick drying and comfortable. Pilling and abrasion resistant, the micro polyamide (nylon) yarns are durable, while the Invista LYCRA® provides comfort.

HPL

Provides excellent moisture control and stretch for flexibility and comfort.

HP LINING

Discreet high-performance polyester lining that provides moisture control and comfort.



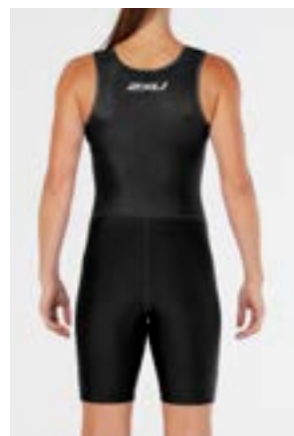
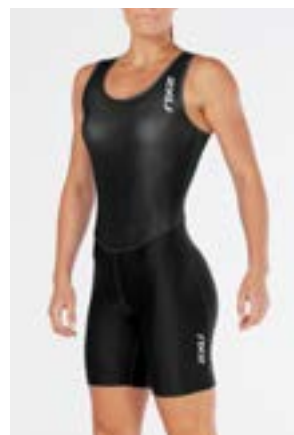
Hannah is 170cm, 60kg and wears a Samll

WOMEN'S BSR ROWING SUIT

WX5190D

COLOUR WAYS: BLACK, NAVY

SIZE RANGE: XXS - 3XL



GARMENT FEATURES

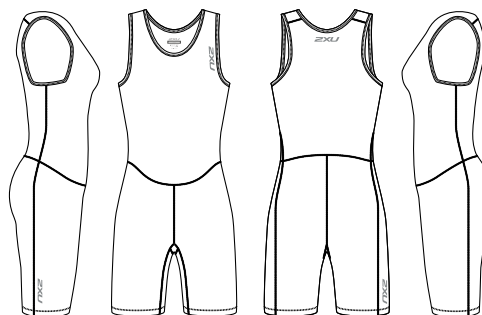
01. Semi-custom made design for quick strike availability.
02. Performance fit.
03. 9" leg opening.
04. Low profile armhole.
05. Row-specific anatomically shaped panels.
06. Flatlock seam construction to eliminate chafing.
07. Designed to meet in boat needs.

HPL

Provides excellent moisture control and stretch for flexibility and comfort.

HP Lining

Discreet high-performance polyester lining that provides moisture control and comfort.



Hannah is 170cm, 60kg and wears a Samll

ROWING

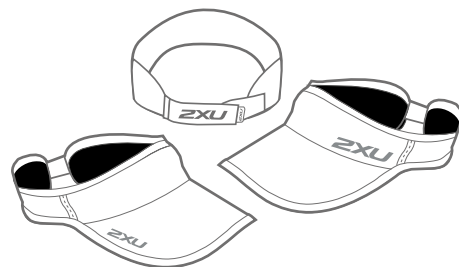
ACCESSORIES



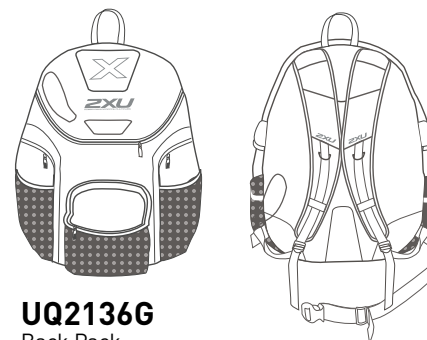
ROWING ACCESSORIES



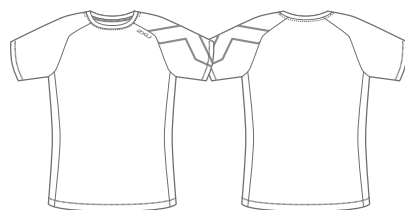
UR1188F
Unisex Cap



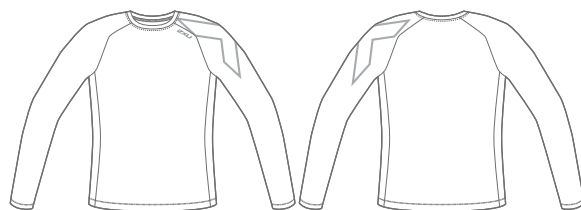
UA1150F
Unisex Visor




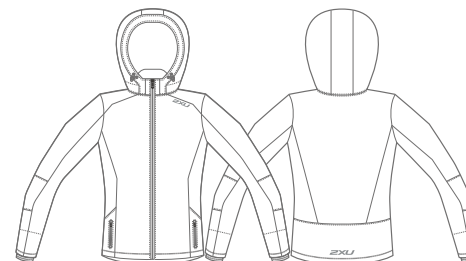
UQ2136G
Back Pack



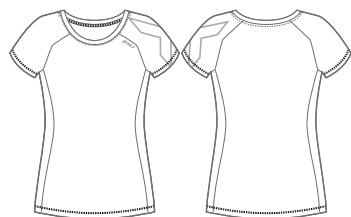
MR4818A
Men's BSR Active S/S Tee 



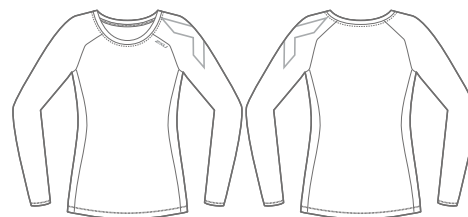
MR5158A
Men's BSR Active L/S Shirt 



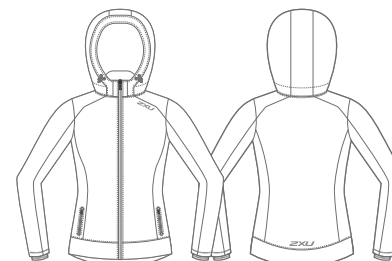
MR4821A
Men's BSR Membrane Jacket



WR4816A
Women's BSR Active S/S Tee 



WR5159A
Women's BSR Active L/S Shirt 



WR4820A
Women's BSR Membrane Jacket

UNISEX CAP

UR1188F

COLOUR WAYS: BLACK, WHITE

SIZE RANGE: OSFA



GARMENT FEATURES

01. Six-panel, curved peak design.
02. Mesh panelling for ventilation.
03. Adjustable velcro strap closure to ensure a secure fit.
04. Soft internal elastic sweatband for lasting comfort.
05. Traditional 2XU branding.

FABRIC BENEFITS

01. Durable light-weight woven structure for premium moisture management and breathability.



UNISEX VISOR

UA1150F

COLOUR WAYS: BLACK, WHITE

SIZE RANGE: OSFA

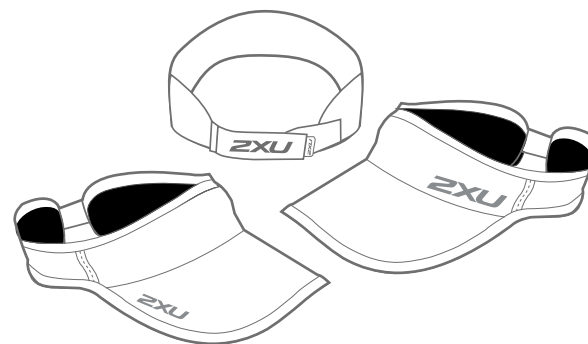


GARMENT FEATURES

01. Anatomic panelling, curved peak design for a performance fit.
02. Adjustable velcro strap closure to ensure a secure fit.
03. Soft internal elastic sweatband for lasting comfort.
04. Traditional 2XU branding.

FABRIC BENEFITS

01. Durable light-weight woven structure for premium moisture management and breathability.



UNISEX BACKPACK

UQ2136G

COLOUR WAYS: BLACK

SIZE RANGE: OSFA

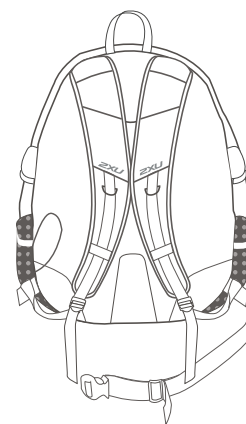
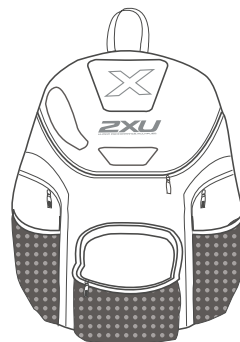


GARMENT FEATURES

01. Ergonomic design with fully adjustable and padded straps for a customised fit.
02. Padded laptop pouch, easy access key storage and side storage for water bottles.
03. 20L capacity.

FABRIC BENEFITS

01. Highly durable shell outer offers water and abrasion resistance.
02. Internal padding zones for essential comfort.



MEN'S BSR ACTIVE S/S TEE

MR4818A

COLOUR WAYS: BLACK, NAVY, WHITE

SIZE RANGE: XS - 3XL

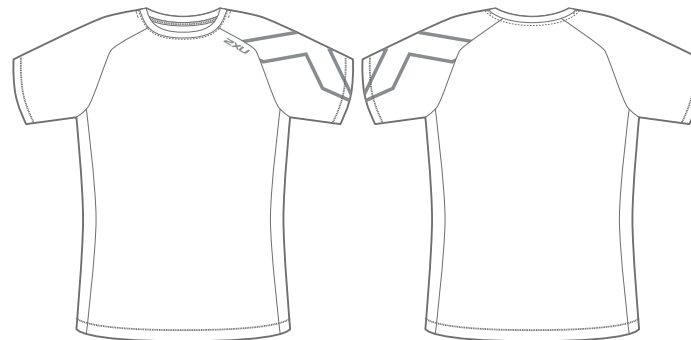


GARMENT FEATURES

01. Semi-fitted, active style tee.
02. Crew neckline with neck band and interior taping for comfort and durability.
03. Short sleeves with raglan design.
04. Chafe-free flatlock seam construction.
05. X-device branding on the left sleeve.
06. Semi custom design for logo placement ease.

FABRIC BENEFITS

01. Utilising 2XU's breakthrough moisture management technology to keep you drier through high-filament yarns and cooler through our advanced knit structure.
02. POLYGIENE® odour technology ensures you stay fresh and odour-free. Wear more, wash less and reduce your environmental footprint.



Levi is 188cm, 82kg and wears a Medium.

MEN'S BSR ACTIVE L/S SHIRT

MR5158A

COLOUR WAYS: BLACK, NAVY, WHITE

SIZE RANGE: XS - 3XL

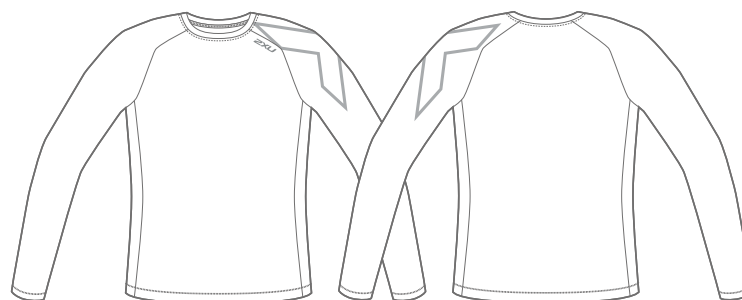


GARMENT FEATURES

01. Semi-fitted, active style tee.
02. Crew neckline with neck band and interior taping for comfort and durability.
03. Long sleeves with raglan design.
04. Chafe-free flatlock seam construction.
05. X-device branding on the left sleeve.
06. Semi custom design for logo placement ease.

FABRIC BENEFITS

01. Utilising 2XU's breakthrough moisture management technology to keep you drier through high-filament yarns and cooler through our advanced knit structure.
02. POLYGIENE® odour technology ensures you stay fresh and odour-free. Wear more, wash less and reduce your environmental footprint.



MEN'S BSR MEMBRANE JACKET

MR4821A

COLOUR WAYS: BLACK, NAVY

SIZE RANGE: XS - 2XL

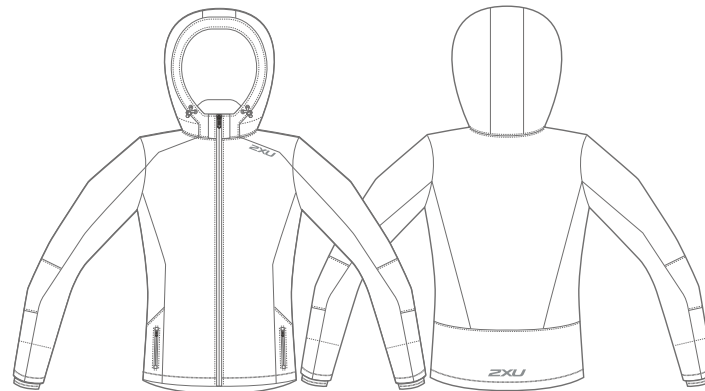


GARMENT FEATURES

01. Semi-fitted style with articulated back hem to provide extra coverage.
02. Hood boasts an integrated bungee cord for personalised coverage.
03. Detachable hood for a customised look.
04. High collar with an internal zip guard.
05. Full front waterproof zipper.
06. Side front waterproof zip pockets for convenient storage.
07. Semi custom design for logo placement ease.

FABRIC BENEFITS

01. Utilising fully waterproof fabric, coupled with advanced moisture control to create the perfect micro climate, you stay warm and dry.
02. Soft internal cuff and collar for comfort and added insulation.
03. Fleece lined front pockets for softness and warmth next to skin.



Levi is 188cm, 82kg and wears a Medium.

WOMEN'S BSR ACTIVE S/S TEE

WR4816A

COLOUR WAYS: BLACK, NAVY, WHITE

SIZE RANGE: 2XS - 3XL

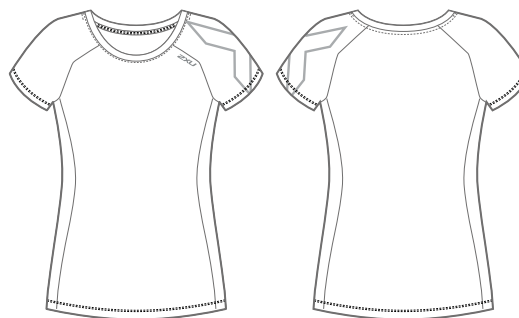


GARMENT FEATURES

01. Semi-fitted, active style tee.
02. Crew neckline with neck band and interior taping for comfort and durability.
03. Short sleeves with raglan design.
04. Chafe-free flatlock seam construction.
05. X-device branding on the left sleeve.
06. Semi custom design for logo placement ease.

FABRIC BENEFITS

01. Utilising 2XU's breakthrough moisture management technology to keep you drier through high-filament yarns and cooler through our advanced knit structure.
02. POLYGIENE® odour technology ensures you stay fresh and odour-free. Wear more, wash less and reduce your environmental footprint.



WOMEN'S BSR ACTIVE L/S SHIRT

WR5159A

COLOUR WAYS: BLACK, NAVY, WHITE

SIZE RANGE: 2XS - 3XL

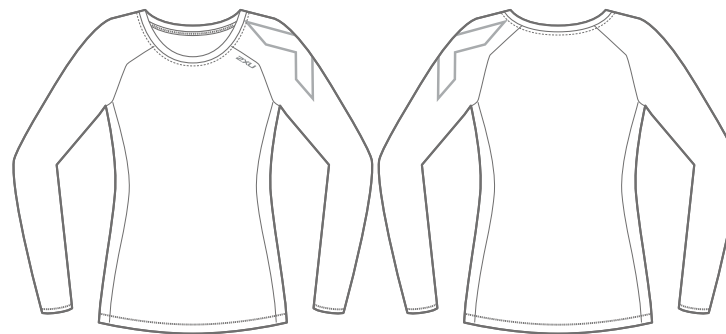


GARMENT FEATURES

01. Semi-fitted, active style tee.
02. Crew neckline with neck band and interior taping for comfort and durability.
03. Long sleeves with raglan design.
04. Chafe-free flatlock seam construction.
05. X-device branding on the left sleeve.
06. Semi custom design for logo placement ease.

FABRIC BENEFITS

01. Utilising 2XU's breakthrough moisture management technology to keep you drier through high-filament yarns and cooler through our advanced knit structure.
02. POLYGIENE® odour technology ensures you stay fresh and odour-free. Wear more, wash less and reduce your environmental footprint.



Hannah is 170cm, 60kg and wears a Small

WOMEN'S MEMBRANE JACKET

WR4820A

COLOUR WAYS: BLACK, NAVY

SIZE RANGE: 2XS - 2XL

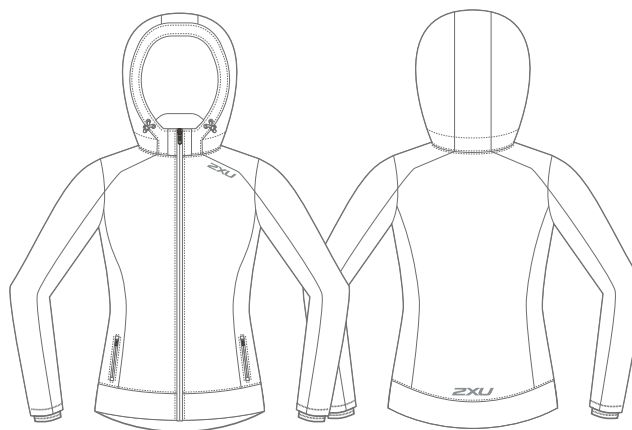


GARMENT FEATURES

01. Semi-fitted style with articulated back hem to provide extra coverage.
02. Hood boasts an integrated bungee cord for personalised coverage.
03. Detachable hood for a customised look.
04. High collar with an internal zip guard.
05. Full front waterproof zipper.
06. Side front waterproof zip pockets for convenient storage.
07. Semi custom design for logo placement ease.

FABRIC BENEFITS

01. Utilising fully waterproof fabric, coupled with advanced moisture control to create the perfect micro climate, you stay warm and dry.
02. Soft internal cuff and collar for comfort and added insulation.
03. Fleece lined front pockets for softness and warmth next to skin.



Hannah is 170cm, 60kg and wears a Samll



SIZING CHARTS

CUSTOM ROWING COLLECTION

ROWING RANGE SIZING INFORMATION - MEN'S

MEN'S SIZING

MEASUREMENT (circumference)		XS	S	M	L	XL	XXL	3XL	4XL
Chest	cm	87-91	92-96	97-101	102-106	107-111	112-116	117-121	122-126
	inches	34 ¹ / ₄ -35 ⁷ / ₈	36 ¹ / ₄ -35 ³ / ₄	38 ¹ / ₈ -39 ³ / ₄	40 ¹ / ₈ -41 ³ / ₄	42 ¹ / ₈ -43 ³ / ₄	44 ¹ / ₈ -45 ⁵ / ₈	46 ¹ / ₈ -47 ⁵ / ₈	48-49 ⁵ / ₈
Waist	cm	70-74	75-79	80-84	85-89	90-94	95-99	100-104	105-109
	inches	27 ¹ / ₂ -29 ¹ / ₈	29 ¹ / ₂ -31 ¹ / ₈	31 ¹ / ₂ -33	33 ¹ / ₂ -35	35 ¹ / ₈ -37	37 ³ / ₈ -39	39 ³ / ₈ -41	41 ³ / ₈ -42 ⁷ / ₈



Levi is 188cm, 82kg and wears a Medium.

ROWING RANGE SIZING INFORMATION - WOMEN'S

WOMEN'S SIZING

MEASUREMENT (circumference)		XXS	XS	S	M	L	XL	XXL	3XL
Bust	cm	78-82	83-87	88-92	93 - 97	98 -102	103-107	108-112	113-117
	inches	30 ³ / ₄ -32 ¹ / ₄	32 ⁵ / ₈ -34 ¹ / ₄	34 ⁵ / ₄ -36 ¹ / ₄	36 ⁵ / ₈ -38 ¹ / ₄	38 ⁵ / ₈ -40 ¹ / ₄	40 ¹ / ₂ -42 ¹ / ₈	42 ¹ / ₂ -44 ¹ / ₈	44 ¹ / ₂ -46
Waist	cm	58-62	63-67	68-72	73-77	78-82	83-87	88-92	93-97
	inches	22 ³ / ₈ -24 ³ / ₈	24 ³ / ₄ -26 ³ / ₈	26 ³ / ₄ -28 ³ / ₈	28 ³ / ₄ -30 ³ / ₈	30 ³ / ₄ -32 ¹ / ₄	32 ³ / ₄ -34 ¹ / ₄	34 ⁵ / ₈ -36 ¹ / ₄	36 ⁵ / ₈ -38 ¹ / ₄
Hip	cm	86-90	91-95	96-100	101-105	106-110	111-115	116-120	121-125
	inches	33 ⁷ / ₈ -35 ¹ / ₂	35 ⁷ / ₈ -37 ³ / ₈	37 ³ / ₄ -39 ³ / ₈	39 ³ / ₄ -41 ³ / ₈	41 ³ / ₄ -43 ³ / ₈	43 ³ / ₄ -54 ¹ / ₄	45 ⁵ / ₈ -47 ¹ / ₄	47 ⁵ / ₈ -49 ¹ / ₄



Hannah is 170cm, 60kg and wears a Samll

The logo for 2XU CUSTOM. The word "2XU" is written in a bold, italicized, white sans-serif font. Below it, the word "CUSTOM" is written in a smaller, white, spaced-out sans-serif font, with each letter separated by a small gap. The text is positioned in the bottom-left corner of the image.

2XU
C U S T O M