

CUSTOM CYCLE COLLECTION



2XU
C U S T O M



THE NEW 2XU CUSTOM CYCLE
COLLECTION HAS BEEN EXCLUSIVELY
ENGINEERED IN PARTNERSHIP WITH
JELLY BELLY PRO CYCLING TEAM.



CYCLING TEAM

“ The 2XU race skinsuit provides a great fit in a very aerodynamic package that still has pockets for those really long races. ”

“ As athletes we're always too cold, or too hot and are always modifying a piece of clothing with a pair of scissors. At Jelly Belly Pro Cycling we were able to work directly with 2XU to create a range of products that more than encompasses the gamut of weather conditions we experience when racing and training and in a fit that is comfortable, aerodynamic and looks amazing. I've no longer a need for my scissors. ”

“ I really enjoy wearing the lightweight 2XU summer jersey on those hot days in the big mountains. Staying cool and comfortable makes all the difference in the long stage races that the Jelly Belly Pro Cycling Team partakes in. ”

- JELLY BELLY PRO CYCLING TEAM

CUSTOM CYCLING FABRIC TECHNICAL INFORMATION

The Custom Cycling collection has been engineered to deliver enhanced comfort and aerodynamics. The collection delivers world leading cycling garment technology for first class performance.

KINETIC POWER

Engineered specifically for cycle. This durable, high denier nylon elastane knit provides increased power through higher muscle holding ability.

KINETIC SPEED

Swiss-made Kinetic Speed, with golf ball air trapping performance for increased aerodynamics.

VAPOR

Lightweight stretch high gauge woven fabric that blocks out the wind while staying light and packable.

HI~FILXTREME

High filament polyester yarns provides extreme moisture management and breathability, while the brushed inner delivers warmth and comfort.

FLXPRO

Utilising a polyester elastane blend to provide essential stretch and recovery.

SMD

High filament yarns in a mesh knit structure to ensure moisture control.

HI~FILVENT+

A high filament polyester yarn created into a cycle-specific vent knit structure to optimise ventilation and improve aerodynamics. Polygiene® antibacterial for lifetime odour elimination.

ITALIASUB

Italian-made and engineered specifically for cycle. This sublimation fabric offers customisation, extreme moisture management and high filament yarns to ensure extra comfort.

HI~FIL+

A performance fabric using high filament technology for maximum moisture management. Cross channelled yarns wick vapour from the inner to outer layers to keep the wearer dry and comfortable. Polygiene® antibacterial for lifetime odour elimination.

2X20K

Lightweight and flexible PU membrane that provides 20k waterproofing and 20k moisture vapour transfer. This fabric features a high filament jersey backing for comfort.

CUSTOM CYCLING FABRIC TECHNICAL INFORMATION

ICE X

Cooling technology that actively lowers skin temperature when contact is made with the skin. The fabric weave also blocks IR and UV rays for added sun protection.

ICE X MESH

ICE X MESH technology draws heat from the body and lowers skin temperature by up to 3°C / 5.4°F. The ultimate solution for endurance demands, ICE X MESH will keep athletes cool through the harshest conditions.

VELO HEAT

Italian-made high filament brushed polyester to encourage the perfect microclimate. The high gauge knit provides dryness and warmth, while the brushed backing traps heat. The high filament x section yarns aid dryness.

VELO MESH

High filament yarns in a mesh knit structure which aids cooling and moisture control.

VELOPRO HEAT

High filament yarn coupled with high density Lycra yarn gives high power, durability and breathability. The brushed backing traps heat for warmth and increases moisture management.

HI FIL VELO

An Italian-made, cycle-specific HI FIL VELO performance fabric engineered for maximum moisture management. Cross channelled yarns wick vapour from the inner to the outer layers to keep the wearer dry and comfortable, while the mesh structure promotes breathability.

VELO POWER

Velo Power utilises Italian-made high-filament nylon yarns, coupled with high denier elastane fibres for exceptional durability and muscle holding ability.

SENSOR MESH

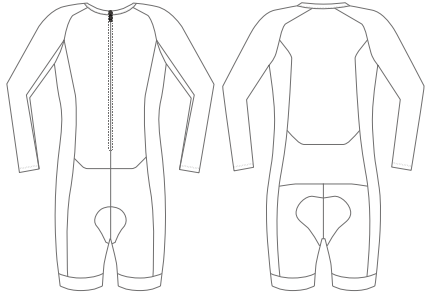
Utilising a polyester-elastane breathable matrix for optimal air flow for the ultimate in moisture management.



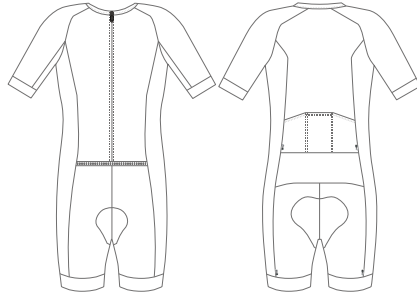
MEN'S

CUSTOM CYCLE COLLECTION

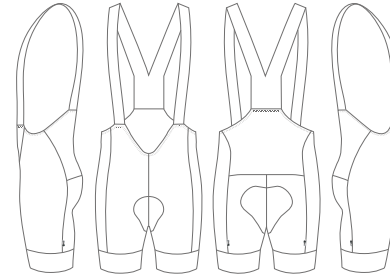
MEN'S CUSTOM CYCLE COLLECTION



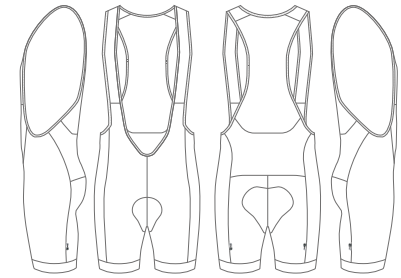
MX4974D
Men's Longsleeve Cycle Skinsuit



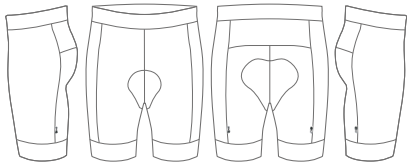
MX4972D
Men's Cycle Skinsuit



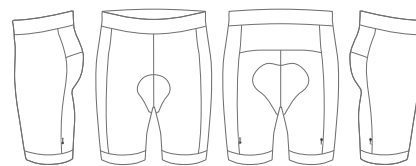
MX4954B
Men's Elite Cycle Bib Shorts



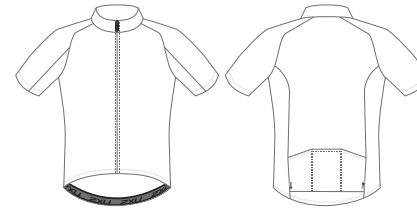
MX4960B
Men's Perform Cycle Bib Shorts



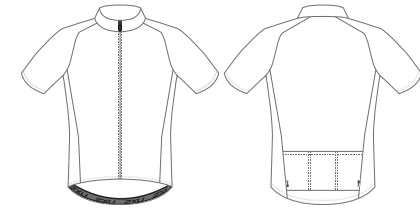
MX4956B
Men's Elite Cycle Shorts



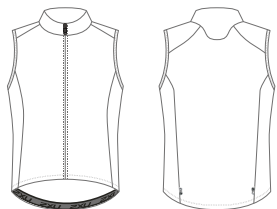
MX4962B
Men's Perform Cycle Shorts



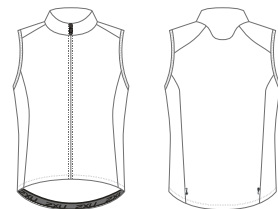
MX4952A
Men's Elite Cycle Jersey



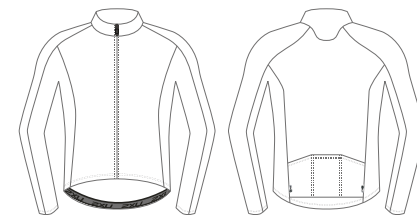
MX4958A
Men's Perform Cycle Jersey



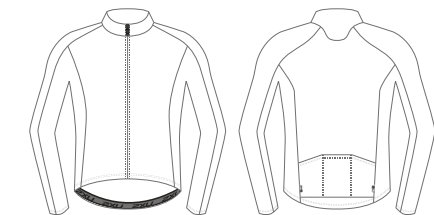
MX4966A
Men's Spring Cycle Gilet



MX4968A
Men's Wind Defence Cycle Gilet



MX4964A
Men's Thermal Longsleeve Cycle Jersey



MX4970A
Men's Wind Defence Cycle Jacket

MEN'S LONGSLEEVE CYCLE SKINSUIT

MX4974D

SUBLIMATION/BULK DYE

SIZE RANGE: 2XS - 5XL

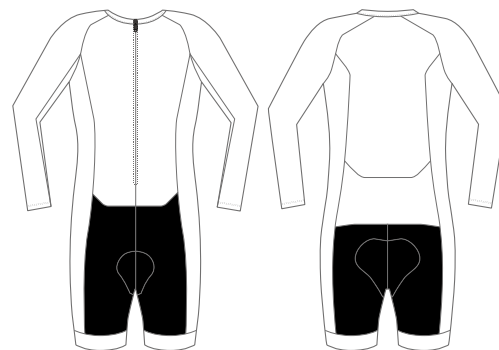


GARMENT FEATURES

01. ACF: Anatomical Cycle Fit
02. Alta Badia chamois
03. Reflective trims for visibility
04. Rear pockets for storage
05. 75mm wide Italian leg grippers for performance and comfort

BULK DYE COLOUR OPTIONS

- Black
- Navy 282C
- Bluette 2728C
- Red 186C
- Gunmetal Grey 18-0201 TPX
- White



*Areas highlighted in black denotes bulk dye fabric.

FABRIC BENEFITS

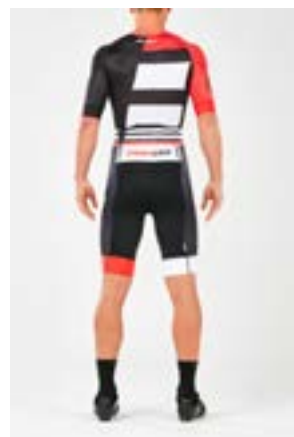
01. VELO POWER
Velo Power utilises Italian-made high-filament nylon yarns, coupled with high denier elastane fibres for exceptional durability and muscle holding ability.
02. KINETIC SPEED
Swiss-made Kinetic Speed, with golf ball air trapping performance for increased aerodynamics.
03. ICE X MESH
Draws heat from the body and lowers skin temperature by up to 3°C / 5.4°F. The ultimate solution for endurance demands, ICE X MESH will keep athletes cool through the harshest conditions.
04. ICE X
Offering superior cooling performance with support and moisture control, ICE X utilises a high filament polyester cooling yarn construction to lower body temperature when working out. This is supported by powerful elastane yarns that provides the right amount of stretch and recovery for cycling.
05. ALTA BADIA CHAMOIS
Italian-made maximum 120 density foam chamois with multi-zoned padding and pre-shaped technology to provide ultimate comfort. Engineered as a seamless one-piece design, perforated for excellent breathability and enhanced moisture management, with a low profile outer edge to prevent chafing. Antibacterial protection has been added for anti-odour control.

MEN'S CYCLE SKINSUIT

MX4972D

SUBLIMATION/BULK DYE

SIZE RANGE: 2XS - 5XL

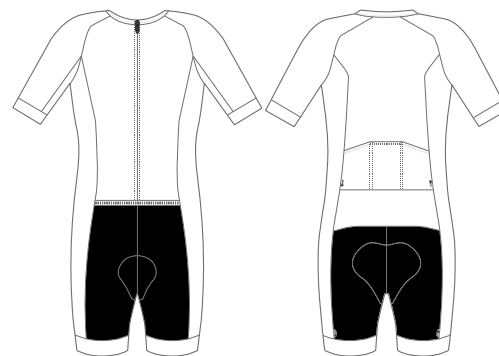


GARMENT FEATURES

01. ACF: Anatomical Cycle Fit
02. Alta Badia chamois
03. Reflective trims for visibility
04. Rear pockets for storage
05. 75mm wide Italian leg grippers for performance and comfort

BULK DYE COLOUR OPTIONS

- Black
- Navy 282C
- Bluette 2728C
- Red 186C
- Gunmetal Grey 18-0201 TPX
- White



*Areas highlighted in black denotes bulk dye fabric.

FABRIC BENEFITS

01. VELO POWER
Velo Power utilises Italian-made high-filament nylon yarns, coupled with high denier elastane fibres for exceptional durability and muscle holding ability.
02. KINETIC SPEED
Swiss-made Kinetic Speed, with golf ball air trapping performance for increased aerodynamics.
03. ICE X MESH
Draws heat from the body and lowers skin temperature by up to 3°C / 5.4°F. The ultimate solution for endurance demands, ICE X MESH will keep athletes cool through the harshest conditions.
04. ICE X
Offering superior cooling performance with support and moisture control, ICE X utilises a high filament polyester cooling yarn construction to lower body temperature when working out. This is supported by powerful elastane yarns that provides the right amount of stretch and recovery for cycling.
05. ALTA BADIA CHAMOIS
Italian-made maximum 120 density foam chamois with multi-zoned padding and pre-shaped technology to provide ultimate comfort. Engineered as a seamless one-piece design, perforated for excellent breathability and enhanced moisture management, with a low profile outer edge to prevent chafing. Antibacterial protection has been added for anti-odour control.

MEN'S ELITE CYCLE BIB SHORTS

MX4954B

SUBLIMATION/BULK DYE

SIZE RANGE: 2XS - 5XL

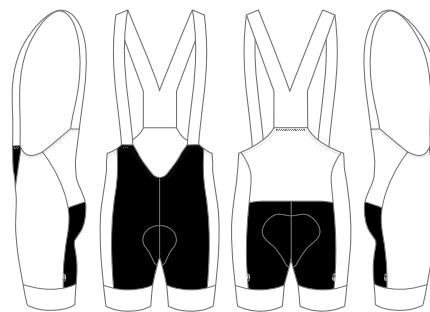


GARMENT FEATURES

01. ACF: Anatomical Cycle Fit
02. Alta Badia chamois
03. Reflective trims for visibility
04. 75mm wide Italian leg gripper for performance and comfort
05. Italian-engineered low profile one-piece bib strap for ultimate comfort

BULK DYE COLOUR OPTIONS

- Black
- Navy 282C
- Bluette 2728C
- Red 186C
- Gunmetal Grey 18-0201 TPX
- White



*Areas highlighted in black denotes bulk dye fabric.

FABRIC BENEFITS

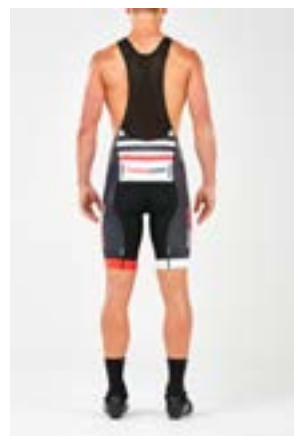
01. VELO POWER
Velo Power utilises Italian-made high-filament nylon yarns, coupled with high denier elastane fibres for exceptional durability and muscle holding ability.
02. ITALIA SUB
Italian-made and engineered specifically for cycle. This sublimation fabric offers customisation, extreme moisture management and high filament yarns to ensure extra comfort.
03. ALTA BADIA CHAMOIS
Italian-made maximum 120 density foam chamois with multi-zoned padding and pre-shaped technology to provide ultimate comfort. Engineered as a seamless one-piece design, perforated for excellent breathability and enhanced moisture management, with a low profile outer edge to prevent chafing. Antibacterial protection has been added for anti-odour control.

MEN'S PERFORM CYCLE BIB SHORTS

MX4960B

SUBLIMATION/BULK DYE

SIZE RANGE: 2XS - 5XL

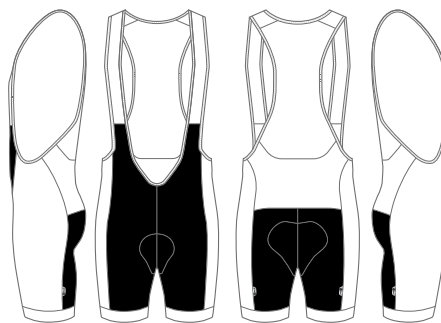


GARMENT FEATURES

01. ACF: Anatomical Cycle Fit
02. Stelvio chamois
03. Reflective trims for visibility
04. 48mm wide Italian leg gripper for performance and comfort
05. Mesh bib strap with low profile binding for comfort

BULK DYE COLOUR OPTIONS

- Black
- Navy 282C
- Reflex Blue C
- Red 186C
- Gunmetal Grey 18-0201 TPX
- White



*Areas highlighted in black denotes bulk dye fabric.

FABRIC BENEFITS

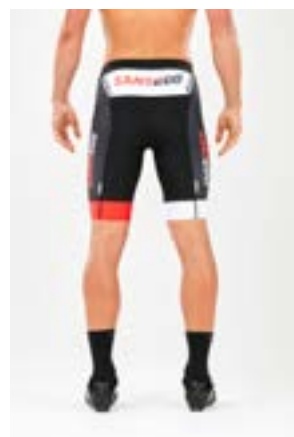
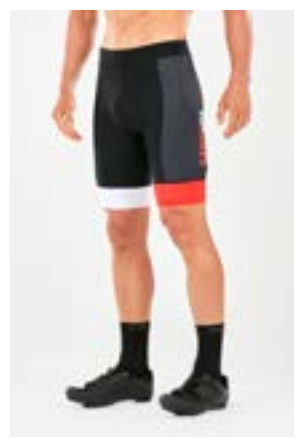
01. KINETIC POWER
Engineered specifically for cycle. This durable, high denier nylon elastane knit provides increased power through higher muscle holding ability.
02. ITALIA SUB
Italian-made and engineered specifically for cycle. This sublimation fabric offers customisation, extreme moisture management and high filament yarns to ensure extra comfort.
03. SENSOR MESH
Utilising a polyester-elastane breathable matrix for optimal air flow for the ultimate in moisture management.

MEN'S ELITE CYCLE SHORTS

MX4956B

SUBLIMATION/BULK DYE

SIZE RANGE: 2XS - 5XL



GARMENT FEATURES

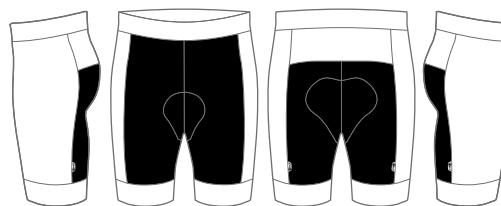
01. ACF: Anatomical Cycle Fit
02. Alta Badia chamois
03. Reflective trims for visibility
04. 75mm wide Italian leg gripper for performance and comfort

BULK DYE COLOUR OPTIONS

- Black
- Navy 282C
- Bluette 2728C
- Red 186C
- Gunmetal Grey 18-0201 TPX
- White

FABRIC BENEFITS

01. VELO POWER
Velo Power utilises Italian-made high-filament nylon yarns, coupled with high denier elastane fibres for exceptional durability and muscle holding ability.
02. ITALIA SUB
Italian-made and engineered specifically for cycle. This sublimation fabric offers customisation, extreme moisture management and high filament yarns to ensure extra comfort.
03. ALTA BADIA CHAMOIS
Italian-made maximum 120 density foam chamois with multi-zoned padding and pre-shaped technology to provide ultimate comfort. Engineered as a seamless one-piece design, perforated for excellent breathability and enhanced moisture management, with a low profile outer edge to prevent chafing. Antibacterial protection has been added for anti-odour control.



*Areas highlighted in black denotes bulk dye fabric.

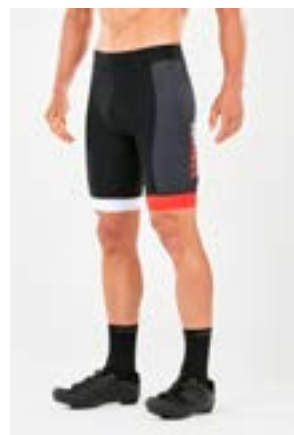
Levi is 188cm, 82kgs and wears a Medium

MEN'S PERFORM CYCLE SHORTS

MX4962B

SUBLIMATION/BULK DYE

SIZE RANGE: 2XS - 5XL



GARMENT FEATURES

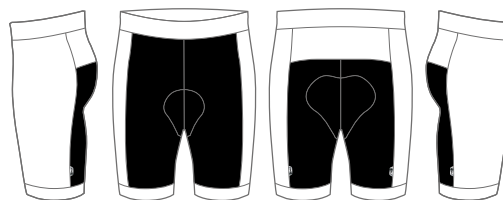
01. ACF: Anatomical Cycle Fit
02. Stelvio chamois
03. Reflective trims for visibility
04. 48mm wide Italian leg gripper for performance and comfort

BULK DYE COLOUR OPTIONS

- Black
- Navy 282C
- Reflex Blue C
- Red 186C
- Gunmetal Grey 18-0201 TPX
- White

FABRIC BENEFITS

01. KINETIC POWER
Engineered specifically for cycle. This durable, high denier nylon elastane knit provides increased power through higher muscle holding ability.
02. ITALIA SUB
Italian-made and engineered specifically for cycle. This sublimation fabric offers customisation, extreme moisture management and high filament yarns to ensure extra comfort.
03. SENSOR MESH
Utilising a polyester-elastane breathable matrix for optimal air flow for the ultimate in moisture management.



*Areas highlighted in black denotes bulk dye fabric.

Levi is 188cm, 82kgs and wears a Medium

MEN'S ELITE CYCLE JERSEY

MX4952A

SUBLIMATION

SIZE RANGE: 2XS - 5XL

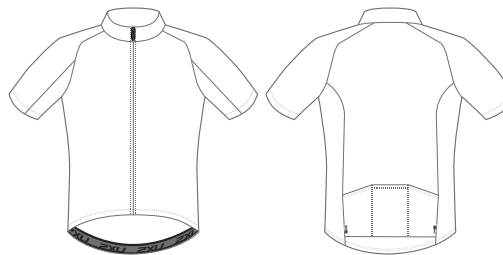


GARMENT FEATURES

01. ACF: Anatomical Cycle Fit
02. Reflective trims for visibility
03. Rear pockets for storage

FABRIC BENEFITS

01. HI FIL VELO
An Italian-made, cycle-specific HI FIL VELO performance fabric engineered for maximum moisture management. Cross channelled yarns wick vapour from the inner to the outer layers to keep the wearer dry and comfortable, while the mesh structure promotes breathability.
02. VELO MESH
High-filament yarns in a mesh knit structure to aid cooling and moisture control.



Levi is 188cm, 82kgs and wears a Medium

MEN'S PERFORM CYCLE JERSEY

MX4958A

SUBLIMATION

SIZE RANGE: 2XS - 5XL

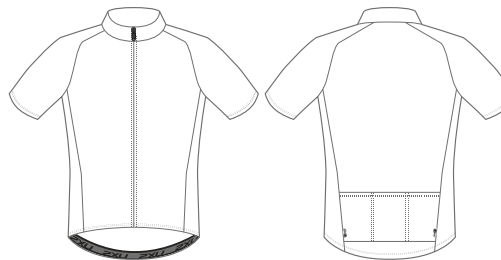


GARMENT FEATURES

01. ACF: Anatomical Cycle Fit
02. Reflective trims for visibility
03. Rear pockets for storage
04. Polygiene® antibacterial for lifetime odour elimination

FABRIC BENEFITS

01. HI FIL+
A performance fabric using high filament technology for maximum moisture management. Cross channelled yarns wick vapour from the inner to outer layers to keep the wearer dry and comfortable. Polygiene® antibacterial for lifetime odour elimination.
02. HI FIL VENT+
A high filament polyester yarn created into a cycle-specific vent knit structure to optimise ventilation and improve aerodynamics. Polygiene® antibacterial for lifetime odour elimination.



Levi is 188cm, 82kgs and wears a Medium

MEN'S SPRING CYCLE GILET

MX4966A

SUBLIMATION

SIZE RANGE: 2XS - 5XL

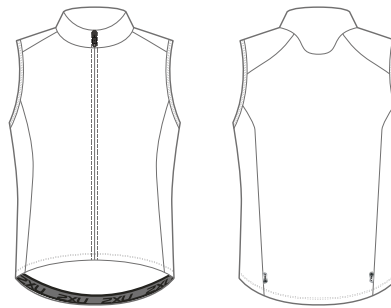


GARMENT FEATURES

01. ACF: Anatomical Cycle Fit
02. Reflective trims for visibility

FABRIC BENEFITS

01. VAPOR STRETCH
Lightweight stretch high gauge woven fabric that blocks out the wind while staying light and packable.
02. SENSOR MESH
Utilising a polyester-elastane breathable matrix for optimal air flow for the ultimate in moisture management.



Levi is 188cm, 82kgs and wears a Medium

MEN'S WIND DEFENCE CYCLE GILET

MX4968A

SUBLIMATION

SIZE RANGE: 2XS - 5XL



GARMENT FEATURES

01. ACF: Anatomical Cycle Fit
02. Reflective trims for visibility

FABRIC BENEFITS

01. 2X 20K STRETCH
Lightweight and flexible PU membrane that provides 20k waterproofing and 20k moisture vapour transfer. This fabric features a high filament jersey backing for comfort.
02. SENSOR MESH
Utilising a polyester-elastane breathable matrix for optimal air flow for the ultimate in moisture management.



Levi is 188cm, 82kgs and wears a Medium

MEN'S THERMAL LONGSLEEVE CYCLE JACKET

MX4964A

SUBLIMATION

SIZE RANGE: 2XS - 5XL

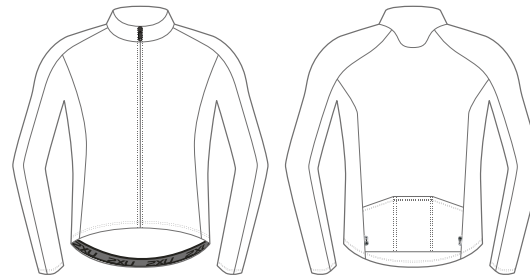


GARMENT FEATURES

01. ACF: Anatomical Cycle Fit
02. Reflective trims for visibility
03. Rear pockets for storage

FABRIC BENEFITS

01. VELO HEAT
Italian-made high filament brushed polyester to encourage the perfect microclimate. The high gauge knit provides dryness and warmth, while the brushed backing traps heat. The high filament x section yarns aid dryness.



Levi is 188cm, 82kgs and wears a Medium

MEN'S WIND DEFENCE CYCLE JACKET

MX4970A

SUBLIMATION

SIZE RANGE: 2XS - 5XL

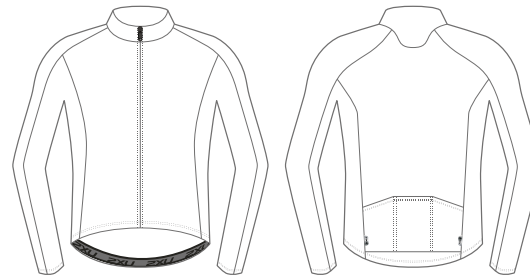


GARMENT FEATURES

01. ACF: Anatomical Cycle Fit
02. Reflective trims for visibility
03. Rear pockets for storage

FABRIC BENEFITS

01. 2X 20K STRETCH
Lightweight and flexible PU membrane that provides 20k waterproofing and 20k moisture vapour transfer. This fabric features a high filament jersey backing for comfort.



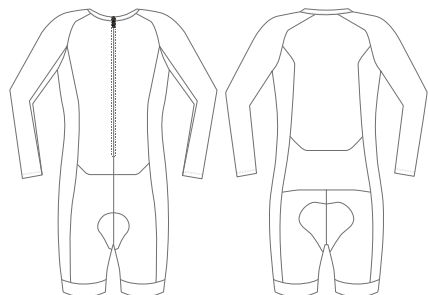
Levi is 188cm, 82kgs and wears a Medium



WOMEN'S

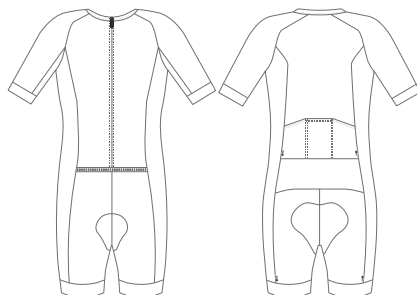
CUSTOM CYCLE COLLECTION

WOMEN'S CUSTOM CYCLE COLLECTION



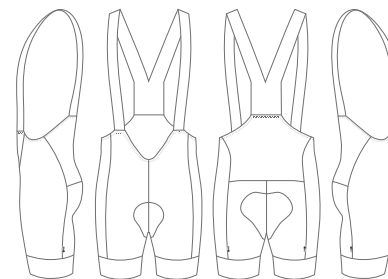
WX4975D

Women's Longsleeve Cycle Skinsuit



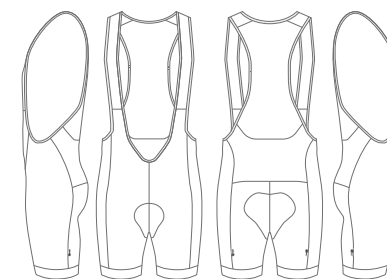
WX4973D

Women's Cycle Skinsuit



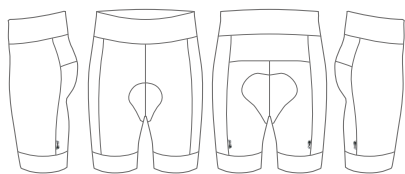
WX4955B

Women's Elite Cycle Bib Shorts



WX4961B

Women's Perform Cycle Bib Shorts



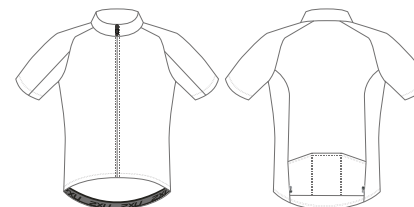
WX4957B

Women's Elite Cycle Shorts



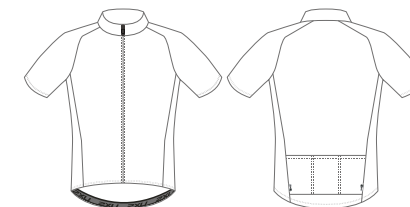
WX4963B

Women's Perform Cycle Shorts



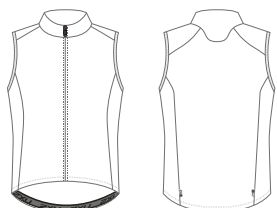
WX4953A

Women's Elite Cycle Jersey



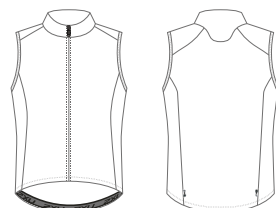
WX4959A

Women's Perform Cycle Jersey



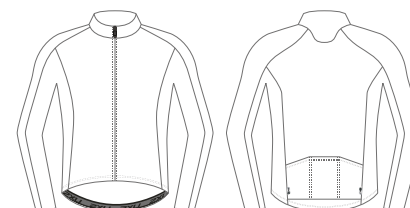
WX4967A

Women's Spring Cycle Gilet



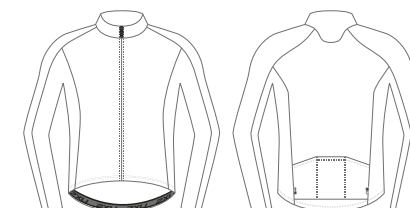
WX4969A

Women's Wind Defence Cycle Gilet



WX4965A

Women's Thermal Longsleeve Cycle Jersey



WX4971A

Women's Wind Defence Cycle Jacket

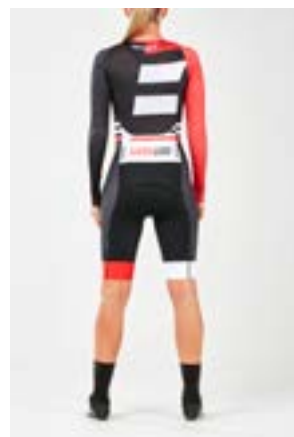
WOMEN'S LONGSLEEVE CYCLE SKINSUIT

WX4975D

SUBLIMATION/BULK DYE

SIZE RANGE: 2XS - 4XL

Steph is 182cm, 64kgs and wears a Small

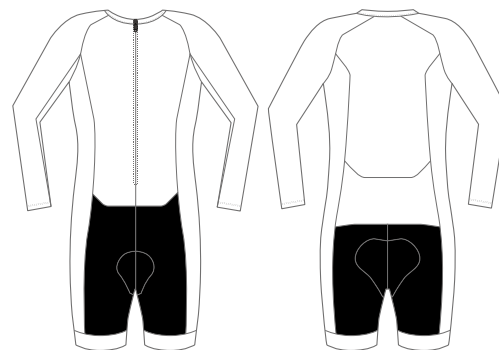


GARMENT FEATURES

01. ACF: Anatomical Cycle Fit
02. Alta Badia chamois
03. Reflective trims for visibility
04. Rear pockets for storage
05. 75mm wide Italian leg grippers for performance and comfort

BULK DYE COLOUR OPTIONS

- Black
- Navy 282C
- Bluette 2728C
- Red 186C
- Gunmetal Grey 18-0201 TPX
- White



*Areas highlighted in black denotes bulk dye fabric.

FABRIC BENEFITS

01. VELO POWER
Velo Power utilises Italian-made high-filament nylon yarns, coupled with high denier elastane fibres for exceptional durability and muscle holding ability.
02. KINETIC SPEED
Swiss-made Kinetic Speed, with golf ball air trapping performance for increased aerodynamics.
03. ICE X MESH
Draws heat from the body and lowers skin temperature by up to 3°C / 5.4°F. The ultimate solution for endurance demands, ICE X MESH will keep athletes cool through the harshest conditions.
04. ICE X
Offering superior cooling performance with support and moisture control, ICE X utilises a high filament polyester cooling yarn construction to lower body temperature when working out. This is supported by powerful elastane yarns that provides the right amount of stretch and recovery for cycling.
05. ALTA BADIA CHAMOIS
Italian-made maximum 120 density foam chamois with multi-zoned padding and pre-shaped technology to provide ultimate comfort. Engineered as a seamless one-piece design, perforated for excellent breathability and enhanced moisture management, with a low profile outer edge to prevent chafing. Antibacterial protection has been added for anti-odour control.

WOMEN'S CYCLE SKINSUIT

WX4973D

SUBLIMATION/BULK DYE

SIZE RANGE: 2XS - 4XL

Steph is 182cm, 64kgs and wears a Small

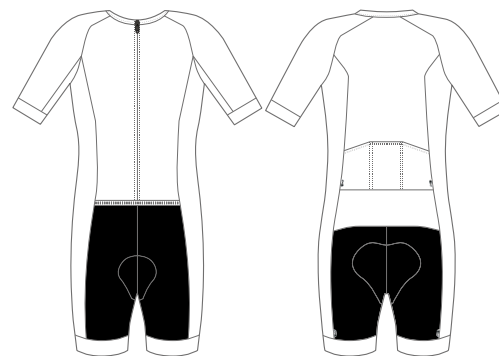


GARMENT FEATURES

01. ACF: Anatomical Cycle Fit
02. Alta Badia chamois
03. Reflective trims for visibility
04. Rear pockets for storage
05. 75mm wide Italian leg grippers for performance and comfort

BULK DYE COLOUR OPTIONS

- Black
- Navy 282C
- Bluette 2728C
- Red 186C
- Gunmetal Grey 18-0201 TPX
- White



*Areas highlighted in black denotes bulk dye fabric.

FABRIC BENEFITS

01. VELO POWER
Velo Power utilises Italian-made high-filament nylon yarns, coupled with high denier elastane fibres for exceptional durability and muscle holding ability.
02. KINETIC SPEED
Swiss-made Kinetic Speed, with golf ball air trapping performance for increased aerodynamics.
03. ICE X MESH
Draws heat from the body and lowers skin temperature by up to 3°C / 5.4°F. The ultimate solution for endurance demands, ICE X MESH will keep athletes cool through the harshest conditions.
04. ICE X
Offering superior cooling performance with support and moisture control, ICE X utilises a high filament polyester cooling yarn construction to lower body temperature when working out. This is supported by powerful elastane yarns that provides the right amount of stretch and recovery for cycling.
05. ALTA BADIA CHAMOIS
Italian-made maximum 120 density foam chamois with multi-zoned padding and pre-shaped technology to provide ultimate comfort. Engineered as a seamless one-piece design, perforated for excellent breathability and enhanced moisture management, with a low profile outer edge to prevent chafing. Antibacterial protection has been added for anti-odour control.

WOMEN'S ELITE CYCLE BIB SHORTS

WX4955B

SUBLIMATION/BULK DYE

SIZE RANGE: 2XS - 4XL

Steph is 182cm, 64kgs and wears a Small

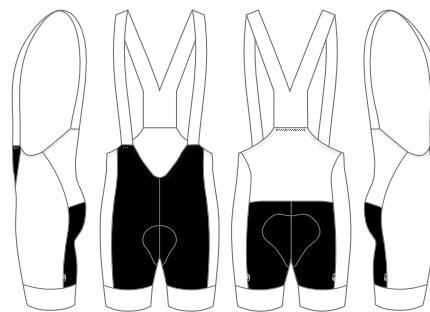


GARMENT FEATURES

01. ACF: Anatomical Cycle Fit
02. Alta Badia chamois
03. Reflective trims for visibility
04. 75mm wide Italian leg gripper for performance and comfort
05. Italian-engineered low profile one-piece bib strap for ultimate comfort

BULK DYE COLOUR OPTIONS

- Black
- Navy 282C
- Bluette 2728C
- Red 186C
- Gunmetal Grey 18-0201 TPX
- White



*Areas highlighted in black denotes bulk dye fabric.

FABRIC BENEFITS

01. VELO POWER
Velo Power utilises Italian-made high-filament nylon yarns, coupled with high denier elastane fibres for exceptional durability and muscle holding ability.
02. ITALIA SUB
Italian-made and engineered specifically for cycle. This sublimation fabric offers customisation, extreme moisture management and high filament yarns to ensure extra comfort.
03. ALTA BADIA CHAMOIS
Italian-made maximum 120 density foam chamois with multi-zoned padding and pre-shaped technology to provide ultimate comfort. Engineered as a seamless one-piece design, perforated for excellent breathability and enhanced moisture management, with a low profile outer edge to prevent chafing. Antibacterial protection has been added for anti-odour control.

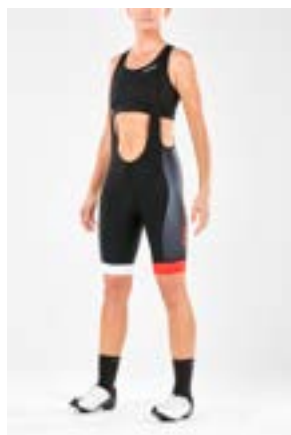
WOMEN'S PERFORM CYCLE BIB SHORTS

WX4961B

SUBLIMATION/BULK DYE

SIZE RANGE: 2XS - 4XL

Steph is 182cm, 64kgs and wears a Small

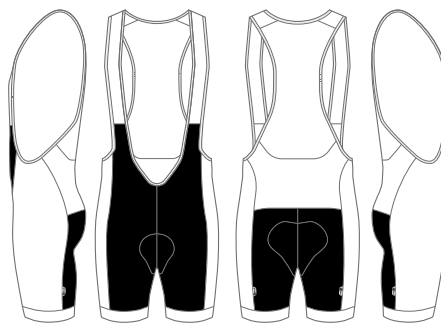


GARMENT FEATURES

01. ACF: Anatomical Cycle Fit
02. Stelvio chamois
03. Reflective trims for visibility
04. 48mm wide Italian leg gripper for performance and comfort
05. Mesh bib strap with low profile binding for comfort

BULK DYE COLOUR OPTIONS

-  Black
-  Navy 282C
-  Reflex Blue C
-  Red 186C
-  Gunmetal Grey 18-0201 TPX
-  White



*Areas highlighted in black denotes bulk dye fabric.

FABRIC BENEFITS

01. **KINETIC POWER**
Engineered specifically for cycle. This durable, high denier nylon elastane knit provides increased power through higher muscle holding ability.
02. **ITALIA SUB**
Italian-made and engineered specifically for cycle. This sublimation fabric offers customisation, extreme moisture management and high filament yarns to ensure extra comfort.
03. **SENSOR MESH**
Utilising a polyester-elastane breathable matrix for optimal air flow for the ultimate in moisture management.

WOMEN'S ELITE CYCLE SHORTS

WX4957B

SUBLIMATION/BULK DYE

SIZE RANGE: 2XS - 4XL

Steph is 182cm, 64kgs and wears a Small

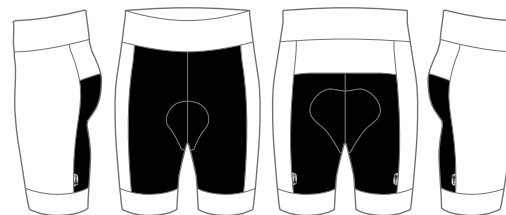


GARMENT FEATURES

01. ACF: Anatomical Cycle Fit
02. Alta Badia chamois
03. Reflective trims for visibility
04. 75mm wide Italian leg gripper for performance and comfort

BULK DYE COLOUR OPTIONS

- Black
- Navy 282C
- Bluette 2728C
- Red 186C
- Gunmetal Grey 18-0201 TPX
- White



*Areas highlighted in black denotes bulk dye fabric.

FABRIC BENEFITS

VELO POWER

Velo Power utilises Italian-made high-filament nylon yarns, coupled with high denier elastane fibres for exceptional durability and muscle holding ability.

01. ITALIA SUB

Italian-made and engineered specifically for cycle. This sublimation fabric offers customisation, extreme moisture management and high filament yarns to ensure extra comfort.

02. ALTA BADIA CHAMOIS

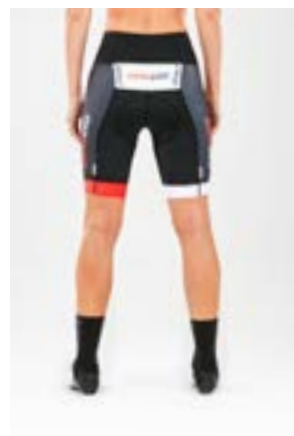
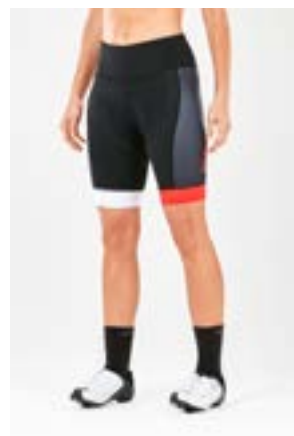
Italian-made maximum 120 density foam chamois with multi-zoned padding and pre-shaped technology to provide ultimate comfort. Engineered as a seamless one-piece design, perforated for excellent breathability and enhanced moisture management, with a low profile outer edge to prevent chafing. Antibacterial protection has been added for anti-odour control.

WOMEN'S PERFORM CYCLE SHORTS

WX4963B

SUBLIMATION/BULK DYE

SIZE RANGE: 2XS - 4XL



GARMENT FEATURES

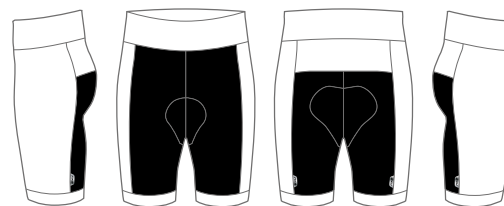
01. ACF: Anatomical Cycle Fit
02. Stelvio chamois
03. Reflective trims for visibility
04. 48mm wide Italian leg gripper for performance and comfort

BULK DYE COLOUR OPTIONS

- Black
- Navy 282C
- Reflex Blue C
- Red 186C
- Gunmetal Grey 18-0201 TPX
- White

FABRIC BENEFITS

01. KINETIC POWER
Engineered specifically for cycle. This durable, high denier nylon elastane knit provides increased power through higher muscle holding ability.
02. ITALIA SUB
Italian-made and engineered specifically for cycle. This sublimation fabric offers customisation, extreme moisture management and high filament yarns to ensure extra comfort.
03. SENSOR MESH
Utilising a polyester-elastane breathable matrix for optimal air flow for the ultimate in moisture management.



*Areas highlighted in black denotes bulk dye fabric.

Steph is 182cm, 64kgs and wears a Small

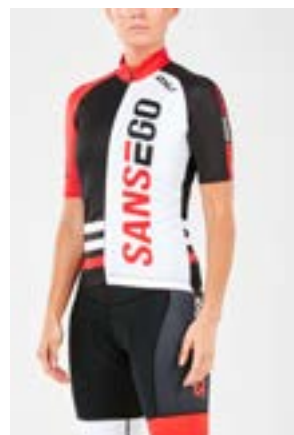
WOMEN'S ELITE CYCLE JERSEY

WX4953A

SUBLIMATION

SIZE RANGE: 2XS - 4XL

Steph is 182cm, 64kgs and wears a Small

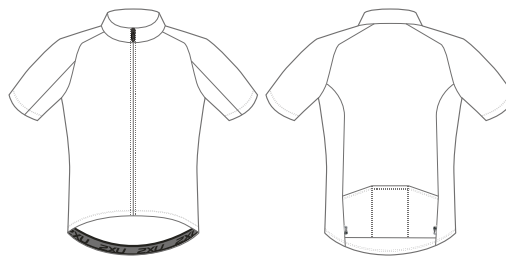


GARMENT FEATURES

01. ACF: Anatomical Cycle Fit
02. Reflective trims for visibility
03. Rear pockets for storage

FABRIC BENEFITS

01. HI FIL VELO
An Italian-made, cycle-specific HI FIL VELO performance fabric engineered for maximum moisture management. Cross channelled yarns wick vapour from the inner to the outer layers to keep the wearer dry and comfortable, while the mesh structure promotes breathability.
02. VELO MESH
High-filament yarns in a mesh knit structure to aid cooling and moisture control.



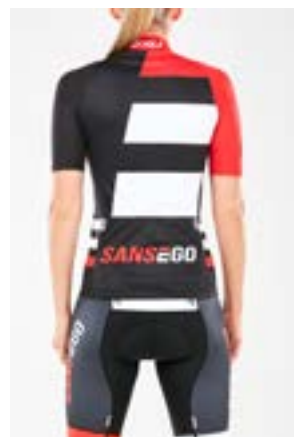
WOMEN'S PERFORM CYCLE JERSEY

WX4959A

SUBLIMATION

SIZE RANGE: 2XS - 4XL

Steph is 182cm, 64kgs and wears a Small

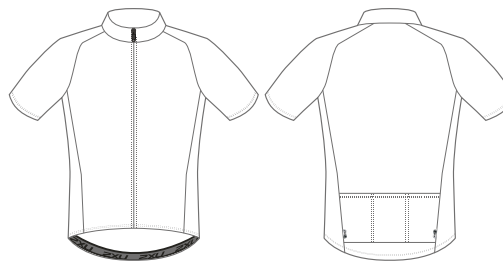


GARMENT FEATURES

01. ACF: Anatomical Cycle Fit
02. Reflective trims for visibility
03. Rear pockets for storage
04. Polygiene® antibacterial for lifetime odour elimination

FABRIC BENEFITS

01. HI FIL+
A performance fabric using high filament technology for maximum moisture management. Cross channelled yarns wick vapour from the inner to outer layers to keep the wearer dry and comfortable. Polygiene® antibacterial for lifetime odour elimination.
02. HI FIL VENT+
A high filament polyester yarn created into a cycle-specific vent knit structure to optimise ventilation and improve aerodynamics. Polygiene® antibacterial for lifetime odour elimination.



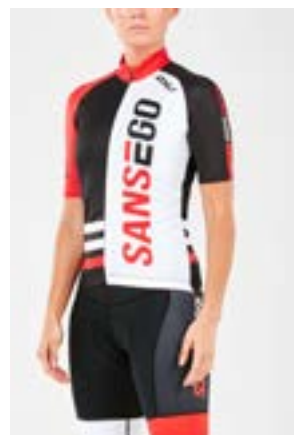
WOMEN'S SPRING CYCLE GILET

WX4967A

SUBLIMATION

SIZE RANGE: 2XS - 4XL

Steph is 182cm, 64kgs and wears a Small

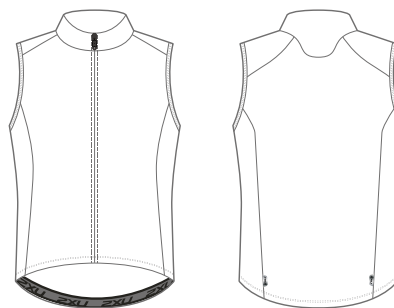


GARMENT FEATURES

01. ACF: Anatomical Cycle Fit
02. Reflective trims for visibility

FABRIC BENEFITS

01. VAPOR STRETCH
Lightweight stretch high gauge woven fabric that blocks out the wind while staying light and packable.
02. SENSOR MESH
Utilising a polyester-elastane breathable matrix for optimal air flow for the ultimate in moisture management.



WOMEN'S WIND DEFENCE CYCLE GILET

WX4969A

SUBLIMATION

SIZE RANGE: 2XS - 4XL

Steph is 182cm, 64kgs and wears a Small

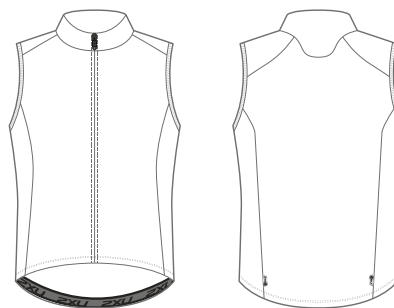


GARMENT FEATURES

01. ACF: Anatomical Cycle Fit
02. Reflective trims for visibility

FABRIC BENEFITS

01. 2X 20K STRETCH
Lightweight and flexible PU membrane that provides 20k waterproofing and 20k moisture vapour transfer. This fabric features a high filament jersey backing for comfort.
02. SENSOR MESH
Utilising a polyester-elastane breathable matrix for optimal air flow for the ultimate in moisture management.



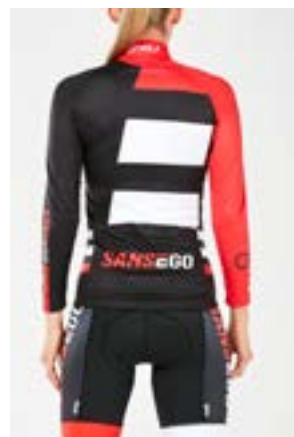
WOMEN'S THERMAL LONGSLEEVE CYCLE JACKET

WX4965A

SUBLIMATION

SIZE RANGE: 2XS - 4XL

Steph is 182cm, 64kgs and wears a Small

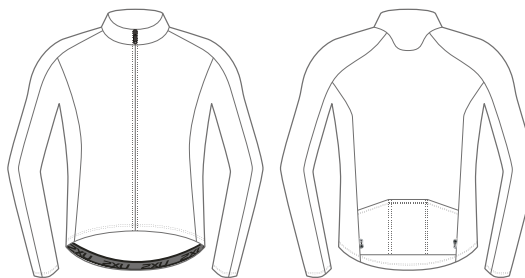


GARMENT FEATURES

01. ACF: Anatomical Cycle Fit
02. Reflective trims for visibility
03. Rear pockets for storage

FABRIC BENEFITS

01. VELO HEAT
Italian-made high filament brushed polyester to encourage the perfect microclimate. The high gauge knit provides dryness and warmth, while the brushed backing traps heat. The high filament x section yarns aid dryness.



WOMEN'S WIND DEFENCE CYCLE JACKET

WX4971A

SUBLIMATION

SIZE RANGE: 2XS - 4XL

Steph is 182cm, 64kgs and wears a Small

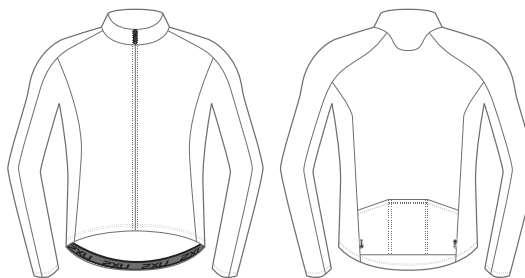


GARMENT FEATURES

01. ACF: Anatomical Cycle Fit
02. Reflective trims for visibility
03. Rear pockets for storage

FABRIC BENEFITS

01. 2X 20K STRETCH
Lightweight and flexible PU membrane that provides 20k waterproofing and 20k moisture vapour transfer. This fabric features a high filament jersey backing for comfort.

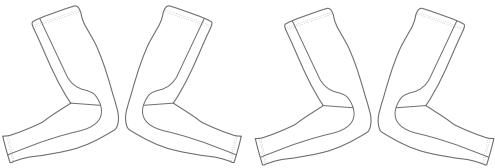




UNISEX

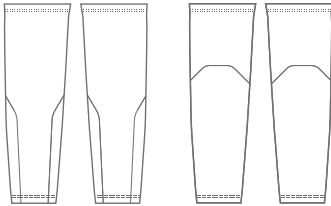
CUSTOM CYCLE COLLECTION ACCESSORIES

UNISEX CUSTOM CYCLE COLLECTION ACCESSORIES



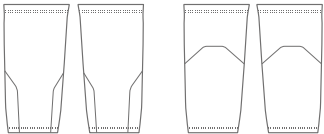
UX4976E

Unisex Cycle Arm Warmers



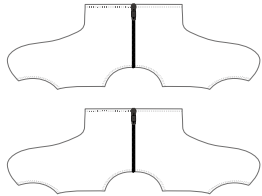
UX4977E

Unisex Cycle Leg Warmers



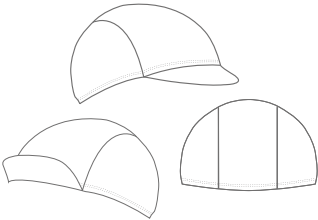
UX4978E

Unisex Cycle Knee Warmers



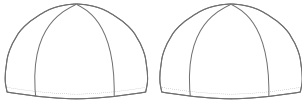
UX4979E

Unisex Cycle Booties



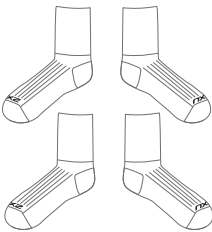
UX4982F

Unisex Cycle Cap



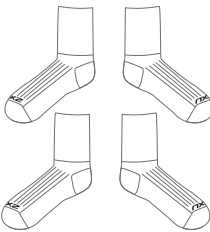
UX4981F

Unisex Cycle Beanie



UX5444E

Unisex Sublimated Cycle Socks



UX5481E

Unisex Knitted Cycle Socks

UNISEX CYCLE ARM WARMERS

UX4976A

SUBLIMATION

SIZE RANGE: 2XS-2XL

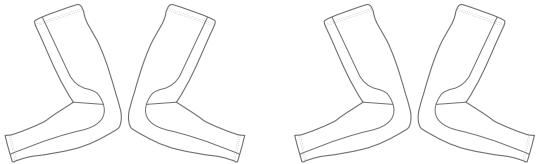


GARMENT FEATURES

01. ACF: Anatomical Cycle Fit

FABRIC BENEFITS

01. VELO PRO HEAT
High-filament yarn coupled with high density lycra yarn gives high power, durability and breathability. The brushed backing traps heat for warmth and increases moisture management.



UNISEX CYCLE LEG WARMERS

UX4977B

SUBLIMATION

SIZE RANGE: 2XS-2XL

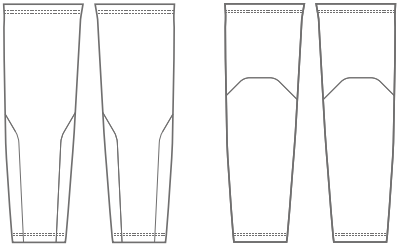


GARMENT FEATURES

01. ACF: Anatomical Cycle Fit

FABRIC BENEFITS

01. VELO PRO HEAT
High-filament yarn coupled with high density lycra yarn gives high power, durability and breathability. The brushed backing traps heat for warmth and increases moisture management.



UNISEX CYCLE KNEE WARMERS

UX4978B

SUBLIMATION

SIZE RANGE: 2XS-2XL

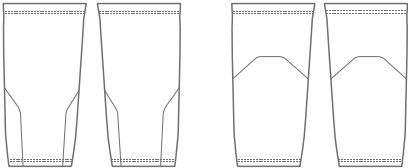


GARMENT FEATURES

01. ACF: Anatomical Cycle Fit

FABRIC BENEFITS

01. VELO PRO HEAT
High-filament yarn coupled with high density lycra yarn gives high power, durability and breathability. The brushed backing traps heat for warmth and increases moisture management.



UNISEX CYCLE BOOTIES

UX4979E

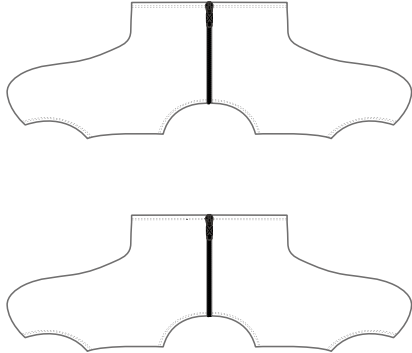
SUBLIMATION

SIZE RANGE: S/M,L/XL,2XL/3XL



GARMENT FEATURES

- 01. Rear zipper for easy placement and removal



FABRIC BENEFITS

- 01. FLEX PRO
A polyester elastane blend to provide essential stretch and recovery.

UNISEX CYCLE CAP

UX4982F

SUBLIMATION

SIZE RANGE: S-XL

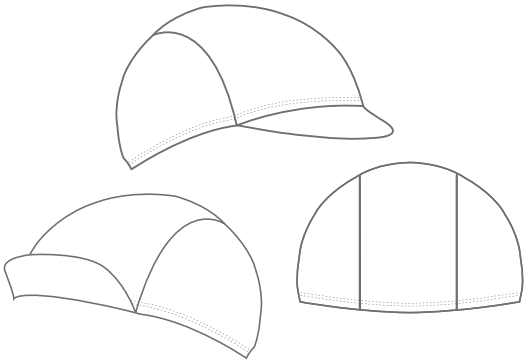


GARMENT FEATURES

- 01. Front peak to provide protection from the elements
- 02. Low profile to sit discreetly under a helmet

FABRIC BENEFITS

- 01. SMD
High-filament yarns in a mesh knit structure to ensure moisture control.



UNISEX CYCLE BEANIE

UX4981F

SUBLIMATION

SIZE RANGE: S-XL

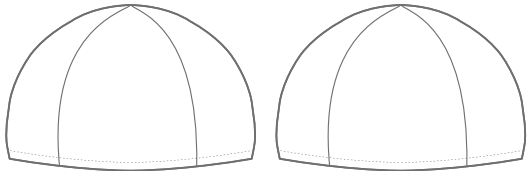


GARMENT FEATURES

01. Low profile to sit discreetly under a helmet

FABRIC BENEFITS

01. HI FIL XTREME
High filament polyester yarns provides extreme moisture management and breathability, while the brushed inner delivers warmth and comfort.



UNISEX SUBLIMATED CYCLE SOCKS

UX5444E

SUBLIMATION/ KNIT

SIZE RANGE: XS-XL

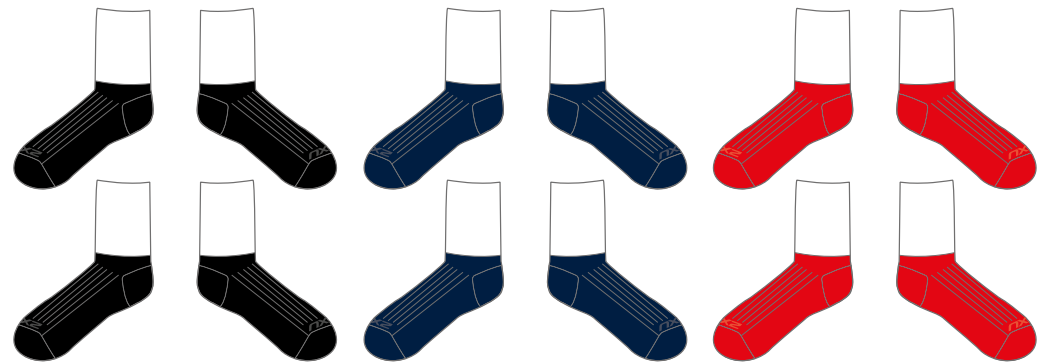


GARMENT FEATURES

01. Anatomical Left and Right foot design for comfort
02. Mild arch support
03. Engineered knit for articulated venting
04. BLK, NVY, RED foot moulds

FABRIC BENEFITS

01. Using high-filament nylon combined with high denier lycra to produce a firm fitting, durable and breathable fabric with excellent moisture management.



UNISEX KNITTED CYCLE SOCKS

UX5481E

KNIT

SIZE RANGE: XS-XL

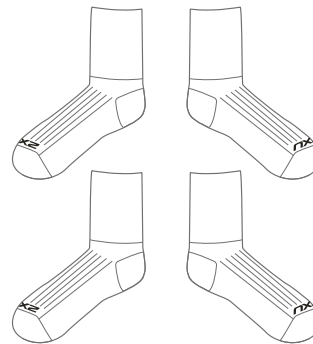


GARMENT FEATURES

01. Anatomical Left and Right foot design for comfort
02. Mild arch support
03. Engineered knit for articulated venting
04. +200 available thread colours

FABRIC BENEFITS

01. Using high-filament nylon combined with high denier lycra to produce a firm fitting, durable and breathable fabric with excellent moisture management.







SIZE GUIDE

CUSTOM CYCLE COLLECTION

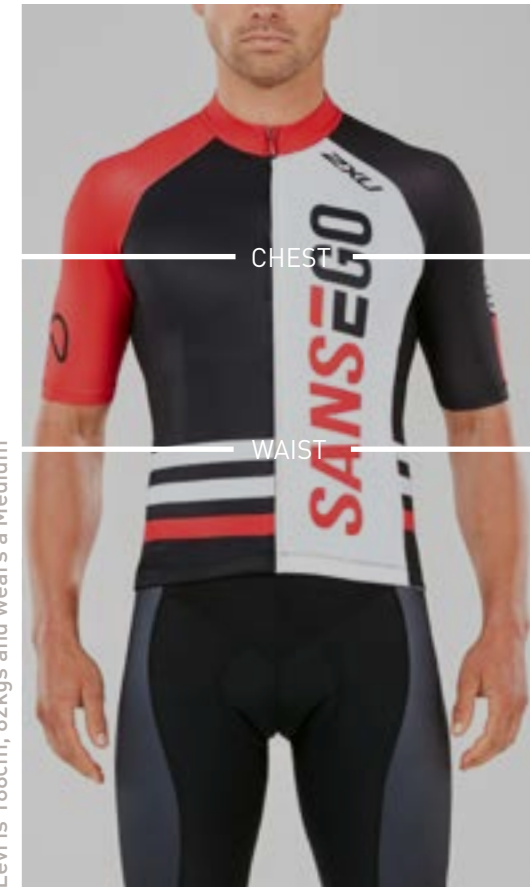
CUSTOM CYCLE COLLECTION SIZING INFORMATION - MEN'S

MEN'S SIZING

MEASUREMENT (circumference)		XS	S	M	L	XL	2XL	3XL	4XL
Chest	cm	87-91	92-96	97-101	102-106	107-111	112-116	117-121	122-126
	inches	34 ¹ / ₄ -35 ⁷ / ₈	36 ¹ / ₄ -35 ³ / ₄	38 ¹ / ₈ -39 ³ / ₄	40 ¹ / ₈ -41 ³ / ₄	42 ¹ / ₈ -43 ³ / ₄	44 ¹ / ₈ -45 ⁵ / ₈	46 ¹ / ₈ -47 ⁵ / ₈	48-49 ⁵ / ₈
Waist	cm	70-74	75-79	80-84	85-89	90-94	95-99	100-104	105-109
	inches	27 ¹ / ₂ -29 ¹ / ₈	29 ¹ / ₂ -31 ¹ / ₈	31 ¹ / ₂ -33	33 ¹ / ₂ -35	35 ¹ / ₈ -37	37 ³ / ₈ -39	39 ³ / ₈ -41	41 ³ / ₈ -42 ⁷ / ₈

UNISEX SOCK SIZING

	XS	S	M	L	XL
US	>4	4-6.5	7-9.5	10-13	<13
EU	>34	34-37	38-41	42-46	<46



Levi is 188cm, 82kgs and wears a Medium

CUSTOM CYCLE COLLECTION SIZING INFORMATION - WOMEN'S

WOMEN'S SIZING

MEASUREMENT (circumference)		2XS	XS	S	M	L	XL	2XL	3XL
Bust	cm	78-82	83-87	88-92	93 - 97	98 -102	103-107	108-112	113-117
	inches	30 ³ / ₄ -32 ¹ / ₄	32 ⁵ / ₈ -34 ¹ / ₄	34 ⁵ / ₄ -36 ¹ / ₄	36 ⁵ / ₈ -38 ¹ / ₄	38 ⁵ / ₈ -40 ¹ / ₄	40 ¹ / ₂ -42 ¹ / ₈	42 ¹ / ₂ -44 ¹ / ₈	44 ¹ / ₂ -46
Waist	cm	58-62	63-67	68-72	73-77	78-82	83-87	88-92	93-97
	inches	22 ³ / ₈ -24 ³ / ₈	24 ³ / ₄ -26 ³ / ₈	26 ³ / ₄ -28 ³ / ₈	28 ³ / ₄ -30 ³ / ₈	30 ³ / ₄ -32 ¹ / ₄	32 ³ / ₄ -34 ¹ / ₄	34 ⁵ / ₈ -36 ¹ / ₄	36 ⁵ / ₈ -38 ¹ / ₄
Hip	cm	86-90	91-95	96-100	101-105	106-110	111-115	116-120	121-125
	inches	33 ⁷ / ₈ -35 ¹ / ₂	35 ⁷ / ₈ -37 ³ / ₈	37 ³ / ₄ -39 ³ / ₈	39 ³ / ₄ -41 ³ / ₈	41 ³ / ₄ -43 ³ / ₈	43 ³ / ₄ -54 ¹ / ₄	45 ⁵ / ₈ -47 ¹ / ₄	47 ⁵ / ₈ -49 ¹ / ₄



Steph is 182cm, 64kgs and wears a Small

The logo features the text '2XU' in a bold, italicized, sans-serif font. Below it, the word 'CUSTOM' is written in a smaller, spaced-out, all-caps sans-serif font, contained within a white rectangular bar.

2XU
C U S T O M