

BSR RANGE



2XU
C U S T O M

2XU
C U S T O M

BSR FABRIC TECHNICAL INFORMATION

The BSR range uses high-end fabric types to ensure optimal fit for each body part. As a premium global sportswear brand, 2XU's point of difference is a unique fabric combination that is light, flexible, powerful and durable; delivering physiological benefits far beyond the competition.

3D THERMAL

A 3D knit structure of this mesh fabric comes finished with a brushed underside to offer a seriously warm, bulk-free solution. High-filament polyester yarns deliver extreme moisture management and optimal thermoregulation.

HI^FIL +

Utilising high filament technology, 2XU has engineered a performance fabric to maximise moisture management. Cross-channeled yarns wick vapour from the inner to outer layers to keep the wearer as dry and comfortable as possible, while a mesh structure promises breathability. Hi FIL+ includes Polygiene® odour control technology ensuring you stay fresh and odour free. Wear more, wash less and reduce your environmental footprint.

HI^FIL STRETCH

Utilising high-filament technology and elastane fibres, 2XU has engineered a performance fabric to maximise moisture management while offering stretch for flexibility.

VAPOR MESH

Utilising a durable and lightweight mesh structure, 2XU has engineered a performance fabric to deliver superior moisture management and comfort.

VAPOR STRETCH

Featuring micro-filament polyester yarn with hydrophobic properties, this fabric offers supreme stretch and comfort. A lower denier (finer) yarn on the outside wicks moisture from the higher denier (thicker) yarn on the inside to keep the wearer comfortable and dry. Moisture managing and zero cling to the body.

X LITE LINING

Light-weight with superior breathability, this brief liner keeps the wearer dry and comfortable through every workout.

X STRETCH FLEECE

Engineered to offer an equilibrium environment between the skin and fabric, this premium membrane offers stretch for flexibility, a soft micro fleece inner plus superior waterproof and vapour release ratings.

EMBELLISHMENT OPTIONS

Customise your BSR garments by using one of the following embellishment options with your branding.



SCREEN PRINT

Screen printing is the most common method of textile printing, as it can be printed on almost all fabric types and provides long lasting prints with an accurate colour reproduction (based on Pantone C colour codes). Screen printing is the preferred method for designs consisting of few colours and not featuring too much detail. Due to the set-up fees for each individual colour used, screen printing is recommended for mid to larger order quantities from a costing point of view. Logos featuring a colour gradient or that are too fine in detail can not be screen printed.



HEAT TRANSFER

Heat transfer prints are designs pressed onto garments via high-temperature and heavy pressure. This printing method allows for both fine logo details and colour gradients as well as multiple colours without extra costs. With less durability than screen print or embroidery, we recommend cold machine wash only.



EMBROIDERY

Embroidery is the longest lasting embellishment method and provides a quality finish to garments. This method allows multiple colours per logo without any extra costs, and works on most fabric types. Whilst providing a nice finish on outer layers (e.g. jackets), embroidery is not ideal for larger back logos, and chest logos applied on a thin/breathable fabric. Embroidery is not available for small and intricate designs, or for colour gradients.

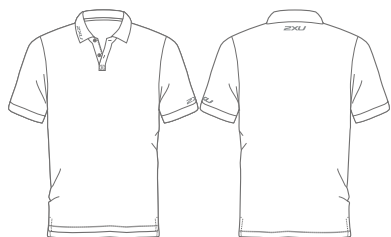


MEN'S

BSR COLLECTION

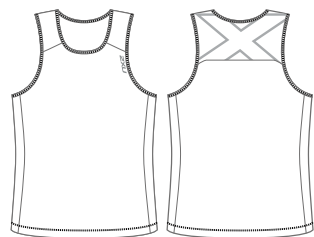


MEN'S BSR COLLECTION



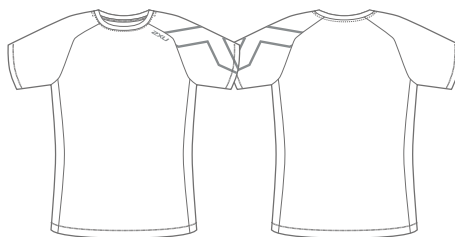
MR4896A

BSR Performance Polo



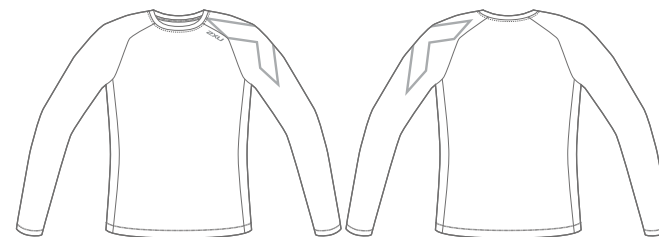
MR4819A

BSR Active Tank



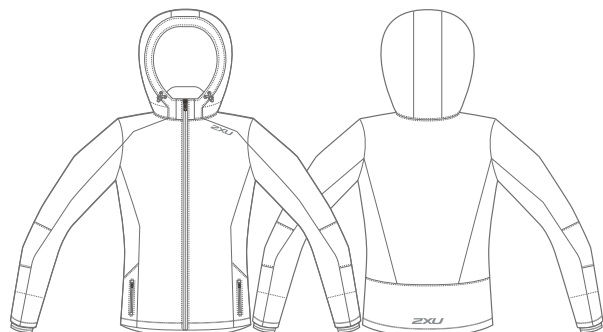
MR4818A

BSR Active S/S Tee



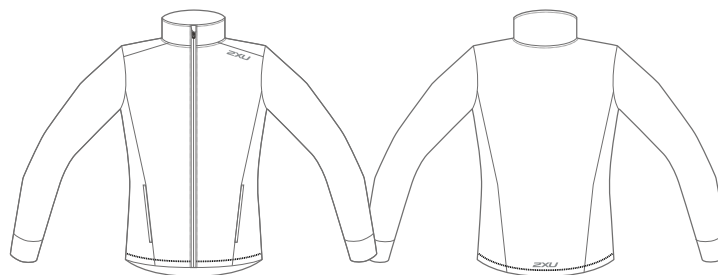
MR5158A

BSR Active L/S Shirt



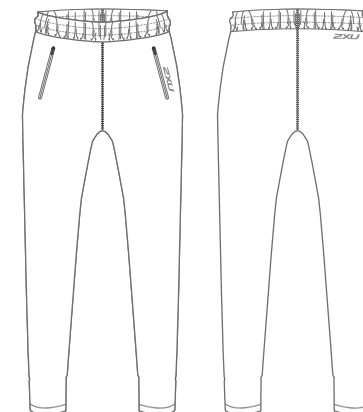
MR4821A

BSR Membrane Jacket



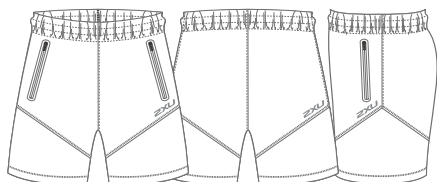
MR4823A

BSR Track Jacket



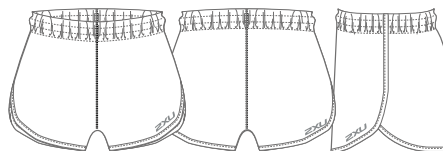
MR4825B

BSR Track Pant



MR4827B

BSR 9" Parade Short



MR4829B

BSR 4" Run Short



MEN'S BSR PERFORMANCE POLO

MR4896A

COLOUR WAYS: BLACK, NAVY, WHITE

SIZE RANGE: 2XS - 5XL



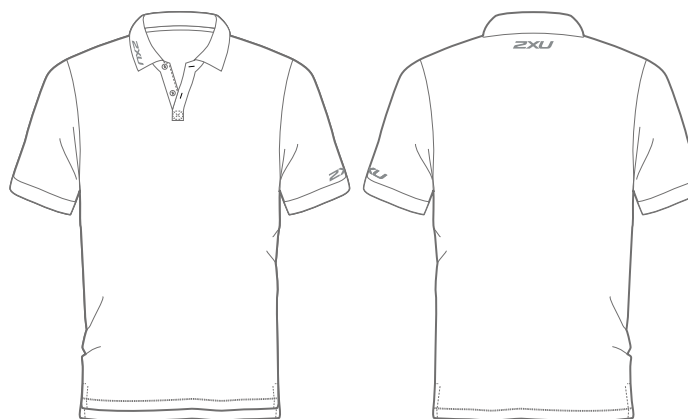
GARMENT FEATURES

01. Semi-fitted, classic style polo.
02. Self fabric collar with two-button placket.
03. Short sleeves with self fabric armbands.
04. Side vents with tennis tail at hem for full range of motion.
05. Chafe-free flatlock seam construction.
06. Traditional 2XU branding.
07. Designed to meet off-field needs.

FABRIC BENEFITS

01. Utilising 2XU's breakthrough moisture management technology to keep you drier through high-filament yarns and cooler through our advanced knit structure.
02. POLYGIENE® odour technology ensures you stay fresh and odour-free. Wear more, wash less and reduce your environmental footprint.

EMBELLISHMENT RECOMMENDATIONS



Levi is 188cm, 82kgs and wears a Medium

MEN'S BSR ACTIVE L/S SHIRT

MR5158A

COLOUR WAYS: BLACK, NAVY, WHITE

SIZE RANGE: 2XS - 5XL



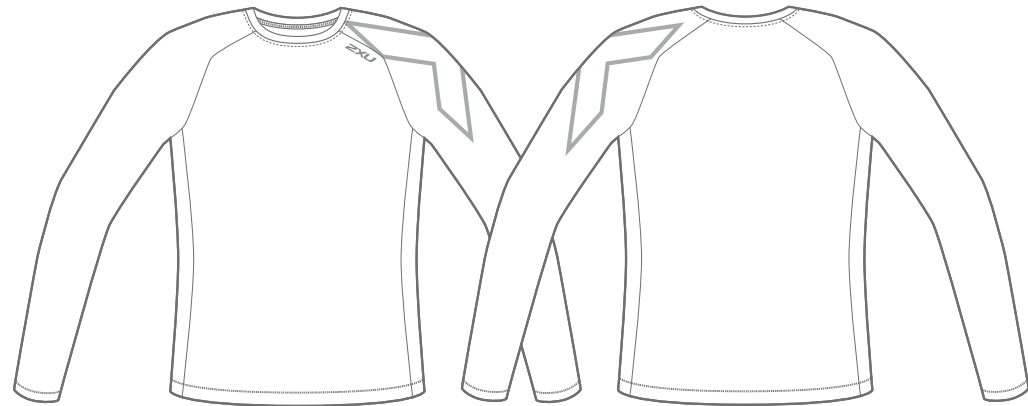
GARMENT FEATURES

01. Semi-fitted, active style tee.
02. Crew neckline with neck band and interior taping for comfort and durability.
03. Long sleeves with raglan design.
04. Chafe-free flatlock seam construction.
05. X-device branding on the left sleeve.
06. Designed to meet on and off-field needs.

FABRIC BENEFITS

01. Utilising 2XU's breakthrough moisture management technology to keep you drier through high-filament yarns and cooler through our advanced knit structure.
02. POLYGIENE® odour technology ensures you stay fresh and odour-free. Wear more, wash less and reduce your environmental footprint.

EMBELLISHMENT RECOMMENDATIONS



Levi is 188cm, 82kgs and wears a Medium

MEN'S BSR ACTIVE TANK

MR4819A

COLOUR WAYS: BLACK, NAVY, WHITE

SIZE RANGE: 2XS - 5XL



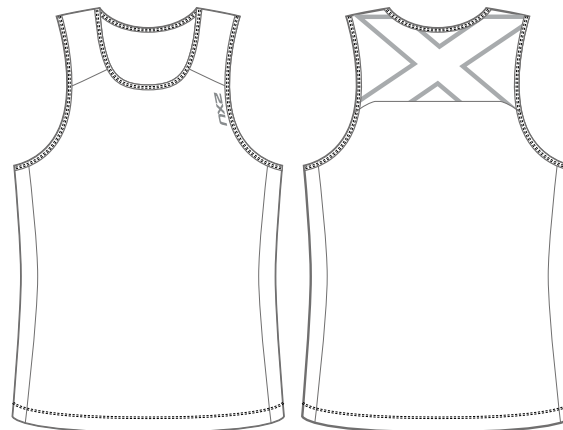
GARMENT FEATURES

01. Semi-fitted, active style tank.
02. Round neck line with neck bind.
03. Sleeveless with back yoke design.
04. Chafe-free flatlock seam construction.
05. X-device branding on the top back.
06. Designed to meet off-field needs.

FABRIC BENEFITS

01. Utilising 2XU's breakthrough moisture management technology to keep you drier through high-filament yarns and cooler through our advanced knit structure.
02. POLYGIENE® odour technology ensures you stay fresh and odour-free. Wear more, wash less and reduce your environmental footprint.

EMBELLISHMENT RECOMMENDATIONS



Levi is 188cm, 82kgs and wears a Medium

MEN'S BSR ACTIVE S/S TEE

MR4818A

COLOUR WAYS: BLACK, NAVY, WHITE

SIZE RANGE: 2XS - 5XL



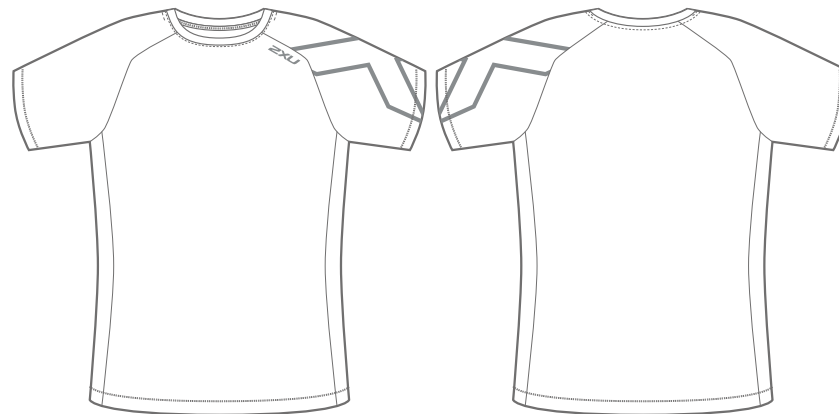
GARMENT FEATURES

01. Semi-fitted, active style tee.
02. Crew neckline with neck band and interior taping for comfort and durability.
03. Short sleeves with raglan design.
04. Chafe-free flatlock seam construction.
05. X-device branding on the left sleeve.
06. Designed to meet on and off-field needs.

FABRIC BENEFITS

01. Utilising 2XU's breakthrough moisture management technology to keep you drier through high-filament yarns and cooler through our advanced knit structure.
02. POLYGIENE® odour technology ensures you stay fresh and odour-free. Wear more, wash less and reduce your environmental footprint.

EMBELLISHMENT RECOMMENDATIONS



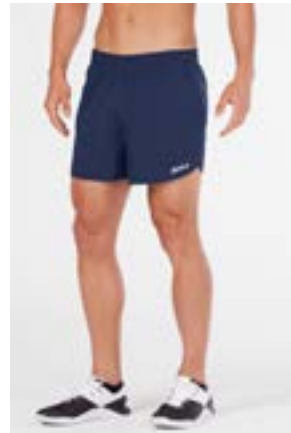
Levi is 188cm, 82kgs and wears a Medium

MEN'S BSR 4" RUN SHORT

MR4829B

COLOUR WAYS: BLACK, NAVY

SIZE RANGE: 2XS - 5XL



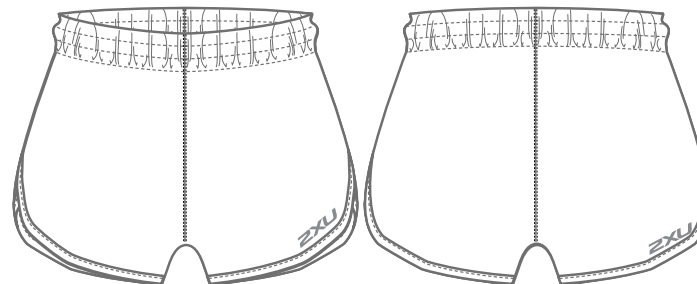
GARMENT FEATURES

01. 4-inch inseam length.
02. Anatomically shaped crossover hem, bound and raised at side seams to offer optimal range of movement.
03. 5cm width elasticated waistband with a hidden drawcord for a personalised and secure fit.
04. Internal stretch brief liner for comfort and an internal key pocket for convenient storage.
05. Designed to meet on-field needs.

FABRIC BENEFITS

01. Durable micro filament polyester yarns combined with an elastane component for unhindered movement.
02. Moisture wicking woven construction quickly removes sweat on contact with skin.
03. POLYGIENE® odour control technology, applied to the liner, ensures you stay fresh and odour free. Wear more, wash less and reduce your environmental footprint.
04. Zero cling against the body.

EMBELLISHMENT RECOMMENDATIONS



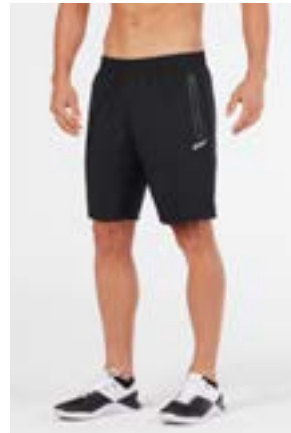
Levi is 188cm, 82kgs and wears a Medium

MEN'S BSR 9" PARADE SHORT

MR4827B

COLOUR WAYS: BLACK, NAVY

SIZE RANGE: 2XS - 5XL



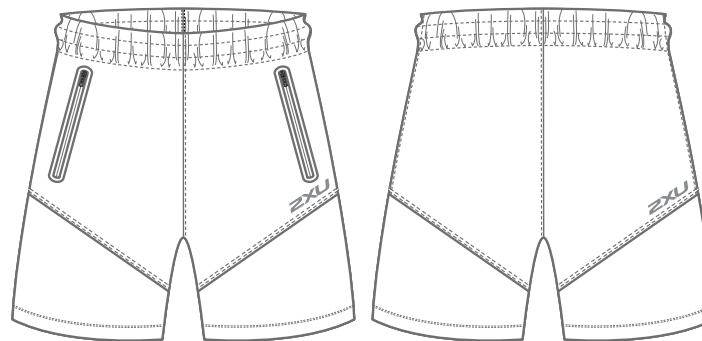
GARMENT FEATURES

01. 9-inch inseam length.
02. 5cm width elasticated waistband with a hidden drawcord for personalised and secure fit.
03. Internal stretch brief liner for comfort.
04. Side front zip pockets and internal key pocket for convenient storage.
05. Designed to meet on and off-field needs.

FABRIC BENEFITS

01. Durable micro filament polyester yarns combined with an elastane component for unhindered movement.
02. Moisture wicking woven construction quickly removes sweat on contact with skin.
03. POLYGIENE® odour control technology, applied to the liner, ensures you stay fresh and odour free. Wear more, wash less and reduce your environmental footprint.
04. Zero cling against the body.

EMBELLISHMENT RECOMMENDATIONS



Levi is 188cm, 82kgs and wears a Medium

MEN'S BSR TRACK JACKET

MR4823A

COLOUR WAYS: BLACK, NAVY

SIZE RANGE: 2XS - 5XL



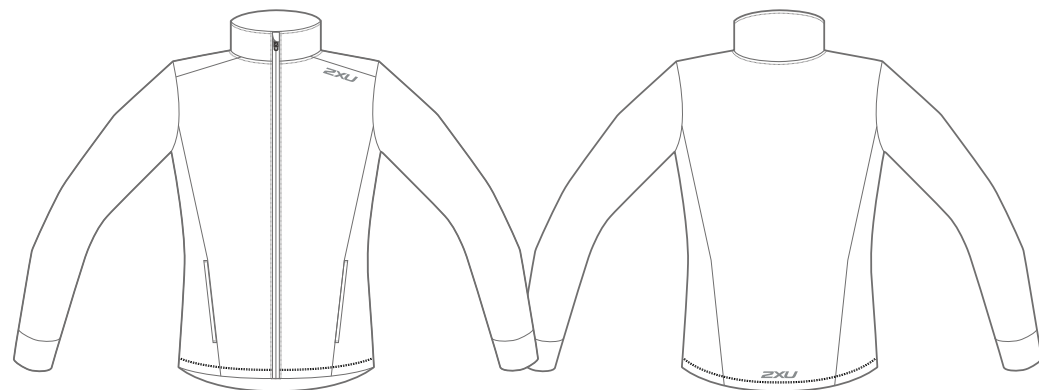
GARMENT FEATURES

01. Semi-fitted style with articulated back hem to provide extra coverage.
02. Stand-up collar for warmth and protection.
03. Full front zipper.
04. Side front zip pockets for convenient storage.
05. Chafe-free flatlock seam construction.
06. Designed to meet on and off-field needs.

FABRIC BENEFITS

01. A light-weight, french-terry backed, flexible, 3D mesh offers thermal regulation properties and optimal range of movement.
02. Moisture-wicking knit construction for essential moisture management.

EMBELLISHMENT RECOMMENDATIONS



Levi is 188cm, 82kgs and wears a Medium

MEN'S BSR TRACK PANT

MR4825B

COLOUR WAYS: BLACK, NAVY

SIZE RANGE: 2XS - 5XL



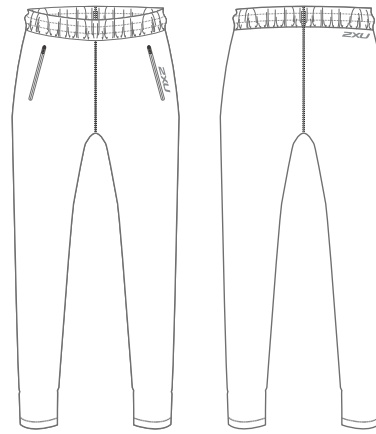
GARMENT FEATURES

01. Semi-fitted style with tapered leg.
02. 5cm width elasticated waistband with a hidden drawcord for personalised and secure fit.
03. Bonded side front zip pockets for convenient storage.
04. Designed to meet off-field needs.

FABRIC BENEFITS

01. A light-weight, french-terry backed, flexible, 3D mesh offers thermal regulation properties and optimal range of movement.
02. Moisture-wicking knit construction for essential moisture management.

EMBELLISHMENT RECOMMENDATIONS



Levi is 188cm, 82kgs and wears a Medium

MEN'S BSR MEMBRANE JACKET

MR4821A

COLOUR WAYS: BLACK, NAVY

SIZE RANGE: 2XS - 5XL



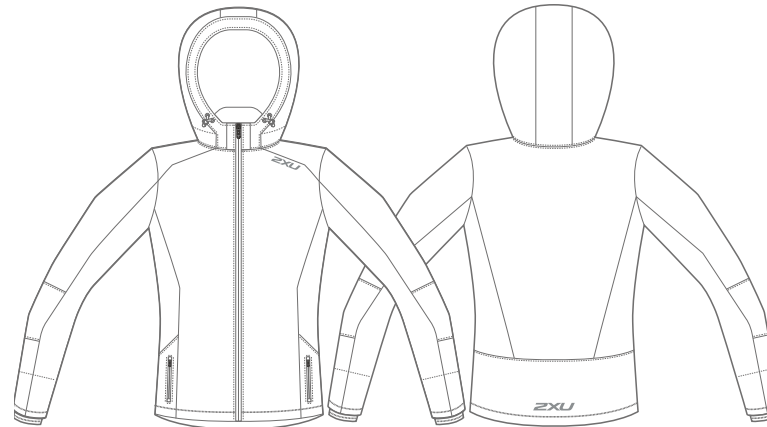
GARMENT FEATURES

01. Semi-fitted style with articulated back hem to provide extra coverage.
02. Hood boasts an integrated bungee cord for personalised coverage.
03. Detachable hood for a customised look.
04. High collar with an internal zip guard.
05. Full front waterproof zipper.
06. Side front waterproof zip pockets for convenient storage.

FABRIC BENEFITS

01. Utilising fully waterproof fabric, coupled with advanced moisture control to create the perfect micro climate, you stay warm and dry.
02. Soft internal cuff and collar for comfort and added insulation.
03. Fleece lined front pockets for softness and warmth next to skin.

EMBELLISHMENT RECOMMENDATIONS

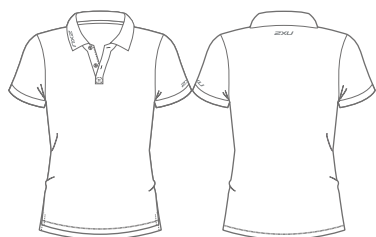




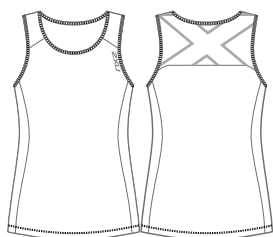
WOMEN'S

BSR COLLECTION

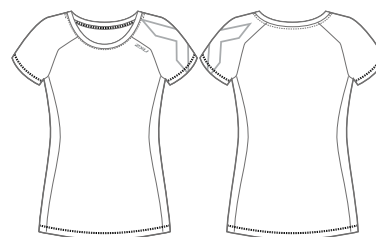
WOMEN'S BSR RUN COLLECTION



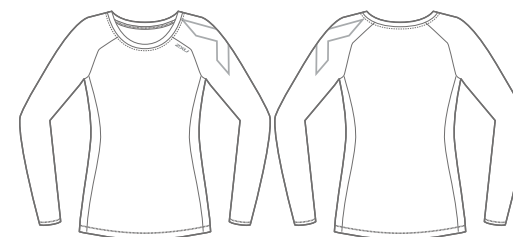
WR4897A
BSR Performance Polo



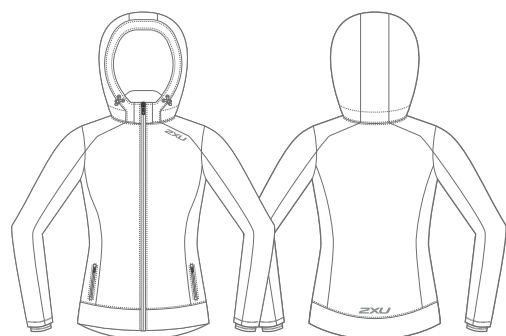
WR4817A
BSR Active Tank



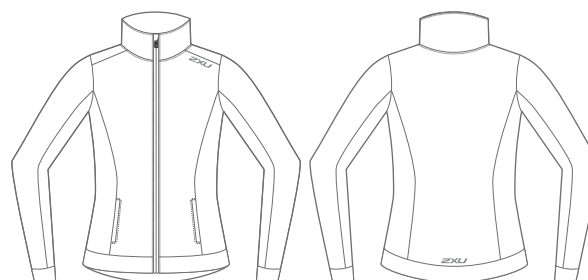
WR4816A
BSR Active S/S Tee



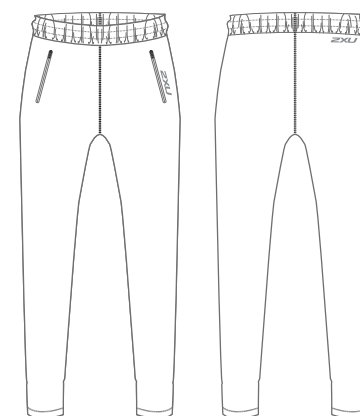
WR5159A
BSR Active L/S Shirt



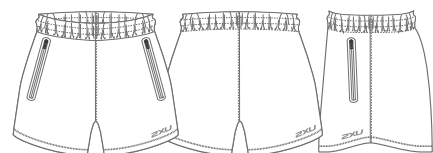
WR4820A
BSR Membrane Jacket



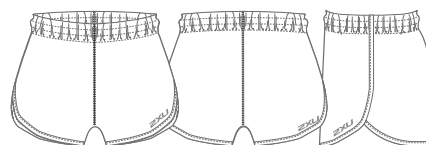
WR4822A
BSR Track Jacket



WR4824B
BSR Track Pant



WR4826B
BSR 5" Parade Short



WR4828B
BSR 3" Run Short



WOMEN'S BSR PERFORMANCE POLO

WR4897A

COLOUR WAYS: BLACK, NAVY, WHITE

SIZE RANGE: 2XS -4XL



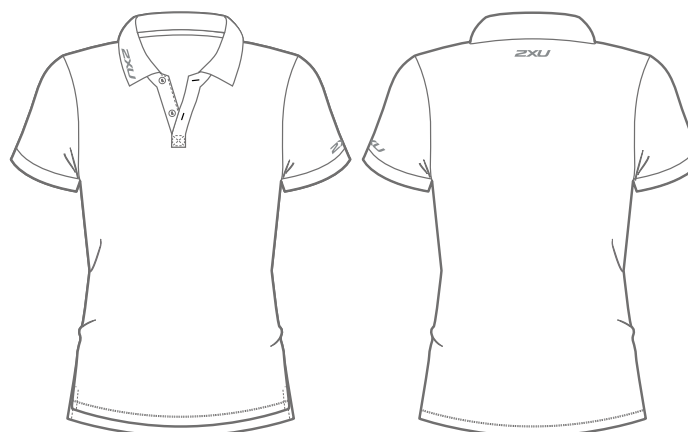
GARMENT FEATURES

01. Semi-fitted, classic style polo.
02. Self fabric collar with two-button placket.
03. Short sleeves with self fabric armbands.
04. Side vents with tennis tail at hem for full range of motion.
05. Chafe-free flatlock seam construction.
06. Traditional 2XU branding.
07. Designed to meet off-field needs.

FABRIC BENEFITS

01. Utilising 2XU's breakthrough moisture management technology to keep you drier through high-filament yarns and cooler through our advanced knit structure.
02. POLYGIENE® odour technology ensures you stay fresh and odour-free. Wear more, wash less and reduce your environmental footprint.

EMBELLISHMENT RECOMMENDATIONS



Hannah is 170cm, 60kgs and wears a Small

WOMEN'S BSR ACTIVE L/S SHIRT

WR5159A

COLOUR WAYS: BLACK, NAVY, WHITE

SIZE RANGE: 2XS -4XL



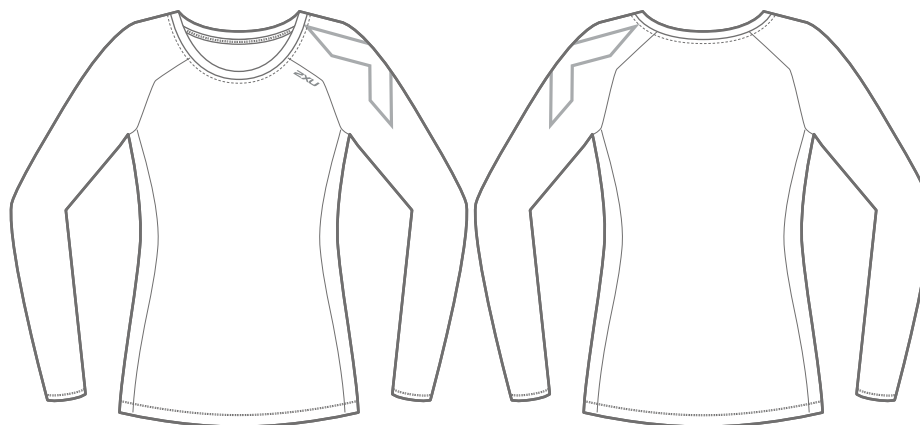
GARMENT FEATURES

01. Semi-fitted, active style tee.
02. Crew neckline with neck band and interior taping for comfort and durability.
03. Long sleeves with raglan design.
04. Chafe-free flatlock seam construction.
05. X-device branding on the left sleeve.
06. Designed to meet on and off-field needs.

FABRIC BENEFITS

01. Utilising 2XU's breakthrough moisture management technology to keep you drier through high-filament yarns and cooler through our advanced knit structure.
02. POLYGIENE® odour technology ensures you stay fresh and odour-free. Wear more, wash less and reduce your environmental footprint.

EMBELLISHMENT RECOMMENDATIONS



Hannah is 170cm, 60kgs and wears a Small

WOMEN'S BSR ACTIVE TANK

WR4817A

COLOUR WAYS: BLACK, NAVY, WHITE

SIZE RANGE: 2XS -4XL



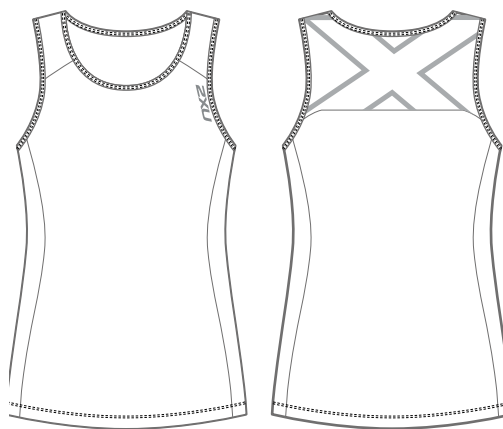
GARMENT FEATURES

01. Semi-fitted, active style tank.
02. Round neck line with neck bind.
03. Sleeveless with back yoke design.
04. Chafe-free flatlock seam construction.
05. X-device branding on the top back.
06. Designed to meet off-field needs.

FABRIC BENEFITS

01. Utilising 2XU's breakthrough moisture management technology to keep you drier through high-filament yarns and cooler through our advanced knit structure.
02. POLYGIENE® odour technology ensures you stay fresh and odour-free. Wear more, wash less and reduce your environmental footprint.

EMBELLISHMENT RECOMMENDATIONS



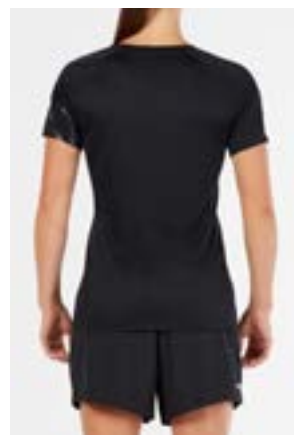
Hannah is 170cm, 60kgs and wears a Small

WOMEN'S BSR ACTIVE S/S TEE

WR4816A

COLOUR WAYS: BLACK, NAVY, WHITE

SIZE RANGE: 2XS -4XL



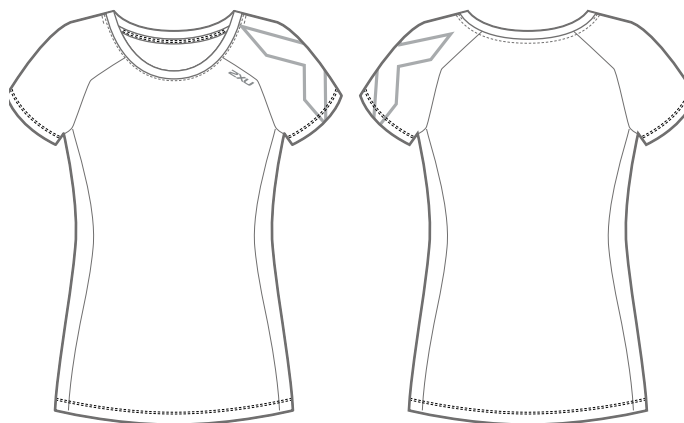
GARMENT FEATURES

01. Semi-fitted, active style tee.
02. Crew neckline with neck band and interior taping for comfort and durability.
03. Short sleeves with raglan design.
04. Chafe-free flatlock seam construction.
05. X-device branding on the left sleeve.
06. Designed to meet on and off-field needs.

FABRIC BENEFITS

01. Utilising 2XU's breakthrough moisture management technology to keep you drier through high-filament yarns and cooler through our advanced knit structure.
02. POLYGIENE® odour technology ensures you stay fresh and odour-free. Wear more, wash less and reduce your environmental footprint.

EMBELLISHMENT RECOMMENDATIONS



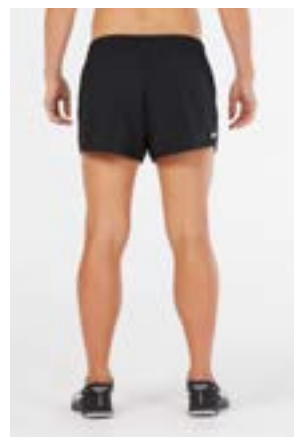
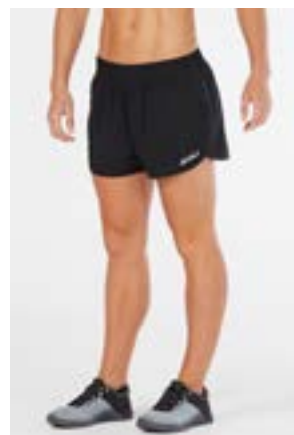
Hannah is 170cm, 60kgs and wears a Small

WOMEN'S BSR 3" RUN SHORT

WR4828B

COLOUR WAYS: BLACK, NAVY

SIZE RANGE: 2XS -4XL



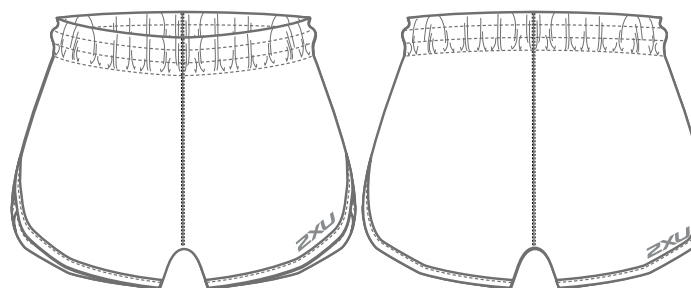
GARMENT FEATURES

01. 3-inch inseam length.
02. Anatomically shaped crossover hem, bound and raised at side seams to offer optimal range of movement.
03. 5cm width elasticated waistband with a hidden drawcord for a personalised and secure fit.
04. Internal stretch brief liner for comfort and an internal key pocket for convenient storage.
05. Designed to meet on-field needs.

FABRIC BENEFITS

01. Durable micro filament polyester yarns combined with an elastane component for unhindered movement.
02. Moisture wicking woven construction quickly removes sweat on contact with skin.
03. POLYGIENE® odour control technology, applied to the liner, ensures you stay fresh and odour free. Wear more, wash less and reduce your environmental footprint.
04. Zero cling against the body.

EMBELLISHMENT RECOMMENDATIONS



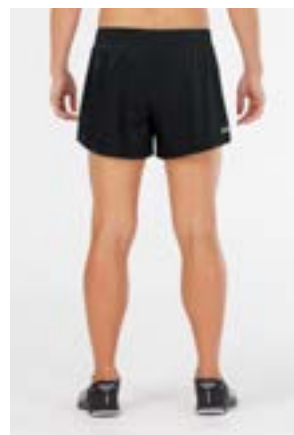
Hannah is 170cm, 60kgs and wears a Small

WOMEN'S BSR 5" PARADE SHORT

WR4826B

COLOUR WAYS: BLACK, NAVY

SIZE RANGE: 2XS -4XL



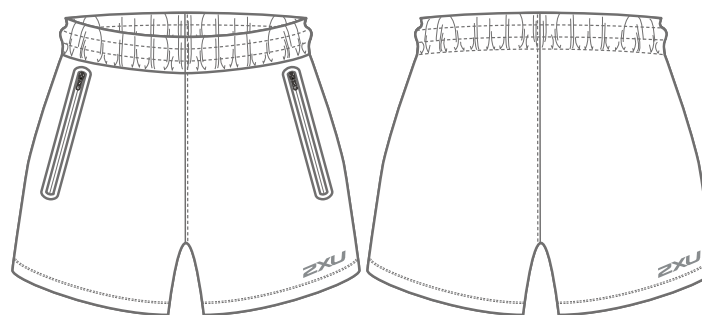
GARMENT FEATURES

01. 5-inch inseam length.
02. 5cm width elasticated waistband with a hidden drawcord for personalised and secure fit.
03. Internal stretch brief liner for comfort.
04. Side front zip pockets and internal key pocket for convenient storage.
05. Designed to meet on and off-field needs.

FABRIC BENEFITS

01. Durable micro filament polyester yarns combined with an elastane component for unhindered movement.
02. Moisture wicking woven construction quickly removes sweat on contact with skin.
03. POLYGIENE® odour control technology, applied to the liner, ensures you stay fresh and odour free. Wear more, wash less and reduce your environmental footprint.
04. Zero cling against the body.

EMBELLISHMENT RECOMMENDATIONS



Hannah is 170cm, 60kgs and wears a Small

WOMEN'S BSR TRACK JACKET

WR4822A

COLOUR WAYS: BLACK, NAVY

SIZE RANGE: 2XS -4XL



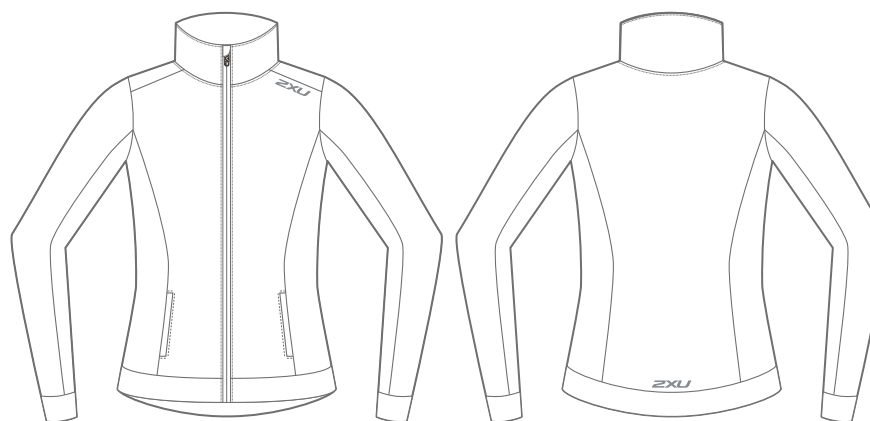
GARMENT FEATURES

01. Semi-fitted style with articulated back hem to provide extra coverage.
02. Stand-up collar for warmth and protection.
03. Full front zipper.
04. Side front zip pockets for convenient storage.
05. Chafe-free flatlock seam construction.
06. Designed to meet on and off-field needs.

FABRIC BENEFITS

01. A light-weight, french-terry backed, flexible, 3D mesh offers thermal regulation properties and optimal range of movement.
02. Moisture-wicking knit construction for essential moisture management.

EMBELLISHMENT RECOMMENDATIONS



Hannah is 170cm, 60kgs and wears a Small

WOMEN'S BSR TRACK PANT

WR4824B

COLOUR WAYS: BLACK, NAVY

SIZE RANGE: 2XS -4XL



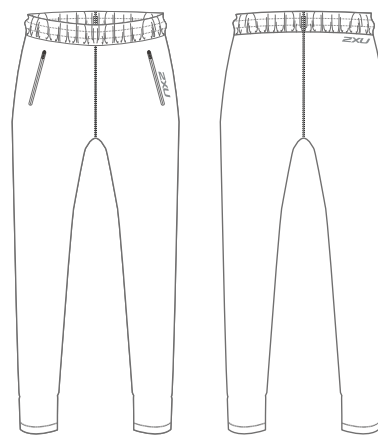
GARMENT FEATURES

01. Semi-fitted style with tapered leg.
02. 5cm width elasticated waistband with a hidden drawcord for personalised and secure fit.
03. Bonded side front zip pockets for convenient storage.
04. Designed to meet off-field needs.

FABRIC BENEFITS

01. A light-weight, french-terry backed, flexible, 3D mesh offers thermal regulation properties and optimal range of movement.
02. Moisture-wicking knit construction for essential moisture management.

EMBELLISHMENT RECOMMENDATIONS



Hannah is 170cm, 60kgs and wears a Small

WOMEN'S MEMBRANE JACKET

WR4820A

COLOUR WAYS: BLACK, NAVY

SIZE RANGE: 2XS -4XL



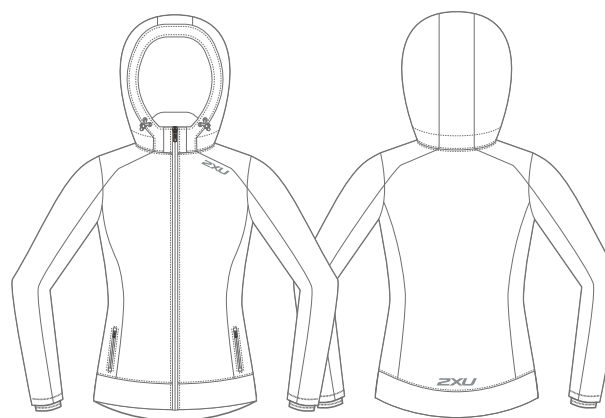
GARMENT FEATURES

01. Semi-fitted style with articulated back hem to provide extra coverage.
02. Hood boasts an integrated bungee cord for personalised coverage.
03. Detachable hood for a customised look.
04. High collar with an internal zip guard.
05. Full front waterproof zipper.
06. Side front waterproof zip pockets for convenient storage.

FABRIC BENEFITS

01. Utilising fully waterproof fabric, coupled with advanced moisture control to create the perfect micro climate, you stay warm and dry.
02. Soft internal cuff and collar for comfort and added insulation.
03. Fleece lined front pockets for softness and warmth next to skin.

EMBELLISHMENT RECOMMENDATIONS



Hannah is 170cm, 60kgs and wears a Small



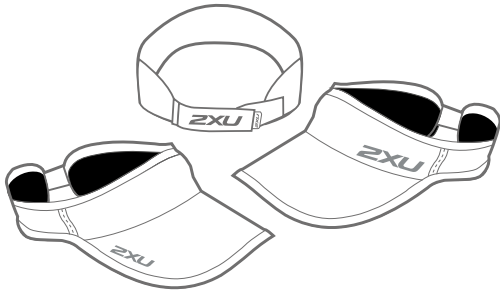
ESSENTIALS

BSR COLLECTION

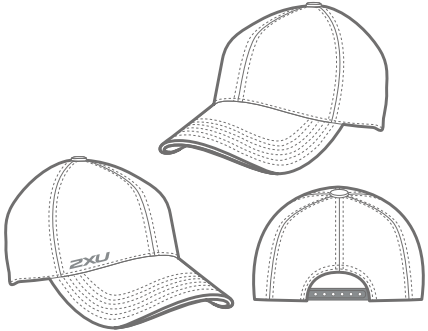
ESSENTIALS BSR COLLECTION



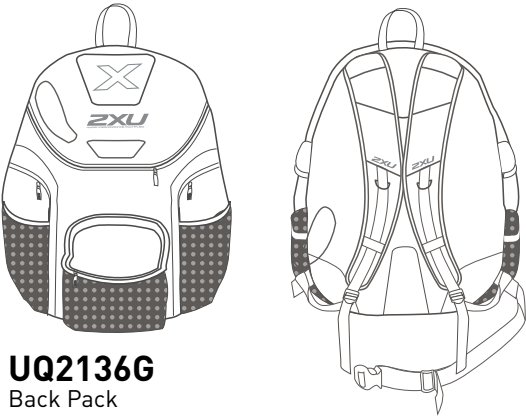
UR1188F
Run Cap



UA1150F
Run Visor



UQ4989G
Casual Cap



UQ2136G
Back Pack

UNISEX RUN CAP

UR1188F

COLOUR WAYS: BLACK, WHITE

SIZE RANGE: OSFA



GARMENT FEATURES

- 01. Six-panel, curved peak design.
- 02. Mesh panelling for ventilation.
- 03. Adjustable velcro strap closure to ensure a secure fit.
- 04. Soft internal elastic sweatband for lasting comfort.
- 05. Traditional 2XU branding.
- 06. Designed to meet on-field needs.

FABRIC BENEFITS

- 01. Durable light-weight woven structure for premium moisture management and breathability.

EMBELLISHMENT RECOMMENDATIONS



UNISEX RUN VISOR

UA1150F

COLOUR WAYS: BLACK, WHITE

SIZE RANGE: OSFA



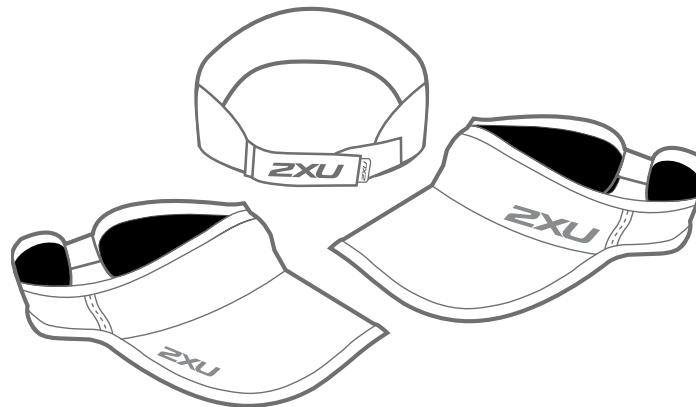
GARMENT FEATURES

01. Anatomic panelling, curved peak design for a performance fit.
02. Adjustable velcro strap closure to ensure a secure fit.
03. Soft internal elastic sweatband for lasting comfort.
04. Traditional 2XU branding.
05. Designed to meet on-field needs.

FABRIC BENEFITS

01. Durable light-weight woven structure for premium moisture management and breathability.

EMBELLISHMENT RECOMMENDATIONS



UNISEX CASUAL CAP

UQ4989G

COLOUR WAYS: BLACK

SIZE RANGE: OSFA



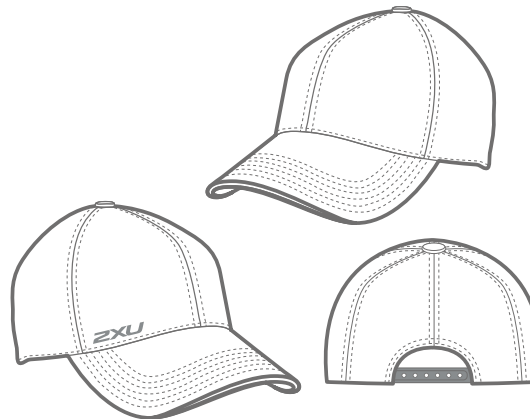
GARMENT FEATURES

01. Classic six-panel design.
02. Curved peak, providing adequate shade from the sun.
03. Lightweight and quick drying.
04. Snapback strap for a customised fit.
05. Designed to meet on and off-field needs.

FABRIC BENEFITS

01. High filament cross section yarns for the ultimate in moisture management and breathability.
02. Durable and lightweight mesh structure ensures quick dry and comfort.

EMBELLISHMENT RECOMMENDATIONS



UNISEX BACKPACK

UQ2136G

COLOUR WAYS: BLACK

SIZE RANGE: OSFA



GARMENT FEATURES

- 01. Ergonomic design with fully adjustable and padded straps for a customised fit.
- 02. Padded laptop pouch, easy access key storage and side storage for water bottles.
- 03. 20L capacity.

FABRIC BENEFITS

- 01. Highly durable shell outer offers water and abrasion resistance.
- 02. Internal padding zones for essential comfort.

EMBELLISHMENT RECOMMENDATIONS





SIZING CHARTS

BSR COLLECTION

BSR COLLECTION SIZING INFORMATION - MEN'S

MEN'S SIZING

MEASUREMENT (circumferences)		2XS	XS	S	M	L	XL	2XL	3XL	4XL	5XL
Chest	cm	83-87	88-92	93-97	98-102	103-107	108-112	113-117	118-122	123-127	123-127
	inches	32 ⁵ / ₈ -34 ¹ / ₄	34 ⁵ / ₈ -36 ¹ / ₄	36 ⁵ / ₈ -38 ¹ / ₄	38 ⁵ / ₈ -40 ¹ / ₈	40 ¹ / ₂ -42 ¹ / ₈	42 ¹ / ₂ -44 ¹ / ₈	44 ¹ / ₂ -46	46 ¹ / ₂ -48	48 ³ / ₈ -50	50 ³ / ₈ -52
Waist	cm	65-69	70-74	75-79	80-84	85-89	90-94	95-99	100-104	105-109	110-114
	inches	25 ¹ / ₂ -27 ¹ / ₈	27 ¹ / ₂ -29 ¹ / ₈	29 ¹ / ₂ -31 ¹ / ₈	31 ¹ / ₂ -33	33 ¹ / ₂ -35	35 ¹ / ₈ -37	37 ³ / ₈ -39	39 ³ / ₈ -41	41 ³ / ₈ -42 ⁷ / ₈	43 ³ / ₈ -44 ⁷ / ₈



Levi is 188cm, 82kgs and wears a Medium

BSR COLLECTION SIZING INFORMATION - WOMEN'S

WOMEN'S SIZING

MEASUREMENT (circumferences)		2XS	XS	S	M	L	XL	2XL	3XL	4XL
Bust	cm	78-82	83-87	88-92	93 - 97	98 -102	103-107	108-112	113-117	118-122
	inches	30 ³ / ₄ -32 ¹ / ₄	32 ⁵ / ₈ -34 ¹ / ₄	34 ⁵ / ₄ -36 ¹ / ₄	36 ⁵ / ₈ -38 ¹ / ₄	38 ⁵ / ₈ -40 ¹ / ₄	40 ¹ / ₂ -42 ¹ / ₈	42 ¹ / ₂ -44 ¹ / ₈	44 ¹ / ₂ -46	46 ¹ / ₄ -48
Waist	cm	58-62	63-67	68-72	73-77	78-82	83-87	88-92	93-97	98-102
	inches	22 ³ / ₈ -24 ³ / ₈	24 ³ / ₄ -26 ³ / ₈	26 ³ / ₄ -28 ³ / ₈	28 ³ / ₄ -30 ³ / ₈	30 ³ / ₄ -32 ¹ / ₄	32 ³ / ₄ -34 ¹ / ₄	34 ⁵ / ₈ -36 ¹ / ₄	36 ⁵ / ₈ -38 ¹ / ₄	38 ¹ / ₂ -45
Hip	cm	86-90	91-95	96-100	101-105	106-110	111-115	116-120	121-125	126-131
	inches	33 ⁷ / ₈ -35 ¹ / ₂	35 ⁷ / ₈ -37 ³ / ₈	37 ³ / ₄ -39 ³ / ₈	39 ³ / ₄ -41 ³ / ₈	41 ³ / ₄ -43 ³ / ₈	43 ³ / ₄ -54 ¹ / ₄	45 ⁵ / ₈ -47 ¹ / ₄	47 ⁵ / ₈ -49 ¹ / ₄	49 ¹ / ₂ -51 ¹ / ₂



Hannah is 170cm, 60kgs and wears a Small

The logo features the text '2XU' in a large, bold, italicized sans-serif font. Below it, the word 'CUSTOM' is written in a smaller, spaced-out, all-caps sans-serif font. The text is white and set against a dark grey horizontal bar.

2XU
C U S T O M