

BENCHTOP PRESS FOR RAVIN CROSSBOW

!!! WARNINGS !!!

HANDLE EVERYTHING WITH CARE. MAKE SURE TO TAKE YOUR TIME USING THE PRESS SO NOT TO DAMAGE YOUR CROSSBOW. ARCHERYDEZIGN LLC IS NOT RESPONSIBLE FOR ANY DAMAGE CAUSED BY MISHANDLING THE PRESS.

WE RECOMMEND THAT YOU FIRST COMPRESS THE PRESS JUST A NOTCH TO LEARN HOW IT WORKS.

ALWAYS PAY CLOSE ATTENTION TO CROSSBOW BEARING BLOCK POSITION ON THE PRESS BLOCK. PERFORM ALL OPERATIONS SLOWLY AND WITH CARE, MAKING SURE THE BEARING BLOCK WILL NOT SLIDE OFF THE PRESS BLOCK.

IF YOU SEE THE BEARING BLOCK GETTING REALLY CLOSE TO THE PRESS BLOCK SHORT EDGE STOP WHAT YOU DOING AND CONTACT US.

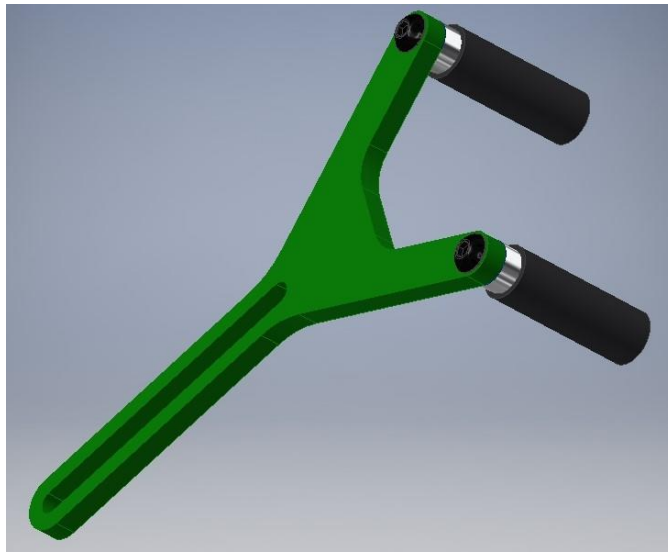
ALWAYS KEEP THE CROSSBOW SECURE WHILE USING OUR PRESS. ARCHERYDEZIGN LLC IS NOT RESPONSIBLE FOR DAMAGE CAUSED BY DROPPING THE CROSSBOW WITH PRESS MOUNTED IN IT, OR IF YOU ACCIDENTALLY BUMP THE PRESS AND CAUSE DAMAGE TO YOUR CROSSBOW.

THIS PRESS WORKS EXCELLENT IF YOU HANDLE IT CORRECTLY. NEVER MODIFY ANYTHING ON THE PRESS WITHOUT OUR APPROVAL FIRST.

THE PRESS ARRIVES IN PIECES TO SAVE YOU MONEY ON SHIPPING CHARGE. THIS WAY WE WERE ABLE TO FIT EVERYTHING IN THE SMALLEST BOX POSSIBLE.

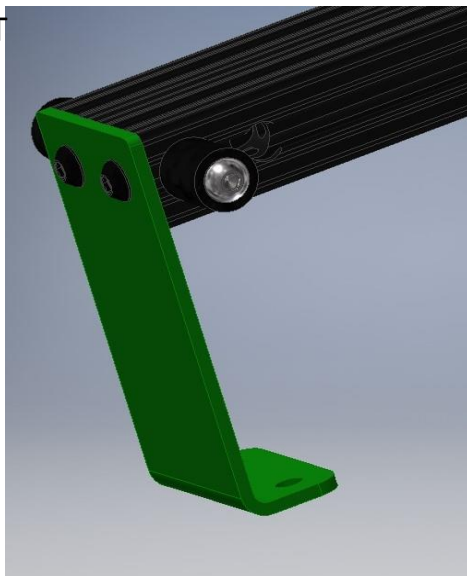
PRESS ASSEMBLY STEPS

REMOVE THE “Y” SHAPED BRACKET AND TWO SHORT ALUMINUM RODS WITH BLACK CAPS OVER THEM, OUT OF THE BOX. REMOVE TWO SCREWS FROM THE ALUMINUM RODS AND ATTACH THEM TO “Y” BRACKET. DOESN’T MATTER ON WHICH SIDE

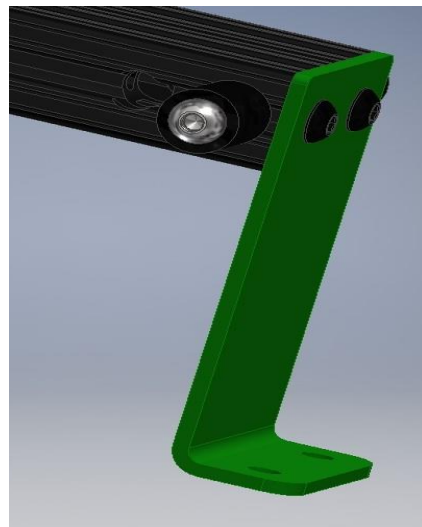


NEXT TAKE THE PRESS MAIN BODY ASSEMBLY AND REVERSE “L” SHAPED MOUNTING BRACKET SO THE SCREW FLANGE FACES OUTWARD

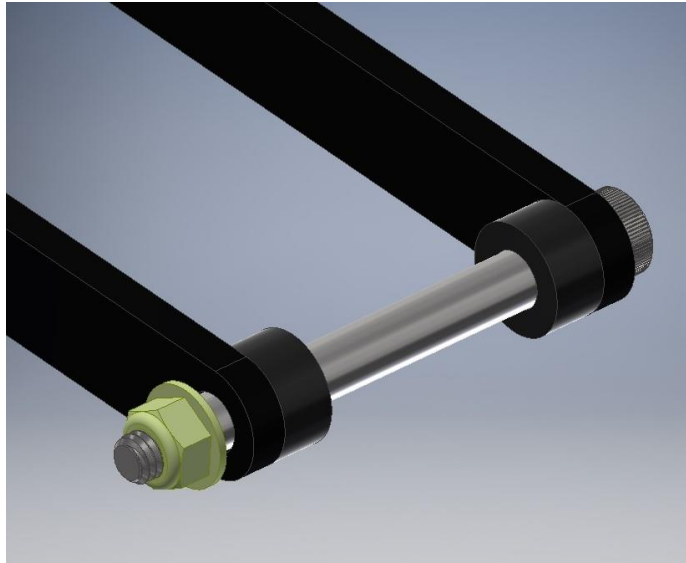
INCORRECT



CORRECT



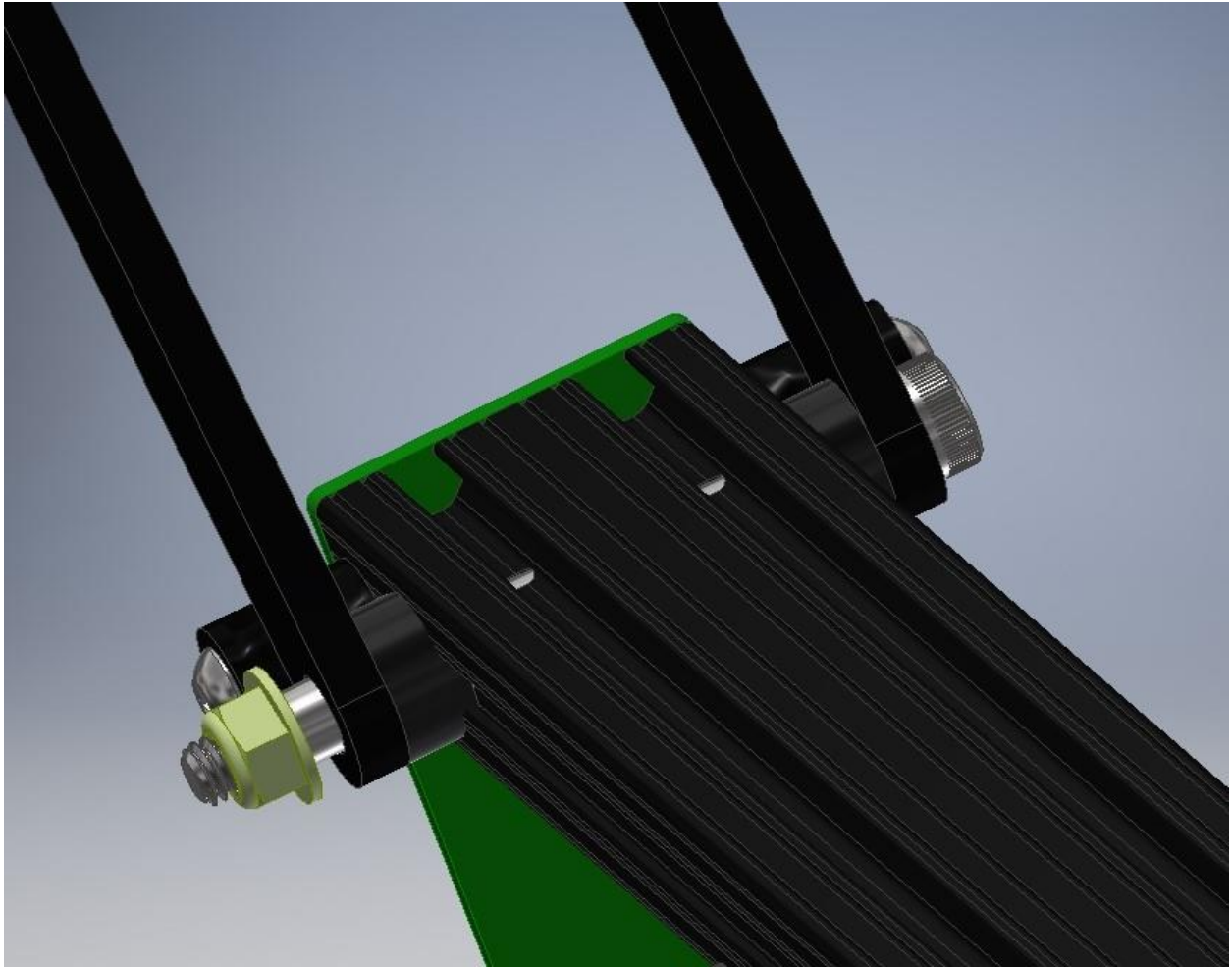
NEXT TAKE EITHER SIDE OF ARM ASSEMBLY AND ATTACH IT TO THE PRESS MAIN BODY BY REMOVING THE LONG BOLT AND TWO BLACK PLASTIC SPACERS.



SINCE I'M RIGHT-HANDED, I WILL ATTACH THE ARMS AND ROD ASSEMBLY ON THE LEFT SIDE OF PRESS.

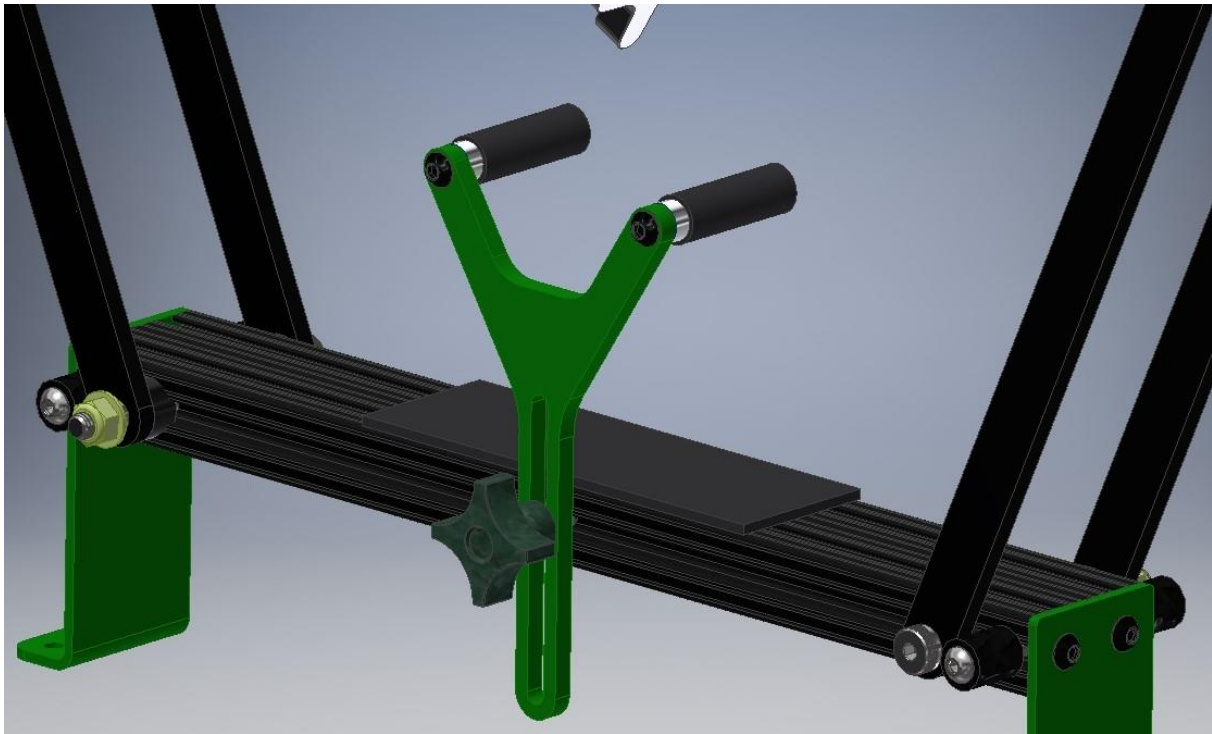


ASSEMBLY DETAIL



NEXT ATTACH OTHER ARMS ASSEMBLY ON OPPOSITE END

REMOVE GREEN KNOB AND ATTACH “Y” SHAPED BRACKET TO THE
PRESS



PRESS FULLY ASSEMBLED



ATTACH THE PRESS TO SOLID PIECE OF WOOD OR TOP OF YOUR BENCH
SO IT WILL NOT TIP OVER WHEN USED.

HOW TO USE THE PRESS

FULLY RAISE THE “Y” BRACKET AND PLACE RAVIN ON THE PRESS
MAKING SURE IT’S CENTERED ON THE RUBBER PAD. NEXT SECURE
CROSSBOW BY LOWERING THE BRACKET AND TIGHTEN GREEN KNOB



NOW DEPENDS ON WHICH MODEL OF RAVIN YOU HAVE YOU MIGHT HAVE TO REMOVE THE STEEL 4 ARM KNOB OFF THE THREADED ROD TO PASS IT UNDER THE SCOPE RAIL AND THREAD IT TO THE OTHER SIDE OF PRESS (SEE IMAGE BELOW)

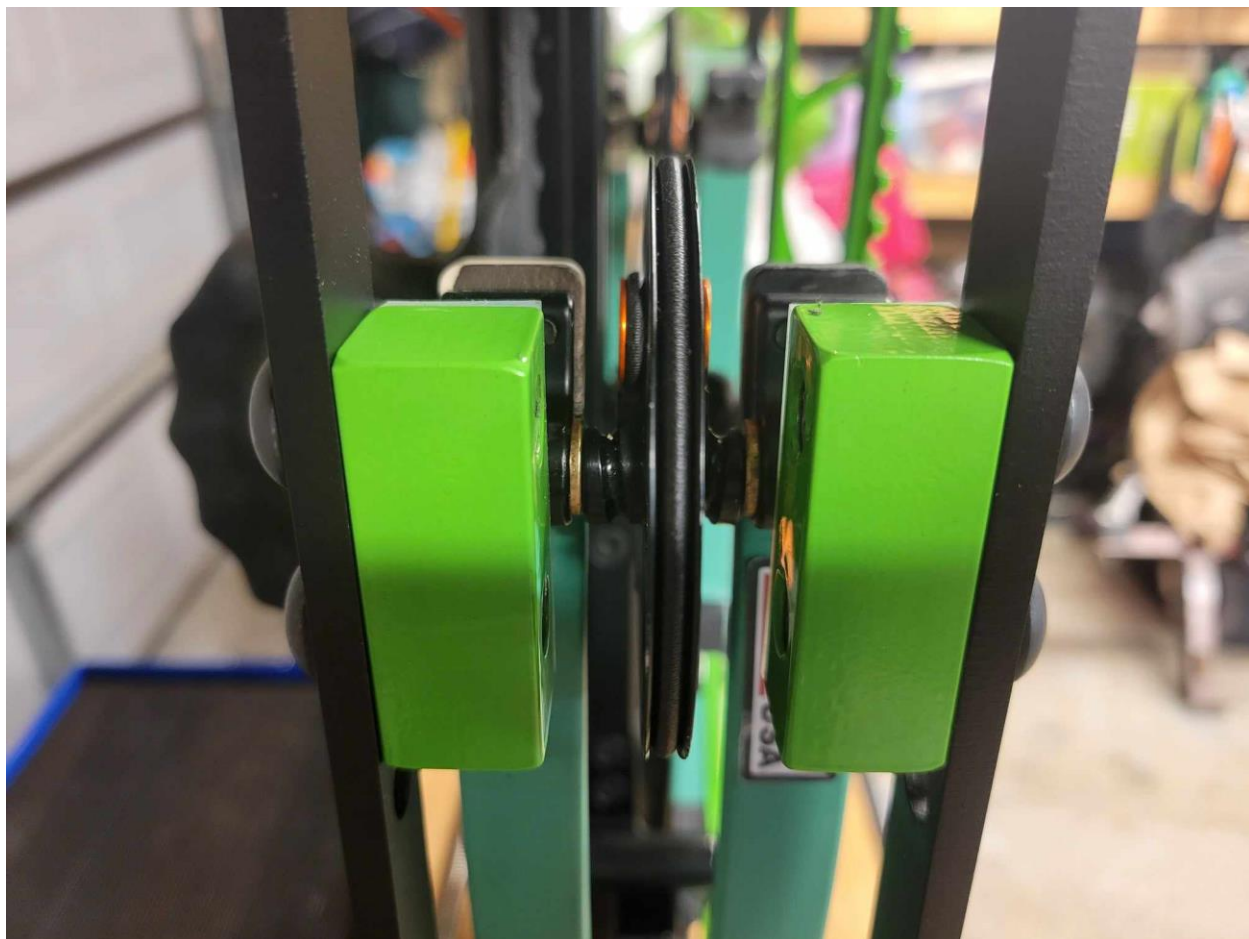


BE CAREFULL NOT TO DROP THE ROD ON YOUR CAMS.

REATTACH THE 4 ARM STEEL KNOB

TURN THE KNOB UNTIL BOTH SIDES OF PRESS ARMS JUST TOUCH THE CAM BLOCKS. NEXT REALIGN THEM SO THE CAM BLOCKS ARE EQUALLY SUPPORTED BY PRESS BLOCKS

(SEE NEXT PHOTO)



NOW YOU CAN SLOWLY TURN THE KNOB TO PRESS THE LIMBS. PRESS IT TILL THERE IS ENOUGH SLACK IN STRING AND CABLES THAT YOU WILL BE ABLE TO REMOVE THEM.

IF YOU HAVE ANY QUESTIONS CONTACT ME AT

INFO@ARCHERYDEZIGN.COM