

SNMP Accessories For Minuteman UPSs

Select Minuteman UPS products are capable of accepting Simple Network Management Protocol (SNMP) communications cards. SNMP is a communications protocol for devices to a Local Area Network (LAN). It can be used to obtain the status of a UPS connected to the network and issue commands to it.

SNMP Capable UPSs

Minuteman UPS product lines which offer optional SNMP communications capability include:

- Endeavor 6 & 10kVA tower
- Endeavor 6kVA rack
- Endeavor 1-3kVA rack/tower
- CPE 1-3kVA
- EnterprisePlus 750VA-3kVA
- PRO-RT 1000-1500VA
- Encompass LCD and Encompass Rack/Tower

Features

SNMP option cards provide IT/Network administrators with a comprehensive set of features to manage and monitor UPSs over the LAN:

- **Connect the UPS directly to a LAN** - utilizing a standard RJ45 Ethernet connection; requires no special application software
- **Network UPS management** - monitor and manage the UPS over any computer attached to the network
- **Integrate UPS into Network Management System (NMS)** - using the included MIB (Management Information Base) agent or the included SNMP management software
- **Schedule events** - shutdown or restart connected equipment daily, weekly, or monthly using the integrated scheduler
- **Track utility problems via Event Logs** - to provide history of power events on the UPS including: power quality, equipment draw, and blackouts.
- **Multiple server shutdown** - using the included SNMP management software allows the UPS to shutdown multiple devices sequentially when a power event occurs
- **Event Notification** - notify multiple IT personnel via SNMP traps or e-mail when a power event occurs
- **Telnet Support** - for flexible configuration of the SNMP card

Card Installation

All compatible Minuteman UPSs feature an SNMP option slot at the rear of the unit. *SNMP Option Slot*



E2000RM2U UPS

Browser-based Management Cards

Multiple options are available to meet the needs of a variety of network requirements. Cards include:

SNMP-NV6 **NEW!**

IPv4/IPv6 compliant; compatible with Endeavor 1-3kVA, Endeavor 6&10kVA, EnterprisePlus, & PRO-RT UPSs. New features include:



- Full compatibility with both **IPv4 and IPv6** standards making it the perfect card for future migration options
- Compatible with **SNMPv1, v2C, and v3** protocols
- Supports **SYSLOG**; send messages to a maximum of four Syslog servers when an event occurs
- Supports **RADIUS Login** application
- User Configurable **Event Alarm** levels
- Adjustable **Low Battery** warning alarm
- Batch **Configurations and Upgrades**

SNMP-NET

Base SNMP card compatible with Endeavor 1-3kVA, Endeavor 6&10kVA, EnterprisePlus, & PRO-RT UPSs



SNMP-SSL

SNMP-NET card with SSL security features compatible with Endeavor 1-3kVA, Endeavor 6&10kVA, EnterprisePlus, & PRO-RT UPSs. Security Features include:



- Supports **SSL, SSH, HTTPs, and SNMPv3** security protocols
- Supports **RADIUS Login** Application

NetAgent SNMP

SNMP management compatible with CPE Series UPSs.

Monitoring Accessories

Multiple accessories are available to provide administrators with a complete monitoring solution for networks.

- **ENV Probe** - temperature and humidity monitoring module for SNMP-NET and NV6 cards
- **SSL Detection Modules:**
SSL-EMD (temp/humidity), SSL-SMOKE, SSL-WATER, SSL-VIBRATION, SSL-DOOR



ENV PROBE



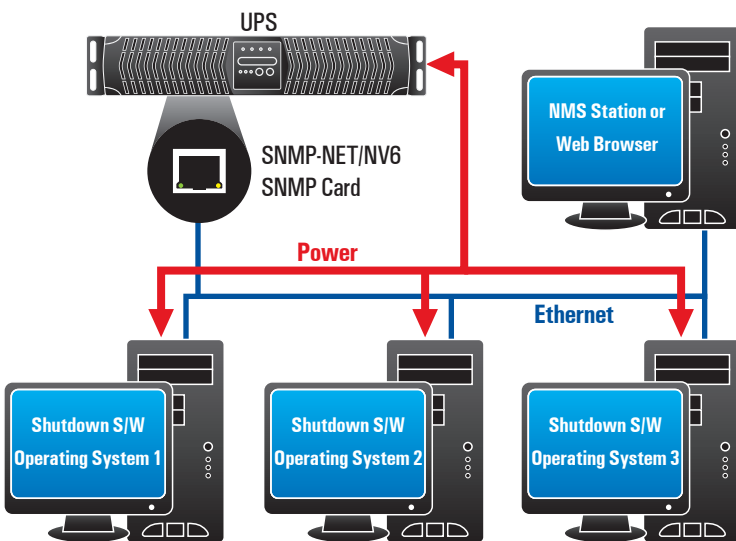
SSL-EMD

SNMP Card Specifications

Model	SNMP-NV6	SNMP-NET
Network Connection	RJ-45 Jack Connection	
Operating Temperature	0 ~ 40° C	
Operating Humidity	10 ~ 80 %	
Power Input	9 ~ 24V DC	
Power Consumption	2 Watt Maximum	1 Watt Maximum
Size	130 mm x 60 mm (L x W)	
Weight	75g	58g

Model	SNMP-SSL
CPU	16-bits AC1105 Fast Ethernet RISC Processor Phoenix Kernel
Memory	2MB (1Mbit x16) TFBGA Flash ROM 2MB (1Mbit x16) SDRAM
Serial Communication	Two UART Channels, one RJ-45, one Gold finger.
LAN Controller	10/100 Mbits Ethernet controller
Network Connection	10/100 TX RJ-45 jack connector
RTC	Real time clock
Network Protocol	SNMP over UDP/IP / HTTP over TCP/IP ARP, TFTP, SSH, SSL, NTP and ICMP
Supported MIB	UPS MIB (RFC1628) / SNMP-SSL MIB
Operating Temperature	0 ~ 40° C
Operating Humidity	10 ~ 80 %
Power Input	8-15V DC
Power Consumption	3.0 Watts Maximum
Size (L x W x H)	5.1 x 2.4 x 0.7 inches / 130 x 60 x 18.2 mm
Weight	0.2 lbs / 0.09 Kgs
Regulatory Compliance	FCC class B / CE class B

System Application Diagram

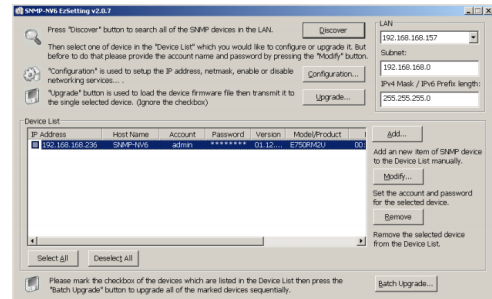


Minuteman SNMP cards are an interface between the UPS and the network. Cards can communicate the status of a UPS and issue commands to it. All Minuteman SNMP cards support SNMP and HTTP protocols for user access. Through the SNMP NMS and/or Web Browser, users can monitor the UPS status, issue commands, and set up the SNMP card through the network.

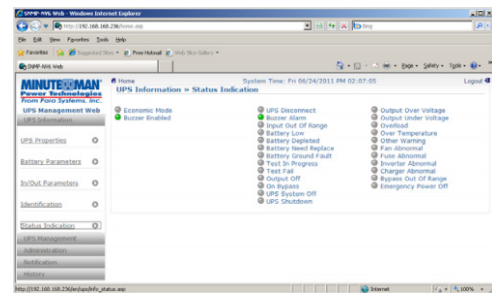
ENV Probe Specifications

Model	ENV Probe
Size (L x W x H)	2.6" x 2.0" x 1.4"
Weight Net	0.50 lbs
Temperature Measurement	0 ~ 65° C 32 ~ 149° F
Humidity Measurement	20 ~ 90 %
Power Input	12V DC
Power Consumption	400 mw

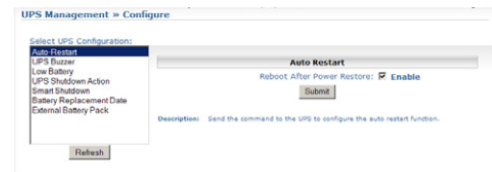
SNMP-NET/NV6 Interface



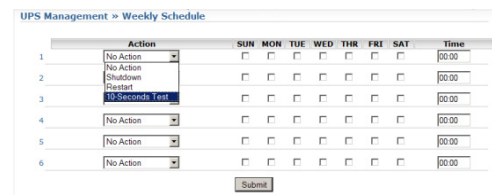
EZSetting configuration screen (NV6 & NET)



Web-based status screen (NV6)

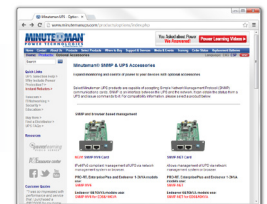


UPS/SNMP configuration screen (NV6)



Schedule actions (shutdown, restart, or 10-second test) to happen weekly (NV6)

For a full breakdown of features for each SNMP accessory, visit www.minutemanups.com/snmp



© Copyright 2013, Para Systems, Inc. Product specifications are subject to change without notice. Minuteman and Minuteman Platinum Protection Plan are registered trademarks of Para Systems, Inc.

PN-34000420 - 09-20



Para Systems, Inc. | Minuteman Power Technologies
1455 LeMay Drive | Carrollton, Texas 75007 | 972.446.7363 | 800.238.7272
www.minutemanups.com | www.sizemyups.com