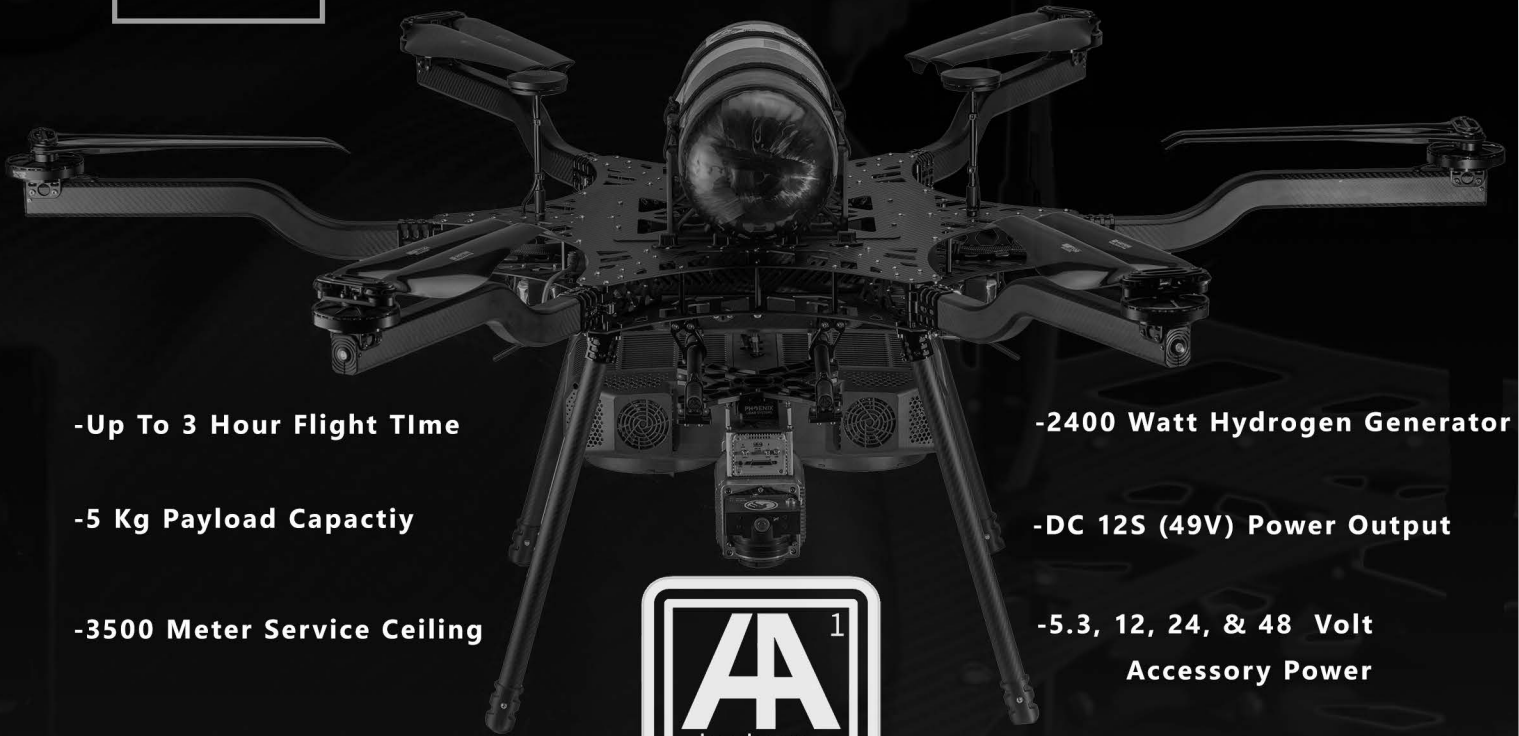




HARRIS AERIAL



-Up To 3 Hour Flight Time

-5 Kg Payload Capacity

-3500 Meter Service Ceiling

-2400 Watt Hydrogen Generator

-DC 12S (49V) Power Output

-5.3, 12, 24, & 48 Volt
Accessory Power



Carrier H6 Hydrone

* Phoenix LIDAR Optional

The Harris Aerial Carrier H6 Hydrone demonstrates an elemental shift in long endurance multirotor power systems. Users are now able to benefit from the flight times of our hybrid systems while maintaining the quiet operation of our electric systems, opening up areas of operation that were previously noise-restricted without sacrificing flight time. Hydrone changes the rules.



HSE

GCS Options

Harris C-GCS

- HOTAS Layout
- 12 Channel Functionality
- Sunlight Viewable Display
- 2-AXIS Payload & Gimbal Controls
- 6-POS/3-POS/2-POS/Guarded/
Button/Rotary
- NDAA Compliant

www.hse-uav.com



HereLinkBlue

- Handheld
- Touchscreen
- HD Real-Time Video
- Low Latency
- NDAA Compliant

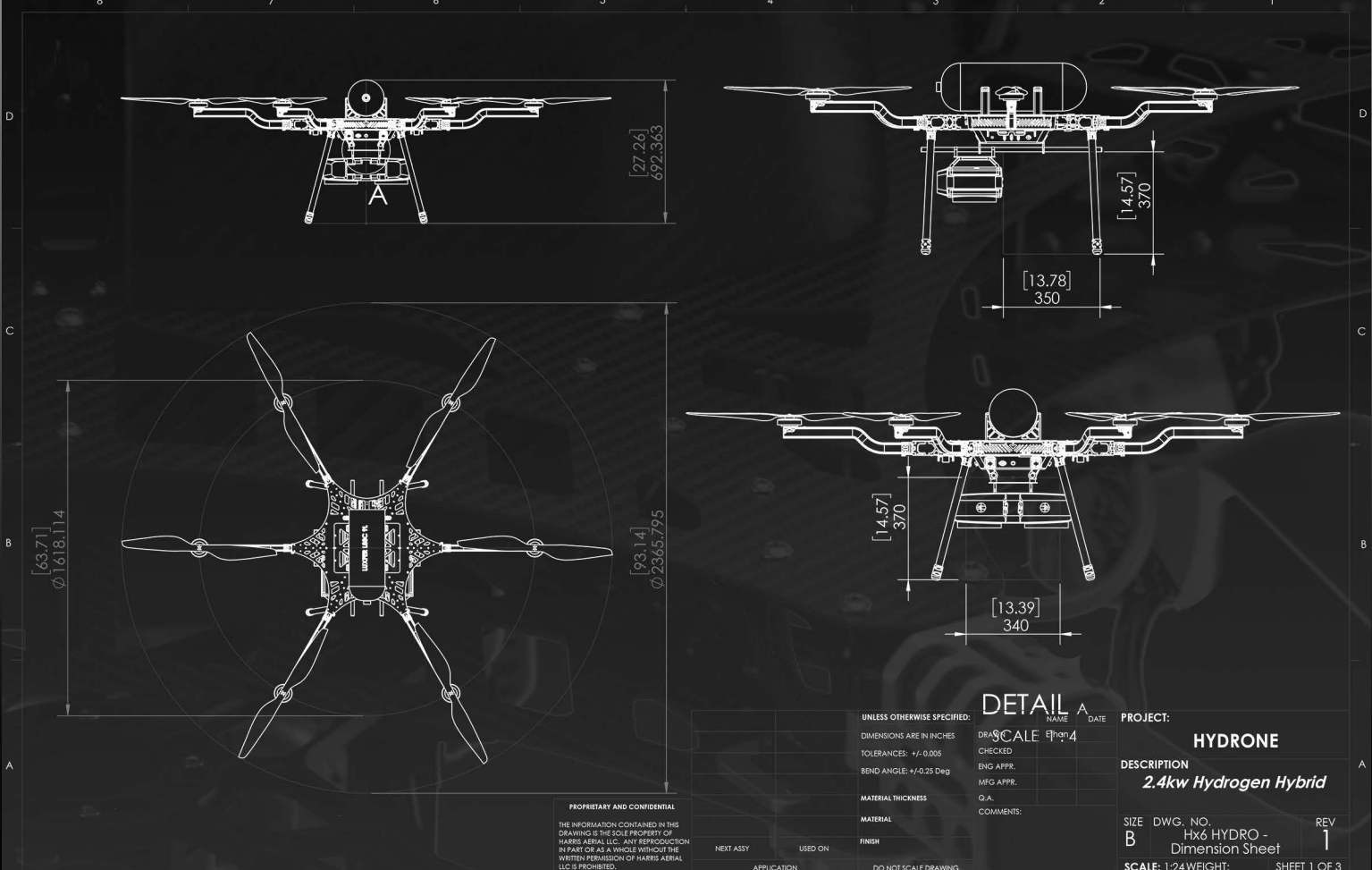
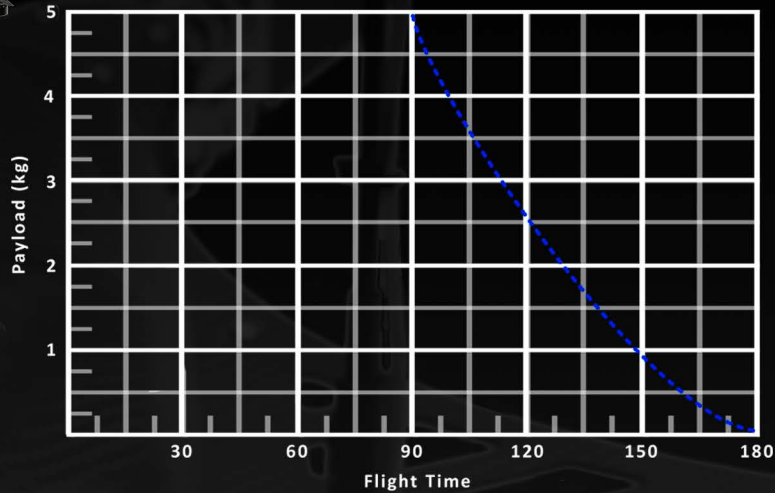
Contact us:
309-361-7656



HARRIS AERIAL

Carrier H6 Hydron

* Phoenix LIDAR Optional



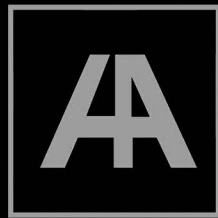
PROPRIETARY AND CONFIDENTIAL
 THE INFORMATION CONTAINED IN THIS DRAWING IS THE SOLE PROPERTY OF HARRIS AERIAL LLC. ANY REPRODUCTION IN PART OR AS A WHOLE WITHOUT THE WRITTEN PERMISSION OF HARRIS AERIAL LLC IS PROHIBITED.

| | | | | | |
|-----------------------------|---------|--------------------------|----------------------|-----------------------|--------------|
| UNLESS OTHERWISE SPECIFIED: | | DETAIL NAME DATE | | PROJECT: | |
| DIMENSIONS ARE IN INCHES | | DRAWN SCALE 1/4" = 1'-0" | | HYDRONE | |
| TOLERANCES: +/- 0.005 | | CHECKED | | DESCRIPTION | |
| BEND ANGLE: +/- 0.25 Deg | | ENG APPR. | | 2.4kw Hydrogen Hybrid | |
| MATERIAL THICKNESS | | MFG APPR. | | SIZE DWG. NO. | |
| MATERIAL | | G.A. | | B Hx6 HYDRO - | |
| FINISH | | COMMENTS: | | Dimension Sheet | |
| NEXT ASSY | USED ON | APPLICATION | DO NOT SCALE DRAWING | SCALE: 1:24 WEIGHT: | SHEET 1 OF 3 |



www.hse-uav.com

Contact us:
309-361-7656



HARRIS AERIAL



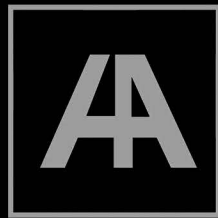
Carrier H6 Hydrone

| General | | | |
|-------------------------|---|-----------------------|---|
| Maximum Takeoff Weight | 55.0lb 25kg | Flight modes | - GPS LOITER - ALTITUDE HOLD - FULLY AUTONOMOUS |
| Empty Weight | 32.0lb 14.5kg | Radio Frequencies | 2.4 GHz (ISM) 902-928 MHz |
| Max payload | 11.0lb 5.0kg | System Architecture | Open Source |
| Flight Time | Up to 180 min. (No Payload) | GPS | Dual RTK GNSS |
| Max Speed | 33.6 mph 15 m/s | Payload Mounting | Dampened Modular Quick-Release |
| Max Vertical Speed | 5.6 mph 2.5 m/s | Weather Rating | Light Rain |
| Max Lean Angle | 30 degrees | Flight Safety Systems | - Radio Connectivity Monitoring - Backup Battery Redundancy (5 mins) - Backup Battery Voltage & Amperage Monitoring |
| Dimensions (unfolded) | - Prop Tip to Tip: 2363.4mm - Landing Gear Base: Length: 614.7mm Width: 654.1mm | Dimensions (folded) | - Length: 725mm - Width: 780mm - Height (Customizable): 692mm |
| Powerplant | | | |
| Generator | IE SOAR Fuel Cell Power Module (FCPM) | Refueling Equipment | Pneumatic-Driven Gas Boosters |
| Max Continuous Power | 2.4kW | Fuel Cell | 10.8L 350bar (Anti-Spark) Cylinder |
| Max Instantaneous Power | 8.0 kW | Fuel Type | Hydrogen Gas (H ₂) |
| Auxiliary Power | 5.3V, 12V, 24V, 48V Power Ports | Safety Features | - Dual redundant FCPM power system - Hydrogen Gas % Monitoring - FCPM Health Monitoring |



www.hse-uav.com

Contact us:
309-361-7656



HARRIS AERIAL



Carrier H6 Hydrone

| Operation and Environmental | | | |
|-----------------------------|--|----------------------|--|
| Operation Temp | -5°C to 40°C 23°F to 104°F | Service Ceiling AMSL | 6561ft 2000m (Payload Dependent) |
| Max Operational Wind Speed | 25 mph 11 m/s | Service Ceiling AGL | 400ft 122m (FAA Limited) |
| Motors and Propellers | | | |
| # Motors | 6 | Motor Configuration | HEXA X |
| Equivalent KV | KV100 Motors | Propeller Material | Carbon Fiber with Aluminum Hub |
| Optimal RPM | 2,200-2,800 RPM | Dimensions | 29.2in x 9.2in |
| Command and Control | | | |
| Harris C-GCS | - 19in Dual HD Display - Hands-on Throttle-and-Stick (HOTAS) - Freq: 902-928 MHz - 12 Channel Functionality | hereLink | - Handheld Remote - 5.5in Display - Freq: 2.4 GHz (ISM) - 32 Channels Functionality |
| Flight Controller | | | |
| Flight Controller | Cube Orange | Takeoff and Landing | Autonomous or Manual Control |
| Data Transmission Range | 12.5mi 20.0km (Ideal Conditions) | Flight Tracking | ADS-B (Receiver) |
| Firmware | Custom ArduPilot | Safety Features | - Triple Redundant IMU - Redundant Power Supply |
| Battery | | | |
| Battery Type | 6s2p LiPo (2x Batteries) | Battery Capacity | 4,750 mAh |
| Peak Battery Voltage | 50.4V | Battery Life Cycle | 250 Flights |
| Nominal Battery Voltage | 44.4V | Battery Connector | XT90-S (Anti-Spark) |



www.hse-uav.com

Contact us:
309-361-7656