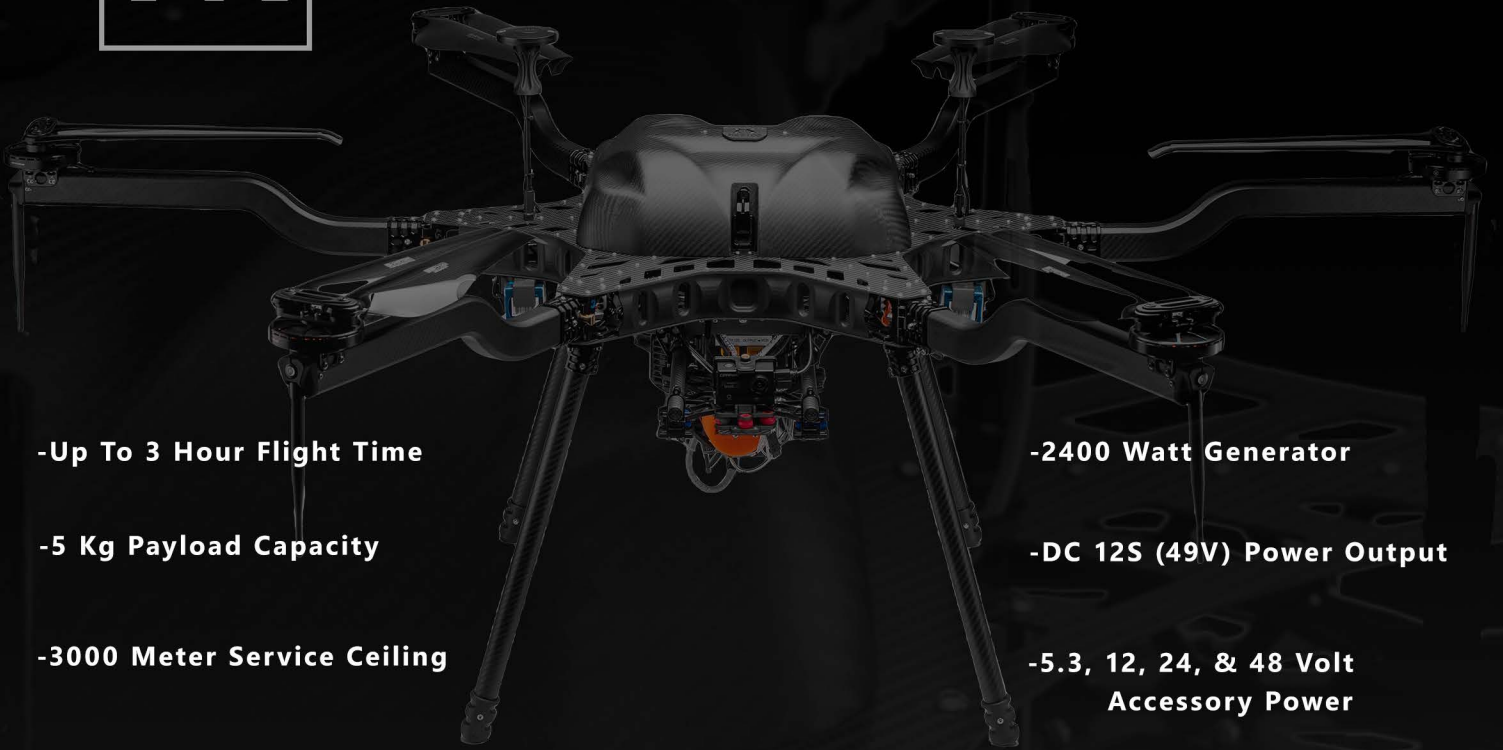




HARRIS AERIAL



-Up To 3 Hour Flight Time

-5 Kg Payload Capacity

-3000 Meter Service Ceiling

-2400 Watt Generator

-DC 12S (49V) Power Output

**-5.3, 12, 24, & 48 Volt
Accessory Power**

Carrier H6 Hybrid EFI

The Harris Aerial Carrier H6 EFI Hybrid provides a unique platform with exceptional stability and endurance. Our mechanical engineers are in-house at our Florida facility with a fully-equipped machine shop. This allows us to prototype, test, validate, and bring to market enhancements at a pace and with a level of reliability that is unmatched in the market.

GCS Options

As our Carrier models cater to different needs so do our GCS solutions. We have added the convenience of a HereLink system to our offerings. Whether your needs dictate the use of a rugged GCS or something more portable we have you covered.



HSE

Harris C-GCS

HOTAS Layout
12 Channel Functionality
Sunlight Viewable Display
2-AXIS Payload & Gimbal Controls
**6-POS/3-POS/2-POS/Guarded/
Button/Rotary**
NDAA Compliant

www.hse-uav.com



hereLink

Handheld
Touchscreen
HD Real-Time Video
Low Latency
NDAA Compliant

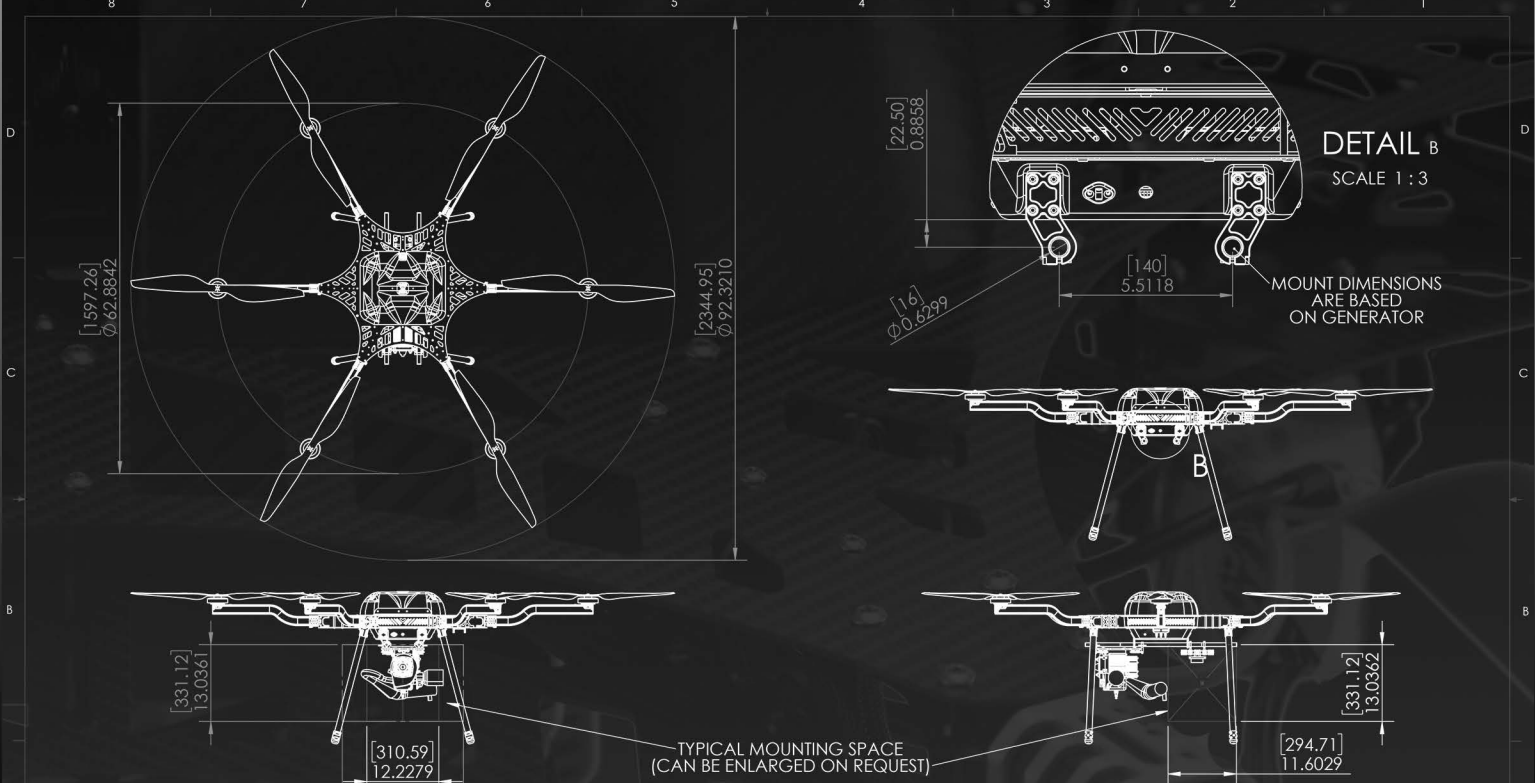
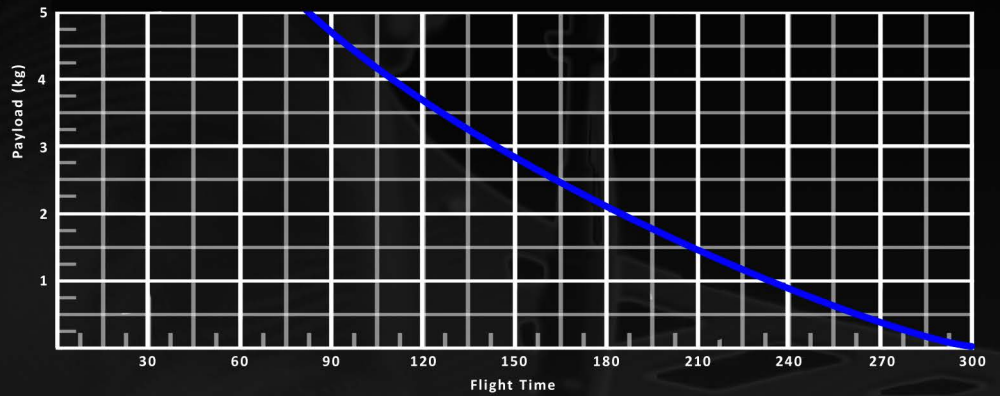
Contact us:
309-361-7656



HARRIS AERIAL

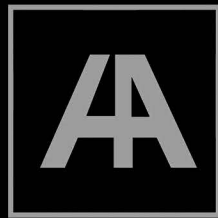
Carrier H6 Hybrid EFI

* PhaseOne Camera Optional

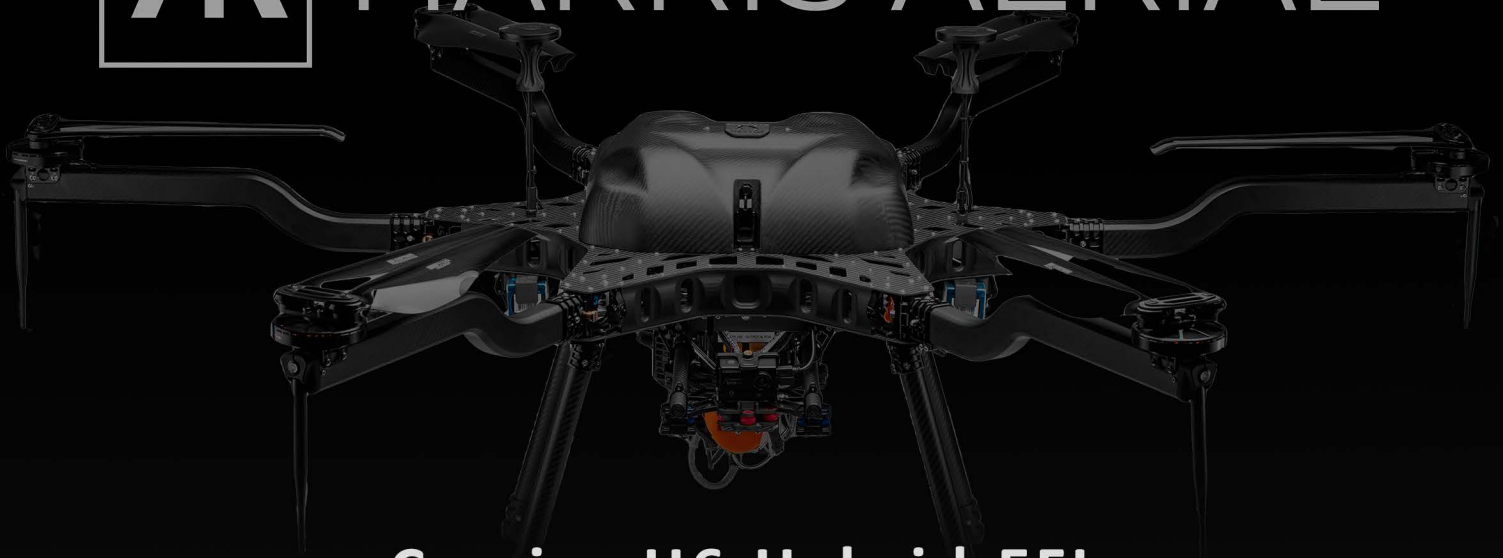


<p>UNLESS OTHERWISE SPECIFIED: DIMENSIONS ARE IN INCHES TOLERANCES: +/- 0.002</p>		<p>NAME Ethan</p> <p>DATE</p>	<p>PROJECT: CARRIER H6</p> <p>DESCRIPTION Hx6 - Hybrid H2400</p>
<p>MATERIAL THICKNESS</p> <p>MATERIAL</p> <p>FINISH</p>		<p>COMMENTS:</p>	<p>SIZE DWG. NO. REV B Hx6 - Base Assembly - [Sizing and Specs] 1</p> <p>SCALE: 1:24 WEIGHT: SHEET 2 OF 3</p>
<p>PROPRIETARY AND CONFIDENTIAL</p> <p>THE INFORMATION CONTAINED IN THIS DRAWING IS THE SOLE PROPERTY OF HARRIS AERIAL LLC. ANY REPRODUCTION IN PART OR AS A WHOLE WITHOUT THE WRITTEN PERMISSION OF HARRIS AERIAL LLC IS PROHIBITED.</p>		<p>APPLICATION</p> <p>DO NOT SCALE DRAWING</p>	<p>Contact us: 309-361-7656</p>





HARRIS AERIAL



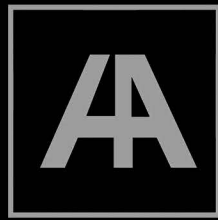
Carrier H6 Hybrid EFI

General			
Maximum Takeoff Weight	51.8lb 23.5kg	Flight modes	- GPS LOITER - ALTITUDE HOLD - FULLY AUTONOMOUS
Empty Weight	32.0lb 14.5kg	Radio Frequencies	2.4 GHz (ISM) 902-928 MHz
Max payload	11.0lb 5.0kg	System Architecture	Open Source
Flight Time	Up to 300 min. (No Payload)	GPS	Dual RTK GNSS
Max Speed	33.6 mph 15 m/s	Payload Mounting	Dampened Modular Quick-Release
Max Vertical Speed	5.6 mph 2.5 m/s	Weather Rating	Light Rain
Max Lean Angle	30 degrees	Flight Safety Systems	- Radio Connectivity Monitoring - Backup Battery Redundancy (5 mins) - Backup Battery Voltage & Amperage Monitoring
Dimensions (unfolded)	- Prop Tip to Tip: 2363.4mm - Landing Gear Base: Length: 614.7mm Width: 654.1mm	Dimensions (folded)	- Height (Customizable): 620mm - Length: 725mm - Width: 780mm
Powerplant			
Engine Model	H2400 EFI (Electronic Fuel Injection) Generator	Safety Features	- Engine Temperature Monitoring - Throttle % Monitoring - Active Engine RPM Feedback
Max Continuous Power	2.4kW	Engine Mode Status	Stop Idle Run
Max Instantaneous Power	8.0kW	Fuel Monitoring	- Real-Time Fuel Flow Sensing via EFI - Engine Run Time Calculator
Auxiliary Power	5.3V , 12V, 24V, 48V Power Ports	Fuel Type	Unleaded 93 Octane
Operation and Environmental			
Operation Temp	-20°C to 40°C -4°F to 104°F	Service Ceiling AMSL	9843ft 3,000m (Payload Dependent)
Max Operational Wind Speed	25 mph 11 m/s	Service Ceiling AGL	400ft 122m (FAA Limited)

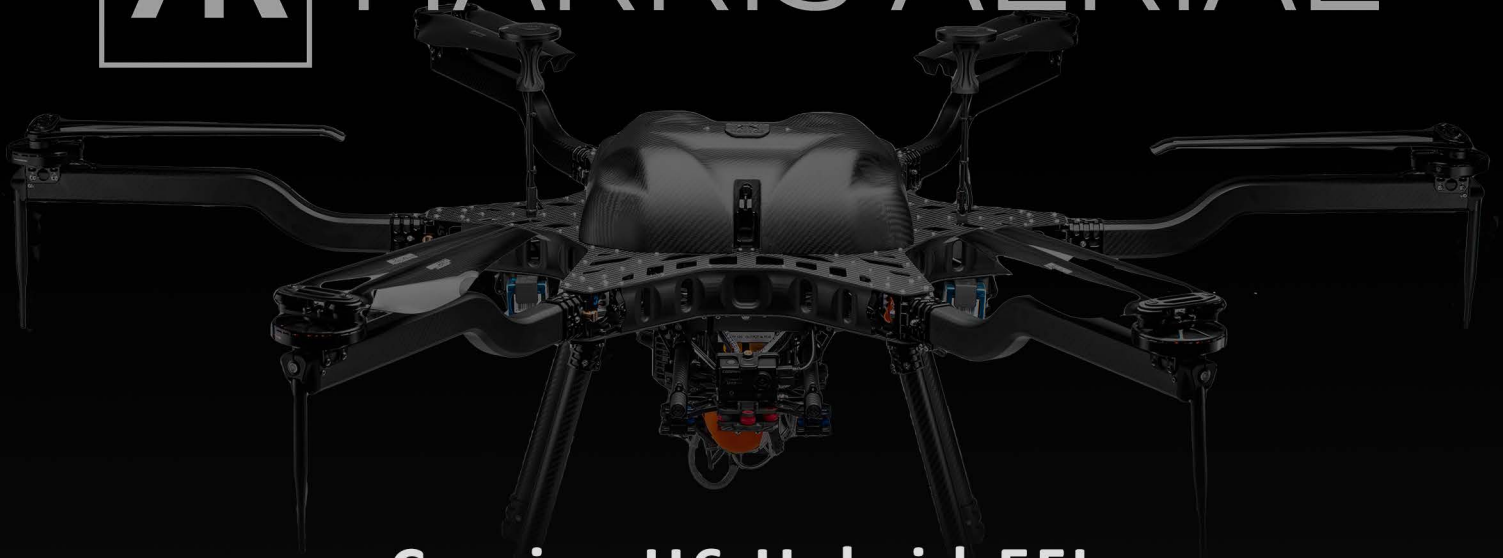


www.hse-uav.com

Contact us:
309-361-7656



HARRIS AERIAL



Carrier H6 Hybrid EFI

Motors and Propellers			
# Motors	6	Motor Configuration	HEXA X
Equivalent KV	KV100 Motors	Propeller Material	Carbon Fiber with Aluminum Hub
Optimal RPM	2,200-2,800 RPM	Propeller Dimensions	29.2in x 9.2in
Command and Control			
Harris C-GCS	- 19in Dual HD Display - Hands-on Throttle-and-Stick (HOTAS) - Freq: 902-928 MHz - 12 Channel Functionality	hereLink	- Handheld Remote - 5.5in Display - Freq: 2.4 GHz (ISM) - 32 Channels Functionality
Flight Controller			
Flight Controller	Cube Orange	Takeoff and Landing	Autonomous or Manual Control
Data Transmission Range	12.5mi 20.0km (Ideal Conditions)	Flight Tracking	ADS-B (Receiver)
Firmware	Custom ArduPilot	Safety Features	- Triple Redundant IMU - Redundant Power Supply
Battery			
Battery Type	6s1p LiPo (2x Batteries)	Battery Capacity	5,000 mAh
Peak Battery Voltage	50.4V	Battery Life Cycle	250 Flights
Nominal Battery Voltage	44.4V	Battery Connector	XT90-S (Anti-Spark)



www.hse-uav.com

Contact us:
309-361-7656