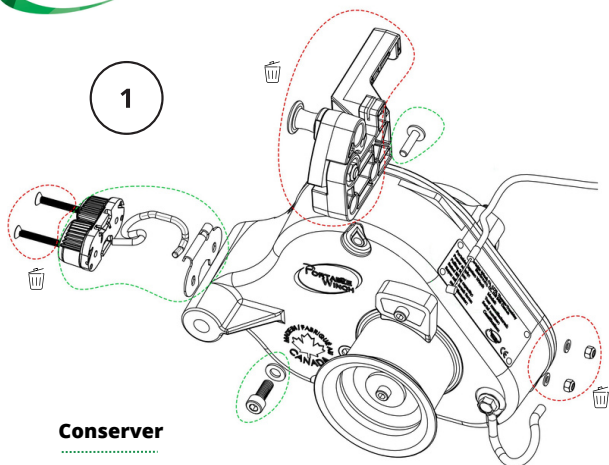


PCA-1161

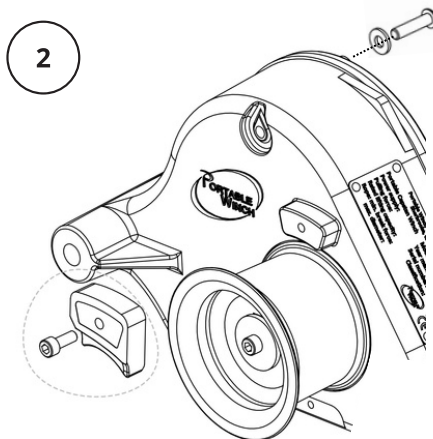
SUPPORT DU BLOQUEUR DE CORDE (SANS TAQUET ET CROCHET DE SORTIE)



Conserver

Disposer

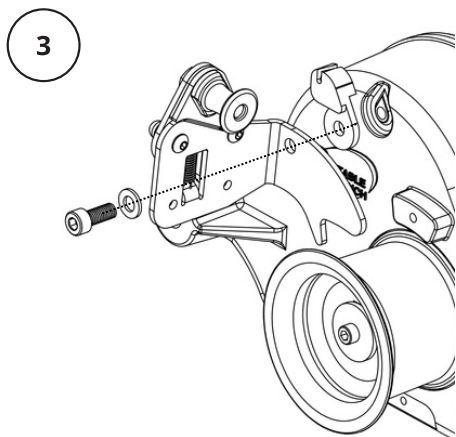
Récupérer les pièces entourées en vert
Disposer des pièces entourées en rouge



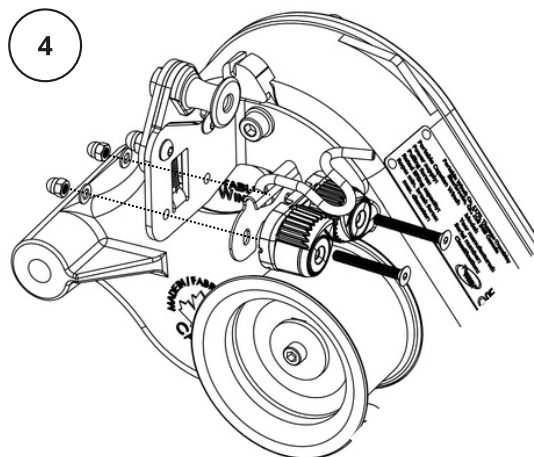
Outils nécessaires

Douille 8mm
Clé hexagonale 6mm
Clé hexagonale 5mm
Clé hexagonale 4mm
Clé hexagonale 3mm

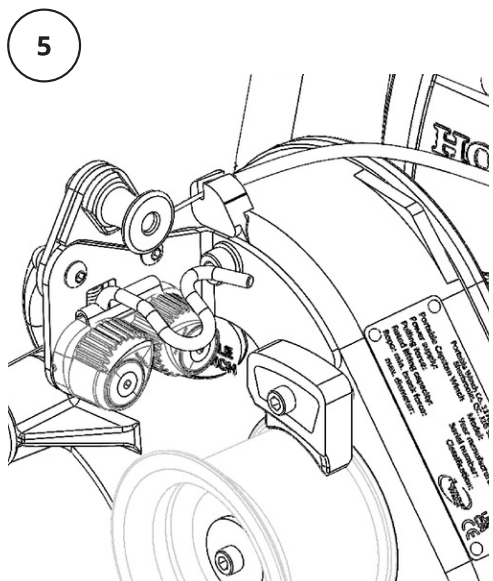
Enlever le guide corde et revisser la vis arrière du boîtier d'engrenages



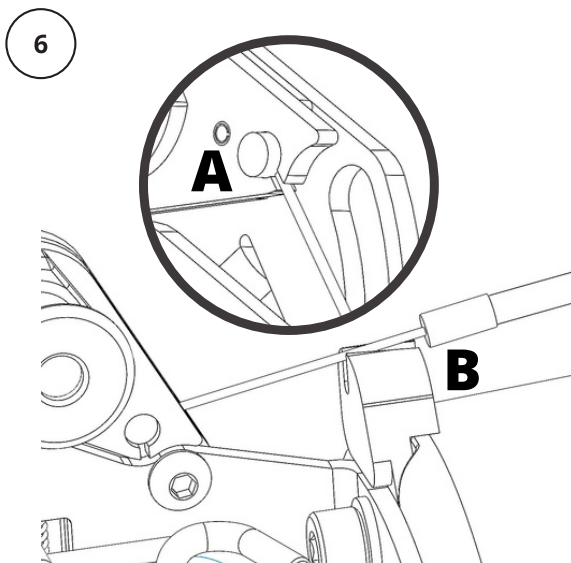
Installer le nouvel ensemble avec le support de câble en utilisant la clé hexagonale de 6 mm



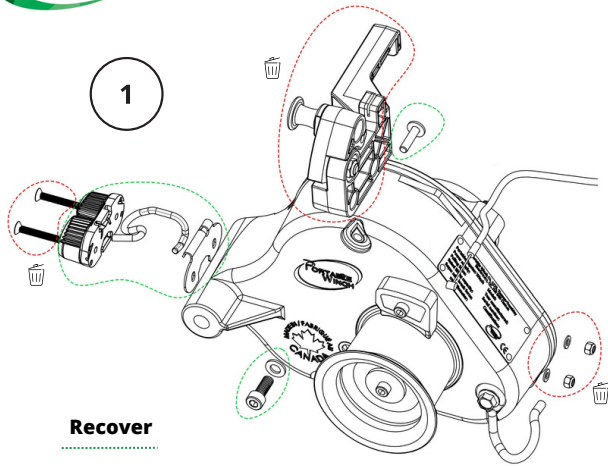
Installez le système de taquet récupéré à l'étape 1 avec les nouveaux boulons de 5 mm et les écrous borgnes.



Installer le guide corde



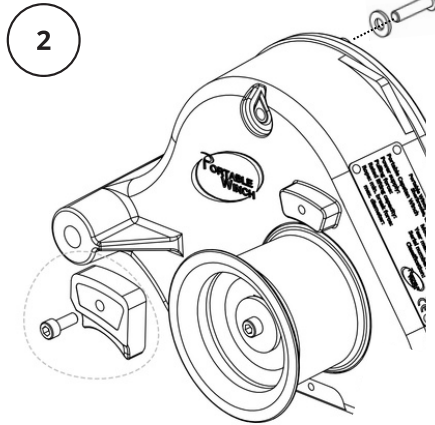
Installer le câble d'accélérateur et le régler si nécessaire
S'assurer que le pivot ouvre complètement sans ajouter de charge supplémentaire au papillon du carburateur.



Recover

Discard

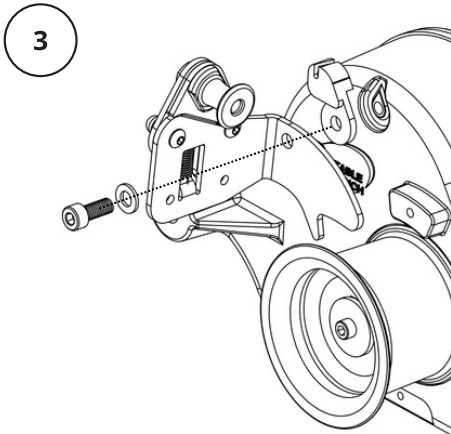
Recover parts circled in green
Discard parts circled in red



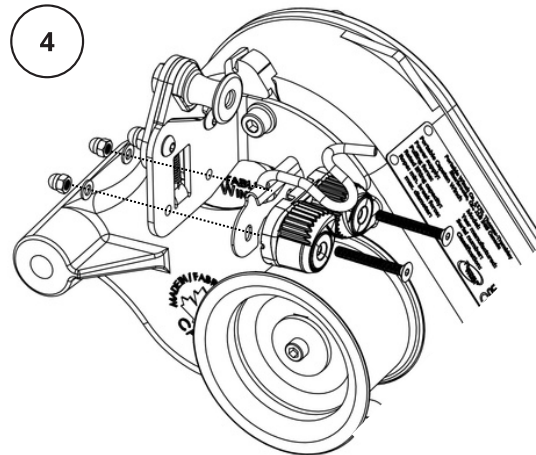
Remove the rope guide and tighten
the rear screw on the gearbox

Tools required

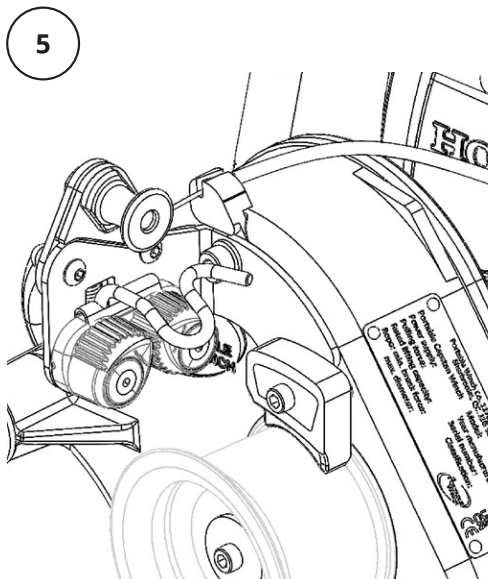
Socket 8mm
Hex key 6mm
Hex key 5mm
Hex key 4mm
Hex key 3mm



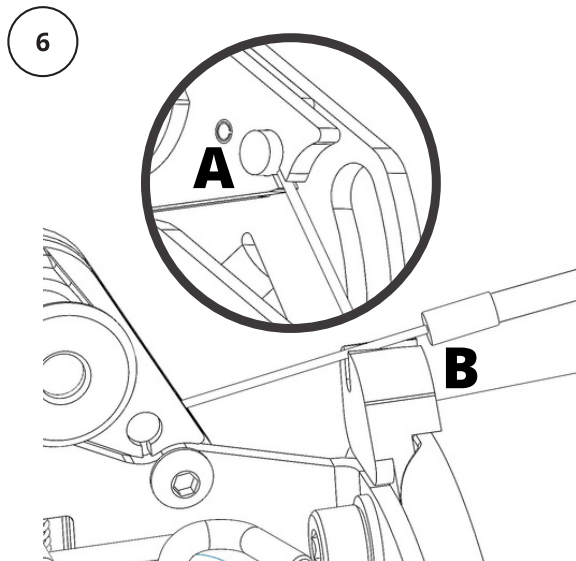
Install the new assembly with cable
holder using 6mm hex key



Install the rope cleat system recovered
in step 1 with the new 5mm bolts and
acorn nuts



Install the rope guide



Install throttle cable and adjust if necessary
Make sure the throttle opens fully without adding
extra load to the throttle linkage.