

Update LKx Pro touch screen firmware

Wednesday, December 16, 2020 10:39 AM

Applicable printer model

LONGER LK4 Pro, LK5 Pro

Preparation

LK4 Pro/LK5 Pro; a computer; a micro SD card; a card reader; allen key

Touch screen model identification

LK4 PRO and LK5 PRO support multiple touch screen model, and the screen firmware update methods are different for different touch screen model. So the first thing is to identify touch screen model.

1. Power on printer.
2. Tap the "about" icon on the home page of touch screen.
3. Check the "Screen firmware ver." message in "about" page as shown below.

the screen firmware message format is "V.V.V-MMMM". the "V.V.V" is the firmware version while the "MMMM" is the screen model. There are four kinds of models totally, including "**DW**", "**T5L**", "**DWTJ**" and "**DWTJB**". If you could not find any models mentioned above, your touch screen model very likely is "**DW**", because the "**DW**" model has the most quantity among four models.

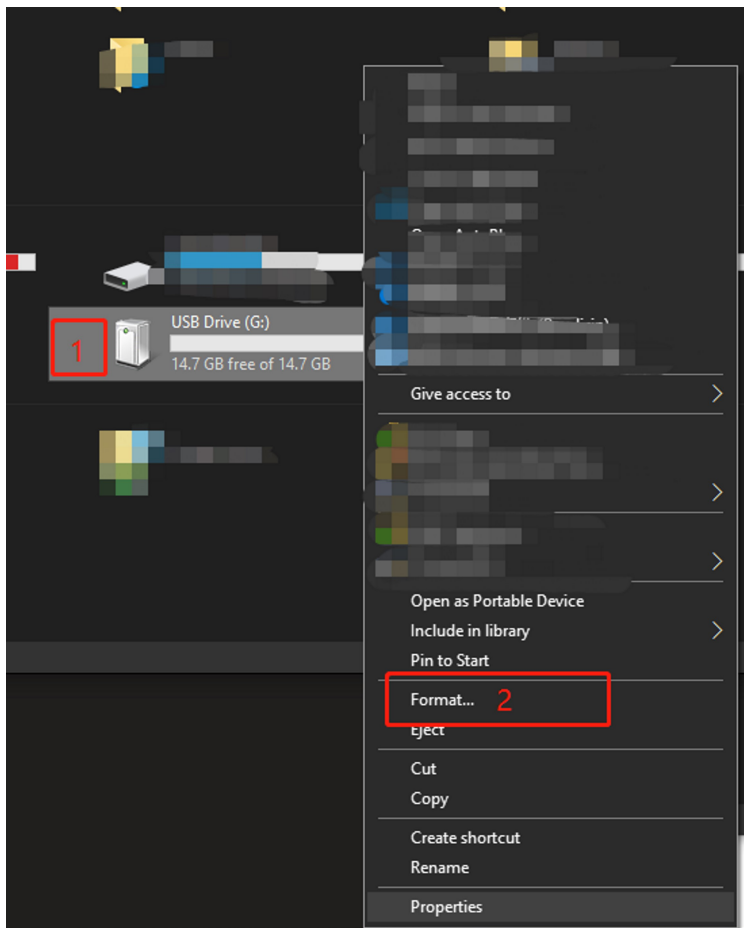
For example, the image below shows that touch screen model is "**DW**".



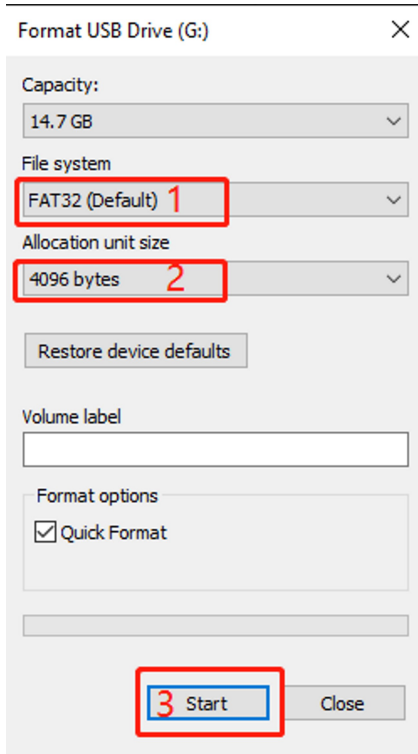
4. Select next steps according the touch screen model

For "DW" touch screen model

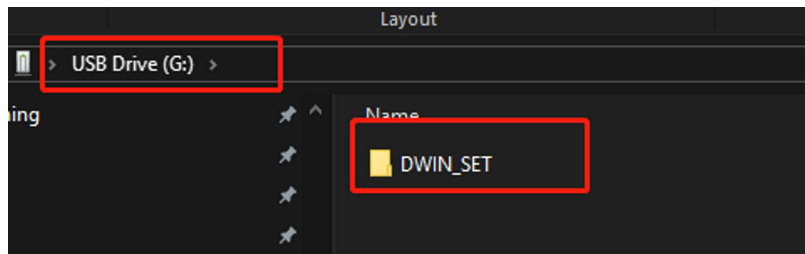
1. Inserted micro SD card to card reader, then plug it into your PC.
2. Right click the your SD card disk volume icon, click "Format..." item in pop-up menu.



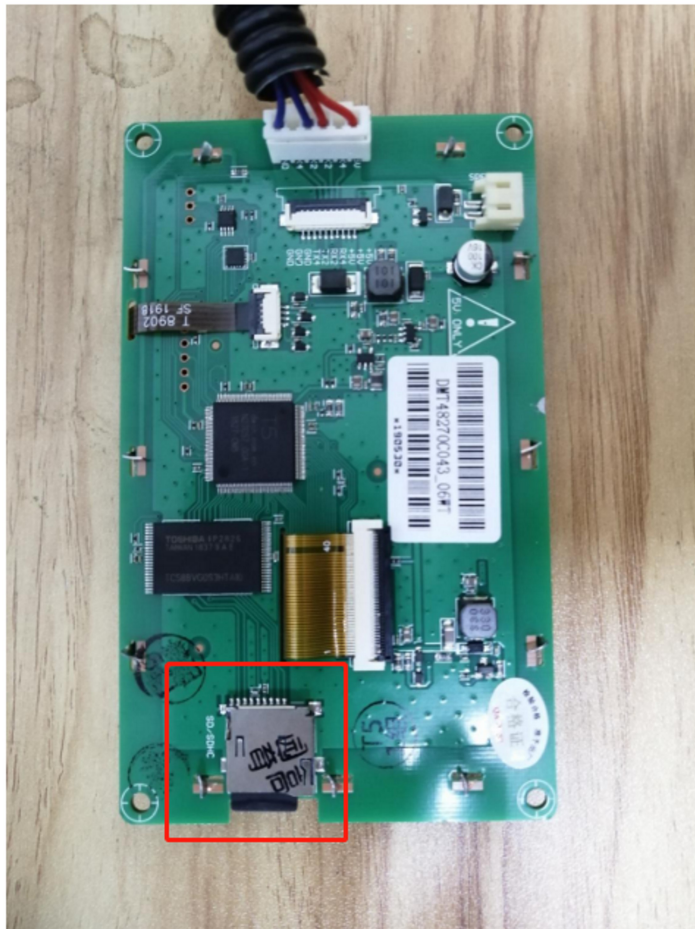
3. Select "FAT32" file system, and "4096 bytes" in format dialog, then click "start" button.



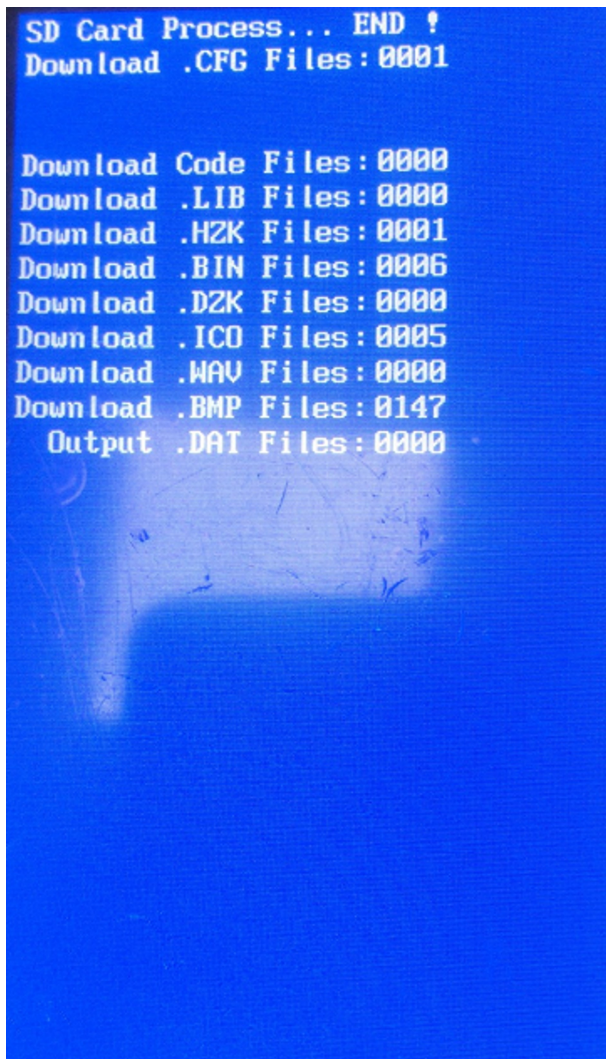
4. Find "DWIN_SET" folder in "/UI/DW-x.x.x" and copy "DWIN_SET" folder to the root directory of SD card. (Note: the folder name "DWIN_SET" should not be modified)



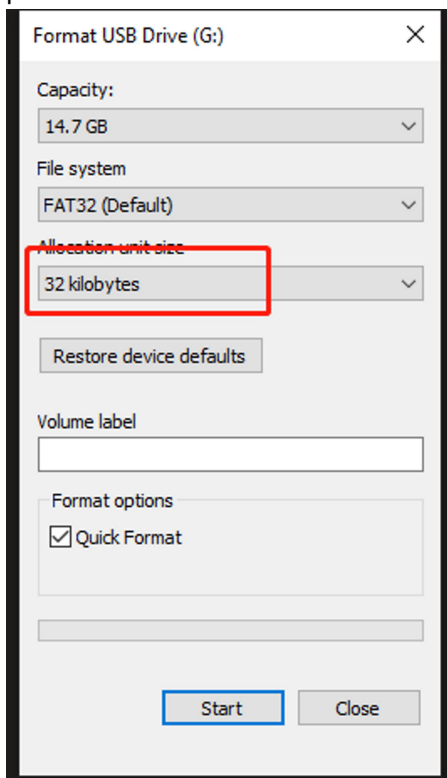
5. Unscrew touch screen case. Take the touch screen out of the case.
6. Remove SD card from PC, then insert it into the touch screen card slot.



7. Reboot your printer, then waiting for the screen firmware update. You will see the information when it done as shown below:



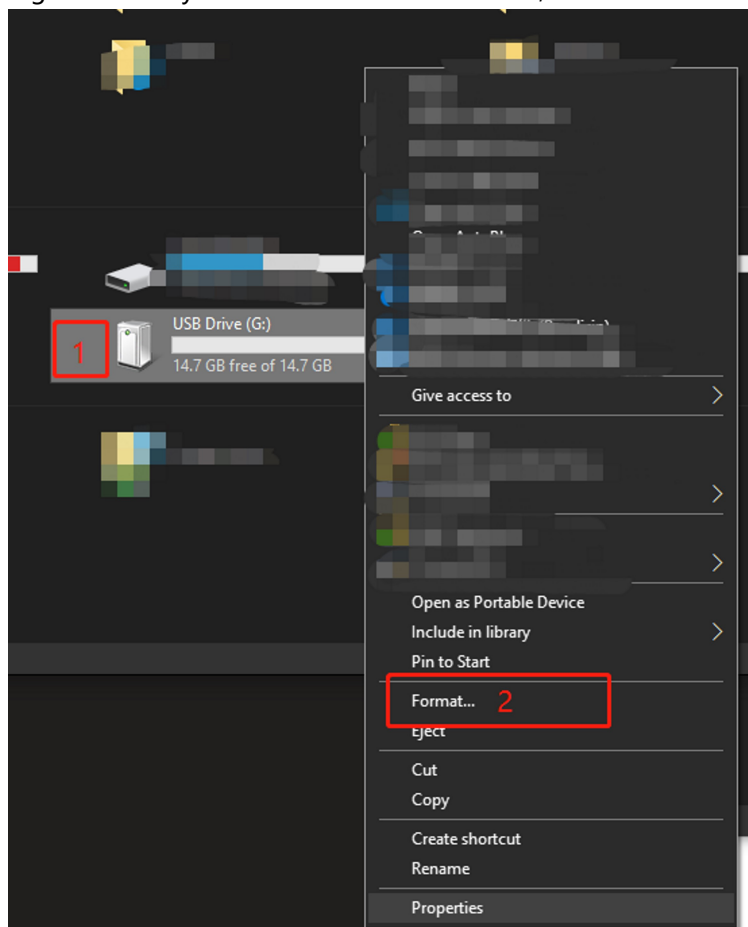
8. Remove card from screen. reboot your printer. check the firmware version in "ABOUT" menu.
9. Reformat your SD card file system back to "32 kilobytes" allocation unit size to prevent from some potential problem.



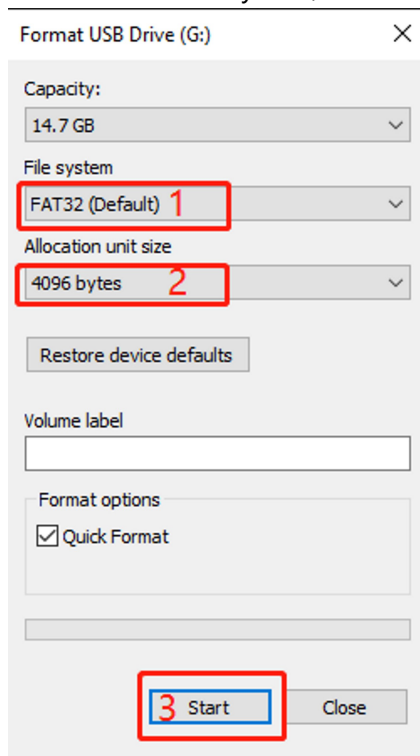
10. Have fun! :)

For "T5L" touch screen model

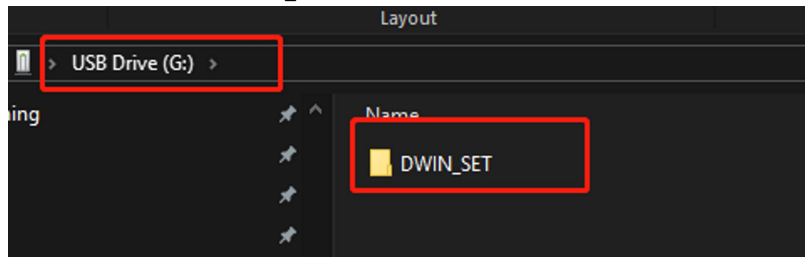
1. Inserted micro SD card to card reader, then plug it into your PC.
2. Right click the your SD card disk volume icon, click "Format..." item in pop-up menu.



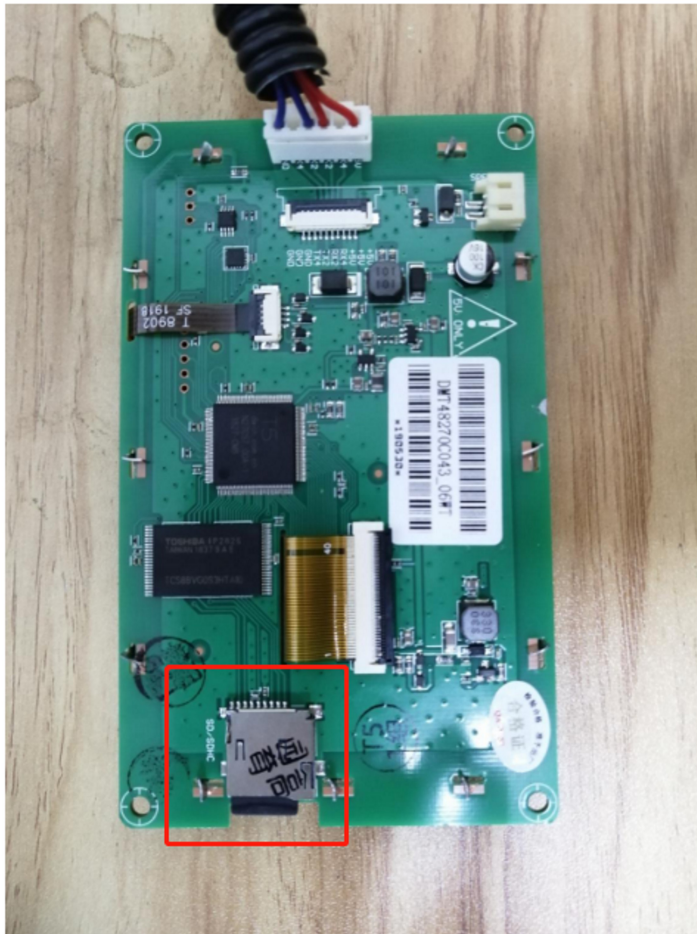
3. Select "FAT32" file system, and "4096 bytes" in format dialog, then click "start" button.



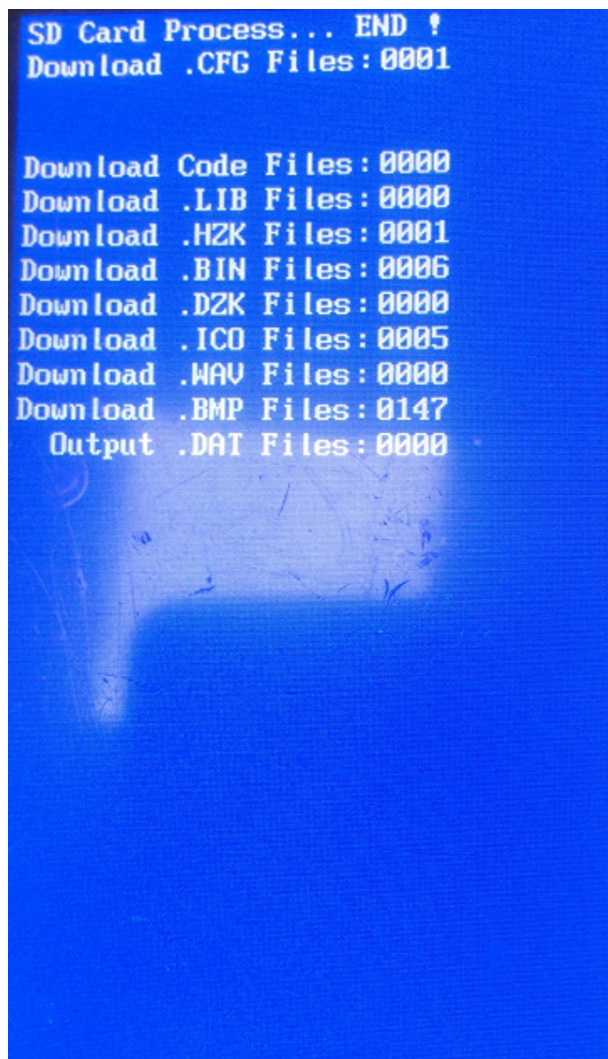
- Find "DWIN_SET" folder in "/UI/T5L-X.X.X" and copy "DWIN_SET" folder to the root directory of SD card. (Note: the folder name "DWIN_SET" should not be modified)



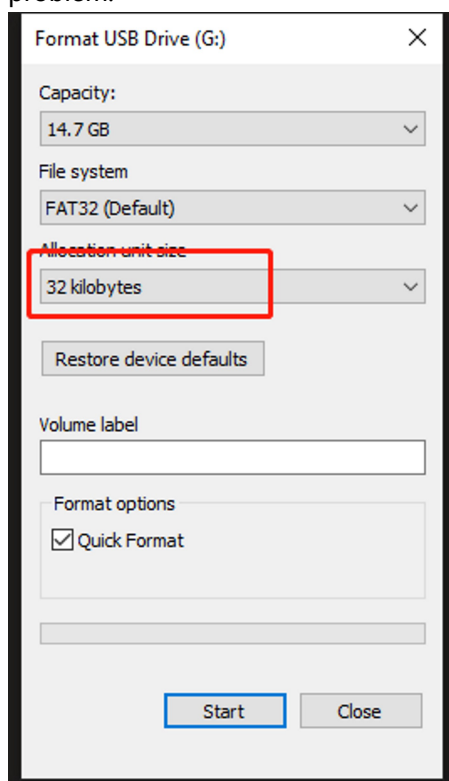
- Unscrew touch screen case. Take the touch screen out of the case.
- Remove SD card from PC, then insert it into the touch screen card slot.



- Reboot your printer, then waiting for the screen firmware update. You will see the information when it done as shown below:



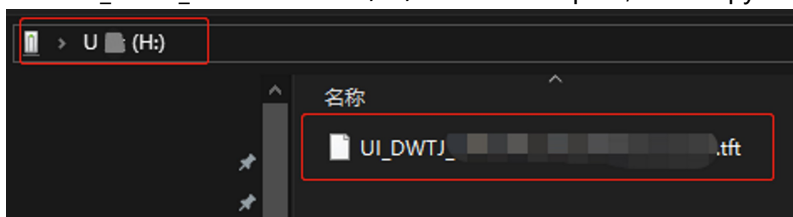
8. Remove card from screen. reboot your printer. check the screen firmware version in "ABOUT" menu.
9. Reformat your SD card file system back to "32 kilobytes" allocation unit size to prevent from some potential problem.



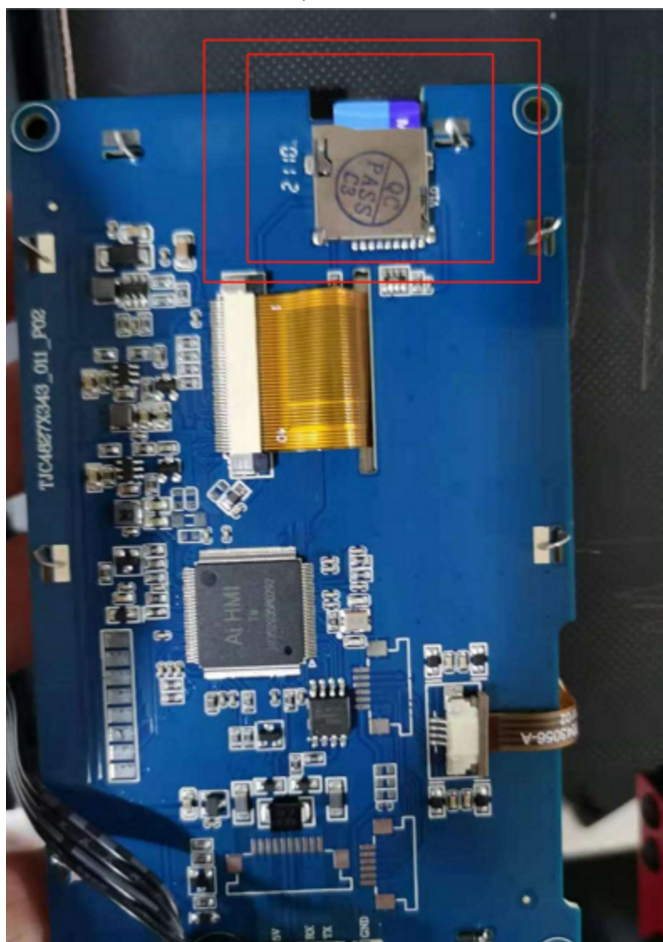
10. Have fun! :)

For "DWTJ" touch screen model

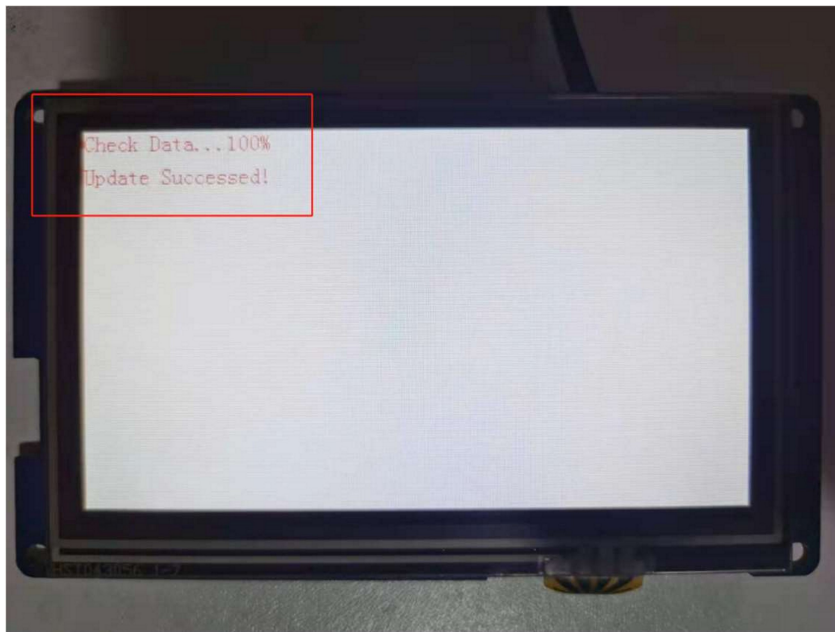
1. Confirm the file system of Micro SD card is "FAT32", If not, format it to "FAT32" file system
2. Find "UI_DWTJ_XXX.tft" file in "/UI/DWTJ-X.X.X" path, then copy the file to the root directory of SD card.



3. Unscrew touch screen case. Take the touch screen out of the case.
4. Remove SD card from PC, then insert it into the touch screen card slot.



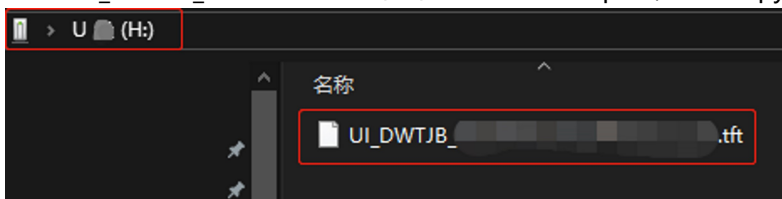
5. Reboot your printer, then waiting for the screen firmware update. You will see the information when it done as shown below:



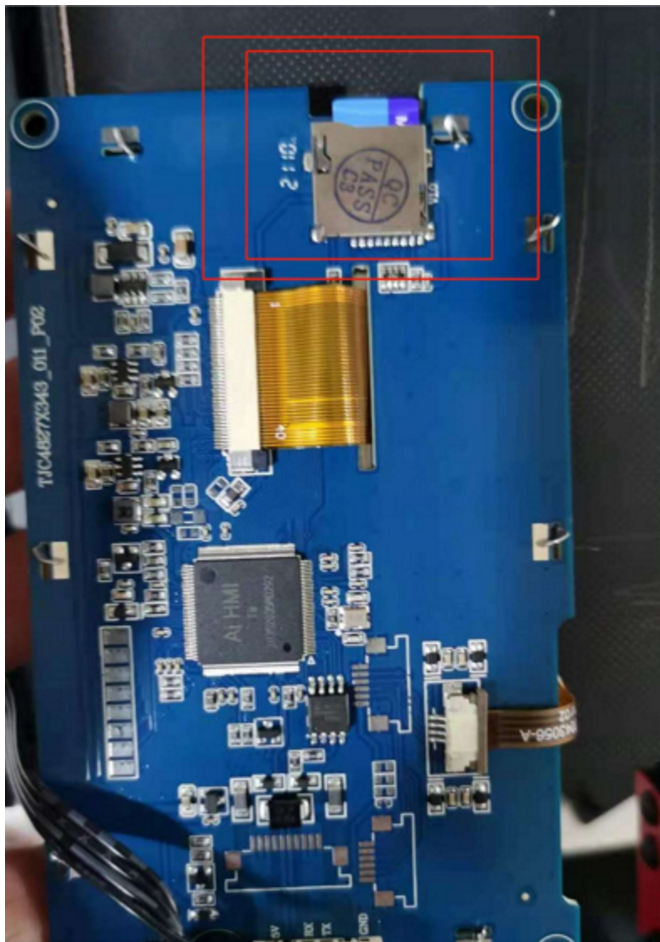
6. Remove card from screen. reboot your printer. check the screen firmware version in "ABOUT" menu.
7. Have fun! :)

For "DWTJB" touch screen model

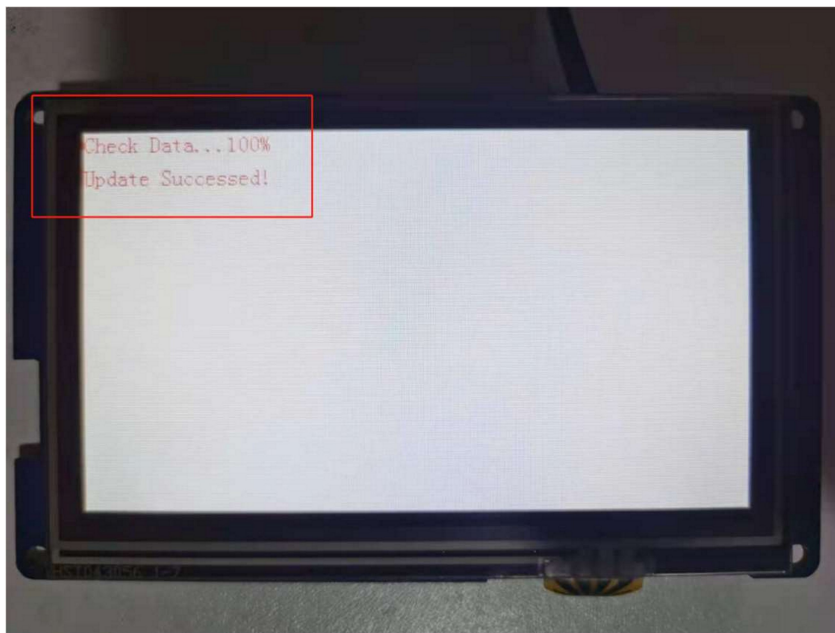
1. Confirm the file system of Micro SD card is "FAT32", If not, format it to "FAT32" file system
2. Find "UI_DWTJB_XXX.tft" file in "/UI/DWTJB-X.X.X" path, then copy the file to the root directory of SD card.



3. Unscrew touch screen case. Take the touch screen out of the case.
4. Remove SD card from PC, then insert it into the touch screen card slot.



5. Reboot your printer, then waiting for the screen firmware update. You will see the information when it done as shown below:



6. Remove card from screen. reboot your printer. check the screen firmware version in "ABOUT" menu.
7. Have fun! :)

Document Information

Version	Date	Author	Remark
1.0	2020-12-16	longer3d-freejoe	first release
1.1	2022-01-07	longer3d-freejoe	<ul style="list-style-type: none">• fix some typo• add multiple touch screen update method