

human ACE2 protein, mouse Fc tag

Catalog Number : RPC-007

Protein Construction :

A DNA sequence encoding the human ACE2 (Gln18-Ser740) protein was expressed with the Fc region of mouse IgG2a at the C-terminus.

Target Name :

ACE2
Angiotensin-converting enzyme 2

Source : Human

Accession # : Q9BYF1

Expressed Host : CHO cells

Tags : mouse Fc Tag C-Terminus

Molecule Mass :

The recombinant human ACE2 protein, mouse Fc tag consists of 958 amino acids and predicts a molecular mass of 110.1 kDa.

Predicted N Terminal : Gln18

A.A. Sequence :

QSTIEEQAKTFLDKFNHEAEDLFYQSSLASWNYNTNITEENVQNM
NNAGDKWSAFLKEQSTLAQMYPQLQNLTVKLQLQALQQNGSS
VLSSEKSKRLNLTMTSTIYSTGKVCNPDNPQECLLLEPGLNEIMA
NSLDYNERLWAWESWRSEVGKQLRPLYEEYVVLKNEMARANHYE
DYGDYWRGDYEVNGVDGYDYSRGLIEDVEHTFEEIKPLYEHLHA
YVRAKLMNAYPSYISPIGCLPAHLLGDMWGRFWTNLYSLTVPFGQ
KPNIDVTDAMVDQAWDAQRFKEAEKFFVSVGLPNMTQGFWENS
MLTDPGNVQKAVCHPTAWDLGKGDFRILMCTKVTMDDFLTAHHE
MGHIQYDMAYAAQPFLLRNGANEGFHEAVGEIMSLSAATPKHLKS
IGLLSPDFQEDNETEINFLLKQALTIVGTLPTMLEKWRWVMVFKG
EIPKDQWMKKWEMKREIVGVVPEVPHDETYCDPASLFHVSNDY
SFIRYYTRTLYQFQFQEQALCQAAKHEGPLHKCDISNTEAGQKLFN
MLRLGKSEPWTLAENVVGAKNMNRPLLNYPFLFTWLKDQNK
NSFVGWSTDWSPYADQSIKVRISLKSALGDKAYEWNDEMNYLFR
SSVAYAMRQYFLKVKVQNMILFGVEEDVRVANLKRISFNFFVTAPKN
VSDIIPRTEVEKAIRMSRSRINDAFRLNDNSLEFLGIQPTLGPNNQPP
VSASEPRGPTIKPCPPCKCPAPNLLGGPSVFIFPPKIKDVLMLISLPI
VTCVVVDVSEDDPDVQISWVFNNEVHTAQTQTHREDYNSTLRV
VSALPIQHQQDWMMSGKEFKCKVNNKDLPAPIERTISKPKGSVRAPQV
YVLPPEEEMTKKQVTLTCMVTDFMPEDIYVEWTNNGKTELNYKN
TEPVLDSGYSFYMSKLRVEKKNWVERNSYSCSVVHEGLHNHHT
TKSFSRTPGK*

Conc. : 1 mg/mL

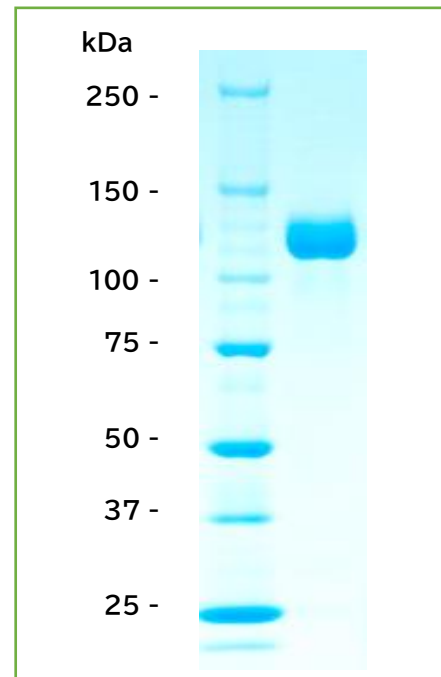
Vol. : 0.1 mL

Purity : >90%

Structure :

human ACE2 (18-740)

mouse Fc Tag

SDS-PAGE :

Formulation : liquid

Buffer : PBS(pH7.4)

Storage : -20°C to -80°C

Notes : Avoid repeated freeze-thaw cycles.