

# SARS-CoV-2 (2019-nCoV) / COVID-19 S1 protein, human Fc tag

Catalog Number : RPC-001

## Protein Construction :

A DNA sequence encoding the SARS-CoV-2 (2019-nCoV) spike protein S1 Subunit (Val16-Arg685) was expressed with the Fc region of human IgG1 at the C-terminus.

## Target Name :

Severe Acute Respiratory Syndrome Coronavirus 2 (SARS-CoV-2(2019-nCoV)/COVID-19) Spike glycoprotein S1 Subunit

**Source :** SARS-CoV-2 (2019-nCoV)

**Accession # :** QHD43416.1

**Expressed Host :** CHO cells

**Tags :** human Fc Tag C-Terminus

## Molecule Mass :

The recombinant SARS-CoV-2 (2019-nCoV) Spike Protein (S1 Subunit, hFc Tag) consists of 914 amino acids and predicts a molecular mass of 102.3 kDa.

**Predicted N Terminal :** Val16

## A.A. Sequence :

VNLTRTRQLPPAYTNSFTRGVYYPDKVFRSSVLHSTQDLFLPFFSN  
VTWFHAIHVSGTNGTKRFDNPVLPFNDGVYFASTEKSNIRGWIFG  
TTLDSKTQSLIVNATNVVIVKVFCEQFCNDPFLGVYHKNKNSW  
MESEFRVYSSANNCTFEYVSQPFLMDLEGKQGNFKNLREFVFKNI  
DGYFKIYSKHTPINLVRDLPQGFSALEPLVDLPIGINITRFQTLALH  
RSYLTPGDSSSGWTAGAAAYVGYLQPRTFLLKYNENGTITDAVD  
CALDPLSETKCTLSFTVEKGIYQTSNFRVQPTESIVRFPNITNLCP  
FGEVFNATRFASVYAWNRKRISNCVADYSVLYNSASFSTFKCYGV  
SPTKLNLCFTNVYADSFVIRGDEVQRQIAPGQTGKIADYNYKLPDD  
FTGCVIAWNSNLDLSDKVGNYLYRLFRKSNLKPFRDISTEIYQ  
AGSTPCNGVEGFNCYFPLQSYGFQPTNGVGYQPYRVVLSFELL  
HAPATVCGPKKSTNLVKNKCVNFNGLTGTGVLTESNKKFLPFQ  
QFGRDIADTTDAVRDPQTLEILDITPCSFVGGVSVITPGTNTSNQVA  
VLYQDVNCTEVPVAIHADQLTPTWRVYSTGSNVQTRAGCLIGAE  
HVNNSYECDIPIGAGICASYQTQTNPRRARASLEVLFGQPAAEK  
SCDKTHTCPPEPELLGGPSVFLFPPKPKDTLMISRTPEVTCVVV  
DVSHEDPEVKFNWYVDGVEVHNAKTKPREEQYNSTYRVVSVLTV  
LHQDWLNGKEYKCKVSNKALPAPIEKTISKAKGQPREPQVYTLPP  
SRDELTKNQVSLTCLVKGFYPSDIAVEWESNGQPENNYKTTTPVL  
DSDGSFFLYSKLTVDKSRWQQGNVFCFSVMHEALHNHYTQKSL  
SLSPGK\*

**Conc. :** 1 mg/mL

**Vol. :** 0.1 mL

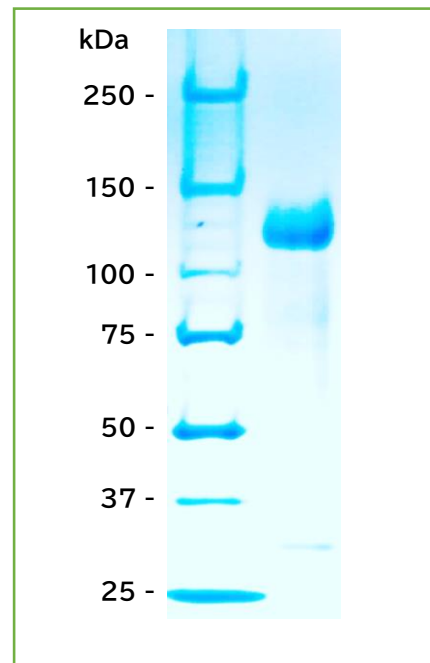
**Purity :** >90%

## Structure :

S1 protein(16-685)

human Fc Tag

## SDS-PAGE :



**Formulation :** liquid

**Buffer :** PBS(pH7.4)

**Storage :** -20°C to -80°C

**Notes :** Avoid repeated freeze-thaw cycles.