

# Bovine IgG1 Isotype Control

Catalog Number : ICA-003

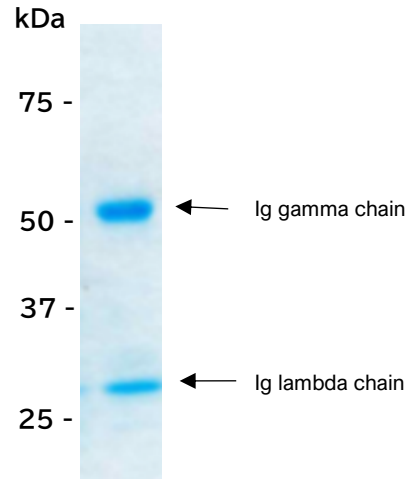
**Protein Construction :**

The Ig gamma and lambda chain were cloned from total RNA of Bovine (*Bos taurus*) PBMC by PCR. The expression plasmids were co-transfected and the recombinant antibody was expressed as full-length IgG protein.

**Source :** Bovine (*Bos taurus*)**Expressed Host :** CHO cells**Formulation :** liquid**Buffer :** PBS(pH7.4)**Storage :** -20°C to -80°C**Molecule Mass :**

The recombinant Bovine Ig gamma chain protein predicts a molecular mass of 50.0 kDa.

The recombinant Bovine Ig lambda chain protein predicts a molecular mass of 22.8 kDa.

**Conc. :** 1 mg/mL**Vol. :** 0.1 mL**Purity :** >90%**SDS-PAGE :****A.A. Sequence :**

Ig gamma:

QVQLRESGPSLVKPSQTLSTCTVSGFSLSSYGVGWVRQ  
 APGKALEYLGGITGRGNTGYNLALKYRLSITKDNSKQVSL  
 SLSSVTTEDTATYYCAKFGDTCYNFYEGVDAWQTTTCYV  
 DAWGQGLMVTVSSASTTAPKVYPLSSCCGDKSSSTVTLG  
 CLVSSYMPEPVTVTWNSGALKSGVHTFPAVLQSSGLYSL  
 SSMVTVPGSSSGQTFTCNVAHPASSTKVDKAVDPRCKTT  
 CDCCPPELPGGPSVFIFPPKPKDTLTISGTPEVTCVVVDV  
 GHDDPEVKFSWFVDDVEVNTATTKPREEQFNSTYRVVSAL  
 RIQHQDWTGGKEFKCKVHNEGLPAPIVRTISRTKGPAREPQ  
 VYVLAPPQEELSKSTVSLTCMVTSFYPDYIAVEWQRNGQP  
 ESEDKYGTTPPQLDADGSYFLYSRLRVDNRNSWQEGDTYT  
 CVVMHEALHNHYTQKSTSKSAGK\*

Ig lambda:

QAVLTQPSSVSGSLGQRVSITCSGSSSNVGYGNVNWVWFQ  
 QIPGSAPRTLIIYGATSRASGVPDRFSGSRSGNTATLTISSL  
 QAEDEADYFCASYDTSIAISSSKFGSGTTLTVLGQPKSPPS  
 VTLFPPSTEELNGNKATLVCLISDFYPGSVTVVWKADGSTI  
 TRNVETTRASKQSNKYAASSYLSLTSSDWKSKGSYSCEV  
 THEGSTVTKTKPSECS\*