

Marmoset IgG Isotype Control

Catalog Number : ICA-002**Protein Construction :**

A DNA sequence encoding the Marmoset Ig gamma chain and Ig kappa chain was co-transfected and the recombinant protein was expressed as full-length antibody protein.

Conc. : 1 mg/mL**Vol. :** 0.1 mL**Purity :** >90%**SDS-PAGE :****Source :** Marmoset (*Callithrix jacchus*)**Accession #**

Ig gamma complementarity-determining region : AF393235

Ig gamma constant region : BBXK01013282.1

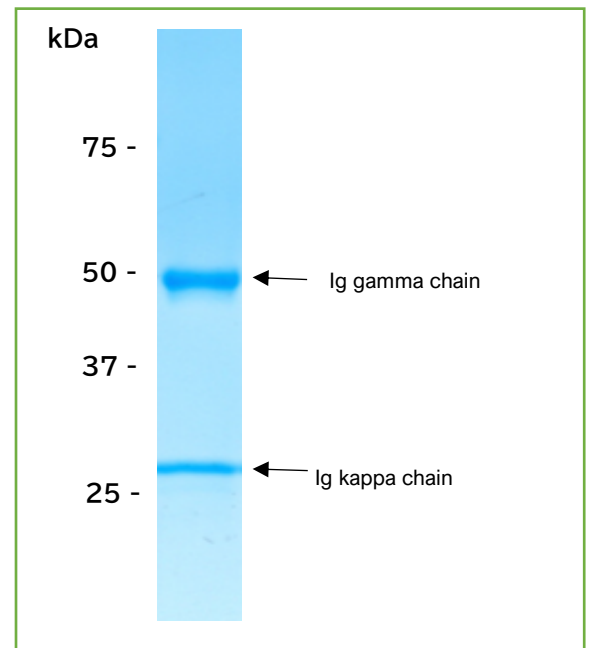
Ig kappa complementarity-determining region : AF393236

Ig kappa constant region : NC_048396.1

Expressed Host : 293 cells**Formulation :** liquid**Buffer :** PBS(pH7.4)**Storage :** -20°C to -80°C**Molecule Mass :**

The recombinant Marmoset Ig gamma chain protein predicts a molecular mass of 48.6 kDa.

The recombinant Marmoset Ig kappa chain protein predicts a molecular mass of 23.7 kDa.

**References :**

PNAS, volume 99, number 12 8207-8212 (2002)

Scientific Reports, volume 5, number 16894 (2015)