

# Marmoset IgE Isotype Control

**Catalog Number : ICA-001****Protein Construction :**

A DNA sequence encoding the Marmoset Ig epsilon chain and Ig kappa chain was co-transfected and the recombinant protein was expressed as full-length antibody protein.

**Conc. :** 1 mg/mL**Vol. :** 0.1 mL**Purity :** >90%**Source :** Marmoset (*Callithrix jacchus*)**Accession #**

Ig epsilon complementarity-determining region : AF393235

Ig epsilon constant region : JF346115.1

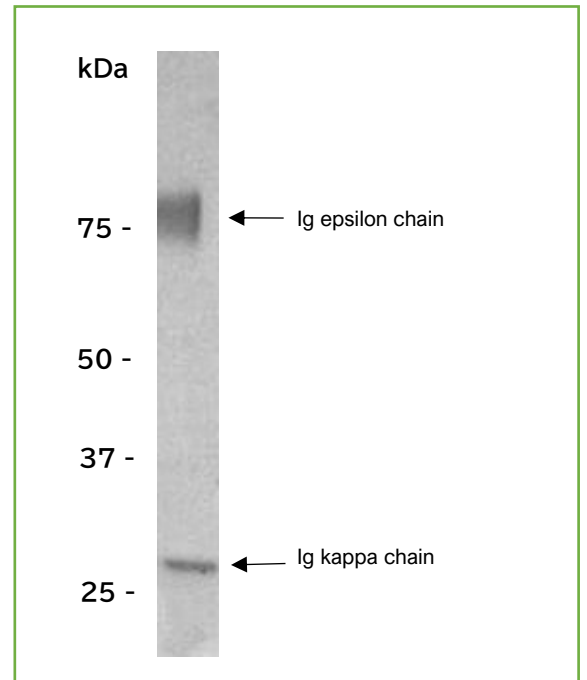
Ig kappa complementarity-determining region : AF393236

Ig kappa constant region : NC\_048396.1

**Expressed Host :** 293 cells**Formulation :** liquid**Buffer :** PBS(pH7.4)**Storage :** -20°C to -80°C**Molecule Mass :**

The recombinant Marmoset Ig epsilon chain protein predicts a molecular mass of 59.8 kDa.

The recombinant Marmoset Ig kappa chain protein predicts a molecular mass of 23.7 kDa.

**SDS-PAGE :****References :**

PNAS, volume 99, number 12 8207-8212 (2002)