

**Monoclonal Antibody**  
**Catalog No. CEC-U008**

**For research use only.**  
**Not for use in diagnostic procedures.**

## Anti- SARS-CoV-2(2019-nCoV) / COVID-19 S1 antibody(Clone No.SA15)

Clone	Cross reactivity	Application notes	Host	Isotype	Storage
SA15	-	WB, ICC, ELISA	rabbit	IgG, $\kappa$	-20°C

**BACKGROUND** : SARS-CoV-2(2019-nCoV) , a kind of coronaviruses, is causes of severe human respiratory disease COVID-19. The spike (S) protein of SARS-CoV-2, which plays a key role in the receptor recognition and cytomembrane fusion process, is composed of two domains, S1 and S2. The S1 subunit contains a receptor-binding domain that recognizes and binds to the host receptor angiotensin-converting enzyme-2 (ACE2).

**Immunogen** Recombinant SARS-CoV-2 S1 protein (Val16-Arg685) with His tag at the C-terminus

**Host** Rabbit

**Isotype** IgG,  $\kappa$

**Cross reactivity** -

**Specificity** SARS-CoV-2(2019-nCoV) S1 protein

**Application notes** Recommended use

WB, ICC, ELISA

Recommended dilutions

Western blotting: 1/5000 (Fig.1)

Immunocytochemistry: 1/250 (Fig.2)

ELISA : 1/5000

Other applications have not been tested.

Optimal dilutions/concentrations should be determined by the end user.

**Source** Recombinant antibody/293 cell culture supernatant

**Purification** Affinity chromatography (Protein A)

**Form** Liquid

**Presentation** Purified monoclonal antibody in PBS, 50% Glycerol, 0.05%w/v ProClin300

**Concentration** 1 mg/mL

**Volume** 100  $\mu$ L

**Storage** Store below -20°C

(below -70°C for prolonged storage)

Aliquot to avoid cycles of freeze/thaw.

References

**Data**

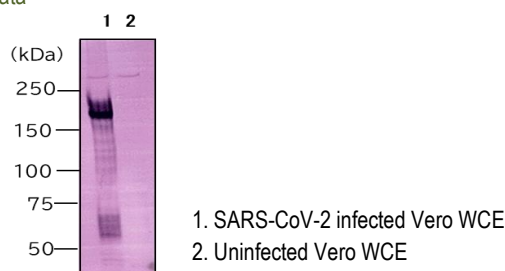


Fig.1 Western blot - SARS-CoV-2 S1 antibody (SA15) SARS-CoV-2 infected or uninfected Vero total cell extracts

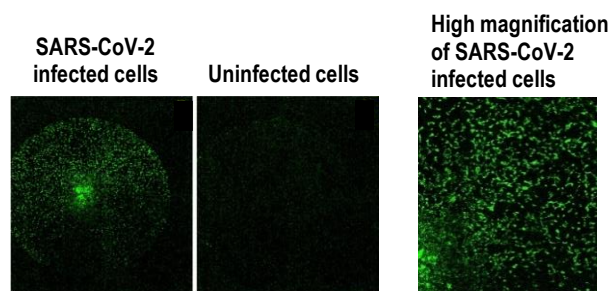


Fig.2 Immunocytochemistry/Immunofluorescence - SARS-CoV-2 S1 antibody (SA15) SARS-CoV-2 infected or uninfected Vero cells

Other Data Link : UniProtKB/Swiss-Prot P0DTC2



株式会社 細胞工学研究所  
 Cell Engineering Corporation

<https://cell-eng.com/>

E-mail : support@cell-eng.com

Sansei Bld., 5-12-14 Nishinakajima, Yodogawa-ku, Osaka 532-0011, JAPAN