

Anti-Tau S199ph antibody (Clone No. 5B8-1E2)

Clone	Cross reactivity	Application notes	Host	Isotype	Storage
5B8-1E2	Hu	ELISA, WB, IHC	Rat	IgG2a, κ	-20°C

BACKGROUND : Tau are proteins that stabilize microtubules and have several splicing variants in neurons. It is well known that pathologies of the nervous system such as Alzheimer's disease are associated with tau proteins.

Immunogen Tau (189-209) S199ph peptide :
 CPKSGDRSGYS(phS)PGSPGTPGSR
Host Rat
Isotype IgG2a, κ
Cross reactivity Human
 Other species have not been tested.
Specificity Tau S199ph
Application notes Recommended use
 ELISA, WB, IHC
 Recommended dilutions
 Western blotting, 1/1000 to 1/5000
 Immunohistochemistry, 1/100 to 1/500
 Other applications have not been tested.
 Optimal dilutions/concentrations should be determined by the end user.

Source Culture Supernatant
Purification Ion-exchange chromatography
Form Liquid
Presentation Purified monoclonal antibody in PBS,
 50% Glycerol, 0.05%w/v ProClin300
Concentration 1 mg/mL
Volume 100 μL
Storage Store below -20°C
 (below -70°C for prolonged storage)
 Aliquot to avoid cycles of freeze/thaw.

References

Data

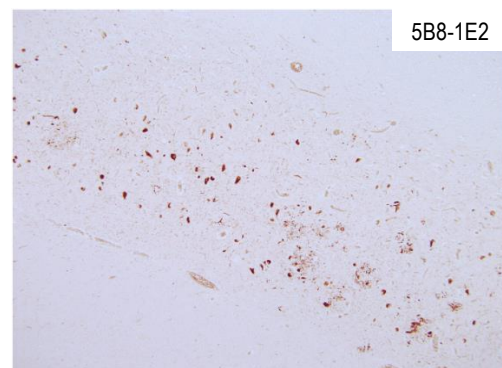


Fig.1 Immunohistochemistry/Immunofluorescence
 - Tau S199ph antibody (5B8-1E2)
 AD autopsy brain paraffin sections

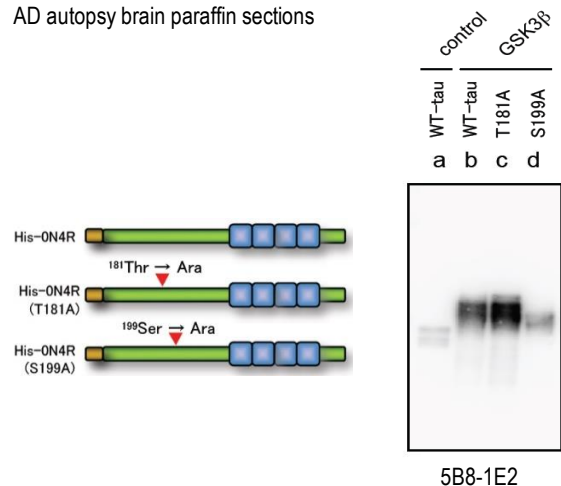


Fig.2 Western blot - Tau S199ph antibody (5B8-1E2)
 Recombinant protein
 (Fig.1,2 : Dr. Tomohiro Miyasaka, Nihon University)