

Anti-Tau T181ph antibody (Clone No. 2E2-A6)

Clone	Cross reactivity	Application notes	Host	Isotype	Storage
2E2-A6	Hu	ELISA, WB, IHC	Rat	IgG2b, κ	-20°C

BACKGROUND : Tau are proteins that stabilize microtubules and have several splicing variants in neurons. It is well known that pathologies of the nervous system such as Alzheimer's disease are associated with tau proteins.

Immunogen Tau (171-191) T181ph peptide :
CIPAKTPPAPK(phT)PPSSGEPKKS
Host Rat
Isotype IgG2b, κ
Cross reactivity Human
Other species have not been tested.
Specificity Tau T181ph
Application notes Recommended use
ELISA, WB, IHC
Recommended dilutions
Western blotting, 1/1000 to 1/5000
Immunohistochemistry, 1/100 to 1/500
Other applications have not been tested.
Optimal dilutions/concentrations should be determined by the end user.

Source Culture Supernatant
Purification Ion-exchange chromatography
Form Liquid
Presentation Purified monoclonal antibody in PBS,
50% Glycerol, 0.05%w/v ProClin300
Concentration 1 mg/mL
Volume 100 μL
Storage Store below -20°C
(below -70°C for prolonged storage)
Aliquot to avoid cycles of freeze/thaw.

References

Data

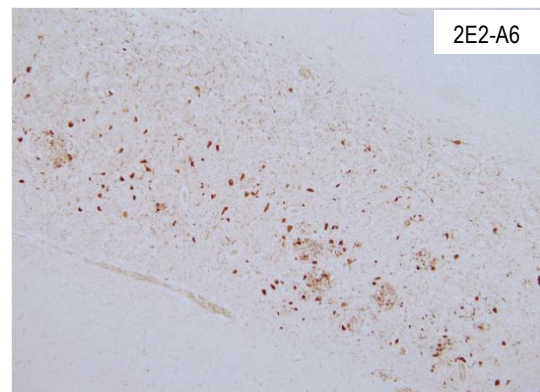


Fig.1 Immunohistochemistry/Immunofluorescence
- Tau T181ph antibody (2E2-A6)
AD autopsy brain paraffin sections

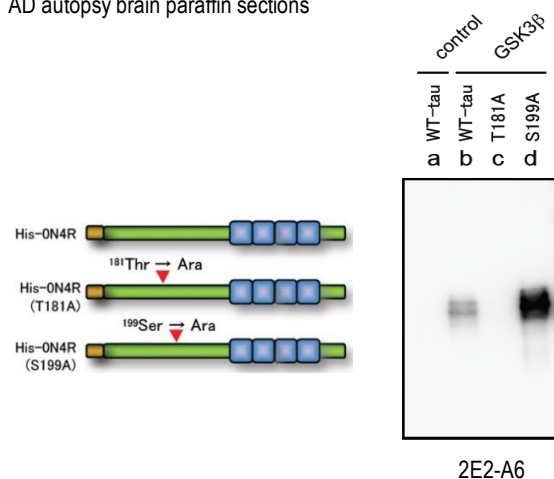


Fig.2 Western blot - Tau T181ph antibody (2E2-A6)
Recombinant protein
(Fig.1,2 : Dr. Tomohiro Miyasaka, Nihon University)