

Anti-Tau (RD3) antibody

| Clone | Cross reactivity | Application notes | Host | Isotype | Storage |
|---------|------------------|-------------------|------|------------------|---------|
| 2A1-1F4 | Hu | ELISA, WB, IHC | Rat | IgG2b, λ | -20°C |

BACKGROUND : Tau are proteins that stabilize microtubules and have several splicing variants in neurons. It is well known that pathologies of the nervous system such as Alzheimer's disease are associated with tau proteins.

Immunogen Synthetic peptide corresponding to the 16 amino acid of human Microtubule-associated protein tau.
Host Rat
Isotype IgG2b, λ
Cross reactivity Human
 Other species have not been tested.
Specificity Tau (3-repeat isoform RD3) (2N3R, 1N3R, 0N3R)
Application notes Recommended use
 ELISA, WB, IHC
 Recommended dilutions
 Western blotting, 1/1000 to 1/5000
 Immunohistochemistry, 1/100 to 1/500
 Other applications have not been tested.
 Optimal dilutions/concentrations should be determined by the end user.

Data

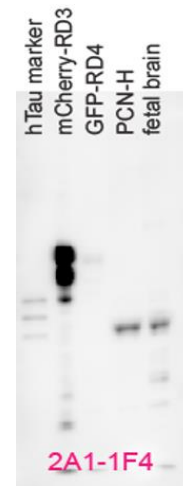


Fig.1 Western blot - Tau (RD3) antibody (2A1-1F4)
 Recombinant protein, PCN-H, Fetal brain extracts
 (Fig.1 : Dr. Shinsuke Ishigaki, Shiga University of Medical Science)

Source Culture Supernatant
Purification Ion-exchange chromatography
Form Liquid
Presentation Purified monoclonal antibody in PBS,
 50% Glycerol, 0.05% w/v ProClin300
Concentration 1 mg/mL
Volume 100 μ L
Storage Store below -20°C
 (below -70°C for prolonged storage)
 Aliquot to avoid cycles of freeze/thaw.

References

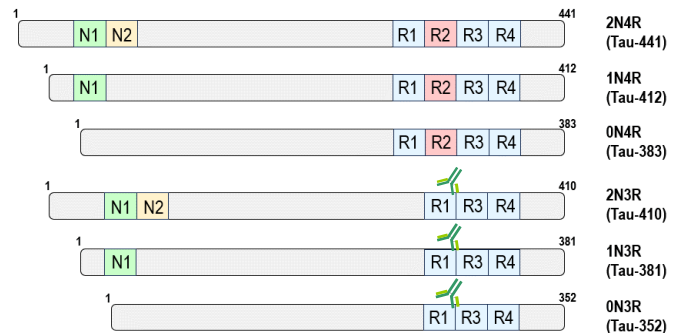


Fig.2 Human Tau isoforms