

# Anti-Tau (RD4) antibody

Clone	Cross reactivity	Application notes	Host	Isotype	Storage
3E8-1A6	Hu, Ms	ELISA, WB, IHC	mouse	IgG1, κ	-20°C

**BACKGROUND** : Tau are proteins that stabilize microtubules and have several splicing variants in neurons. It is well known that pathologies of the nervous system such as Alzheimer's disease are associated with tau proteins.

**Immunogen** Synthetic peptide corresponding to the 18 amino acid of human Microtubule-associated protein tau.  
**Host** mouse  
**Isotype** IgG1, κ  
**Cross reactivity** Human, Mouse  
 Other species have not been tested.  
**Specificity** Tau (4-repeat isoform RD4) (2N4R, 1N4R, 0N4R)  
**Application notes** Recommended use  
 ELISA, WB, IHC  
 Recommended dilutions  
 Western blotting, 1/1000 to 1/5000  
 Immunohistochemistry, 1/100 to 1/500  
 Other applications have not been tested.  
 Optimal dilutions/concentrations should be determined by the end user.

**Source** Culture Supernatant  
**Purification** Ion-exchange chromatography  
**Form** Liquid  
**Presentation** Purified monoclonal antibody in PBS, 50% Glycerol, 0.05%w/v ProClin300  
**Concentration** 1 mg/mL  
**Volume** 100 μL  
**Storage** Store below -20°C  
 (below -70°C for prolonged storage)  
 Aliquot to avoid cycles of freeze/thaw.

**References**

**Data**

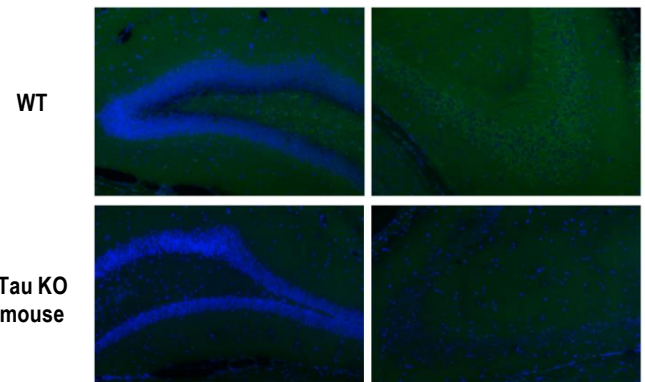


Fig.1 Immunohistochemistry/Immunofluorescence - Tau (RD4) antibody (3E8-1A6) Paraffin Tissue Section / Mouse Hippocampus (Fig.1 : Dr. Shinsuke Ishigaki, Shiga University of Medical Science)

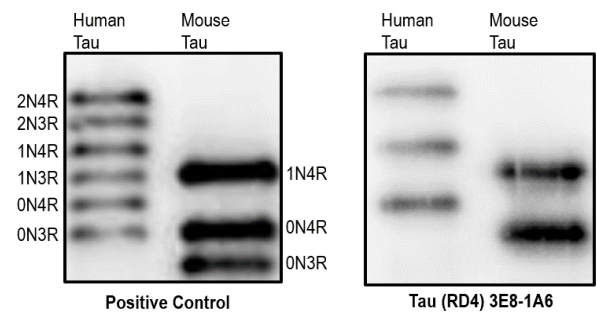


Fig.2 Western blot - Tau (RD4) antibody (3E8-1A6) Recombinant protein (Fig.2 : Dr. Shinichi Hisanaga, Tokyo Metropolitan University)

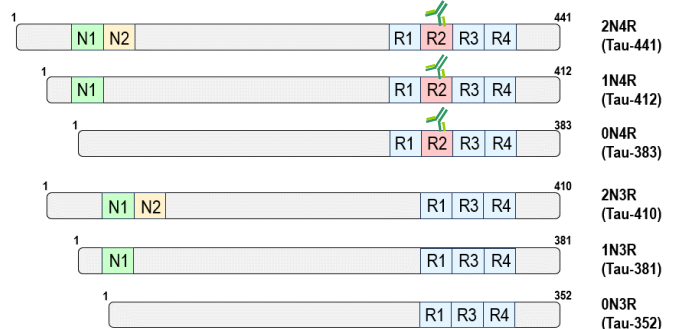


Fig.3 Human Tau isoforms