

# Anti-alpha-Tubulin antibody

Clone	Cross reactivity	Application notes	Host	Isotype	Storage
7C8B6	Hu, Ms, Rat, Rb, Mk	WB, ICC	Mouse	IgG2b, $\kappa$	-20°C

**BACKGROUND** : Microtubule filament, one of major cytoskeleton, plays important roles in diverse cellular function including cell division, cytoplasmic transport of membrane vesicles and neural cell migration. Alpha-Tubulin is a major component of microtubule filament and form heterodimers with beta-Tubulin in eukaryotic cells. Tubulins also have known to be targets for anticancer drugs like Taxol.

**Immunogen** Synthetic peptide corresponding to C-terminus region 25 aa (aa 426-450) of human alpha tubulin peptide, AALEKDYEIVGVDSVEGEGEEGEE

**Host** Mouse

**Isotype** IgG2b,  $\kappa$

**Cross reactivity** Human, Mouse, Rat, Rabbit, Monkey  
Other species have not been tested.

**Specificity** alpha-Tubulin

**Application notes** Recommended use  
WB, ICC Not tested for other applications.  
Recommended dilutions  
Western blotting, 1/1000 to 1/5000  
Immunocytochemistry, 1/100 to 1/500  
Optional dilutions/concentrations should be determined by the end user.

**Source** Culture Supernatant

**Purification** Ion-exchange chromatography

**Form** Liquid

**Presentation** Purified monoclonal antibody in PBS,  
50% Glycerol, 0.05%w/v ProClin300

**Concentration** 1 mg/mL

**Volume** 100  $\mu$ L

**Storage** Store below -20°C  
(below -70°C for prolonged storage)  
Aliquot to avoid cycles of freeze/thaw.

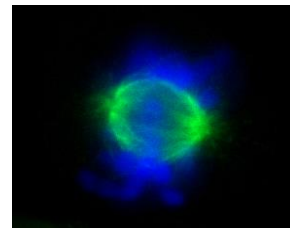
**References**

**Data**



NHDF cells

Fig.1 Immunocytochemistry/Immunofluorescence - alpha-L4Tubulin antibody (7C8B6) NHDF cells



NRK cells

Fig.2 Immunocytochemistry/Immunofluorescence - alpha-Tubulin antibody (7C8B6) NRK cells

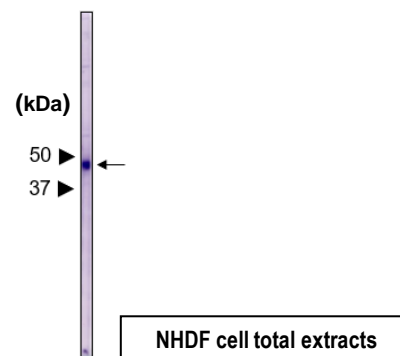


Fig.3 Western blot - alpha-Tubulin antibody (7C8B6) NHDF cell total extracts