

Anti-IGF-1R antibody

Clone	Cross reactivity	Application notes	Host	Isotype	Storage
1B1	Hu	ICC, FCM	Mouse	IgG2b, κ	-20°C

BACKGROUND : Type I insulin like growth factor receptor (IGF-1R) is a receptor tyrosine kinase that is involved in the transformation of cells, cancer proliferation and metastatic events in various types of cancer. IGF-1R is regarded as an attractive target molecule for cancer treatment, and several IGF-1R inhibitors have been developed and examined in clinical trials.

Immunogen Recombinant Human IGF-1R (full length)

Host Mouse
Isotype IgG2b, κ
Cross reactivity Human
Other species have not been tested.
Specificity IGF-1R
Application notes Recommended use
ICC, FCM Not tested for other applications.
Recommended dilutions
Immunocytochemistry, 1/100 to 1/500
Optional dilutions/concentrations should be determined
by the end user.

Source Culture Supernatant
Purification Ion-exchange chromatography
Form Liquid
Presentation Purified monoclonal antibody in PBS,
50% Glycerol, 0.05%w/v ProClin300
Concentration 1 mg/mL
Volume 100 μ L
Storage Store below -20°C
(below -70°C for prolonged storage)
Aliquot to avoid cycles of freeze/thaw.

References 1) Nakadate et al., Monoclon Antib Immunodiagn Immunother.
2014;33(2):126-128
This antibody is used in ref.1.

Data

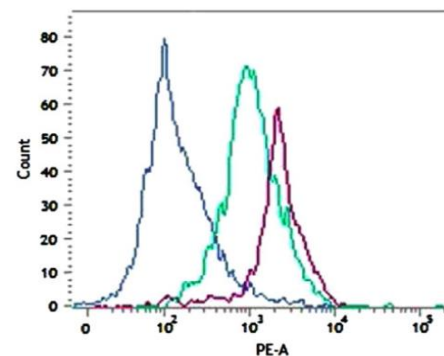


Fig.1 FCM analysis of the expression of IGF-1R. MCF-7 cells were labeled with MAb 1B1 (red line), positive control anti-IGF-1R Ab (green line), or isotype control MAB (blue line), and were then stained with PE-conjugated secondary antibody.

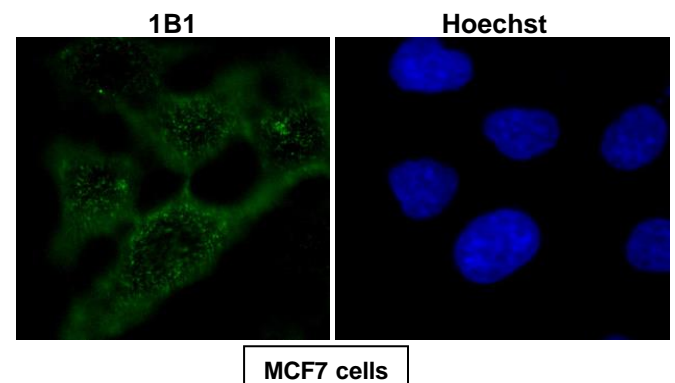


Fig.2 Immunocytochemistry/Immunofluorescence - IGF-1R antibody (1B1)
MCF-7 cells
* MCF-7 cells were incubated with MAb 1B1 prior to fixation.